

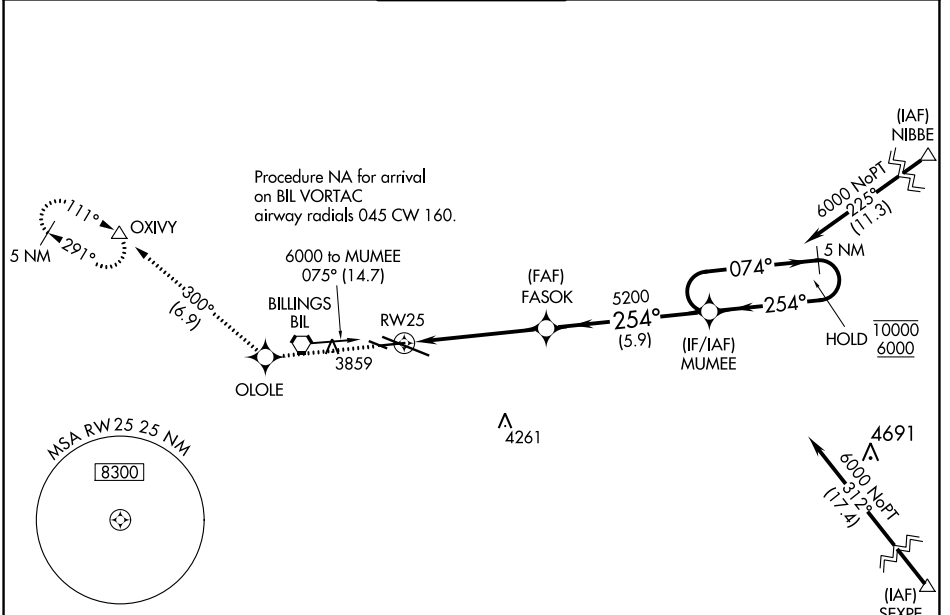
WAAS CH 78028 W25A	APP CRS 254°	Rwy Idg TDZE Apt Elev	5501 3586 3662
--	------------------------	-----------------------------	---

RNAV (GPS) RWY 25

BILLINGS LOGAN INTL (BIL)

RNP APCH - GPS.		MISSED APPROACH: Climb to 6000 direct OLOLE and on track 300° to OXIVY and hold.		
<p>▼ ▲ For uncompensated Baro-VNAV systems, LNAV/VNAV NA below -25°C or above 54°C.</p>				

ATIS 126.3	BILLINGS APP CON 120.5 284.6	BILLINGS TOWER 127.2 257.8	GND CON 121.9	CLNC DEL 121.9
----------------------	--	--------------------------------------	-------------------------	--------------------------



NW-1, 04 NOV 2021 to 02 DEC 2021

NW-1, 04 NOV 2021 to 02 DEC 2021

ELEV 3662	D	TDZE 3586
-----------	----------	-----------

Rwy 10R-10L: 3800 X 75
Rwy 7-25: 5501 X 75

254° to RW25

0.8% DOWN
1.3% DOWN
1.9% UP
1.0% UP

3764
3707

REIL Rwy 25 and 28R
HIRL Rwy 10L-28R
MIRL Rwy 7-25 and 10R-28L

6000	OLELE	tr 300°	OXIVY	MUMEE	5 NM Holding Pattern
				10000 6000	GP 3.00° TCH 36
	1.2	3.9 NM	5.9 NM		
CATEGORY	A	B	C	D	
LPV DA		3836-1	250 (200-1)		
LNAV/VNAV DA		3920-1 $\frac{3}{8}$	334 (300-1 $\frac{3}{8}$)		
LNAV MDA		3960-1	374 (300-1)		
C CIRCLING	4100-1 438 (500-1)	4160-1 498 (500-1)	4180-1 $\frac{1}{2}$ 518 (600-1 $\frac{1}{2}$)	4580-3 918 (1000-3)	