

BANGOR, MAINE

HI-VOR/DME or TACAN RWY 15

VORTAC BGR 114.8 Chan 95	APCH CRS 157°	Rwy ldg TDZE 11,440 192 Arprt Elev 192
--------------------------------	------------------	--

JAL-39 [USAF]

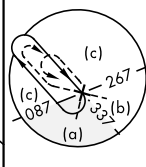
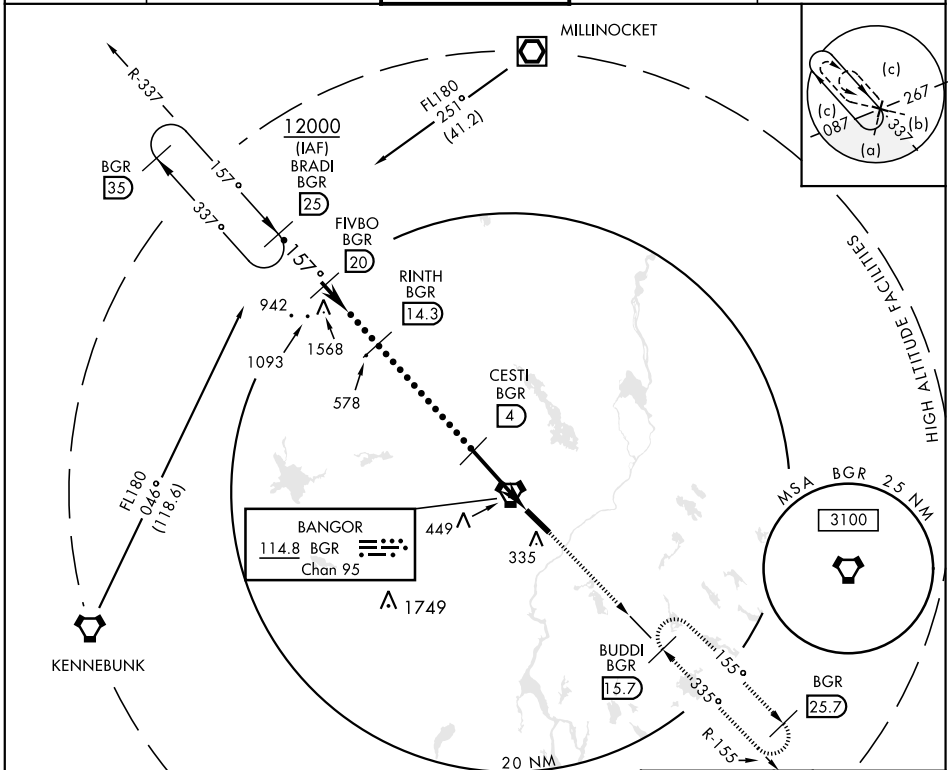
BANGOR INTL (KBGR)

▼ * When ALS inop, increase CAT E vis to 1¾ miles.
 ** Circling not authorized NE of Rwy 15-33.



MISSED APPROACH: Climb to 3000 via BGR VORTAC R-155 to BUDDI (R-155/15.7 DME) and hold.

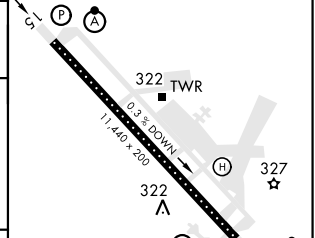
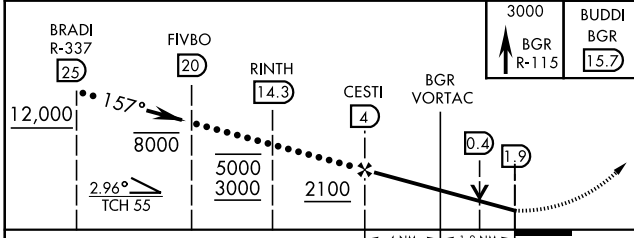
ATIS 127.75	BANGOR APP CON 118.925 239.3	BANGOR TOWER 120.7 233.7	GND CON 121.9 348.6	ASR
----------------	---------------------------------	-----------------------------	------------------------	-----



NE-1, 24 MAY 2018 to 21 JUN 2018

NE-1, 24 MAY 2018 to 21 JUN 2018

EMERG SAFE ALT 100 NM 7500	ELEV 192	TDZE 192
----------------------------	----------	----------



CATEGORY	C	D	E
S-15*	720/50 528 (600-1)	720/60	528 (600-1½)
CIRCLING**	720-1½ 528 (600-1½)	760-2	568 (600-2)

TDZL/CL Rwy 15 HIRL Rwy 15-33					
FAF to MAP 5.9 NM					
Knots	120	140	160	180	200
Min:Sec	2:57	2:32	2:13	1:58	1:46

BANGOR, MAINE
Amdt 3 14261

44°48'N-68°50'W

BANGOR INTL (KBGR)

HI-VOR/DME or TACAN RWY 15