

LOC I-BGM <b>110.3</b>	APP CRS <b>340°</b>	Rwy Idg <b>7099</b> THRE <b>1570</b> Apt Elev <b>1636</b>
---------------------------	------------------------	--

# ILS or LOC RWY 34

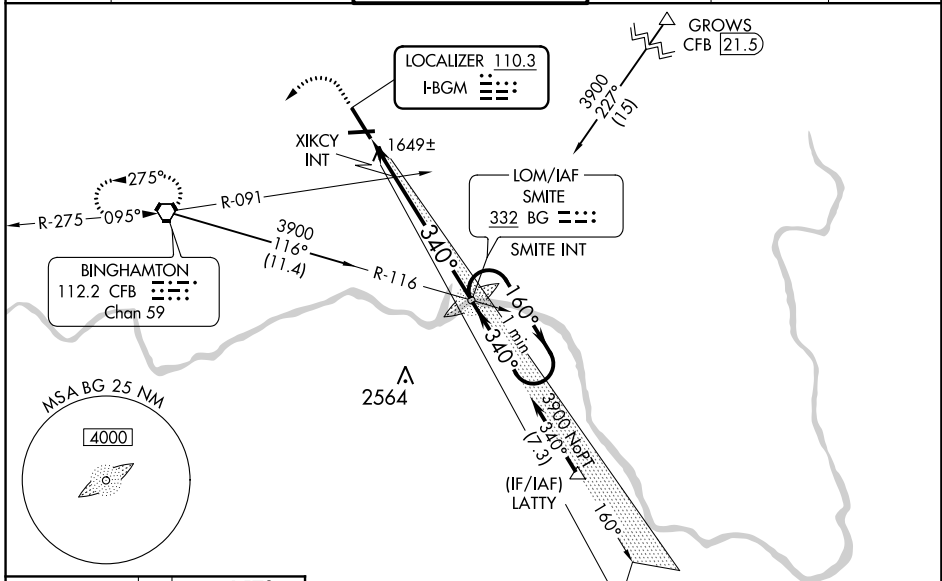
GREATER BINGHAMTON/EDWIN A. LINK FIELD (BGM)

**⚠** When local altimeter setting not received, use Ithaca altimeter setting; increase S-ILS 34 DA to 1908 and all Cats visibility 1/8 mile; increase all MDA 140 feet and S-LOC 34 Cats C/D visibility 3/8 mile and Circling Cats C/D visibility 1/4 mile; increase XIKCY fix minimums S-LOC 34 Cats C/D visibility 1/4 mile. For inoperative MALSR increase S-LOC 34 Cats C/D visibility to 1 3/8 mile and XIKCY fix minimums S-LOC 34 Cats C/D visibility to RVR 5000. For inoperative MALSR when using Ithaca altimeter setting, increase S-ILS 34 all Cats visibility to RVR 6000, S-LOC 34 Cats C/D visibility to 1 3/4, and XIKCY fix minimums S-LOC 34 Cats C/D visibility to 1 3/8 mile.



**MISSED APPROACH:**  
Climb to 2200 then climbing left turn to 3900 direct CFB VORTAC and hold, continue climb-in-hold to 3900.

ATIS <b>128.15</b>	BINGHAMTON APP CON * <b>118.6 257.625</b>	BINGHAMTON TOWER * <b>119.3 (CTAF) 0 239.25</b>	GND CON <b>121.9</b>	CLNC DEL <b>125.05</b>	UNICOM <b>122.95</b>
-----------------------	--	--	-------------------------	---------------------------	-------------------------



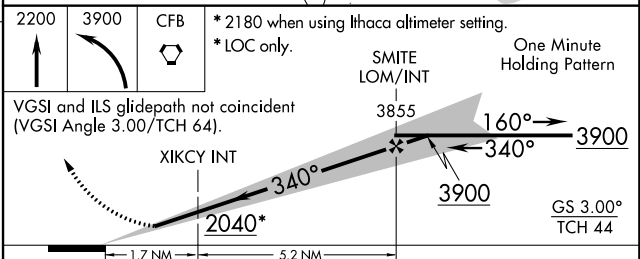
NE-2. 01 MAR 2018 to 29 MAR 2018

NE-2. 01 MAR 2018 to 29 MAR 2018

ELEV 1636 **D** THRE 1570

REIL Rwy 28  
MIRL Rwy 10-28 340° 6.9 NM from FAF  
HIRL Rwy 16-34 340° 6.9 NM from FAF

Knots	60	90	120	150	180
Min:Sec	6:54	4:36	3:27	2:46	2:18



CATEGORY	A	B	C	D
S-ILS 34	1770/24 200 (200-1/2)			
S-LOC 34	2040/24	470 (500-1/2)	2040/50	470 (500-1)
<b>C</b> CIRCLING	2120-1	484 (500-1)	2120-1 1/2 484 (500-1 1/2)	2200-2 564 (600-2)
XIKCY FIX MINIMUMS				
S-LOC 34	1940/24	370 (400-1/2)	1940/35	370 (400-3/4)
<b>C</b> CIRCLING	2120-1	484 (500-1)	2120-1 1/2 484 (500-1 1/2)	2200-2 564 (600-2)