



LOC/DME I-RMT <b>110.35</b> Chan 40 (Y)	APP CRS <b>126°</b>	Rwy Idg TDZE Apt Elev <b>8279</b> <b>3963</b> <b>3967</b>
---	------------------------	--

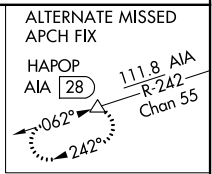
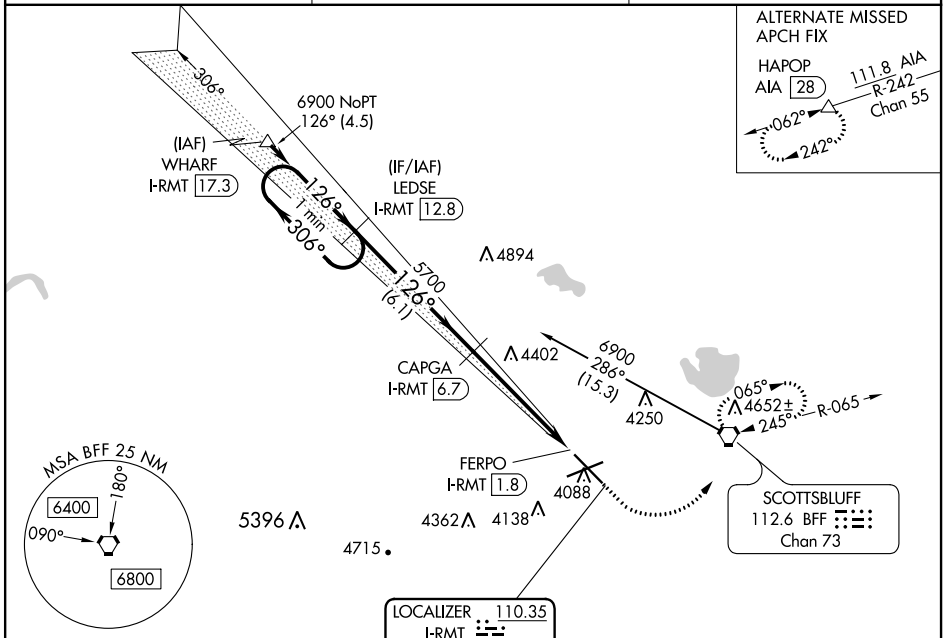
# ILS or LOC/DME RWY 12

WESTERN NEBRASKA RGNL/WILLIAM B HEILIG FIELD (BFF)

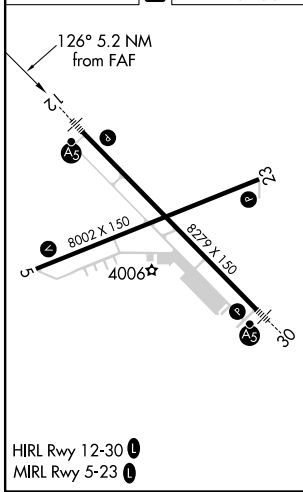
**⚠** When local altimeter setting not received, use Alliance altimeter setting and increase DA 91 feet; all MDAs 100 feet, and S-LOC 12 and Circling Cat B/C/D visibilities 1/4 mile. For inoperative MALS, when using Alliance altimeter setting, increase S-ILS 12 visibility to 1. VDP NA when using Alliance altimeter setting.

**MALS**  **MISSED APPROACH:** Climb to 4500 then climbing left turn to 6900 direct BFF VORTAC and hold, continue climb-in-hold to 6900.

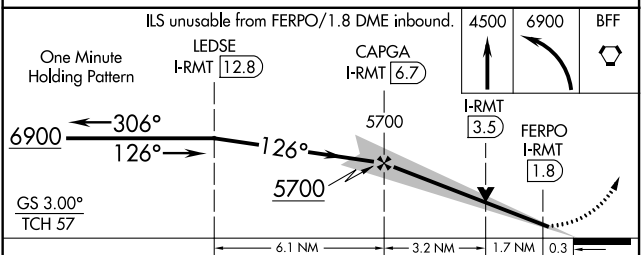
ASOS <b>121.025</b>	DENVER CENTER <b>127.95 338.2</b>	UNICOM <b>123.0 (CTAF)</b> 
------------------------	--------------------------------------	---




ELEV 3967 	TDZE 3963
--	-----------



**DME REQUIRED**



CATEGORY	A	B	C	D
S-ILS 12	4163-1/2 200 (200-1/2)			
S-LOC 12	4640-1/2 677 (700-1/2)	4640-1 677 (700-1/2)	4640-1 677 (700-1/2)	4640-1 677 (700-1/2)
 CIRCLING	4640-1 673 (700-1)	4640-2 673 (700-2)	4640-2 673 (700-2)	4740-2 773 (800-2 1/2)

NC-2, 16 JUL 2020 to 13 AUG 2020

NC-2, 16 JUL 2020 to 13 AUG 2020