


WAAS CH 87000 W11A	APP CRS 113°	Rwy Idg TDZE 132 Apt Elev 132	7011
--	------------------------	---	-------------

RNAV (GPS) Z RWY 11

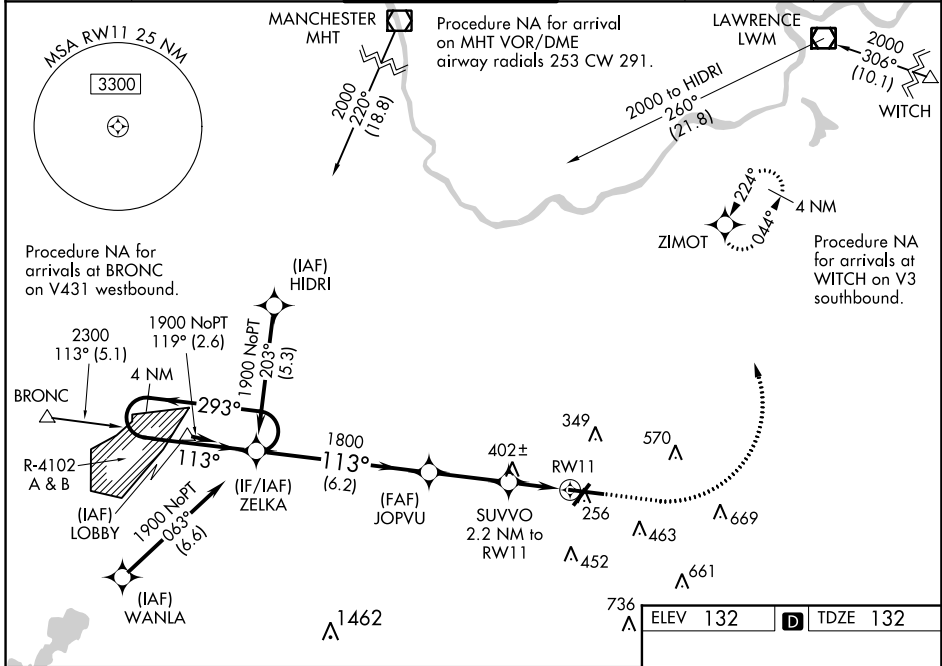
LAURENCE G HANSCOM FIELD (BED)

⚠ For uncompensated Baro-VNAV systems, LNAV/VNAV NA below -16°C (4°F) or above 54°C (130°F). DME/DME RNP-0.3 NA. When local altimeter setting not received, use Boston altimeter setting and increase all DA 49 feet and all MDA 60 feet; increase LNAV/VNAV all Cats visibility to RVR 4500, increase LNAV and Circling Cats C and D visibility 1/4 mile. Baro-VNAV and VDP NA with Boston altimeter setting. Inop table does not apply to LPV all Cats.

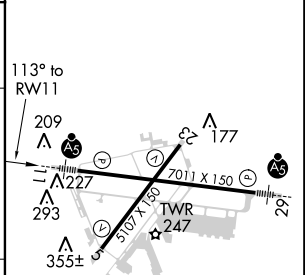
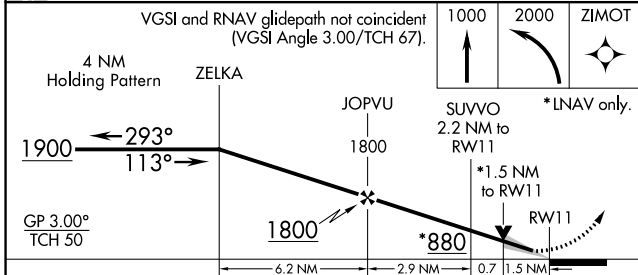
MALSR 

MISSED APPROACH: Climb to 1000 then climbing left turn to 2000 direct ZIMOT and hold.

ATIS 124.6	BOSTON APP CON 124.4 279.6	HANSCOM TOWER* 118.5 (CTAF) 257.2	GND CON 121.7	CLNC DEL 121.85	UNICOM 122.95
----------------------	--------------------------------------	--	-------------------------	---------------------------	-------------------------



ELEV 132	TDZE 132
----------	----------



CATEGORY	A	B	C	D
LPV DA		382/40	250 (300-3/4)	
LNAV/VNAV DA		474/40	342 (400-3/4)	
LNAV MDA	660/24	528 (600-1/2)	660/55	528 (600-1/4)
CIRCLING	720-1	588 (600-1)	720-1 1/2	780-2
			588 (600-1/2)	648 (700-2)

MIRL Rwy 5-23 **Ⓛ**

HIRL Rwy 11-29 **Ⓛ**

REIL Rwy 5 and 23

NE-1, 29 MAR 2018 to 26 APR 2018

NE-1, 29 MAR 2018 to 26 APR 2018