

LOC/DME I-ULJ <b>111.15</b> Chan 48(Y)	APP CRS <b>293°</b>	Rwy Idg <b>7011</b> TDZE <b>128</b> Apt Elev <b>132</b>
--	------------------------	---

# ILS or LOC RWY 29

LAURENCE G HANSCOM FIELD (BED)

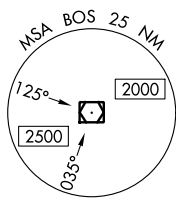
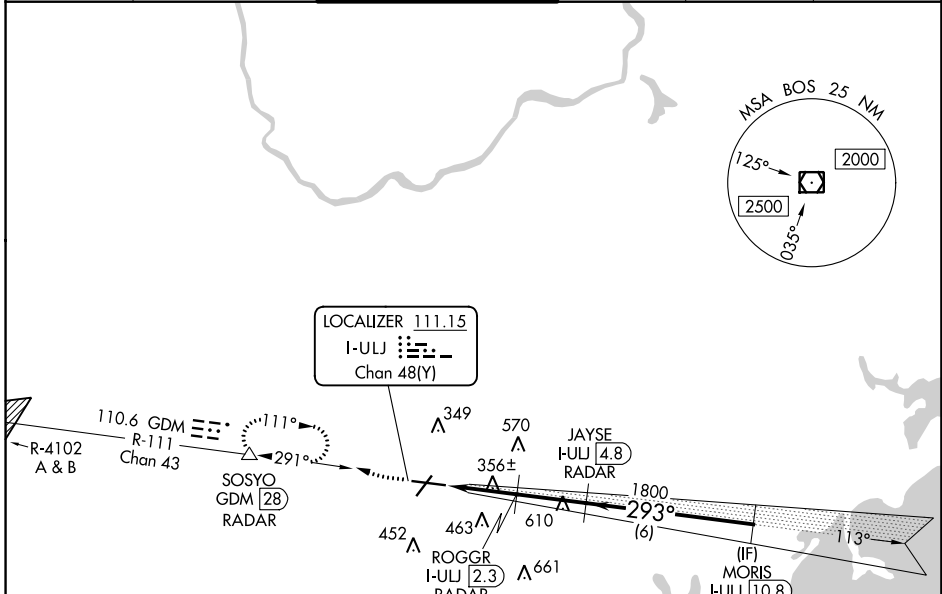
RADAR required for procedure entry.  
DME or RADAR required.

**▲** For inop ALS, increase S-LOC 29 Cats C and D to 1½ SM.

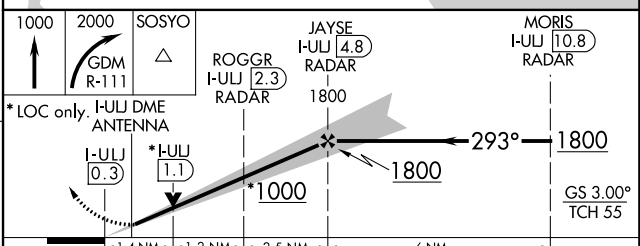
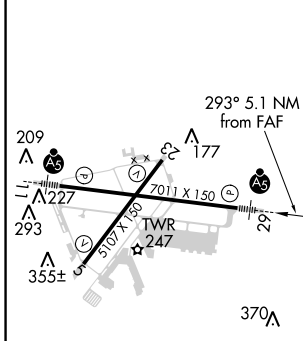
**MALSR**

**MISSED APPROACH:** Climb to 1000 then climbing right turn to 2000 on GDM VOR/DME R-111 to SOSYO/GDM 28 DME/RADAR and hold.

ATIS <b>124.6</b>	BOSTON APP CON <b>124.4 279.6</b>	<b>HANSCOM TOWER ★</b> <b>118.5 (CTAF) 0 257.2</b>	GND CON <b>121.7</b>	CLNC DEL <b>121.85</b>	UNICOM <b>122.95</b>
----------------------	--------------------------------------	---	-------------------------	---------------------------	-------------------------



ELEV 132	<b>D</b>	TDZE 128
----------	----------	----------



CATEGORY	A	B	C	D
S-ILS 29	328-½		200 (200-½)	
S-LOC 29	620-½	492 (500-½)	620-1	492 (500-1)
<b>C</b> CIRCLING	720-1	588 (600-1)	880-2¼ 748 (800-2¼)	920-2½ 788 (800-2½)

NE-1, 10 OCT 2019 to 07 NOV 2019

NE-1, 10 OCT 2019 to 07 NOV 2019