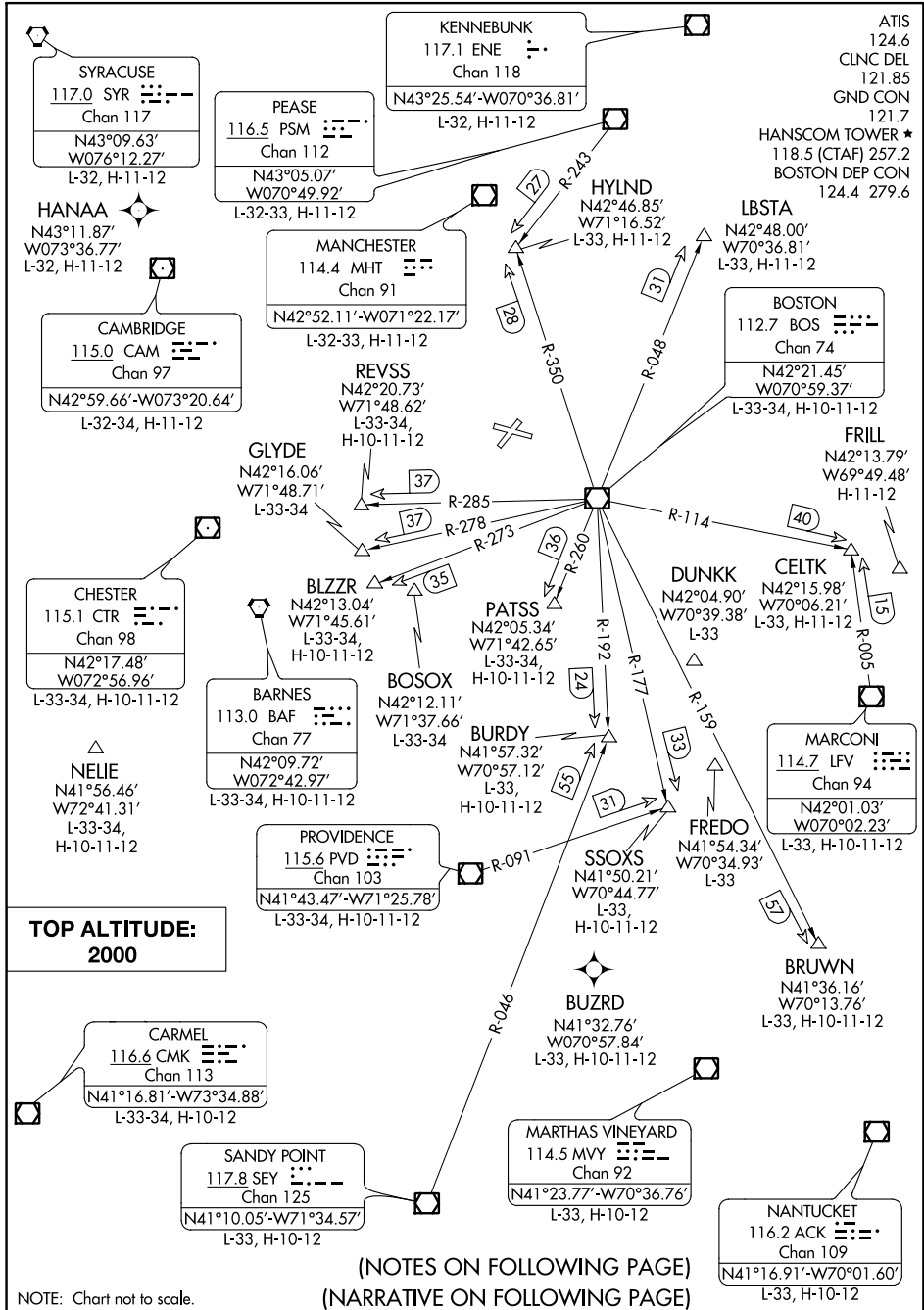


# HANSCOM TWO DEPARTURE



NE-1, 10 OCT 2019 to 07 NOV 2019

NE-1, 10 OCT 2019 to 07 NOV 2019

ATIS 124.6  
CLNC DEL 121.85  
GND CON 121.7  
HANSCOM TOWER ★ 118.5 (CTAF) 257.2  
BOSTON DEP CON 124.4 279.6

**BOSTON**  
112.7 BOS  
Chan 74  
N42°21.45'  
W070°59.37'  
L-33-34, H-10-11-12

**CELTK**  
N42°15.98'  
W70°06.21'  
L-33, H-10-11-12

**MARCONI**  
114.7 LFV  
Chan 94  
N42°01.03'  
W070°02.23'  
L-33, H-10-11-12

**BRUWN**  
N41°36.16'  
W70°13.76'  
L-33, H-10-11-12

**NANTUCKET**  
116.2 ACK  
Chan 109  
N41°16.91'-W70°01.60'  
L-33, H-10-12

**KENNEBUNK**  
117.1 ENE  
Chan 118  
N43°25.54'-W070°36.81'  
L-32, H-11-12

**PEASE**  
116.5 PSM  
Chan 112  
N43°05.07'  
W070°49.92'  
L-32-33, H-11-12

**MANCHESTER**  
114.4 MHT  
Chan 91  
N42°52.11'-W071°22.17'  
L-32-33, H-11-12

**REVSS**  
N42°20.73'  
W71°48.62'  
L-33-34,  
H-10-11-12

**SYRACUSE**  
117.0 SYR  
Chan 117  
N43°09.63'  
W076°12.27'  
L-32, H-11-12

**HANAA**  
N43°11.87'  
W073°36.77'  
L-32, H-11-12

**CAMBRIDGE**  
115.0 CAM  
Chan 97  
N42°59.66'-W073°20.64'  
L-32-34, H-11-12

**CHESTER**  
115.1 CTR  
Chan 98  
N42°17.48'  
W072°56.96'  
L-33-34, H-10-11-12

**BLZRR**  
N42°13.04'  
W71°45.61'  
L-33-34,  
H-10-11-12

**BARNES**  
113.0 BAF  
Chan 77  
N42°09.72'  
W072°42.97'  
L-33-34, H-10-11-12

**PATSS**  
N42°05.34'  
W71°42.65'  
L-33-34,  
H-10-11-12

**BURDY**  
N41°57.32'  
W70°57.12'  
L-33,  
H-10-11-12

**PROVIDENCE**  
115.6 PVD  
Chan 103  
N41°43.47'-W71°25.78'  
L-33-34, H-10-11-12

**NELIE**  
N41°56.46'  
W72°41.31'  
L-33-34,  
H-10-11-12

**SSOXS**  
N41°50.21'  
W70°44.77'  
L-33,  
H-10-11-12

**FREDO**  
N41°54.34'  
W70°34.93'  
L-33

**BUZRD**  
N41°32.76'  
W070°57.84'  
L-33, H-10-11-12

**MARTHAS VINEYARD**  
114.5 MZY  
Chan 92  
N41°23.77'-W70°36.76'  
L-33, H-10-12

**SANDY POINT**  
117.8 SEY  
Chan 125  
N41°10.05'-W71°34.57'  
L-33, H-10-12

**CARMEL**  
116.6 CMK  
Chan 113  
N41°16.81'-W73°34.88'  
L-33-34, H-10-12

# HANSCOM TWO DEPARTURE



## DEPARTURE ROUTE DESCRIPTION

TAKEOFF ALL RUNWAYS: Climb heading as assigned by ATC, thence....

....expect RADAR vectors to assigned route/navaid/fix. Maintain 2000. Expect clearance to filed altitude/flight level within ten (10) minutes after departure.

NOTE: RADAR required.

NOTE: Non-RNAV equipped aircraft can expect vectors on assigned route.

NOTE: BLZZR DEPARTURES expect vectors on BOS R-273, DME required.

NOTE: BRUWN DEPARTURES expect vectors on BOS R-159, DME required.

NOTE: CELTK DEPARTURES expect vectors on BOS R-114.

NOTE: HYLND DEPARTURES expect vectors on BOS R-350.

NOTE: PATSS DEPARTURES expect vectors on BOS R-260, DME required.

NOTE: REVSS DEPARTURES expect vectors on BOS R-285, DME required.

NOTE: SSOXS DEPARTURES expect vectors on BOS R-177.

### TAKEOFF MINIMUMS:

Rwys 5, 29: Standard

Rwy 11: 300-1¼ or Standard with minimum climb of 251' per NM to 400, or alternatively, with standard takeoff minimums and a normal 200' per NM climb gradient, takeoff must occur not later than 2100' prior to DER.

Rwy 23: 300-2 or Standard with minimum climb of 426' per NM to 500.

NE-1, 10 OCT 2019 to 07 NOV 2019

NE-1, 10 OCT 2019 to 07 NOV 2019