

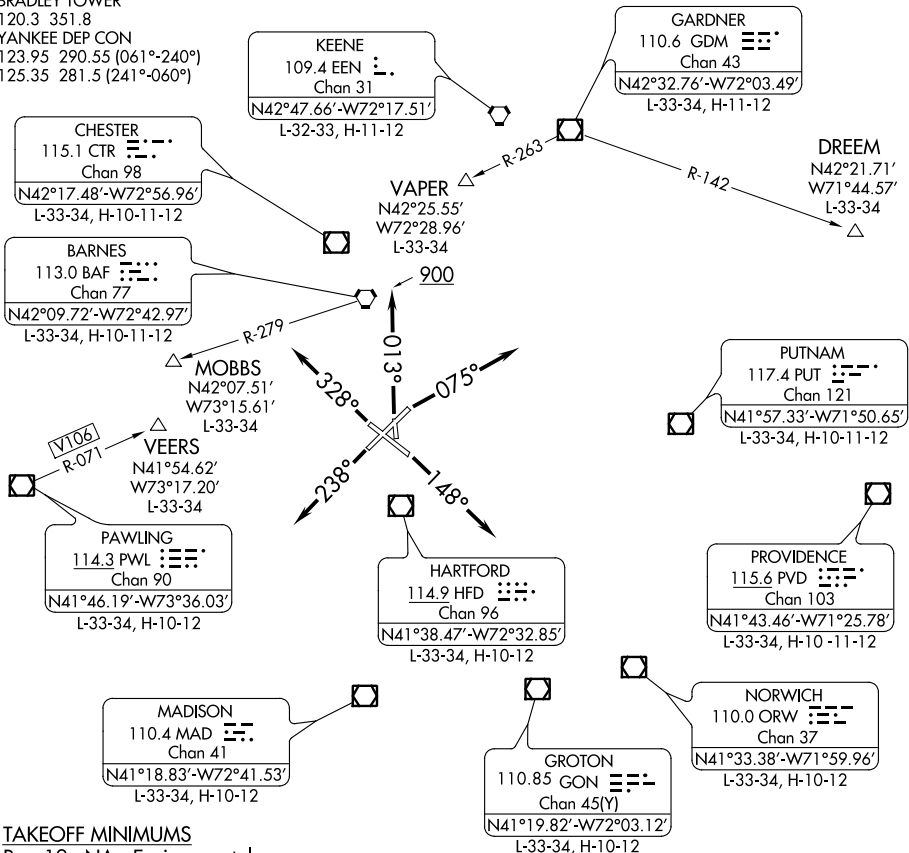
BRADLEY FOUR DEPARTURE

BRADLEY INTL (BDL)
WINDSOR LOCKS, CONNECTICUT

D-ATIS 118.15
CLNC DEL
121.75 322.3
GND CON
121.9 348.6
CPDLC
BRADLEY TOWER
120.3 351.8
YANKEE DEP CON
123.95 290.55 (061°-240°)
125.35 281.5 (241°-060°)

NOTE: RADAR required.
NOTE: Initial departure headings are predicated on avoiding noise sensitive areas, flight crew awareness and compliance is important in minimizing noise impacts on surrounding communities.
NOTE: Appropriate departure frequency to be assigned by ATC.

**TOP ALTITUDE:
4000**



NE-1, 07 NOV 2019 to 05 DEC 2019

NE-1, 07 NOV 2019 to 05 DEC 2019

TAKEOFF MINIMUMS

Rwy 19: NA - Environmental
Rwys 1, 6, 15, 24: Standard.
Rwy 33: Standard with minimum climb of 340' per NM to 1000.

NOTE: Chart not to scale.

DEPARTURE ROUTE DESCRIPTION

- TAKEOFF RUNWAY 1:** Climb heading 013° to 900, then as assigned, thence....
- TAKEOFF RUNWAY 6:** Climb heading 075° or as assigned, thence....
- TAKEOFF RUNWAY 15:** Climb heading 148° or as assigned, thence....
- TAKEOFF RUNWAY 24:** Climb heading 238° or as assigned, thence....
- TAKEOFF RUNWAY 33:** Climb heading 328° or as assigned, thence....

....on RADAR vectors to filed/assigned route or depicted fix. Maintain 4000 or assigned altitude, expect clearance to requested altitude/flight level 10 minutes after departure.

BRADLEY FOUR DEPARTURE

WINDSOR LOCKS, CONNECTICUT
BRADLEY INTL (BDL)