

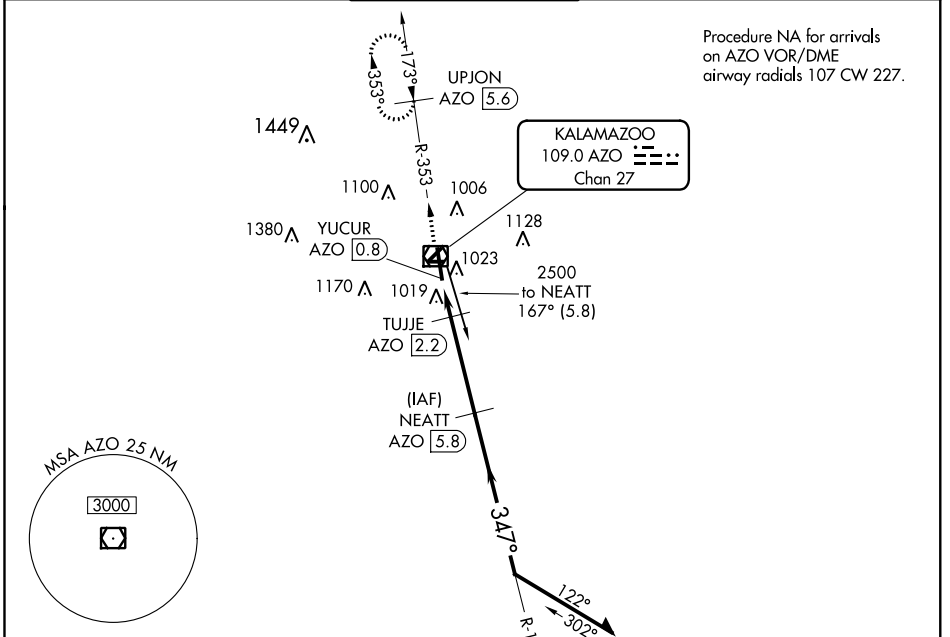
VOR/DME AZO	APP CRS	Rwy Idg	6502
109.0	347°	TDZE	868
Chan 27		Apt Elev	874

VOR RWY 35

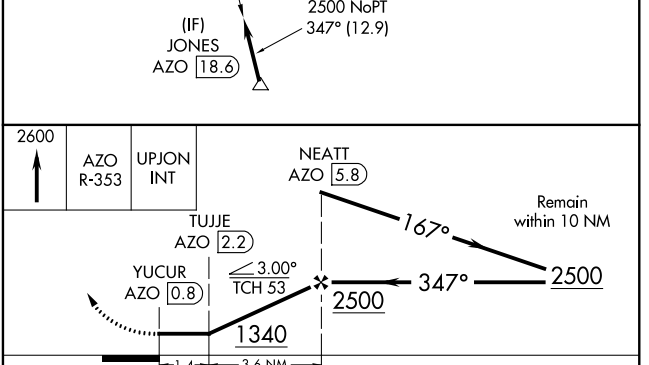
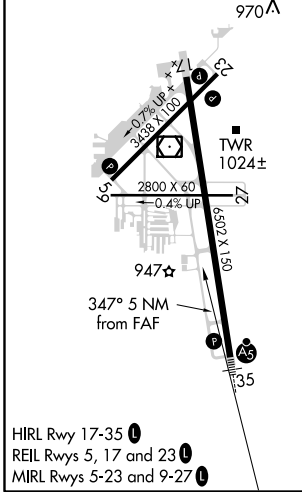
KALAMAZOO/BATTLE CREEK INTL (AZO)

ASR	Circling to Rwy 5, 9, 23, 27 NA at night. DME required. For inoperative MALSR, increase S-35 Cat C and D visibility to RVR 6000.	MALSR	MISSED APPROACH: Climb to 2600 on AZO VOR/DME R-353 to UPJON/AZO 5.6 DME and hold.
-----	----------------------------------------------------------------------------------------------------------------------------------	-------	------------------------------------------------------------------------------------

ATIS	KALAMAZOO APP CON *	KALAMAZOO TOWER *	GND CON	CLNC DEL	UNICOM
127.25	121.2 239.25	118.3 (CTAF) 257.875	121.9	121.75	122.95



ELEV 874	D	TDZE 868
----------	---	----------



CATEGORY	A	B	C	D
S-35	1280/24	412 (500-1/2)	1280/40	412 (500-3/4)
CIRCLING	1380-1	506 (600-1)	1480-1 3/4 606 (700-1 3/4)	1480-2 606 (700-2)

EC-1, 28 MAR 2019 to 25 APR 2019

EC-1, 28 MAR 2019 to 25 APR 2019