

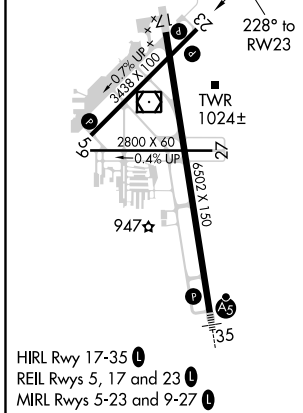
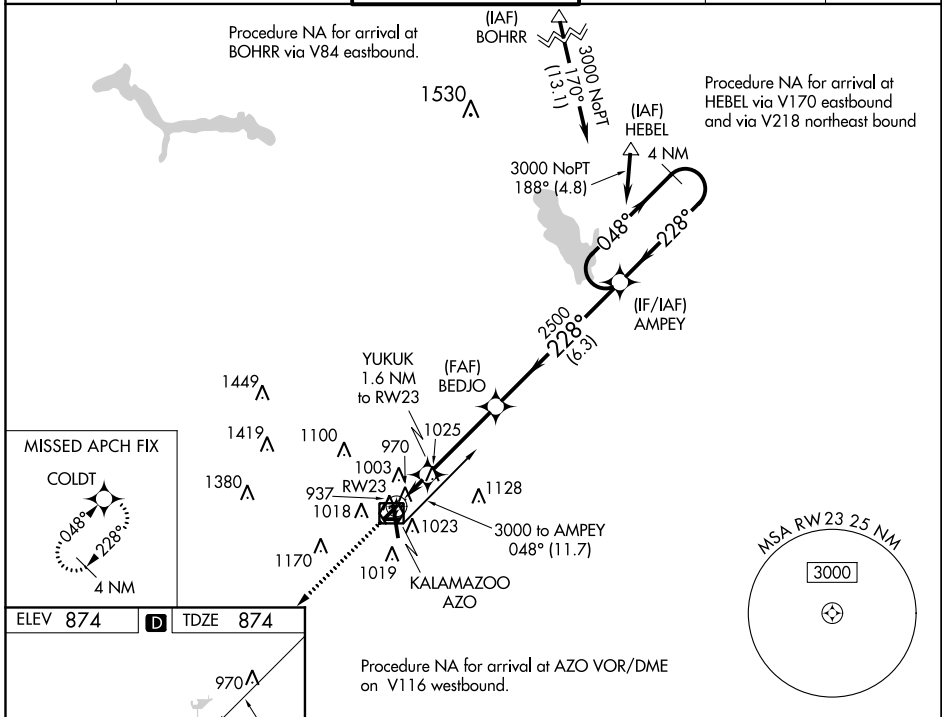
WAAS CH <b>61021</b> <b>W23A</b>	APP CRS <b>228°</b>	Rwy Idg TDZE Apt Elev	<b>3439</b> <b>874</b> <b>874</b>
--	------------------------	-----------------------------	---

# RNAV (GPS) RWY 23

KALAMAZOO/BATTLE CREEK INTL (AZO)

<p><b>ASR</b></p>	<p>DME/DME RNP-0.3 NA. Helicopter visibility reduction below 1 SM NA. When local altimeter setting not received, use Battle Creek altimeter setting and increase all MDA 60 feet, LP Cat C visibility to 1¼ and LNAV Cat C visibility to 1¾. Night landing: Rwy's 5, 9, 23, 27 NA.</p>	<p>MISSED APPROACH: Climb to 2700 direct COLDT and hold.</p>
-------------------	--	--

ATIS <b>127.25</b>	KALAMAZOO APP CON * <b>121.2 239.25</b>	KALAMAZOO TOWER * <b>118.3 (CTAF) 0 257.875</b>	GND CON <b>121.9</b>	CLNC DEL <b>121.75</b>	UNICOM <b>122.95</b>
-----------------------	--	--	-------------------------	---------------------------	-------------------------



2700	COLDT	VGSI and descent angles not coincident (VGSI Angle 3.50/TCH 38).			4 NM Holding Pattern	
YUKUK 1.6 NM to RW23	BEDJO	AMPEY	3000	048°	228°	
RW23	1380	2500	3000	1.6 NM	3.5 NM	6.3 NM
CATEGORY	A	B	C	D		
LP MDA	1220-1	346 (400-1)		NA		
LNAV MDA	1280-1	406 (500-1)	1280-1¼ 406 (500-1¼)	NA		
CIRCLING	1380-1	506 (600-1)	1380-1½ 506 (600-1½)	NA		