

WAAS CH <b>57933</b> <b>W17A</b>	APP CRS <b>174°</b>	Rwy Idg TDZE Apt Elev	<b>6502</b> <b>867</b> <b>874</b>
--	------------------------	-----------------------------	---

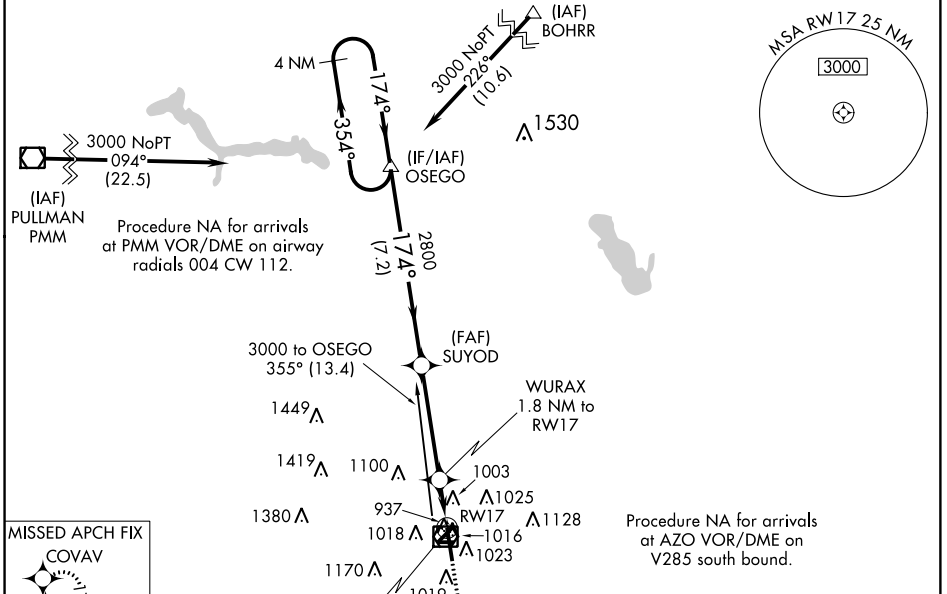
# RNAV (GPS) RWY 17

KALAMAZOO/BATTLE CREEK INTL (AZO)

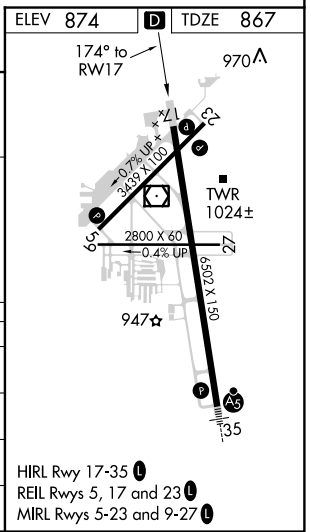
**ASR** Baro-VNAV NA when using Battle Creek altimeter setting. For uncompensated Baro-VNAV systems, LNAV/VNAV NA below -21°C (-5°F) or above 54°C (130°F). DME/DME RNP-0.3 NA. Helicopter visibility reduction below 3/4 SM not authorized. When local altimeter setting not received, use Battle Creek altimeter setting and increase all DA 44 feet and all MDA 60 feet. Increase LPV all Cats and LNAV Cat C/D visibility 1/8 mile. Increase LNAV/VNAV visibility all Cats 1/4 mile. Circling to Rwy 9/27 and 5/23 NA at night.

**MISSED APPROACH:** Climb to 2800 direct COVAV and hold.

ATIS <b>127.25</b>	KALAMAZOO APP CON ★ <b>121.2 239.25</b>	KALAMAZOO TOWER ★ <b>118.3</b> (CTAF) <b>0 257.875</b>	GND CON <b>121.9</b>	CLNC DEL <b>121.75</b>	UNICOM <b>122.95</b>
-----------------------	--	---	-------------------------	---------------------------	-------------------------



4 NM Holding Pattern		OSEGO		SUYOD		WURAX 1.8 NM to RWY 17		RWY 17	
3000 ← 354°		174° →		2800		*1460		*NAV only.	
GP 3.00° TCH 45		7.2 NM		4.2 NM		1.8		2800 COVAV	
CATEGORY	A	B	C	D					
LPV DA		1156-1	289 (300-1)						
LNAV/VNAV DA		1185-1	318 (400-1)						
LNAV MDA	1320-1	453 (500-1)	1320-1 3/8	453 (500-1 3/8)					
CIRCLING	1380-1	506 (600-1)	1480-1 3/4	606 (700-1 3/4)	1480-2	606 (700-2)			



HIRL Rwy 17-35 **1**  
REIL Rws 5, 17 and 23 **1**  
MIRL Rws 5-23 and 9-27 **1**

EC-1, 04 JAN 2018 to 01 FEB 2018

EC-1, 04 JAN 2018 to 01 FEB 2018