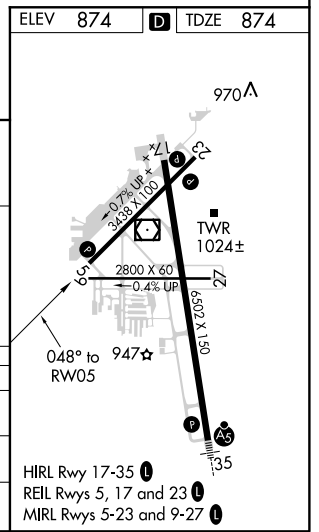
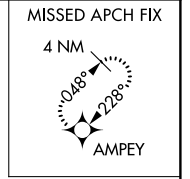
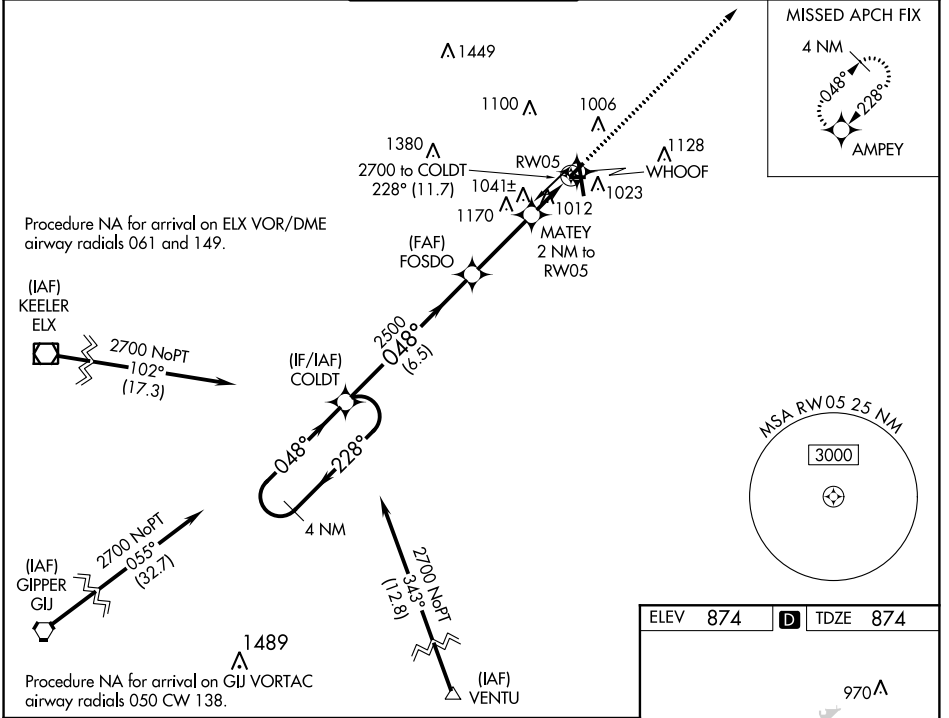


WAAS CH 56321 W05A	APP CRS 048°	Rwy Idg TDZE Apf Elev	3439 874 874
--	------------------------	-----------------------------	---

RNAV (GPS) RWY 5

KALAMAZOO/BATTLE CREEK INTL (AZO)

RNP APCH.		MISSED APPROACH: Climb to 3000 direct AMPEY and hold.		
<p>ASR Circling Rwy 5, 9, 17, 23, 27 NA at night. Straight-in Rwy 5 NA at night. Rwy 5 helicopter visibility below 1 SM NA.</p>				
ATIS 127.25	KALAMAZOO APP CON * 121.2 239.25	KALAMAZOO TOWER * 118.3 (CTAF) 0 257.875	GND CON 121.9	CLNC DEL 121.75
		UNICOM 122.95		



CATEGORY	4 NM Holding Pattern		3000	AMPEY
	A	B		
LP MDA	1280-1	406 (500-1)	1280-1 1/8 406 (500-1 1/8)	NA
LNAV MDA	1300-1	426 (500-1)	1300-1 1/4 426 (500-1 1/4)	NA
C CIRCLING	1380-1	506 (600-1)	1480-1 3/4 606 (700-1 3/4)	NA

EC-1, 13 SEP 2018 to 11 OCT 2018

EC-1, 13 SEP 2018 to 11 OCT 2018