

# WHINZ FOUR ARRIVAL

D-ATIS ARR  
119.65  
ATLANTA APP CON  
127.9 379.9

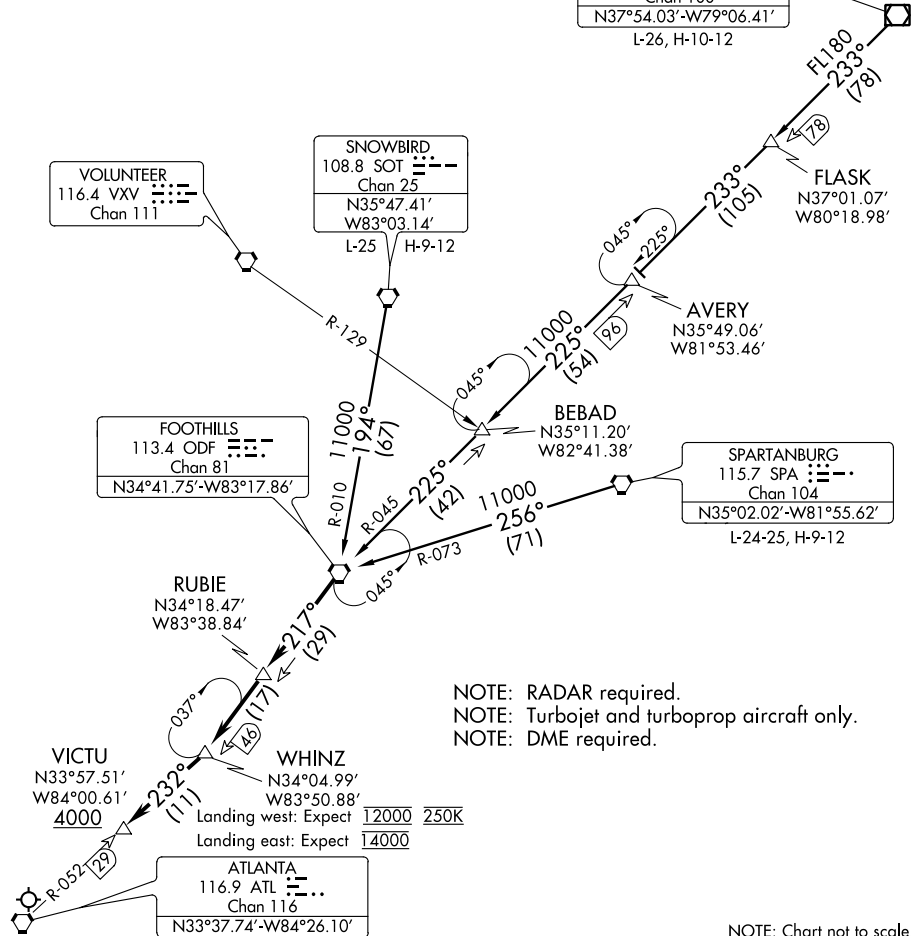
MONTEBELLO  
115.3 MOL   
Chan 100  
N37°54.03'-W79°06.41'  
L-26, H-10-12

VOLUNTEER  
116.4 VXV   
Chan 111

SNOWBIRD  
108.8 SOT   
Chan 25  
N35°47.41'  
W83°03.14'  
L-25 H-9-12

FOOTHILLS  
113.4 ODF   
Chan 81  
N34°41.75'-W83°17.86'

SPARTANBURG  
115.7 SPA   
Chan 104  
N35°02.02'-W81°55.62'  
L-24-25, H-9-12



NOTE: RADAR required.  
NOTE: Turbojet and turboprop aircraft only.  
NOTE: DME required.

NOTE: Chart not to scale.

### ARRIVAL ROUTE DESCRIPTION

**MONTEBELLO TRANSITION (MOL.WHINZ4):** From over MOL VOR/DME on MOL R-233 to FLASK, then on MOL R-233 and ODF R-045 to AVERY, then on ODF R-045 to ODF VORTAC. Thence. . .

**SNOWBIRD TRANSITION (SOT.WHINZ4):** From over SOT VORTAC on SOT R-194 and ODF R-010 to ODF VORTAC. Thence. . .

**SPARTANBURG TRANSITION (SPA.WHINZ4):** From over SPA VORTAC on SPA R-256 and ODF R-073 to ODF VORTAC. Thence. . .

. . . from over ODF VORTAC on ODF R-217 to RUBIE and ODF R-217 to WHINZ, then on ATL R-052 to cross VICTU at or above 4000. Expect RADAR vectors to final approach course after VICTU.

SE-4, 15 AUG 2019 to 12 SEP 2019

SE-4, 15 AUG 2019 to 12 SEP 2019