

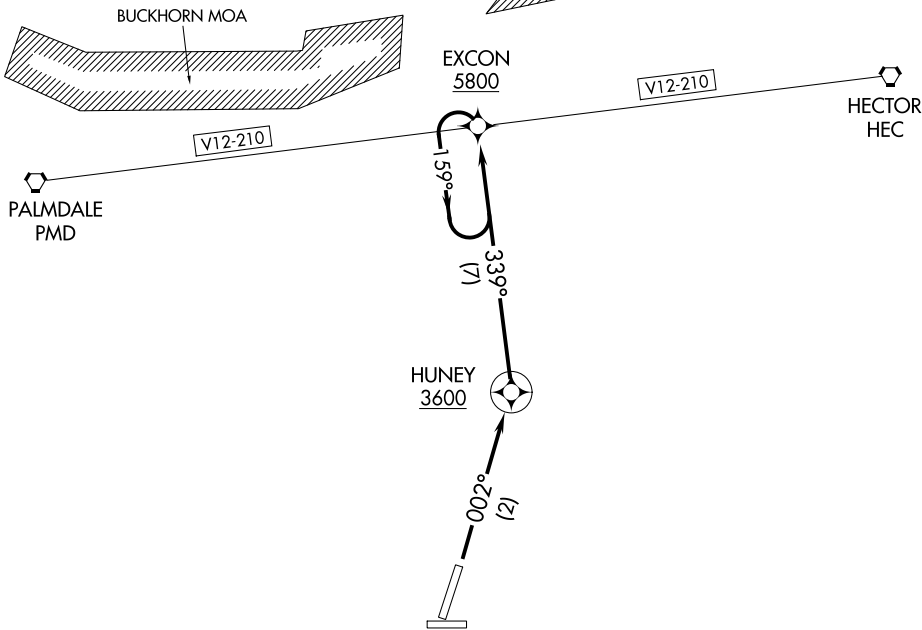
(EXCON1.EXCON) 16091

EXCON ONE DEPARTURE (OBSTACLE) (RNAV)

SL-5822 (FAA)

APPLE VALLEY (APV)
APPLE VALLEY, CALIFORNIA

JOSHUA APP CON
124.55 363.0
RIVERSIDE RADIO
122.2



NOTE: GPS required.

NOTE: RNAV 1.

TAKEOFF MINIMUMS

Rwy 36: 300-1 or standard with a minimum climb gradient of 340' per NM until 5800'.

NOTE: Chart not to scale.

DEPARTURE ROUTE DESCRIPTION

TAKEOFF RUNWAY 36: Climb via 002° course to HUNEY WP, then 339° course to EXCON WP, then climb in EXCON WP holding pattern (hold S left turns 339° inbound) to 7500' MSL then proceed on course.

EXCON ONE DEPARTURE (OBSTACLE) (RNAV)
(EXCON1.EXCON) 15JUN00

APPLE VALLEY, CALIFORNIA
APPLE VALLEY (APV)

SW-3, 20 MAY 2021 to 17 JUN 2021

SW-3, 20 MAY 2021 to 17 JUN 2021