

WAAS CH <b>69314</b> <b>W23A</b>	APP CRS <b>227°</b>	Rwy ldg TDZE Apt Elev	<b>5000</b> <b>8</b> <b>8</b>
--	------------------------	-----------------------------	-------------------------------------

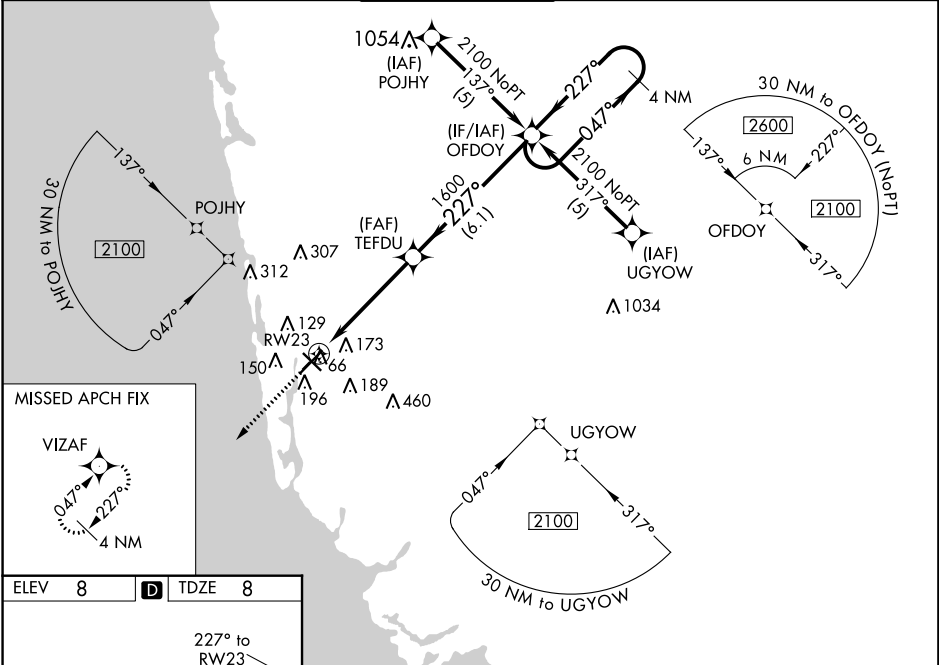
# RNAV (GPS) RWY 23

NAPLES MUNI (APF)

**⚠** Inoperative table does not apply. Baro-VNAV NA when using Southwest Florida Intl altimeter setting. For uncompensated Baro-VNAV systems, LNAV/VNAV NA below -15°C (5°F) or above 48°C (118°F). DME/DME RNP-0.3 NA. Visibility reduction by helicopters NA. When local altimeter setting not received, use Southwest Florida Intl altimeter setting and increase all DA 56 feet and all MDA 60 feet, increase LPV and LNAV/VNAV all Cats visibility ¼ mile.

**MISSED APPROACH:**  
Climb to 2100 direct VIZAF and hold.

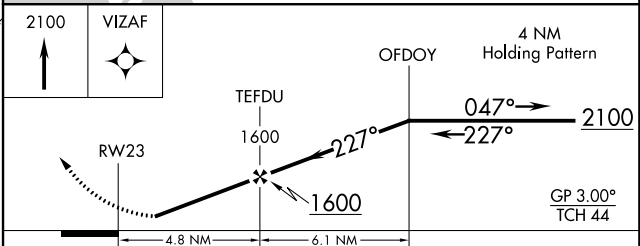
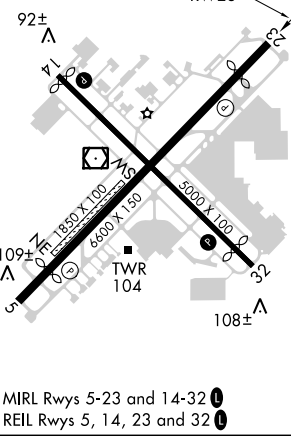
ATIS <b>134.225</b>	FORT MYERS APP CON* <b>119.75 327.8</b>	NAPLES TOWER* <b>128.5 (CTAF) 0</b>	GND CON <b>121.6</b>	NAPLES CLNC DEL <b>118.0</b>
------------------------	--	--	-------------------------	---------------------------------



SE-3, 26 APR 2018 to 24 MAY 2018

SE-3, 26 APR 2018 to 24 MAY 2018

ELEV 8	<b>D</b>	TDZE 8
--------	----------	--------



CATEGORY	A	B	C	D
LPV DA	313-1		305 (400-1)	
LNAV/VNAV DA	461-1½		453 (500-1½)	
LNAV MDA	440-1	432 (500-1)	440-1¼ 432 (500-1¼)	440-1½ 432 (500-1½)
CIRCLING	500-1	492 (500-1)	500-1½ 492 (500-1½)	560-2 552 (600-2)