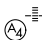


WAAS CH 40313 W36B	APP CRS 006°	Rwy Idg 4146 TDZE 17 Apt Elev 35
--	------------------------	---

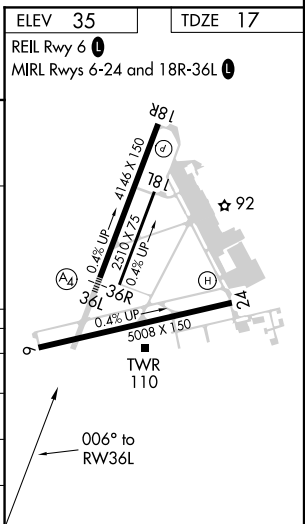
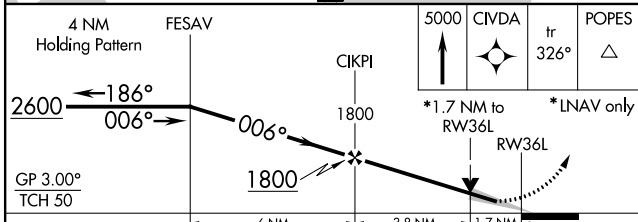
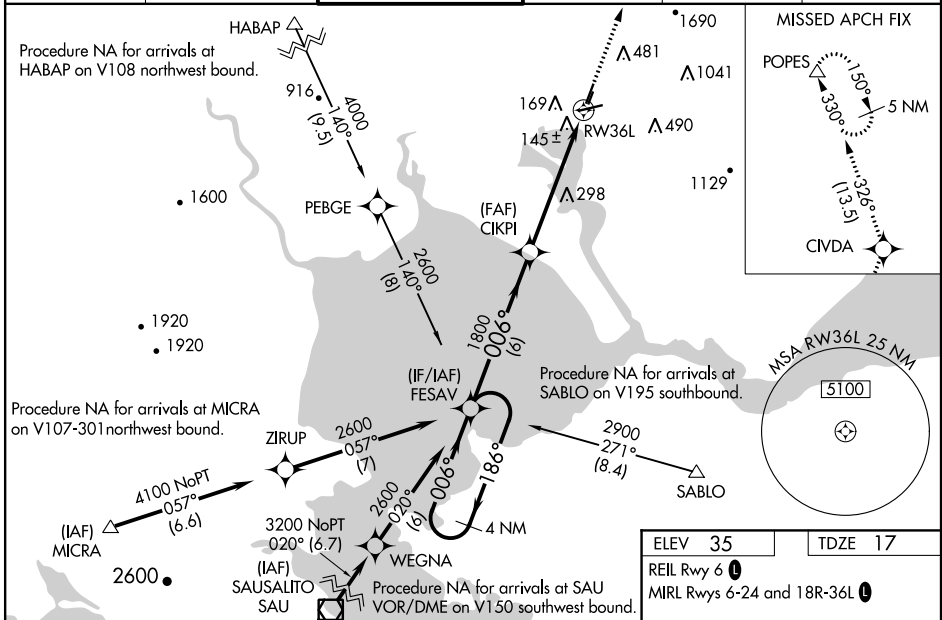
RNAV (GPS) Z RWY 36L

NAPA COUNTY (APC)

▼ For uncompensated Baro-VNAV systems, LNAV/VNAV NA below -15°C (5°F) or above 43°C (109°F). DME/DME RNP-0.3 NA. When local altimeter setting not received, use Concord altimeter setting and increase all DA 41 feet, all MDA 60 feet, and increase visibility LNAV/VNAV all Cats ½ mile and LNAV Cats C/D and Circling Cat C ¼ mile. VDP and Baro-VNAV NA when using Concord altimeter setting. For inop MALS, increase visibility LNAV/VNAV Cat D ¼ mile and LNAV Cats C/D ⅓ mile. For inop MALS when using Concord altimeter setting, increase visibility LPV all Cats ½ mile, LNAV/VNAV all Cats ⅓ mile, and LNAV Cat D ¼ mile. Missed approach requires minimum climb of 480 feet per NM to 2200. If unable to meet climb gradient see RNAV (GPS) Y RWY 36L.

MALS

MISSED APPROACH:
 Climb to 5000 direct CIVDA and on track 326° to POPES and hold, continue climb-in-hold to 5000.

ATIS 124.05	OAKLAND CENTER 127.8 353.5	NAPA TOWER ★ 118.7 (CTAF) 0 257.8	GND CON 121.7	CLNC DEL 127.85	UNICOM 122.95
-----------------------	--------------------------------------	---	-------------------------	---------------------------	-------------------------



CATEGORY	A	B	C	D
LPV DA		267-¾	250 (300-¾)	
LNAV/VNAV DA		372-⅞	355 (400-⅞)	
LNAV MDA	600-¾	583 (600-¾)	600-1⅓	583 (600-1⅓)
CIRCLING	NA			

SW-2, 15 AUG 2019 to 12 SEP 2019

SW-2, 15 AUG 2019 to 12 SEP 2019