

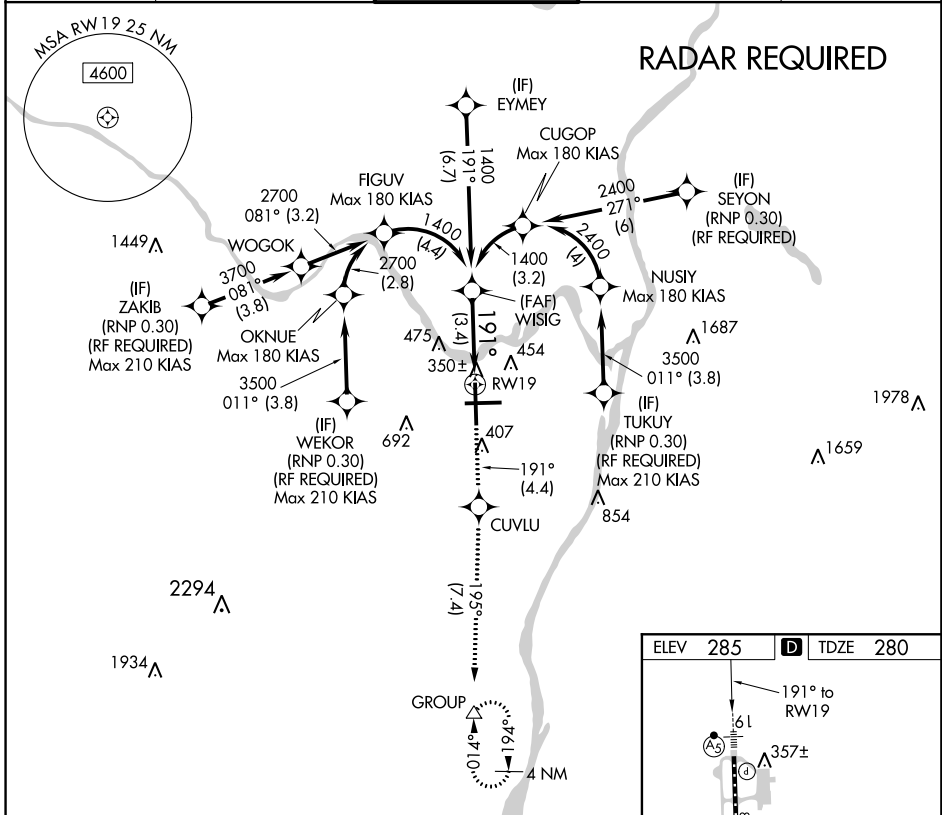
APP CRS	Rwy Idg	<b>8500</b>
<b>191°</b>	TDZE	<b>280</b>
	Apt Elev	<b>285</b>

# RNAV (RNP) Z RWY 19

ALBANY INTL (ALB)

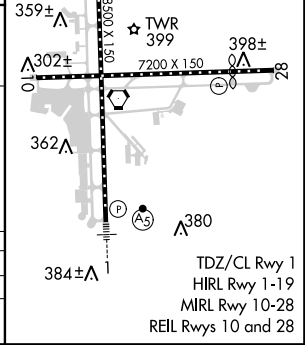
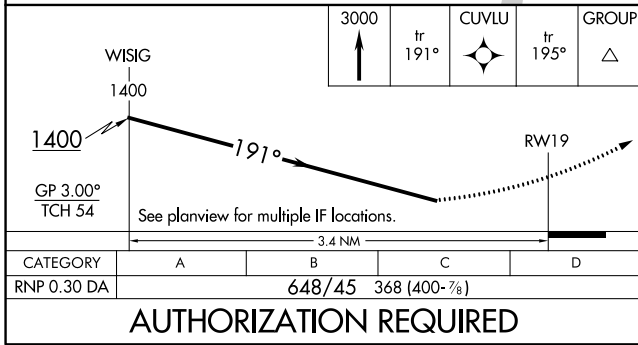
<p><b>GPS required.</b> For uncompensated Baro-VNAV systems, procedure NA below -15°C (3°F) or above 47°C (117°F). For inoperative MALS, increase RNP 0.30 visibility to 1½.</p>	<p>MALSR</p>	<p>MISSED APPROACH: Climb to 3000 on track 191° to CUVLU and on track 195° to GROUP and hold.</p>

D-ATIS <b>120.45</b>	ALBANY APP CON <b>132.825 307.2</b>	ALBANY TOWER <b>119.5 257.8</b>	GND CON <b>121.7 348.6</b>	CLNC DEL <b>127.50</b>
-------------------------	--	------------------------------------	-------------------------------	---------------------------



NE-2. 01 FEB 2018 to 01 MAR 2018

NE-2. 01 FEB 2018 to 01 MAR 2018



**AUTHORIZATION REQUIRED**

CATEGORY	A	B	C	D
RNP 0.30 DA		648/45	368 (400-7/8)	

TDZ/CL Rwy 1  
HIRL Rwy 1-19  
MIRL Rwy 10-28  
REIL Rwy 10 and 28