

WAAS CH <b>97402</b> <b>W01A</b>	APP CRS <b>011°</b>	Rwy Idg <b>8500</b> TDZE <b>284</b> Apt Elev <b>285</b>
--	------------------------	---

# RNAV (GPS) Y RWY 1

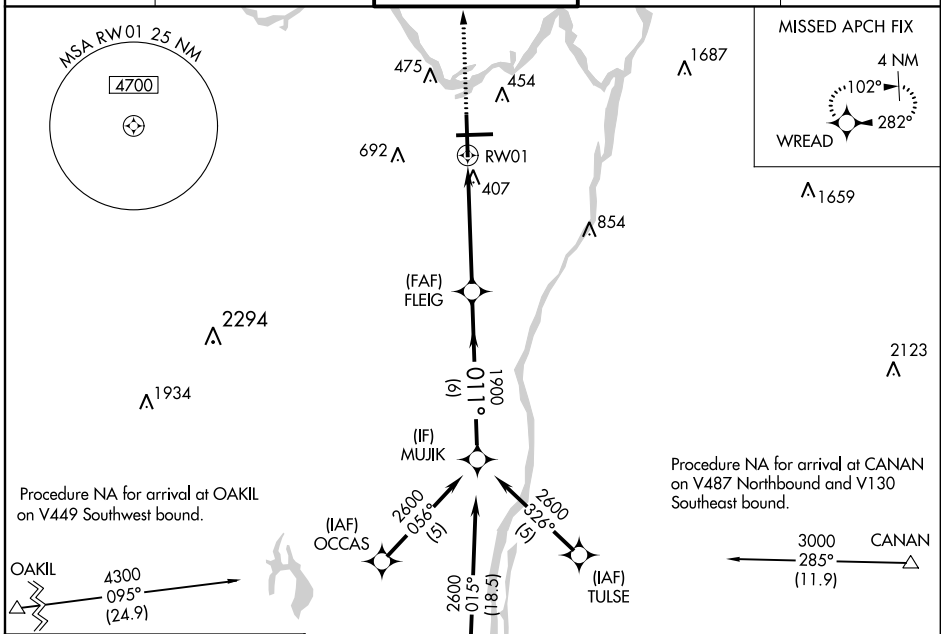
ALBANY INTL (ALB)

For uncompensated Baro-VNAV systems, LNAV/VNAV NA below -18°C (0°F) or above 42°C (107°F). DME/DME RNP-0.3 NA. Circling NA west of Rwy 1-19.

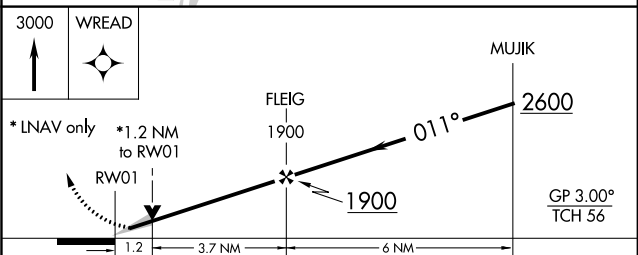
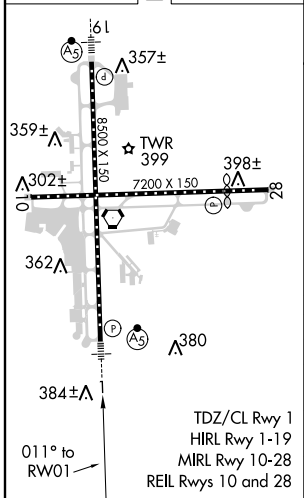


MISSED APPROACH: Climb to 3000 direct WREAD and hold, continue climb-in-hold to 3000.

D-ATIS <b>120.45</b>	ALBANY APP CON <b>132.825 307.2</b>	ALBANY TOWER <b>119.5 257.8</b>	GND CON <b>121.7 348.6</b>	CLNC DEL <b>127.50</b>
-------------------------	--	------------------------------------	-------------------------------	---------------------------



ELEV 285	<b>D</b>	TDZE 284
----------	----------	----------



CATEGORY	A	B	C	D
LPV DA	484/18		200 (200-½)	
LNAV/VNAV DA	687/45		403 (500-¾)	
LNAV MDA	720/24	436 (500-½)	720/40	436 (500-¾)
CIRCLING	820-1	535 (600-1)	820-1½ 535 (600-1½)	840-2 555 (600-2)

NE-2, 21 JUN 2018 to 19 JUL 2018

NE-2, 21 JUN 2018 to 19 JUL 2018