

VUDOO TWO ARRIVAL (RNAV) Transition Routes

POTOMAC APP CON
126.4 282.375
D-ATIS
133.675 251.05
TOWER
118.4 349.0

See following page
for arrival routes

VUDOO
9000

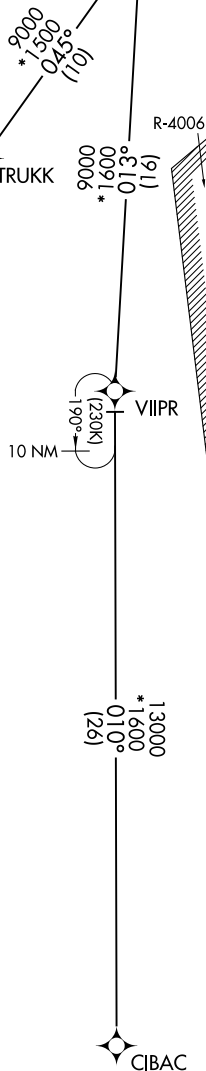
R-6611A & B

R-6613A

R-6601B & C

R-6601A

R-4006



9000
*1500
078°
(16)

BEEVR
12000

6 NM
218°
(210K)

GOLOE
13000

10 NM
211°

11000
2000
030°
(10)

HANKC

13000
2000
022°
*
(16)

THHMP

- NOTE: RADAR required.
- NOTE: RNAV 1.
- NOTE: DME/DME/IRU or GPS required.
- NOTE: P56 area A/B 1.5 NM north of DCA, avoid surface to 18000 MSL.

(CONTINUED ON FOLLOWING PAGE)
(NARRATIVE ON FOLLOWING PAGE)

BEEVR TRANSITION (BEEVR.VUDOO2): (ATC assigned only).
 CIBAC TRANSITION (CIBAC.VUDOO2)
 THHMP TRANSITION (THHMP.VUDOO2)

NOTE: Chart not to scale.

NE-3, 15 JUL 2021 to 12 AUG 2021

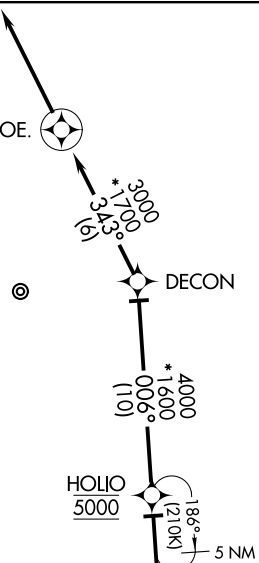
NE-3, 15 JUL 2021 to 12 AUG 2021

VUDOO TWO ARRIVAL (RNAV) Transition Routes

VUDOO TWO ARRIVAL (RNAV) Arrival Routes

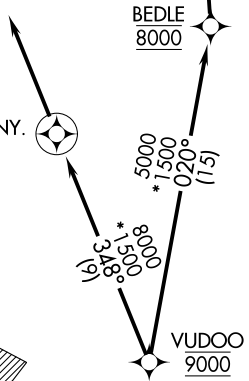
POTOMAC APP CON
126.4 282.375
D-ATIS
133.675 251.05
TOWER
118.4 349.0

REVOE
Landing south: Rwy 19L/R:
Expect RADAR vectors to
final approach course after REVOE.



- NOTE: RADAR required.
- NOTE: RNAV 1.
- NOTE: DME/DME/IRU or GPS required.
- NOTE: P56 area A/B 1.5 NM north of DCA, avoid surface to 18000 MSL.

FUNNY
Landing north: Rwy 1L/R:
Expect RADAR vectors to
final approach course after FUNNY.
8000



R-6612

R-6611A & B

R-6613A

NOTE: Chart not to scale.

ARRIVAL ROUTE DESCRIPTION

LANDING NORTH RWYS 1L/R: From VUDOO on track 348° to cross FUNNY at 8000, then on track 348°. Expect RADAR vectors to final approach course.

LANDING SOUTH RWYS 19L/R: From VUDOO on track 020° to cross BEDLE at 8000, then on track 006° to cross HOLIO at 5000, then on track 006° to DECON, then on track 343° to REVOE, then on track 343°. Expect RADAR vectors to final approach course.

VUDOO TWO ARRIVAL (RNAV) Arrival Routes