

**BUCKO TRANSITION (BUCKO.FRDMM5):**

- NOTE: RADAR required.
- NOTE: RNAV 1.
- NOTE: DME/DME/IRU or GPS required.
- NOTE: Turbojets only, turboprops as assigned by ATC only.
- NOTE: PROHIBITED AREA (P56) 1.5 NM north of DCA  
AVOID - surface to FL180.
- NOTE: Maintain last assigned altitude until cleared to "descend via" the FRDMM5. ARTCC will issue landing direction assignment (north or south) and Potomac TRACON will issue runway assignments.

ALWYZ.FRDMM5) 20JUN19

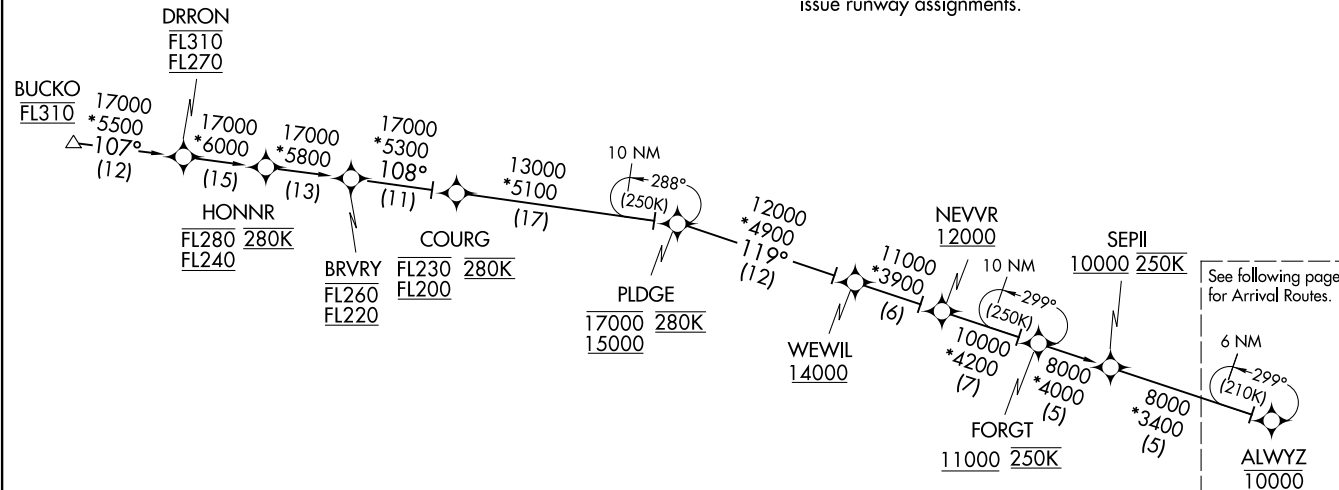
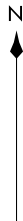
FRDMM FIVE ARRIVAL (RNAV) Transition Route

WASHINGTON, DC

POTOMAC APP CON  
118.675 323.175  
DCA D-ATIS  
132.65  
KADW D-ATIS  
133.675 251.05  
\*KDAA ATIS  
128.175



MORGANTOWN MGW



See following page for Arrival Routes.

(CONTINUED ON FOLLOWING PAGE)

NOTE: Chart not to scale.

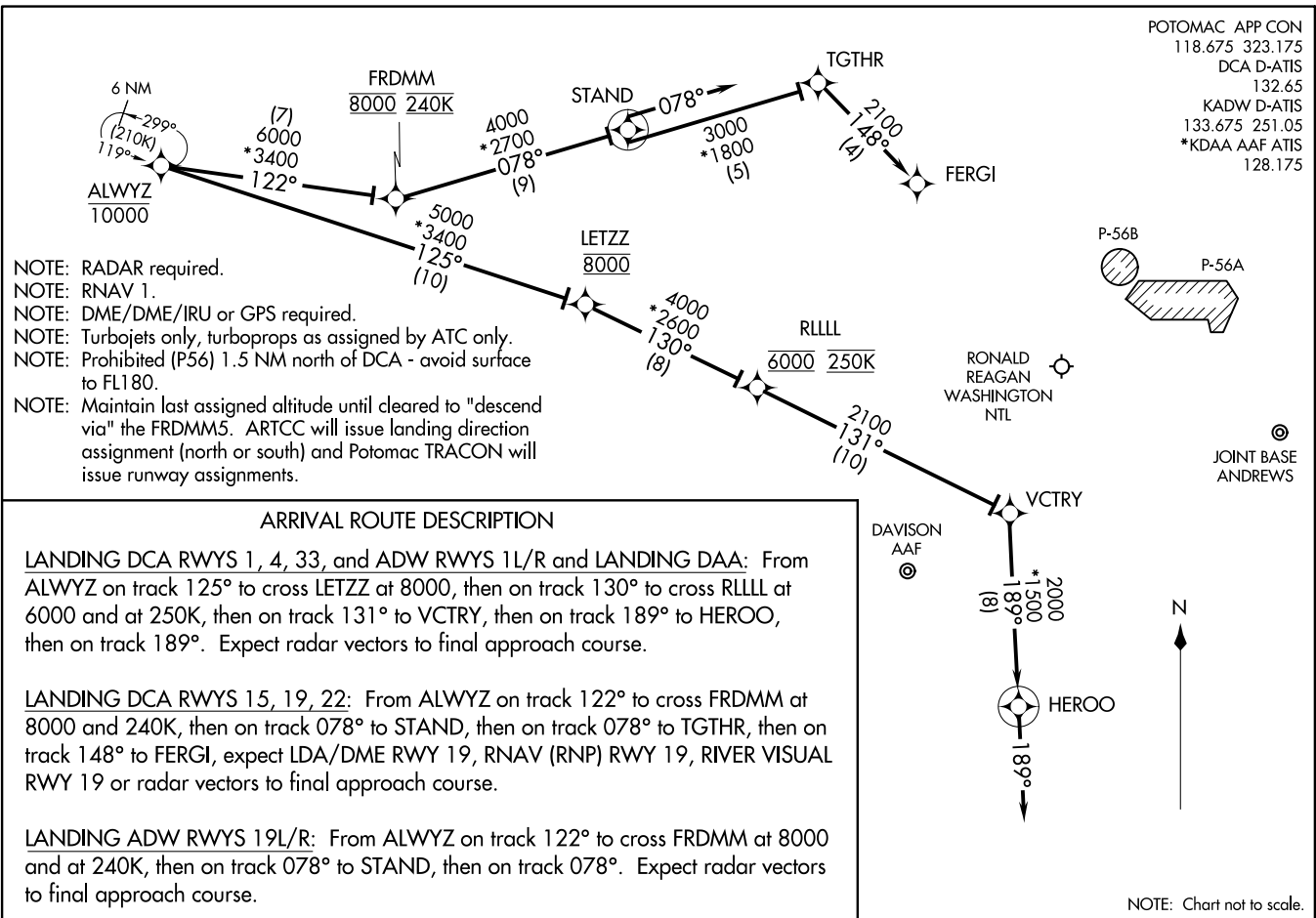
ALWYZ.FRDMM5) 21168

AL-443 (FAA)

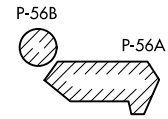
WASHINGTON, DC

FRDMM FIVE ARRIVAL (RNAV) Arrival Routes  
(ALWYZ.FRDMM5) 20JUN19

WASHINGTON, DC



POTOMAC APP CON  
118.675 323.175  
DCA D-ATIS  
132.65  
KADW D-ATIS  
133.675 251.05  
\*KDA AAF ATIS  
128.175



JOINT BASE ANDREWS



NOTE: Chart not to scale.

(ALWYZ.FRDMM5) 21168

AL-443 (FAA)

WASHINGTON, DC