

CAMP SPRINGS, MARYLAND

# TACAN-A

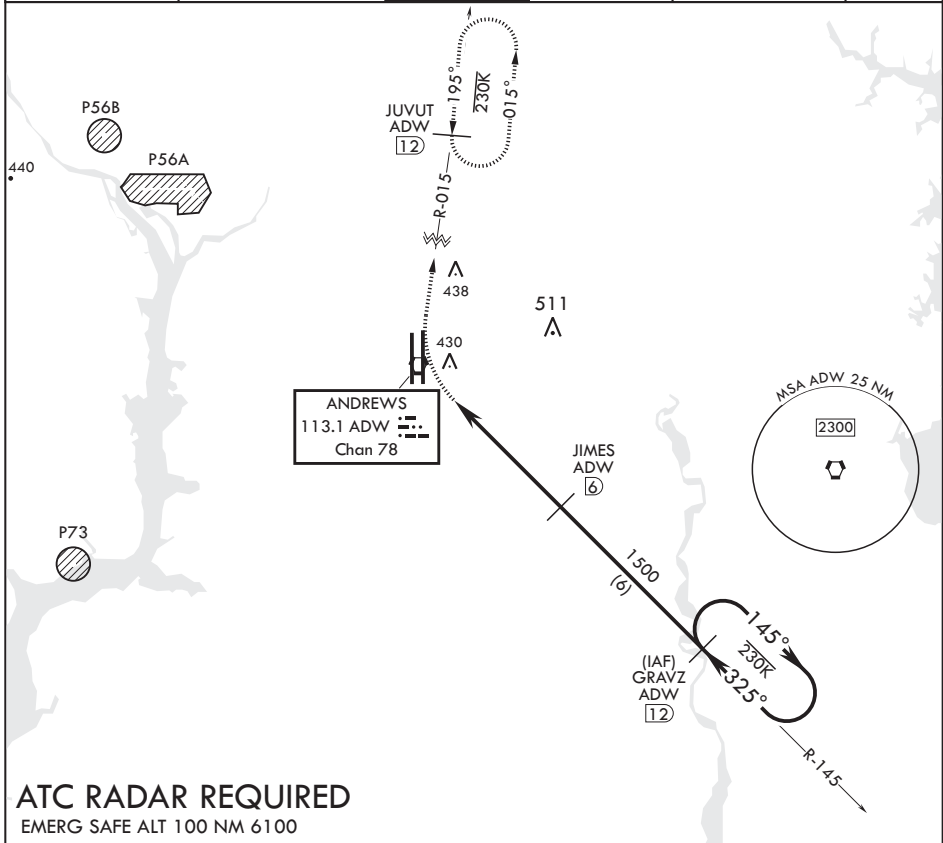
VORTAC ADW 113.1 Chan 78	APCH CRS 325°	Rwy ldg TDZE Arprt Elev	N/A N/A 280
--------------------------------	------------------	-------------------------------	-------------------

AL-561 (USAF)

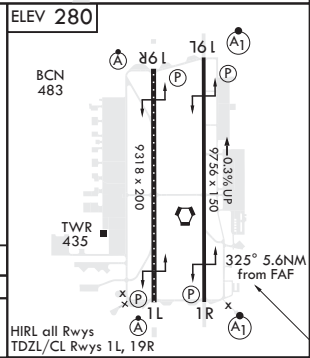
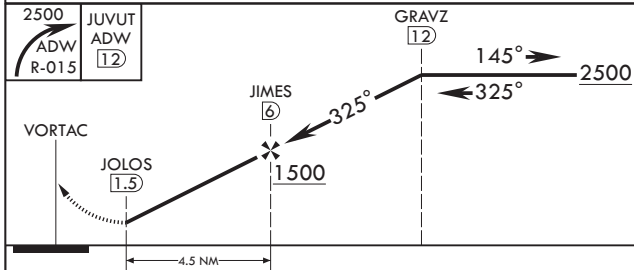
JOINT BASE ANDREWS (KADW)

**⚠** \* Circling not authorized west of Rwy 1L-19R. MISSED APPROACH: Climbing right turn to 2500 via ADW R-015 to JUVUT and hold.

ATIS 133.675 251.05	POTOMAC APP CON 128.0 335.5	<b>TOWER</b> 118.4 349.0	GND CON 121.8 275.8	CLNC DEL 127.55 285.475	CPDLC
------------------------	--------------------------------	-----------------------------	------------------------	----------------------------	-------



**ATC RADAR REQUIRED**  
EMERG SAFE ALT 100 NM 6100



CATEGORY	A	B	C	D	E
<b>C</b> CIRCLING*	780-1¼ 500 (500-1¼)		780-1½ 500 (500-1½)	840-2 560 (600-2)	

CAMP SPRINGS, MARYLAND  
Amdt 2 12OCT17

38°49'N - 76°52'W

JOINT BASE ANDREWS (KADW)

# TACAN-A

NE-3, 15 JUL 2021 to 12 AUG 2021

NE-3, 15 JUL 2021 to 12 AUG 2021