

CAMP SPRINGS, MARYLAND

ILS or LOC RWY 1R

LOC I-VJM 110.5	APCH CRS 010°	Rwy Idg 9756 TDZE 265 Arprt Elev 280
---------------------------	-------------------------	--

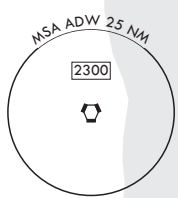
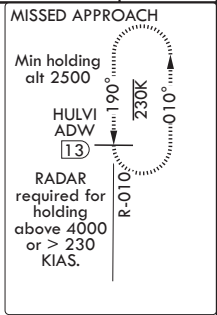
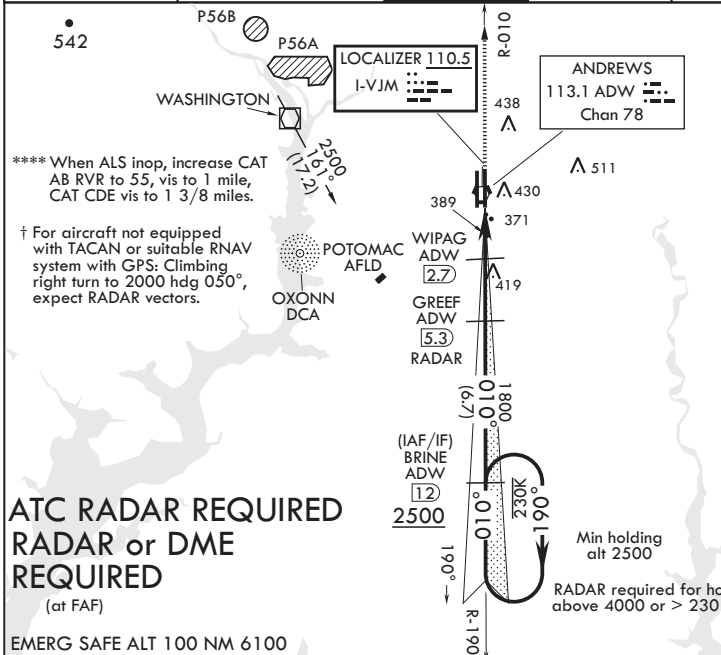
AL-561 (USAF)

JOINT BASE ANDREWS (KADW)

V * When ALS inop, increase RVR to 40, vis to 3/4 mile. RVR 18 authorized with use of Flight Director System or Autopilot System or Heads-Up-Display to DA.
 ** When ALS inop, increase RVR to 55, vis to 1 mile.
 *** Circling not authorized W of Rwy 1L-19R.

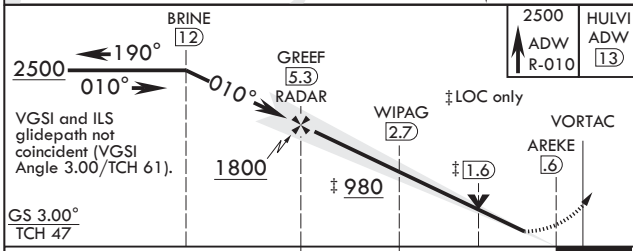
ALS-F-1 † MISSED APPROACH: Climb to 2500 via ADW VORTAC R-010 to HULVI/ADW 13 DME and hold.

ATIS 133.675 251.05	POTOMAC APP CON 128.0 335.5	TOWER 118.4 349.0	GND CON 121.8 275.8	CLNC DEL 127.55 285.475	CPDLC
-------------------------------	---------------------------------------	-----------------------------	-------------------------------	-----------------------------------	-------



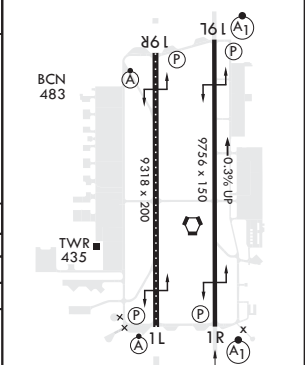
ATC RADAR REQUIRED
RADAR or DME REQUIRED
 (at FAF)

EMERG SAFE ALT 100 NM 6100



ELEV 280	TDZE 265
----------	----------

CATEGORY	A	B	C	D	E
S-ILS 1R*	465/24		200	(200-1/2)	
S-LOC 1R**	640/24	375 (400-1/2)	640/35	375	(400-3/4)
C CIRCLING***	780-1	500 (500-1)	780-1 1/2 500 (500-1 1/2)	840-2	560 (600-2)
NON-DME					
S-LOC 1R****	720/24	455 (500-1/2)	720/45	455	(500-3/4)
C CIRCLING***	780-1	500 (500-1)	780-1 1/2 500 (500-1 1/2)	840-2	560 (600-2)



HIRL all Rwys					
TDZL/CL Rwys 1L, 19R					
FAF to MAP 4.7 NM					
Knots	60	90	120	150	180
Min:Sec	4:42	3:08	2:21	1:53	1:34

CAMP SPRINGS, MARYLAND

38°49'N - 76°52'W

JOINT BASE ANDREWS (KADW)

Orig 15AUG19

ILS or LOC RWY 1R

NE-3, 07 OCT 2021 to 04 NOV 2021

NE-3, 07 OCT 2021 to 04 NOV 2021