

WAAS CH 82202 W15A	APP CRS 155°	Rwy ldg 6224 TDZE 643 Apt Elev 644
---------------------------------	------------------------	---

RNAV (GPS) RWY 15

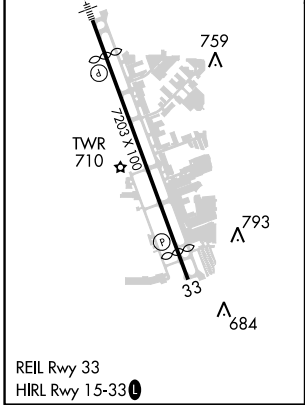
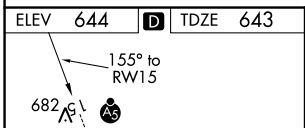
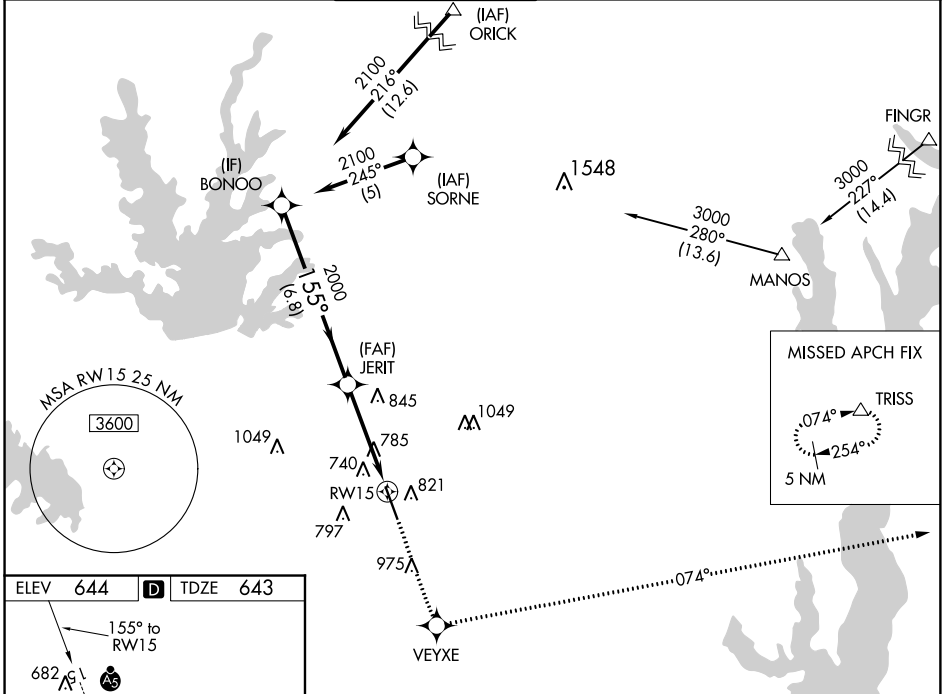
ADDISON (ADS)

▼ When local altimeter setting not received, use Dallas-Love Field altimeter setting and increase all DA 39 feet and MDA 40 feet, increase LNAV/VNAV all Cats and Circling Cat C/D visibility 1/4 mile. Inoperative table does not apply to LPV all Cats and LNAV Cats A/B. Baro-VNAV NA when using Dallas Love Field altimeter setting. For uncompensated Baro-VNAV systems, LNAV/VNAV NA below -16°C (4°F) or above 47°C (117°F). DME/DME RNP-0.3 NA. Helicopter visibility reduction below 1 SM NA. For inoperative MALSR increase LNAV Cat C visibility to 1/4.

MALSR

MISSED APPROACH:
Climb to 3000 direct VEYXE and via 074° track to TRISS and hold.

ATIS 133.4	REGIONAL APP CON 124.3 282.275	ADDISON TOWER ★ 126.0 (CTAF) 0 239.0	GND CON 121.6	CLNC DEL 119.55	UNICOM 122.95
----------------------	--	--	-------------------------	---------------------------	-------------------------



Procedure Turn NA

BONOO **2100** → 155° → JERIT

VGSI and RNAV glidepath not coincident (VGSI Angle 3.00/TCH 60).
GP 3.00° TCH 52

3000 → VEYXE → 074° → TRISS

JERIT **2000** → RWY 15

6.8 NM | 4.1 NM

CATEGORY	A	B	C	D
LPV DA	943-1 300 (300-1)			
LNAV/VNAV DA	1076-1 433 (500-1)			
LNAV MDA	1100-1 457 (500-1)			
CIRCLING	1200-1 556 (600-1)	1240-1½ 596 (600-1½)	1280-2 636 (700-2)	

SC-2. 29 MAR 2018 to 26 APR 2018

SC-2. 29 MAR 2018 to 26 APR 2018