

WAAS CH 81808 W18A	APP CRS 181°	Rwy Idg 6101 TDZE 1414 Apt Elev 1421
--	------------------------	---

RNAV (GPS) RWY 18

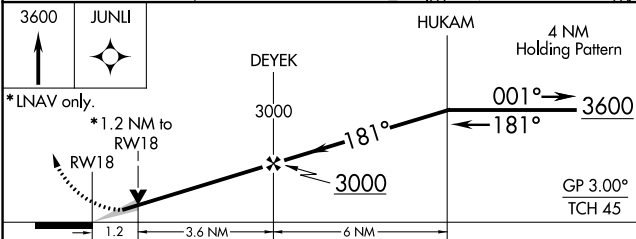
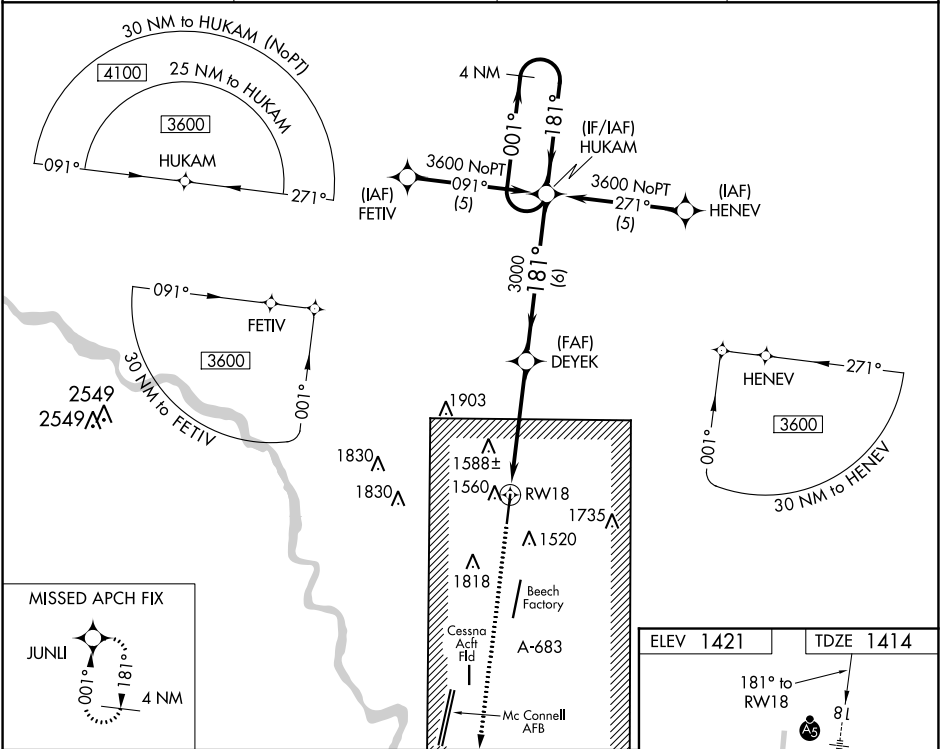
COLONEL JAMES JABARA (A.A.O)

⚠ For inoperative MALSR, increase LPV all Cats visibility to 1 mile and LNAV Cat D visibility to 1½. DME/DME RNP-0.3 NA. When local altimeter setting not received, use Wichita Dwight D Eisenhower Ntl altimeter setting and increase all DA/MDA 40 feet. VDP NA with Wichita Dwight D Eisenhower Ntl altimeter setting.

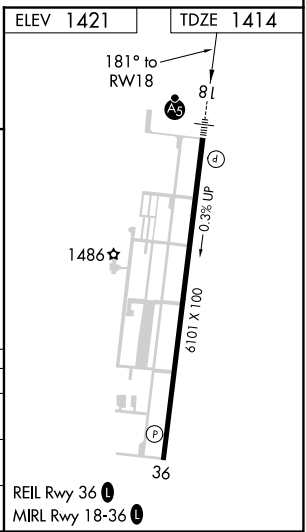
MALSR

MISSED APPROACH: Climb to 3600 direct JUNLI and hold.

ASOS 134.025	WICHITA APP CON 134.8 269.1	CLNC DEL 125.0	UNICOM 122.7 (CTAF) Ⓛ
------------------------	---------------------------------------	--------------------------	---------------------------------



CATEGORY	A	B	C	D
LPV DA	1680-½ 266 (300-½)			
LNAV MDA	1820-½ 406 (400-½)	1820-¾ 406 (400-¾)	1820-1 406 (400-1)	1820-1 406 (400-1)
CIRCLING	1880-1 459 (500-1)	1880-1½ 459 (500-1½)	2120-2¼ 699 (700-2¼)	2120-2¼ 699 (700-2¼)



NC-2, 02 DEC 2021 to 30 DEC 2021

NC-2, 02 DEC 2021 to 30 DEC 2021