

APP CRS	Rwy Idg	2936
177°	TDZE	832
	Apt Elev	832

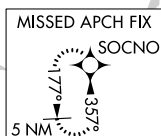
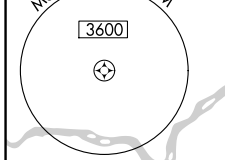
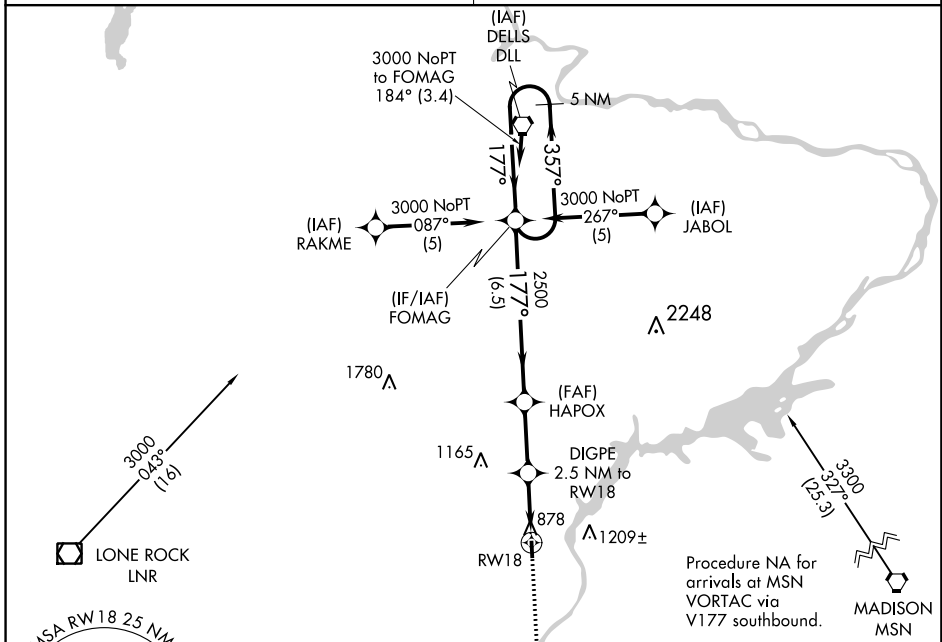
RNAV (GPS) RWY 18

SAUK-PRAIRIE (91C)

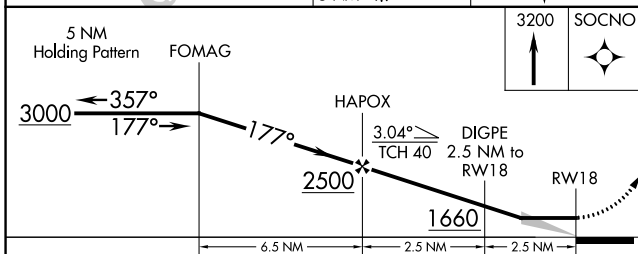
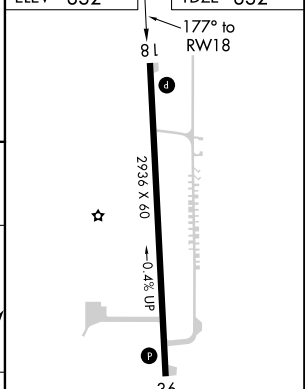
NA Use Dane County Rgnl-Truax Field altimeter setting; if not received use Baraboo altimeter setting. DME/DME RNP-0.3 NA.

MISSED APPROACH: Climb to 3200 direct SOCNO and hold.

MADISON APP CON*	CTAF
135.45 343.7	122.9 0



ELEV 832	TDZE 832
----------	----------



CATEGORY	A	B	C	D
LNAV MDA	1400-1	568 (600-1)		NA
CIRCLING	1400-1	568 (600-1)		NA

MIRL Rwy 18-36 0
REIL Rwys 18 and 36 0

EC-3, 04 JAN 2018 to 01 FEB 2018

EC-3, 04 JAN 2018 to 01 FEB 2018

APP CRS	Rwy Idg	2936
357°	TDZE	832
	Apt Elev	832

RNAV (GPS) RWY 36

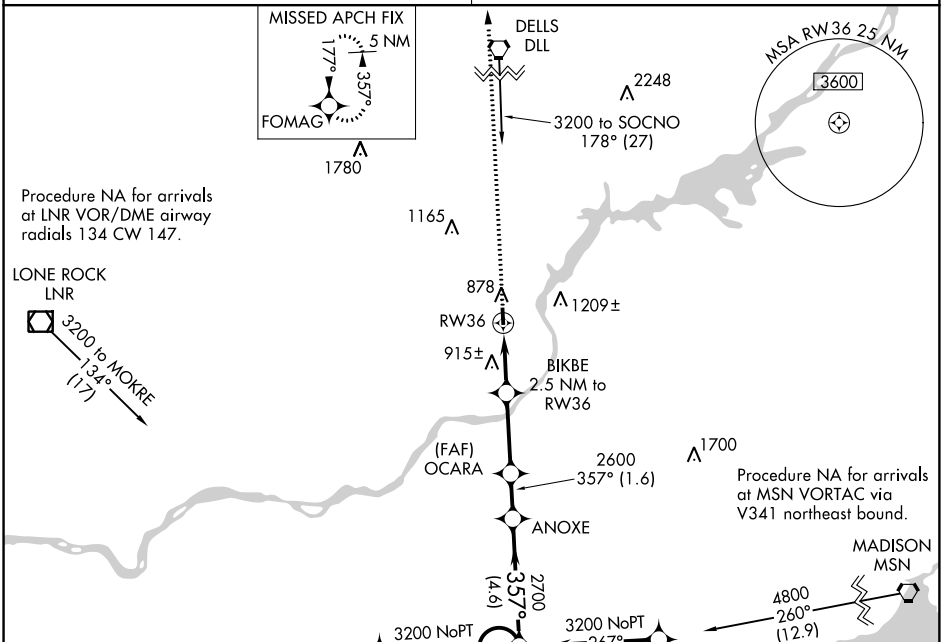
SAUK-PRAIRIE (91C)

▲ Use Dane County Rgnl-Truax Field altimeter setting; if not received, use Baraboo altimeter setting. DME/DME RNP-0.3 NA.
▲ NA Visibility reduction by helicopters NA.

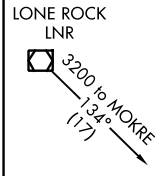
MISSED APPROACH: Climb to 3000 direct FOMAG and hold.

MADISON APP CON★ **135.45 343.7**

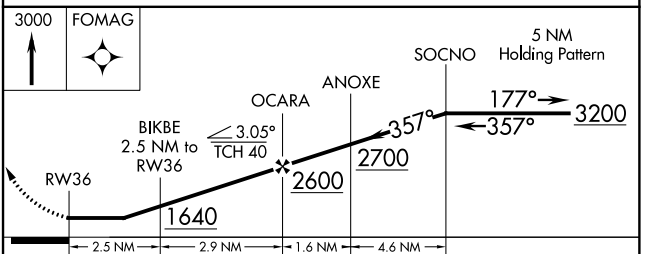
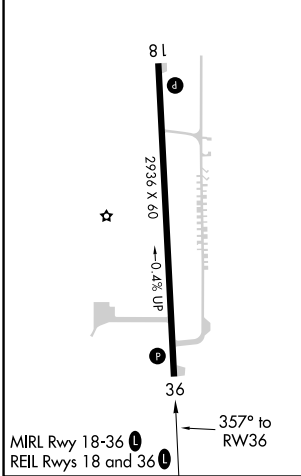
CTAF **122.9**



Procedure NA for arrivals at LNR VOR/DME airway radials 134 CW 147.



ELEV 832	TDZE 832
----------	----------



CATEGORY	A	B	C	D
LNAV MDA	1400-1	568 (600-1)		NA
CIRCLING	1400-1	568 (600-1)		NA

EC-3, 04 JAN 2018 to 01 FEB 2018

EC-3, 04 JAN 2018 to 01 FEB 2018