

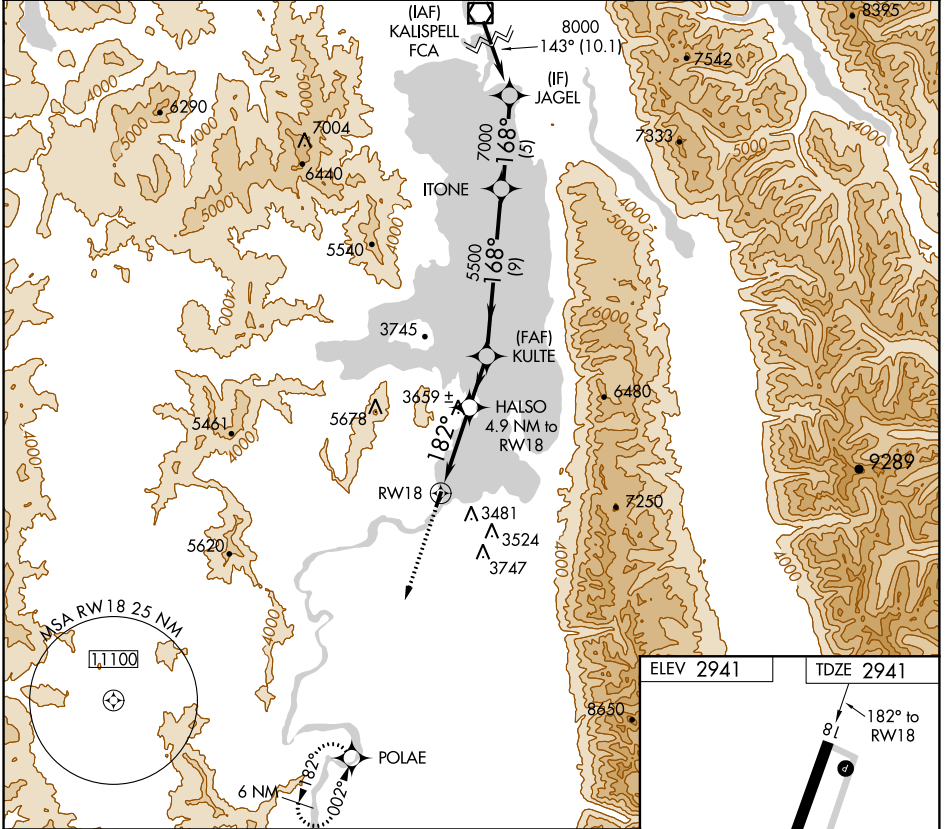
APP CRS	Rwy Idg	<b>4195</b>
<b>182°</b>	TDZE	<b>2941</b>
	Apt Elev	<b>2941</b>

# RNAV (GPS) RWY 18

POLSON (8S1)

<p>Procedure NA at night. DME/DME RNP-0.3 NA. Use Glacier Park Intl altimeter setting. Helicopter visibility reduction below 1 SM NA.</p>	<p>MISSED APPROACH: Climb to 9200 direct POLAE and hold.</p>
---	--

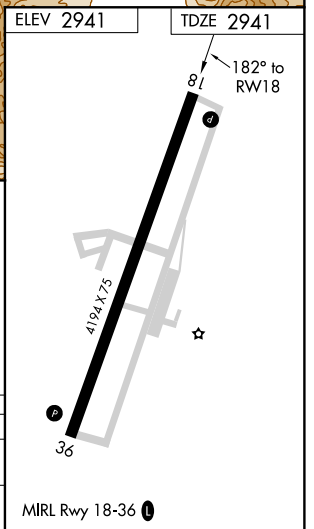
GLACIER PARK INTL ASOS <b>132.625</b>	SALT LAKE CENTER <b>133.4 285.4</b>	UNICOM <b>122.8 (CTAF) 0</b>
--	--	---------------------------------



NW-1, 29 MAR 2018 to 26 APR 2018

NW-1, 29 MAR 2018 to 26 APR 2018

9200	POLAE	HALSO 4.9 NM to RWY 18	KULTE	ITONE	JAGEL	FCA VOR/DME
		≤ 3.09° TCH 30			8000	Procedure Turn NA
		182°	5500	7000	8000	
		4.9 NM	2.9 NM	9 NM	5 NM	10.1 NM
CATEGORY	A	B	C	D		
LNAV MDA	4480-1¼ 1539 (1600-1¼)	4480-1½ 1539 (1600-1½)		NA		
CIRCLING	4480-1¼ 1539 (1600-1¼)	4480-1½ 1539 (1600-1½)		NA		



APP CRS	Rwy Idg	<b>4195</b>
<b>013°</b>	TDZE	<b>2941</b>
	Apt Elev	<b>2941</b>

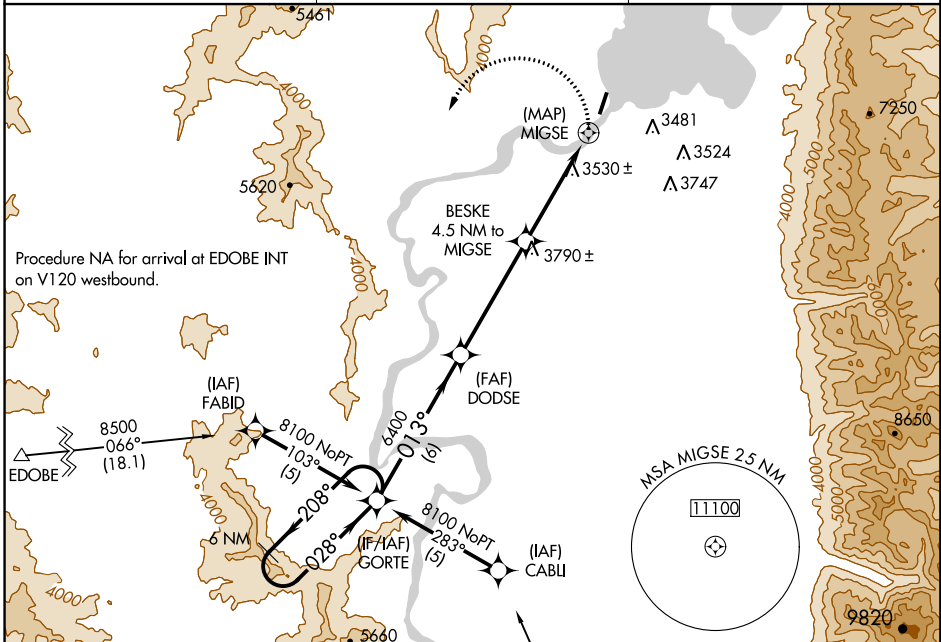
# RNAV (GPS) RWY 36

POLSON (8S1)

**NA** Procedure NA at night. DME/DME RNP-0.3 NA. Use Glacier Park Intl altimeter setting. Helicopter visibility reduction below 1 SM NA.

**MISSED APPROACH:** Climbing left turn to 9000 direct GORTE WP and hold.

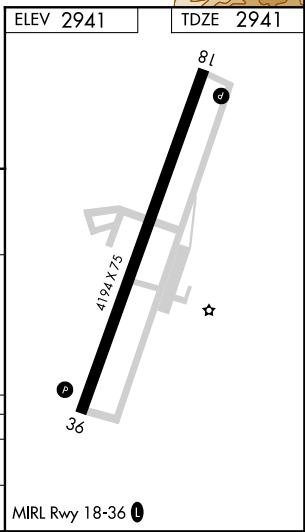
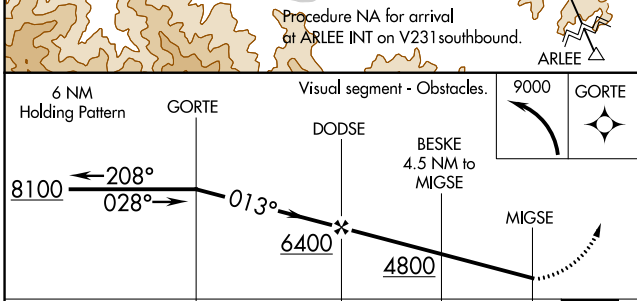
GLACIER PARK INTL ASOS <b>132.625</b>	SALT LAKE CENTER <b>133.4 285.4</b>	UNICOM <b>122.8 (CTAF)</b>
--	--	-------------------------------



NW-1, 29 MAR 2018 to 26 APR 2018

NW-1, 29 MAR 2018 to 26 APR 2018

ELEV 2941	TDZE 2941
-----------	-----------



CATEGORY	A	B	C	D
LNAV	4340-1¼ 1399 (1400-1¼)	4340-1½ 1399 (1400-1½)		NA
CIRCLING	4340-1¼ 1399 (1400-1¼)	4340-1½ 1399 (1400-1½)		NA