

APP CRS <b>194°</b>	Rwy Idg TDZE Apt Elev	<b>N/A</b> <b>N/A</b> <b>5915</b>
------------------------	-----------------------------	---

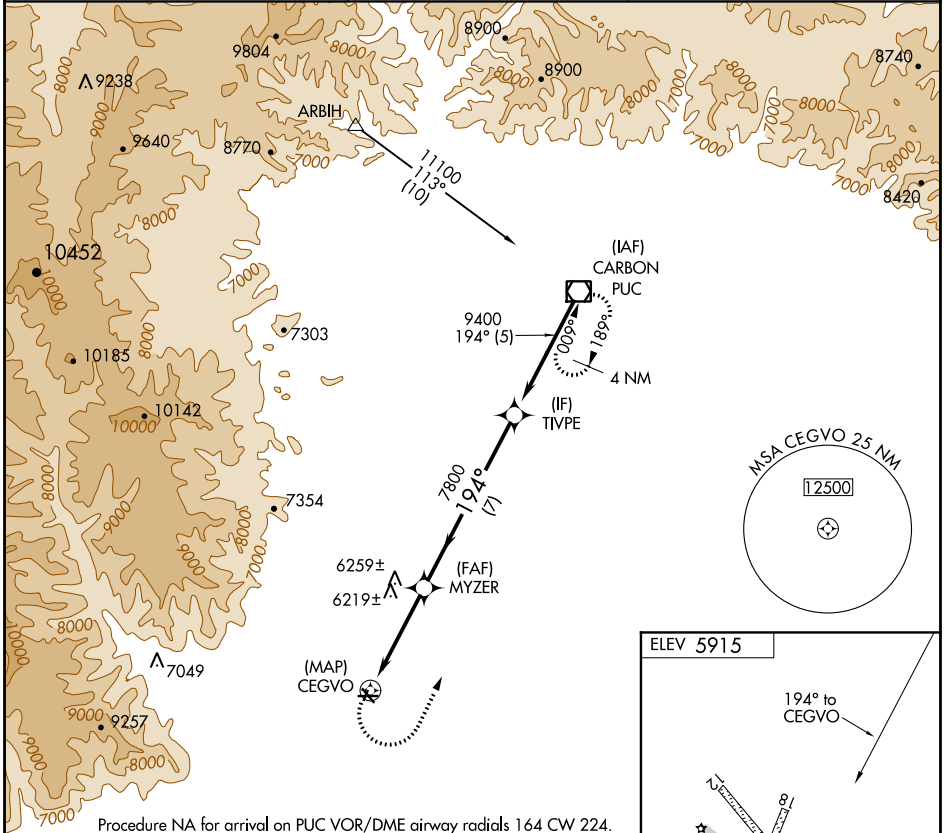
# RNAV (GPS)-C

HUNTINGTON MUNI. (69V)

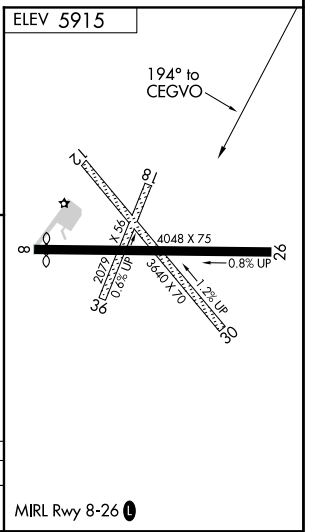
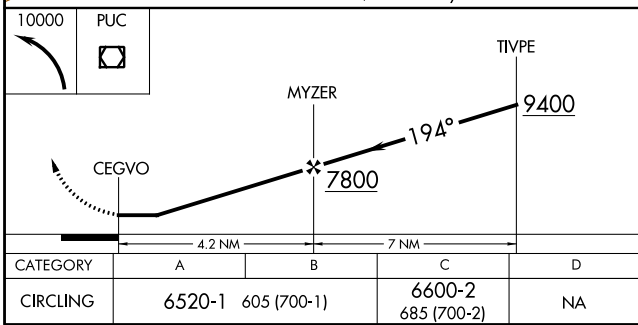
**NA** Rwy 8, 12, 26, 30 helicopter visibility reduction below 1 SM NA.  
DME/DME RNP-0.3 NA. Procedure NA at night. Use Price altimeter setting; when not received, procedure NA.

**MISSED APPROACH:** Climbing left turn to 10000 direct PUC VOR/DME and hold.

PUC ASOS <b>135.425</b>	SALT LAKE CENTER <b>133.9 370.85</b>	UNICOM <b>122.8 (CTAF)</b>
----------------------------	---	-------------------------------



Procedure NA for arrival on PUC VOR/DME airway radials 164 CW 224.



SW-4, 30 DEC 2021 to 27 JAN 2022

SW-4, 30 DEC 2021 to 27 JAN 2022

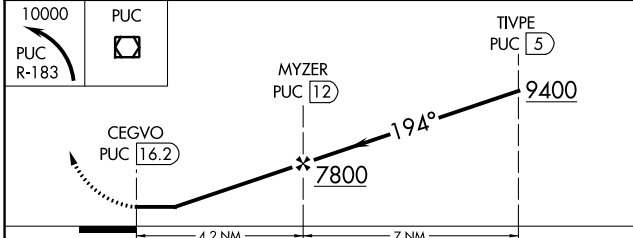
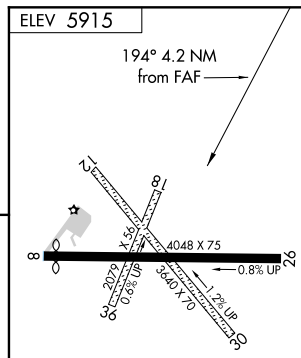
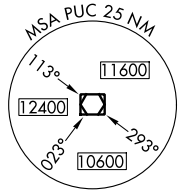
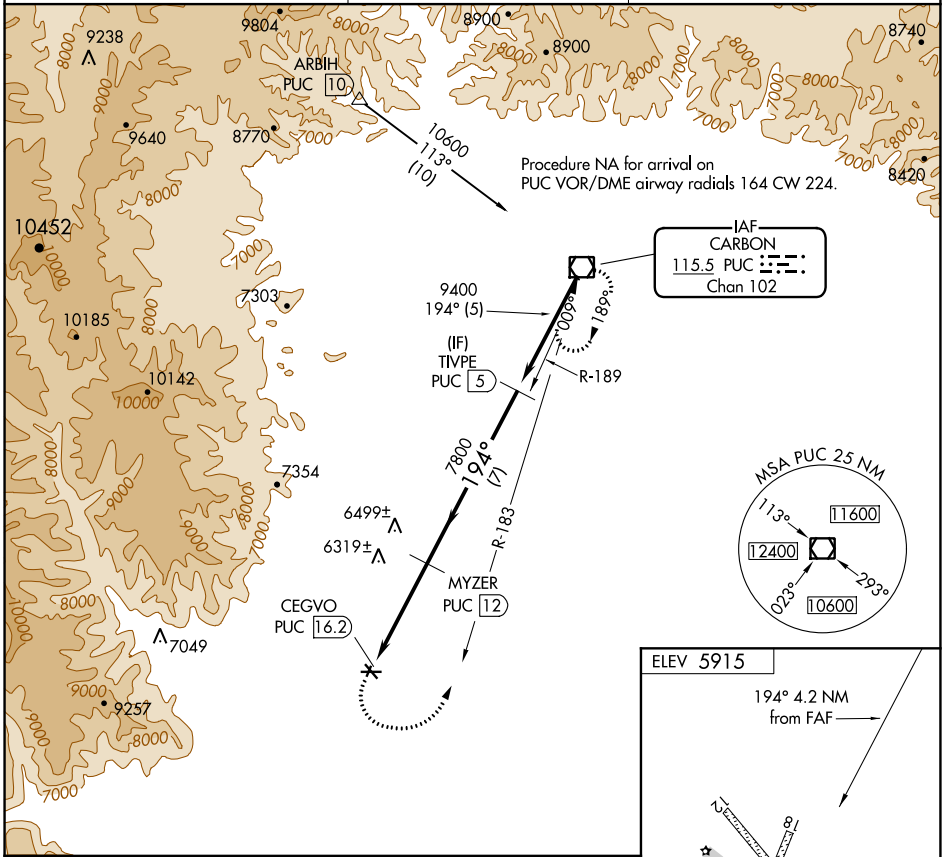
VOR/DME PUC <b>115.5</b> Chan <b>102</b>	APP CRS <b>194°</b>	Rwy Idg TDZE Apt Elev <b>N/A</b> <b>N/A</b> <b>5915</b>
--	------------------------	--

# VOR-B

HUNTINGTON MUNI (69V)

**⚠** Rwy 8, 12, 26, 30 helicopter visibility reduction below 1 SM NA.  
**⚠** NA DME required. Procedure NA at night. Use Price altimeter setting; when not received, procedure NA.  
 MISSED APPROACH: Climbing left turn to 10000 on PUC VOR/DME R-183 to PUC VOR/DME and hold.

PUC ASOS <b>135.425</b>	SALT LAKE CENTER <b>133.9 370.85</b>	UNICOM <b>122.8</b> (CTAF) <b>📻</b>
----------------------------	---	--



CATEGORY	A	B	C	D
CIRCLING	6620-1	705 (800-1)	6620-2 705 (800-2)	NA

MIRL Rwy 8-26 **📻**

SW-4, 30 DEC 2021 to 27 JAN 2022

SW-4, 30 DEC 2021 to 27 JAN 2022