

WAAS CH 56611 W23A	APP CRS 233°	Rwy Idg TDZE 431 Apt Elev 434
---------------------------------	------------------------	------------------------------------------------------

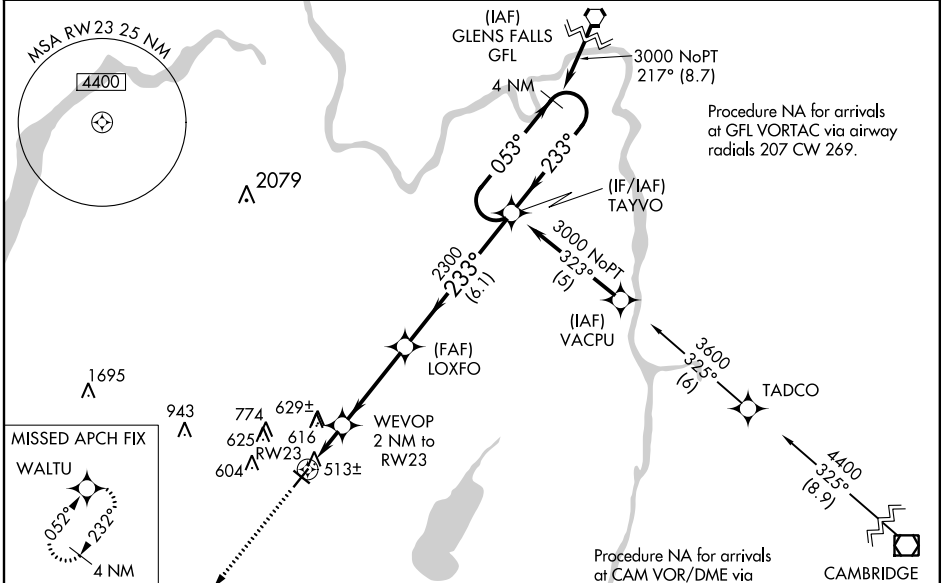
RNAV (GPS) RWY 23

SARATOGA COUNTY (5B2)

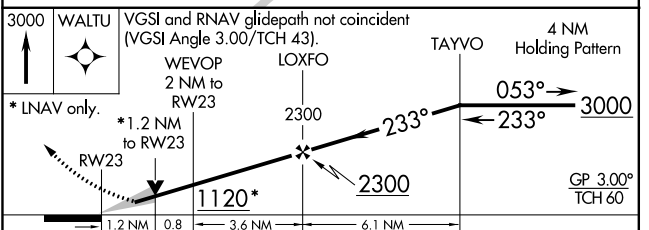
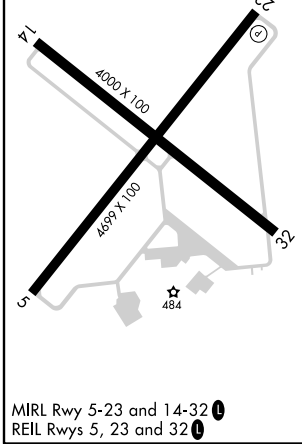
Baro-VNAV NA when using Albany altimeter setting. For uncompensated Baro-VNAV systems, LNAV/VNAV NA below -15°C (5°F) or above 48°C (118°F). DME/DME RNP -0.3 NA. Helicopter visibility reduction below 3/4 SM NA. When local altimeter setting not received use Albany altimeter setting and increase all DA 64 feet, and MDA 80 feet. Increase LPV and LNAV/VNAV all Cats visibility 1/4 mile. Increase LNAV and Circling Cat. C visibility 1/4 mile and Circling Cat. D visibility 1/2 mile. VDP NA when using Albany altimeter setting. Night landing: Rwy 5, 14, 32 NA.

MISSED APPROACH: Climb to 3000 direct WALTU and hold.

AWOS-3 132.025	ALBANY APP CON 118.05 263.075	CLNC DEL (GCO) 118.125	UNICOM 123.075(CTAF) 0
--------------------------	-----------------------------------------	----------------------------------	----------------------------------



ELEV 434	TDZE 431
233° to RWY 23	



CATEGORY	A	B	C	D
LPV DA	745-1 314 (400-1)			
LNAV/ VNAV DA	1046-2 1/4 615 (700-2 1/4)			
LNAV MDA	860-1 429 (500-1)	860-1 1/4 429 (500-1 1/4)	860-1 1/2 429 (500-1 1/2)	
CIRCLING	1000-1 566 (600-1)	1020-1 586 (600-1)	1080-1 3/4 646 (700-1 3/4)	1100-2 666 (700-2)

NE-2, 01 MAR 2018 to 29 MAR 2018

NE-2, 01 MAR 2018 to 29 MAR 2018

APP CRS 052°	Rwy Idg 4699
	TDZE 434
	Apt Elev 434

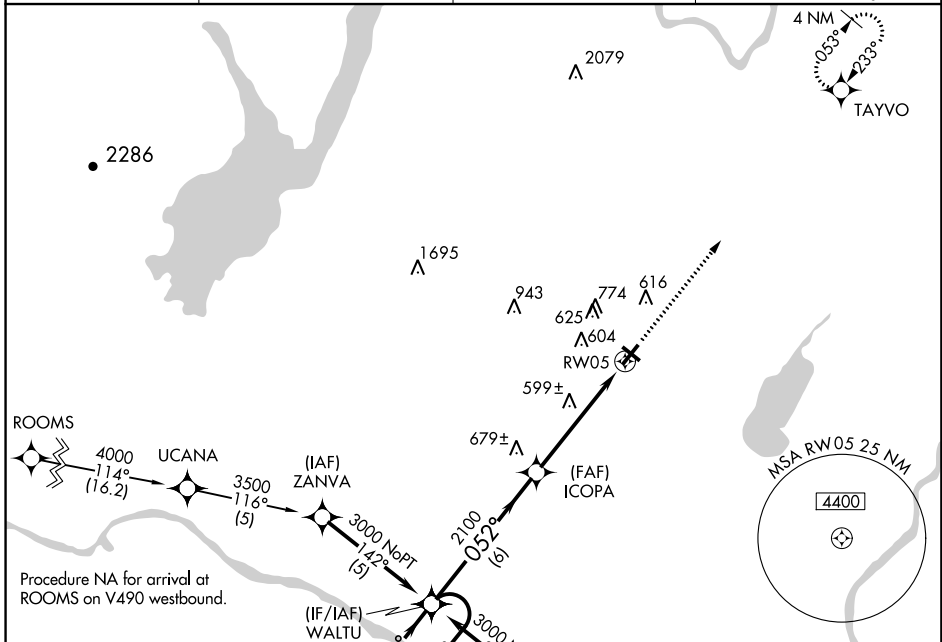
RNAV (GPS) RWY 5

SARATOGA COUNTY (5B2)

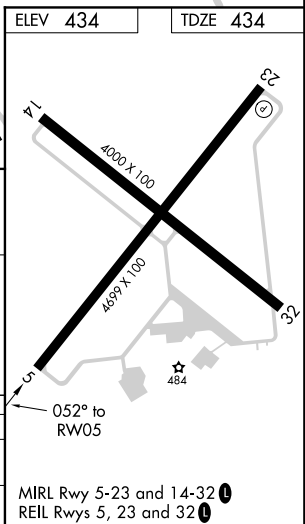
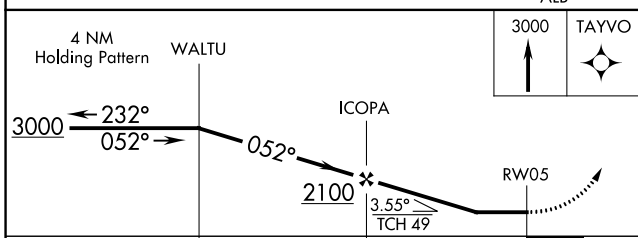
NA DME/DME RNP-0.3 NA. Helicopter visibility reduction below 1 SM NA. When local altimeter setting not received, use Albany altimeter setting and increase all MDA 80 feet, LNAV Cat C/D, Circling Cat C visibility 1/4 mile, and Circling Cat D visibility 1/2 mile. Night landing: Rwy 5, 14, 32 NA.

MISSED APPROACH: Climb to 3000 direct TAYVO and hold.

AWOS-3 132.025	ALBANY APP CON 118.05 263.075	CLNC DEL (GCO) 118.125	UNICOM 123.075 (CTAF) 0
--------------------------	-----------------------------------------	----------------------------------	-----------------------------------



ELEV 434	TDZE 434
----------	----------



CATEGORY	A	B	C	D
LNAV MDA	860-1	426 (500-1)	860-1 1/4	426 (500-1 1/4)
CIRCLING	1000-1 566 (600-1)	1020-1 586 (600-1)	1080-1 1/4 646 (700-1 1/4)	1100-2 666 (700-2)

NE-2. 01 MAR 2018 to 29 MAR 2018

NE-2. 01 MAR 2018 to 29 MAR 2018

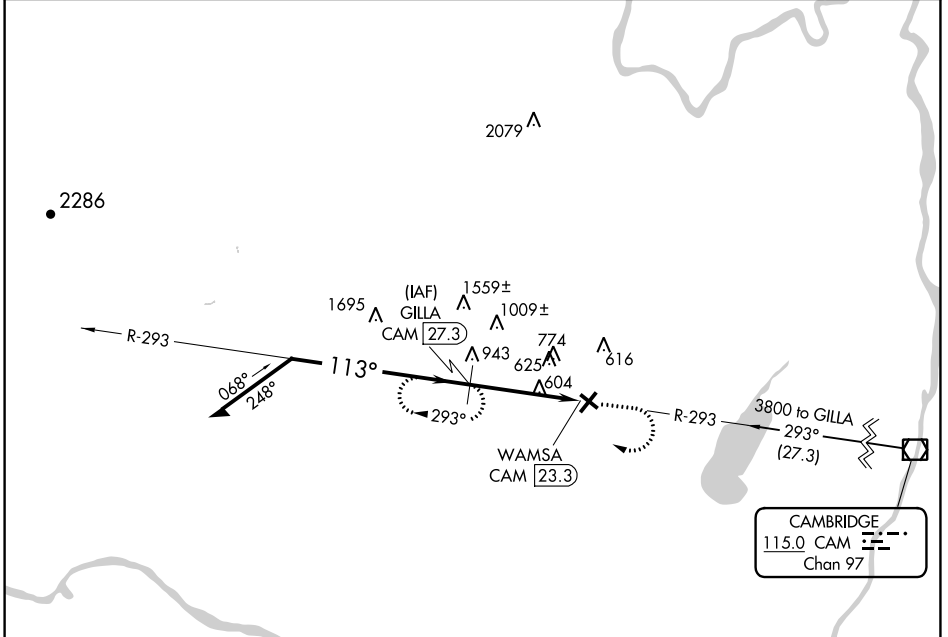
VOR/DME CAM 115.0 Chan 97	APP CRS 113°	Rwy Idg TDZE Apt Elev	N/A N/A 434
-----------------------------------------------	------------------------	-----------------------------	----------------------------------------

VOR/DME-A
SARATOGA COUNTY (5B2)

NA When local altimeter setting not received use Albany altimeter setting and increase all MDA 80 feet, and Cat A, C and D visibility ¼ mile.
Night landing: 5, 14, 32 NA. Helicopter visibility reduction below 1 SM NA.

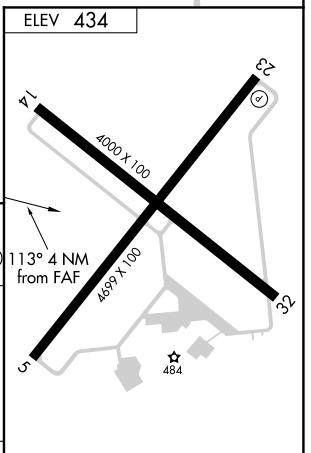
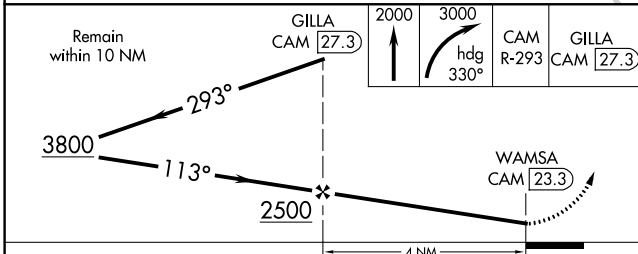
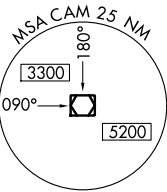
MISSED APPROACH: Climb to 2000 then climbing right turn to 3000 via heading 330° and CAM VOR/DME R-293 to GILLA/CAM 27.3 DME and hold.

AWOS-3 132.025	ALBANY APP CON 118.05 263.075	CLNC DEL (GCO) 118.125	UNICOM 123.075(CTAF) 0
--------------------------	-----------------------------------------	----------------------------------	----------------------------------



NE-2, 01 MAR 2018 to 29 MAR 2018

NE-2, 01 MAR 2018 to 29 MAR 2018



CATEGORY	A	B	C	D
CIRCLING	1260-1 826 (900-1)	1260-1¼ 826 (900-1¼)	1260-2½ 826 (900-2½)	1260-2¾ 826 (900-2¾)

MIRL Rwy 5-23 and 14-32 0
REIL Rwy 5, 23 and 32 0