

VORTAC ENO <b>111.4</b> Chan <b>51</b>	APP CRS <b>331°</b>	Rwy Idg TDZE Apt Elev <b>NA</b> <b>NA</b> <b>106</b>
--	------------------------	---

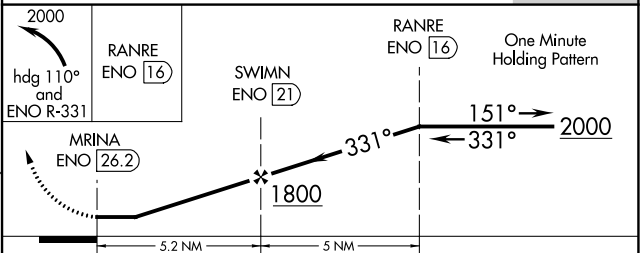
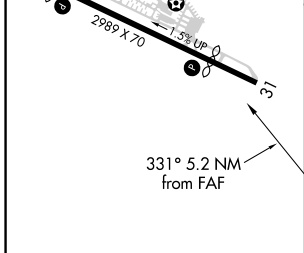
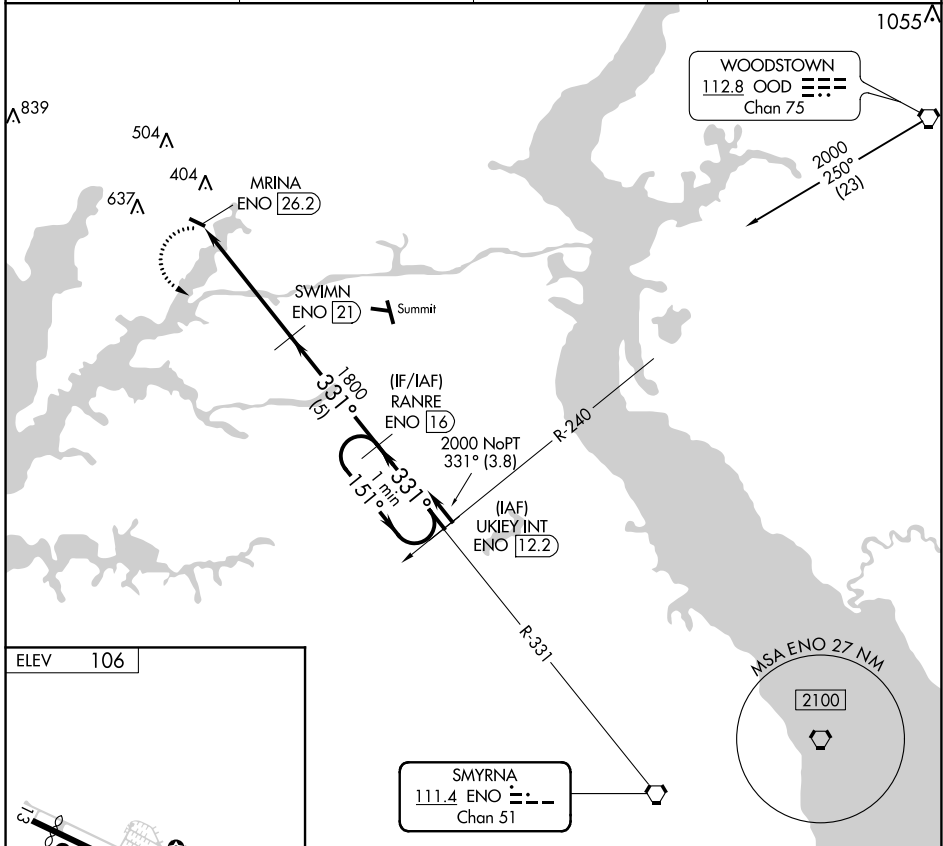
# VOR/DME-A

CLAREMONT (58M)

**NA** Use Middletown, DE altimeter setting; when not received, use Wilmington, DE altimeter setting. Helicopter visibility reduction below 1 SM NA. Procedure NA at night.

MISSED APPROACH: Climbing left turn to 2000 on heading 110° and ENO R-331 to RANRE/ENO 16 DME and hold.

EYV AWOS-3 <b>132.325</b>	PHILADELPHIA APP CON <b>118.35 323.1</b>	UNICOM <b>122.8</b> (CTAF)	<b>123.0</b>
------------------------------	---	-------------------------------	--------------



REIL Rwys 13 and 31	MIRL Rwy 13-31	<table border="1"> <tr> <th>CATEGORY</th> <th>A</th> <th>B</th> <th>C</th> <th>D</th> </tr> <tr> <td><b>C</b> CIRCLING</td> <td>940-1¼</td> <td>834 (900-1¼)</td> <td colspan="2">NA</td> </tr> </table>	CATEGORY	A	B	C	D	<b>C</b> CIRCLING	940-1¼	834 (900-1¼)	NA	
CATEGORY	A	B	C	D								
<b>C</b> CIRCLING	940-1¼	834 (900-1¼)	NA									

NE-3, 22 APR 2021 to 20 MAY 2021

NE-3, 22 APR 2021 to 20 MAY 2021