

WAAS CH 45544 W24A	APP CRS 241°	Rwy Idg TDZE Apt Elev	3471 790 790
--	------------------------	-----------------------------	---

RNAV (GPS) RWY 24

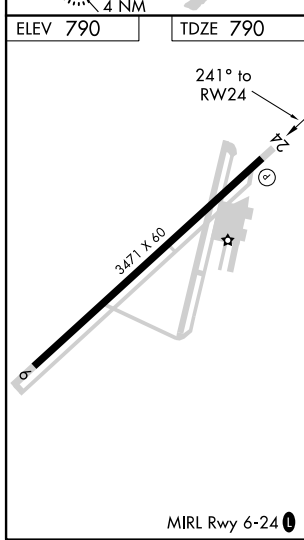
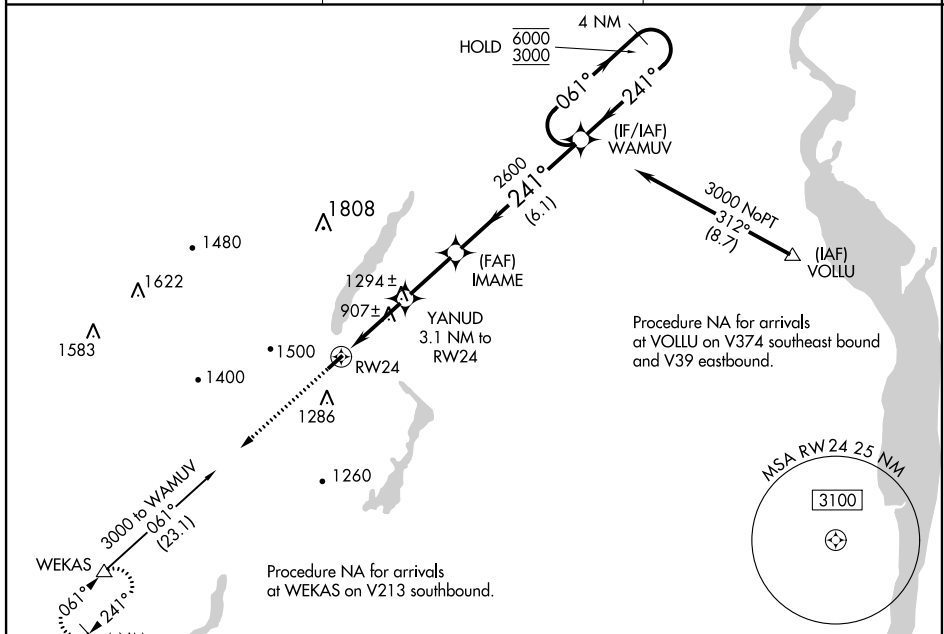
GREENWOOD LAKE (4N1)

RNP APCH.

▼ Obtain local altimeter setting on CTAF; when not received, use Sussex altimeter setting.
 ▲ NA Rwy 24 helicopter visibility reduction below 1 SM NA. Procedure NA at night.

MISSED APPROACH: Climb to 3000 direct WEKAS and hold.

NEW YORK APP CON 127.6 379.9	GCO 121.725	CTAF 122.9
--	-----------------------	----------------------



ELEV 790	TDZE 790	3000	WEKAS	Visual Segment - Obstacles.	4 NM
		↑	△		Holding Pattern
				IMAME	WAMUV
				YANUD 3.1 NM to RW24	061° → 6000
				RW24	← 241° 3000
				1820	
				2600	
				3.1 NM	2.5 NM
				6.1 NM	
CATEGORY	A	B	C	D	
LP MDA	1160-1	370 (400-1)		NA	
LNAV MDA	1560-1	1560-1¼		NA	
CIRCLING	771 (800-1)	771 (800-1¼)		NA	
	1600-1	1600-1¼		NA	
	810 (900-1)	810 (900-1¼)		NA	
SUSSEX ALTIMETER SETTING MINIMUMS					
LP MDA	1240-1	450 (500-1)		NA	
LNAV MDA	1640-1	1640-1¼		NA	
	851 (900-1)	851 (900-1¼)		NA	
CIRCLING	1700-1¼	910 (1000-1¼)		NA	

NE-2, 30 DEC 2021 to 27 JAN 2022

NE-2, 30 DEC 2021 to 27 JAN 2022

WAAS CH 93821 W06A	APP CRS 061°	Rwy Idg TDZE Apt Elev	3471 790 790
--	------------------------	-----------------------------	---

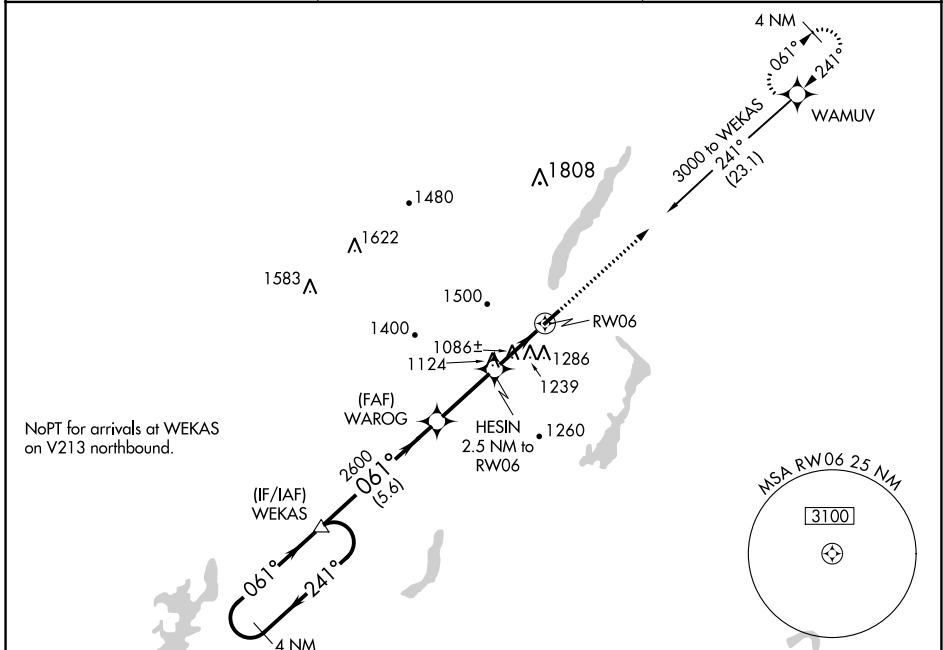
RNAV (GPS) RWY 6

GREENWOOD LAKE (4N1)

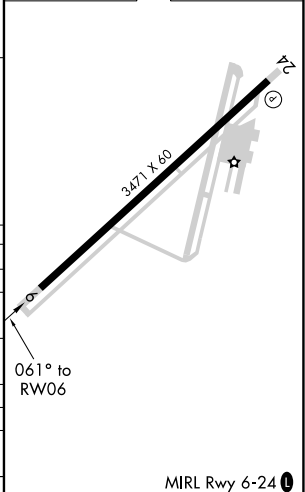
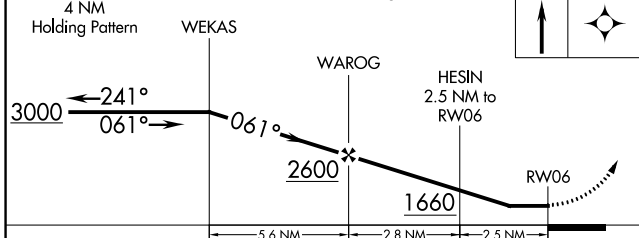
W DME/DME RNP-0.3 NA. Obtain local altimeter setting on CTAF; when not received, use Sussex altimeter setting. Helicopter visibility reduction below 1 SM NA.
NA Procedure NA at night.

MISSED APPROACH: Climb to 3000 direct WAMUV and hold.

NEW YORK APP CON 127.6 379.9	GCO 121.725	CTAF 122.9 0
--	-----------------------	------------------------



Visual Segment- Obstacles: 3000 WAMUV ELEV 790 TDZE 790



CATEGORY	A	B	C	D
LP MDA	1340-1	550 (600-1)		NA
LNAV MDA	1540-1 750 (800-1)	1540-1¼ 750 (800-1¼)		NA
CIRCLING	1600-1 810 (900-1)	1600-1¼ 810 (900-1¼)		NA
SUSSEX ALTIMETER SETTING MINIMUMS				
LP MDA	1420-1	630 (700-1)		NA
LNAV MDA	1580-1 790 (800-1)	1580-1¼ 790 (800-1¼)		NA
CIRCLING	1700-1¼	910 (1000-1¼)		NA

NE-2, 30 DEC 2021 to 27 JAN 2022

NE-2, 30 DEC 2021 to 27 JAN 2022