

WAAS CH <b>42525</b> <b>W24A</b>	APP CRS <b>241°</b>	Rwy Idg TDZE Apt Elev	<b>3471</b> <b>790</b> <b>790</b>
--	------------------------	-----------------------------	---

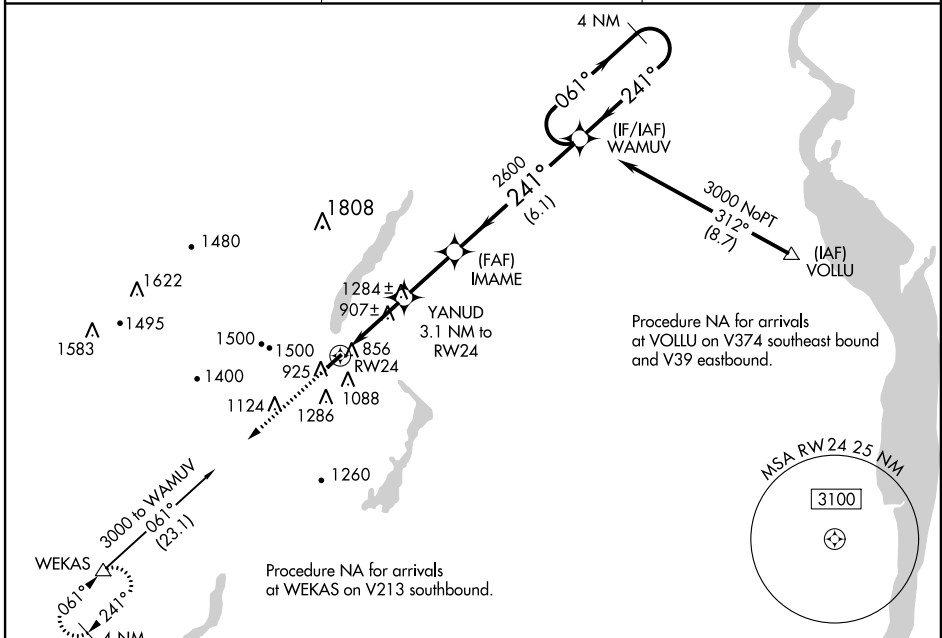
# RNAV (GPS) RWY 24

GREENWOOD LAKE (4N1)

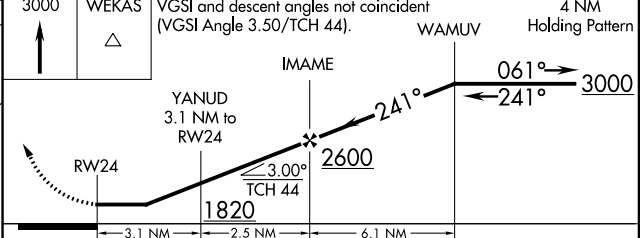
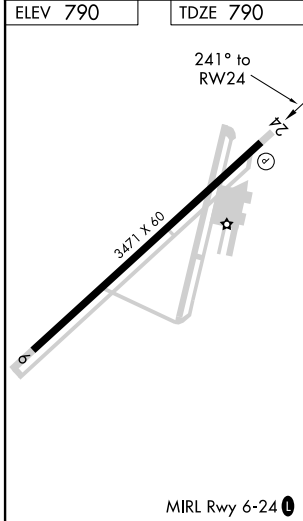
**NA** DME/DME RNP-0.3 NA. Obtain local altimeter setting on CTAF; when not received, use Sussex altimeter setting. Helicopter visibility reduction below 1 SM NA. Procedure NA at night.

MISSED APPROACH: Climb to 3000 direct WEKAS and hold.

NEW YORK APP CON <b>127.6 379.9</b>	GCO <b>121.725</b>	CTAF <b>122.9</b>
--	-----------------------	----------------------



ELEV 790 TDZE 790 3000 WEKAS VGSI and descent angles not coincident (VGSI Angle 3.50/TCH 44). WAMUV 4 NM Holding Pattern



CATEGORY	A	B	C	D
LP MDA	1160-1	370 (400-1)		NA
LNAV MDA	1540-1	1540-1¼		NA
CIRCLING	1600-1	1600-1¼		NA
	810 (900-1)	810 (900-1¼)		
SUSSEX ALTIMETER SETTING MINIMUMS				
LP MDA	1240-1	450 (500-1)		NA
LNAV MDA	1620-1	1620-1¼		NA
CIRCLING	830 (900-1)	830 (900-1¼)		NA
	1700-1¼	1700-1¼		
	910 (1000-1¼)	910 (1000-1¼)		NA

NE-2. 01 FEB 2018 to 01 MAR 2018

NE-2. 01 FEB 2018 to 01 MAR 2018

WAAS CH <b>93821</b> <b>W06A</b>	APP CRS <b>061°</b>	Rwy Idg TDZE Apt Elev	<b>3471</b> <b>790</b> <b>790</b>
--	------------------------	-----------------------------	---

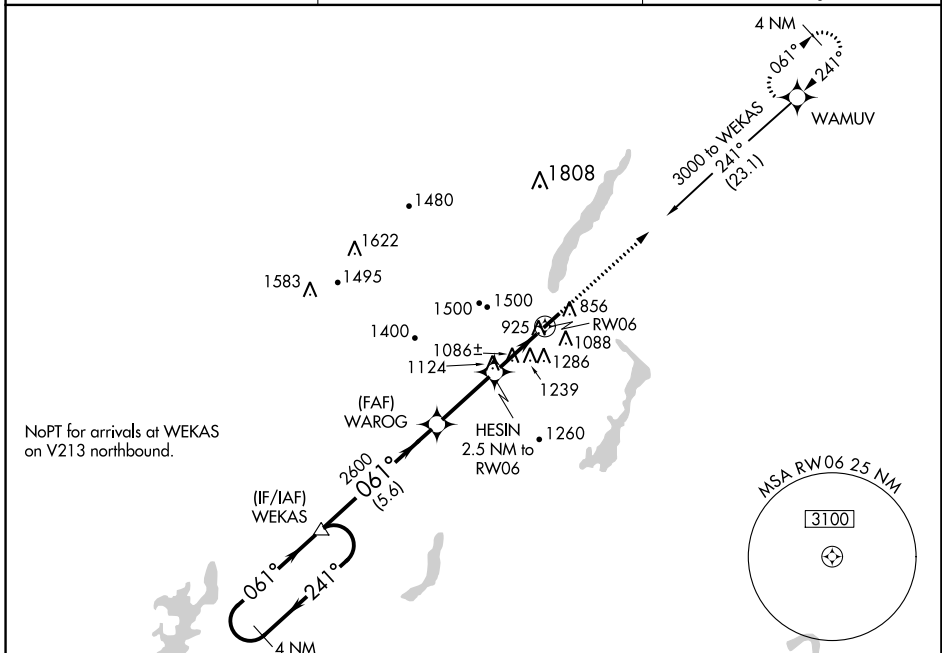
# RNAV (GPS) RWY 6

GREENWOOD LAKE (4N1)

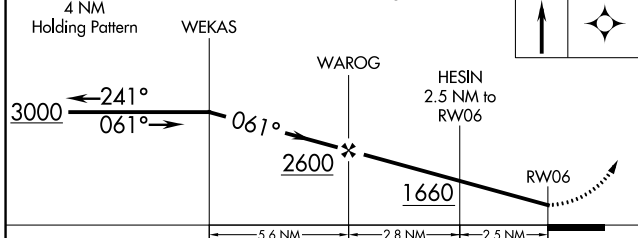
**W** DME/DME RNP-0.3 NA. Obtain local altimeter setting on CTAF; when not received, use Sussex altimeter setting. Helicopter visibility reduction below 1 SM NA.  
**NA** Procedure NA at night.

MISSED APPROACH: Climb to 3000 direct WAMUV and hold.

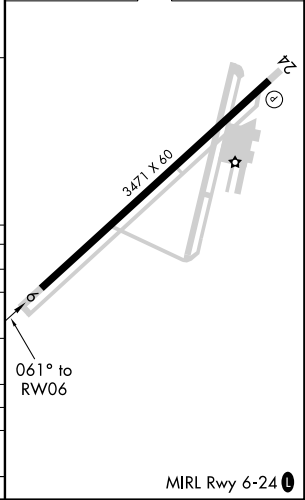
NEW YORK APP CON <b>127.6 379.9</b>	GCO <b>121.725</b>	CTAF <b>122.9 0</b>
--	-----------------------	------------------------



Visual segment- obstacles. 3000 WAMUV ELEV 790 TDZE 790



CATEGORY	A	B	C	D
LP MDA	1340-1	550 (600-1)		NA
RNAV MDA	1540-1 750 (800-1)	1540-1¼ 750 (800-1¼)		NA
CIRCLING	1600-1 810 (900-1)	1600-1¼ 810 (900-1¼)		NA
SUSSEX ALTIMETER SETTING MINIMUMS				
LP MDA	1420-1	630 (700-1)		NA
RNAV MDA	1580-1 790 (800-1)	1580-1¼ 790 (800-1¼)		NA
CIRCLING	1700-1¼	910 (1000-1¼)		NA



NE-2. 01 FEB 2018 to 01 MAR 2018

NE-2. 01 FEB 2018 to 01 MAR 2018

# TAKEOFF MINIMUMS, (OBSTACLE) DEPARTURE PROCEDURES, AND DIVERSE VECTOR AREA (RADAR VECTORS)

18032

INSTRUMENT APPROACH PROCEDURE CHARTS

## IFR TAKEOFF MINIMUMS AND (OBSTACLE) DEPARTURE PROCEDURES

### Civil Airports and Selected Military Airports

ALL USERS: Airports that have Departure Procedures (DPs) designed specifically to assist pilots in avoiding obstacles during the climb to the minimum enroute altitude, and/or airports that have civil IFR takeoff minimums other than standard, are listed below. Takeoff Minimums and Departure Procedures apply to all runways unless otherwise specified. An entry may also be listed that contains only Takeoff Obstacle Notes. Altitudes, unless otherwise indicated, are minimum altitudes in MSL.

DPs specifically designed for obstacle avoidance are referred to as Obstacle Departure Procedures (ODPs) and are textually described below, or published separately as a graphic procedure. If the ODP is published as a graphic procedure, its name will be listed below, and it can be found in either this volume (civil), or the applicable military volume, as appropriate. Users will recognize graphic obstacle DPs by the term "(OBSTACLE)" included in the procedure title; e.g., TETON TWO (OBSTACLE). If not specifically assigned an ODP, SID, or radar vector as part of an IFR clearance, an ODP may be required to be flown for obstacle clearance, even though not specifically stated in the IFR clearance. When doing so in this manner, ATC should be informed when the ODP being used contains a specified route to be flown, restrictions before turning, and/or altitude restrictions.

Some ODPs, which are established solely for obstacle avoidance, require a climb in visual conditions to cross the airport, a fix, or a NAVAID in a specified direction, at or above a specified altitude. These procedures are called Visual Climb Over Airport (VCOA). To ensure safe and efficient operations, the pilot must verbally request approval from ATC to fly the VCOA when requesting their IFR clearance.

At some locations where an ODP has been established, a diverse vector area (DVA) may be created to allow radar vectors to be used in lieu of an ODP. DVA information will state that headings will be as assigned by ATC and climb gradients, when applicable, will be published immediately following the specified departure procedure.

Graphic DPs designed by ATC to standardize traffic flows, ensure aircraft separation and enhance capacity are referred to as "Standard Instrument Departures (SIDs)". SIDs also provide obstacle clearance and are published under the appropriate airport section. ATC clearance must be received prior to flying a SID.

CIVIL USERS NOTE: Title 14 Code of Federal Regulations Part 91 prescribes standard takeoff rules and establishes takeoff minimums for certain operators as follows: (1) For aircraft, other than helicopters, having two engines or less – one statute mile visibility. (2) For aircraft having more than two engines – one-half statute mile visibility. (3) For helicopters – one-half statute mile visibility. These standard minima apply in the absence of any different minima listed below.

MILITARY USERS NOTE: Civil (nonstandard) takeoff minima are published below. For military takeoff minima, refer to appropriate service directives.

NAME	TAKEOFF MINIMUMS	NAME	TAKEOFF MINIMUMS
------	------------------	------	------------------

### AKRON, NY

#### AKRON (9G3)

#### TAKEOFF MINIMUMS AND (OBSTACLE)

#### DEPARTURE PROCEDURES

#### AMDT 1 14177 (FAA)

TAKEOFF OBSTACLE NOTES: **Rwy 7**, trees beginning 6' from DER, 62' left of centerline, up to 100' AGL/912' MSL. REIL 11' from DER, 76' left of centerline, 841' MSL. REIL 11' from DER, 78' right of centerline, 841' MSL. Vehicles on roadway, 14' from DER, left and right of centerline, up to 15' AGL/857' MSL. Transmission tower 187' from DER, 380' right of centerline, 50' AGL/870' MSL. Multiple poles beginning 190' from DER, 81' right of centerline, up to 33' AGL/866' MSL. Fence 195' from DER, 243' right of centerline, 10' AGL/845' MSL. Tree 399' from DER, 188' right of centerline, 28' AGL/850' MSL. Chimney 555' from DER, 387' right of centerline, 34' AGL/870' MSL. Trees beginning 839' from DER, 16' left of centerline, up to 100' AGL/910 MSL. Tree 874' from DER, 300' right of centerline, 33' AGL/862' MSL. Trees beginning 1303' from DER, 7' right of centerline, 100' AGL/940' MSL. Transmission line beginning 1314' from DER, 617' right of centerline, up to 52' AGL/895' MSL. **Rwy 25**, sign 7' from DER, 268' right of centerline, 4' AGL/834' MSL. Fence 14' from DER, 319' right of centerline, 7' AGL/830' MSL. Trees beginning 21' from DER, 5' left of centerline, up to 76' AGL/876' MSL. Trees beginning 368' from DER, 8' right of centerline, up to 73' AGL/884' MSL. Fence 196' from DER, 159' left of centerline, 11' AGL/836' MSL.

01 FEB 2018 to 01 MAR 2018

01 FEB 2018 to 01 MAR 2018

# TAKEOFF MINIMUMS, (OBSTACLE) DEPARTURE PROCEDURES, AND DIVERSE VECTOR AREA (RADAR VECTORS)

18032

NE-2

# TAKEOFF MINIMUMS, (OBSTACLE) DEPARTURE PROCEDURES, AND DIVERSE VECTOR AREA (RADAR VECTORS)

18032

## ALBANY, NY

### ALBANY INTL (ALB)

#### TAKEOFF MINIMUMS AND (OBSTACLE) DEPARTURE PROCEDURES

AMDT 13 15344 (FAA)

TAKEOFF MINIMUMS: **Rwy 10**, 300-1½ or std. w/min. climb of 365' per NM to 600. **Rwy 28**, 300-1¾ or std. w/min. climb of 458' per NM to 700.

DEPARTURE PROCEDURE: **Rwy 10**, climb heading 110° to 2000 before turning north. **Rwy 19**, climb heading 191° to 1100 before turning west. **Rwy 28**, climb heading 281° to 2000 before proceeding on course.

TAKEOFF OBSTACLE NOTES: **Rwy 1**, trees beginning 1168' from DER, 640' right of centerline, up to 113' AGL/363' MSL. Trees beginning 2109' from DER, 581' left of centerline, up to 102' AGL/362' MSL. **Rwy 10**, tree 117' from DER, 420' right of centerline, 29' AGL/300' MSL. Vehicles on road 304' from DER, 499' left of centerline, up to 15' AGL/290' MSL. Trees beginning 429' from DER, 341' right of centerline, up to 97' AGL/366' MSL. Tree 460' from DER, 616' left of centerline, 92' AGL/352' MSL. Vehicles on road 1461' from DER, 689' left of centerline, up to 15' AGL/315' MSL. Trees beginning 1534' from DER, 463' left of centerline, up to 105' AGL/403' MSL. Trees beginning 2595' from DER, 81' left of centerline, up to 87' AGL/401' MSL. Trees beginning 2738' from DER, 961' right of centerline, up to 99' AGL/398' MSL. Trees beginning 4602' from DER, 1167' right of centerline, up to 93' AGL/490' MSL. Trees beginning 4713' from DER, left and right of centerline, up to 75' AGL/437' MSL. Tree 5136' from DER, 576' right of centerline, 95' AGL/510' MSL. Tree 1.1 NM from DER, 1578' right of centerline, 87' AGL/453' MSL. **Rwy 19**, trees beginning 2510' from DER, 984' right of centerline, up to 105' AGL/394' MSL. **Rwy 28**, tree 149' from DER, 355' left of centerline, 34' AGL/293' MSL. Trees beginning 555' from DER, 459' right of centerline, up to 36' AGL/311' MSL. Terrain 1029' from DER, 595' left of centerline, 319' MSL. Trees beginning 1275' from DER, 292' left of centerline up to 97' AGL/388' MSL. Trees beginning 1397' from DER, 531' right of centerline, up to 104' AGL/408' MSL. Trees beginning 2065' from DER, 696' left of centerline, up to 100' AGL/401' MSL. Trees beginning 2172' from DER, 706' right of centerline, up to 98' AGL/425' MSL. Trees beginning 2608' from DER, 217' right of centerline, up to 102' AGL/430' MSL. Trees beginning 2786' from DER, 78' left of centerline, up to 97' AGL/440' MSL. Trees beginning 3089' from DER, 2' right of centerline, up to 64' AGL/397' MSL. Trees beginning 4053' from DER, 1089' right of centerline, up to 77' AGL/452' MSL. Tree 4192' from DER, 312' left of centerline, 92' AGL/461' MSL. Trees beginning 5258' from DER, left and right of centerline, up to 102' AGL/525' MSL. Trees beginning 1.1 NM from DER, 1416' right of centerline, up to 90' AGL/534' MSL. Trees beginning 1.2 NM from DER, 611' left of centerline, up to 111' AGL/473' MSL.

## ALBION, NY

### PINE HILL (9G6)

#### TAKEOFF MINIMUMS AND (OBSTACLE) DEPARTURE PROCEDURES

TAKEOFF MINIMUMS: **Rwy 10**, 300-1.

DEPARTURE PROCEDURE: **Rwy 10**, climb runway heading to 1000 before proceeding on course.

## ANDOVER, NJ

### AEROFLEX-ANDOVER (12N)

#### TAKEOFF MINIMUMS AND (OBSTACLE) DEPARTURE PROCEDURES

AMDT 1 03135 (FAA)

TAKEOFF MINIMUMS: **Rwy 3**, 500-2 or std. with a min. climb of 310' per NM to 900. **Rwy 21**, 600-2 or std. with a min. climb of 256' per NM to 1000.

DEPARTURE PROCEDURE: **Rwy 3**, climb runway heading to 1200 before proceeding on course. **Rwy 21**, climb runway heading to 1400 before proceeding on course.

TAKEOFF OBSTACLE NOTES: **Rwy 3**, trees 4800' from DER, 1050' left of centerline, 100' AGL/803' MSL. **Rwy 21**, trees 715' from DER, 164' right of centerline, 84' AGL/667' MSL.

## ATLANTIC CITY, NJ

### ATLANTIC CITY INTL (ACY)

#### TAKEOFF MINIMUMS AND (OBSTACLE) DEPARTURE PROCEDURES

ORIG-A 17285 (FAA)

TAKEOFF OBSTACLE NOTES: **Rwy 4**, sign 36' from DER, 303' right of centerline, 4' AGL/69' MSL. Tree 1942' from DER, 803' left of centerline, 127' MSL. Trees beginning 1967' from DER, 703' left of centerline, up to 130' MSL. Tree 2014' from DER, 638' left of centerline, 132' MSL. Trees beginning 2044' from DER, 440' left of centerline, up to 135' MSL. Tree 2583' from DER, 648' right of centerline, 132' MSL. **Rwy 13**, NAVAID 42' from DER, 149' right of centerline, 2' AGL/65' MSL. Trees beginning 1161' from DER, 710' right of centerline, up to 104' MSL. Trees beginning 1575' from DER, 814' right of centerline, up to 117' MSL. Tree 1788' from DER, 922' right of centerline, 118' MSL. **Rwy 22**, terrain and NAVAID beginning 5' from DER, 119' right of centerline, up to 63' MSL. Bush 86' from DER, 475' right of centerline, 64' MSL. Poles beginning 219' from DER, 446' left of centerline, up to 32' AGL/88' MSL. Transmission tower and pole beginning 539' from DER, 618' left of centerline, up to 90' MSL. Tree 848' from DER, 714' right of centerline, 84' MSL. Trees beginning 949' from DER, 550' right of centerline, up to 96' MSL. Tree 1186' from DER, 800' right of centerline, 98' MSL. Trees beginning 1402' from DER, 731' left of centerline, up to 116' MSL. Tree 1412' from DER, 853' right of centerline, 104' MSL. Trees beginning 2124' from DER, 271' left of centerline, up to 118' MSL. Tree 2258' from DER, 464' left of centerline, 126' MSL. **Rwy 31**, light support structure 10' from DER, 6' left of centerline, 2' AGL/76' MSL. Light support structure 11' from DER, 4' right of centerline, 2' AGL/77' MSL. Trees beginning 2405' from DER, 1114' left of centerline, up to 144' MSL.

01 FEB 2018 to 01 MAR 2018

01 FEB 2018 to 01 MAR 2018

# TAKEOFF MINIMUMS, (OBSTACLE) DEPARTURE PROCEDURES, AND DIVERSE VECTOR AREA (RADAR VECTORS)

18032

NE-2

**TAKEOFF MINIMUMS, (OBSTACLE) DEPARTURE PROCEDURES, AND  
DIVERSE VECTOR AREA (RADAR VECTORS)**

18032

**BATAVIA, NY**

GENESEE COUNTY AIRPORT (GVQ)  
TAKEOFF MINIMUMS AND (OBSTACLE)  
DEPARTURE PROCEDURES  
ORIG 07214 (FAA)

TAKEOFF OBSTACLE NOTES: **Rwy 28**, terrain 15' from DER, 72' left of centerline, 919' MSL. Terrain 19' from DER, 231' right of centerline, 916' MSL. Multiple trees beginning 608' from DER, 584' left of centerline, up to 100' AGL/1009' MSL. Tower 1789' from DER, 704' left of centerline, 100' AGL/1005' MSL.

**BELMAR-FARMINGDALE, NJ  
MONMOUTH EXECUTIVE (BLM)**

TAKEOFF MINIMUMS AND (OBSTACLE)  
DEPARTURE PROCEDURES  
AMDT 2 12152 (FAA)

DEPARTURE PROCEDURE: **Rwy 32**, climb heading 325° to 1000 before turning right.

TAKEOFF OBSTACLE NOTES: **Rwy 3**, trees beginning 29' from DER, 195' right of centerline, up to 60' AGL/209' MSL. Trees beginning 165' from DER, 99' left of centerline, up to 60' AGL/214' MSL. Vehicles on road, 309' from DER, left and right of centerline, up to 15' AGL/214' MSL. **Rwy 14**, pole, 29' from DER, 351' left of centerline, 34' AGL/156' MSL. Trees beginning 38' from DER, left and right of centerline, up to 56' AGL/202' MSL. **Rwy 21**, vehicles on roadway, 17' from DER, left and right of centerline, up to 15' AGL/169' MSL. Trees beginning 42' from DER, 260' right of centerline, up to 60' AGL/214' MSL. Trees beginning 99' from DER, left and right of centerline, up to 60' AGL/214' MSL. **Rwy 32**, vehicles on roadway, 24' from DER, 323' right of centerline, up to 15' AGL/121' MSL. Vehicles on roadway, 53' from DER, 367' right of centerline, up to 15' AGL/122' MSL. Vehicles on roadway, 81' from DER, 210' right of centerline, up to 15' AGL/123' MSL. Vehicles on roadway, 100' from DER, 109' right of centerline, up to 15' AGL/123' MSL. Trees beginning 230' from DER, 190' left of centerline, up to 62' AGL/164' MSL. Trees beginning 257' from DER, 203' right of centerline, up to 90' AGL/172' MSL. Trees beginning 1918' from DER, 51' right of centerline, up to 97' AGL/174' MSL.

**BERLIN, NJ**

CAMDEN COUNTY (19N)  
TAKEOFF MINIMUMS AND (OBSTACLE)  
DEPARTURE PROCEDURES  
AMDT 2 14317 (FAA)

TAKEOFF MINIMUMS: **Rwy 5**, 600-1¼ or std. with a min. climb of 442' per NM to 700.

DEPARTURE PROCEDURE: **Rwy 5**, climb heading 050° to 600 before turning on course. **Rwy 23**, climb heading 230° to 600 before turning on course.

TAKEOFF OBSTACLE NOTES: **Rwy 5**, poles beginning at 1' from DER, 199' left and right of centerline, up to 35' AGL/179' MSL. Vehicle on road beginning 76' from DER, 7' left and right of centerline, up to 15' AGL/158' MSL. Trees beginning 73' from DER, 204' left and right of centerline, up to 120' AGL/271' MSL. Sign 23' from DER, 97' right of centerline, up to 6' AGL/147' MSL. Towers beginning at 1.2 NM from DER, 246' left and right of centerline, up to 310' AGL/500' MSL. **Rwy 23**, poles beginning at 183' from DER, 37' left and right of centerline, up to 36' AGL/186' MSL. Railroad beginning at 103' from DER, 25' left and of centerline, up to 17' AGL/167' MSL. Trees beginning 4' from DER, 1' left and right of centerline, up to 79' AGL/234' MSL.

**BINGHAMTON, NY**

GREATER BINGHAMTON/EDWIN A. LINK  
FIELD (BGM)

TAKEOFF MINIMUMS AND (OBSTACLE)  
DEPARTURE PROCEDURES  
ORIG 08157 (FAA)

TAKEOFF OBSTACLE NOTES: **Rwy 10**, trees beginning 143' from DER, 259' left of centerline, up to 29' AGL/1579' MSL. **Rwy 16**, trees beginning 162' from DER, 325' left of centerline, up to 100' AGL/1669' MSL. **Rwy 28**, trees beginning 157' from DER, 406' left of centerline, up to 52' AGL/1602' MSL. **Rwy 34**, antenna 216' from DER, 223' right of centerline, 93' AGL/1643' MSL.

**BLAIRSTOWN, NJ**

BLAIRSTOWN (1N7)

TAKEOFF MINIMUMS AND (OBSTACLE)  
DEPARTURE PROCEDURES  
AMDT 2 11069 (FAA)

TAKEOFF MINIMUMS: **Rwy 7**, 500-3. **Rwy 25**, 600-3.

DEPARTURE PROCEDURE: **Rwy 7**, climb heading 074° to 1600 before proceeding on course. **Rwy 25**, climb heading 254° to 2100 before proceeding on course.

TAKEOFF OBSTACLE NOTES: **Rwy 7**, trees beginning at DER, 276' right of centerline, up to 100' AGL/599' MSL. Trees beginning at DER, 145' left of centerline, up to 100' AGL/599' MSL. **Rwy 25**, trees beginning at DER, 178' right of centerline, up to 100' AGL/559' MSL. Trees beginning at DER, 220' left of centerline, up to 100' AGL/759' MSL.

01 FEB 2018 to 01 MAR 2018

01 FEB 2018 to 01 MAR 2018

**TAKEOFF MINIMUMS, (OBSTACLE) DEPARTURE PROCEDURES, AND  
DIVERSE VECTOR AREA (RADAR VECTORS)**

18032

NE-2

# TAKEOFF MINIMUMS, (OBSTACLE) DEPARTURE PROCEDURES, AND DIVERSE VECTOR AREA (RADAR VECTORS)

18032

## BROCKPORT, NY

LEDGEDALE AIRPARK (7G0)  
TAKEOFF MINIMUMS AND (OBSTACLE)  
DEPARTURE PROCEDURES  
ORIG 09015 (FAA)  
TAKEOFF OBSTACLE NOTES: **Rwy 10**, trees beginning 882' from DER, 568' left of centerline up to 100' AGL/764' MSL. **Rwy 28**, tree beginning 1820' from DER, 769' right of centerline up to 100' AGL/764' MSL. Trees beginning 3049' from DER, 1253' left of centerline up to 100' AGL/759' MSL.

## BUFFALO, NY

BUFFALO AIRFIELD (9G0)  
TAKEOFF MINIMUMS AND (OBSTACLE)  
DEPARTURE PROCEDURES  
AMDT 1 08325 (FAA)  
TAKEOFF OBSTACLE NOTES: **Rwy 6**, trees beginning 2296' from DER, 68' left of centerline, up to 100' AGL/770' MSL. Tree 4038' from DER, 1425' right of centerline, 100' AGL/779' MSL. Trees beginning 3080' from DER, 219' right of centerline, up to 100' AGL/769' MSL. **Rwy 24**, trees beginning 91' from DER, 208' right of centerline, up to 100' AGL/780' MSL. Trees beginning 868' from DER, 112' left of centerline, up to 100' AGL/750' MSL.

## BUFFALO NIAGARA INTL (BUF)

TAKEOFF MINIMUMS AND (OBSTACLE)  
DEPARTURE PROCEDURES  
AMDT 6 12208 (FAA)  
TAKEOFF OBSTACLE NOTES: **Rwy 5**, trees beginning 649' from DER, 347' left of centerline, up to 100' AGL/756' MSL. Trees beginning 1449' from DER, 685' right of centerline, up to 100' AGL/787' MSL. **Rwy 14**, trees, poles, signs, and fence 2' from DER, 395' right of centerline, up to 100' AGL/759' MSL. Trees, poles, and building beginning 329' from DER, 17' left of centerline, up to 100' AGL/790' MSL. **Rwy 23**, trees, poles, building, and signs beginning 393' from DER, 108' right of centerline, up to 100' AGL/741' MSL. Trees, poles, building, and signs beginning 14' from DER, 216' left of centerline, up to 100' AGL/732' MSL. **Rwy 32**, trees and poles beginning 632' from DER, 10' right of centerline, up to 100' AGL/753' MSL. Trees and vegetation beginning 16' from DER, 27' left of centerline, up to 100' AGL/756' MSL.

## CALDWELL, NJ

ESSEX COUNTY (CDW)  
TAKEOFF MINIMUMS AND (OBSTACLE)  
DEPARTURE PROCEDURES  
AMDT 2 11125 (FAA)  
TAKEOFF MINIMUMS: **Rwy 10**, NA - Obstacles. **Rwy 22**, 300-1 or std. w/min. climb of 613' per NM to 400.  
DEPARTURE PROCEDURE: **Rwy 4**, climb heading 043° to 1000 before turning right. **Rwy 22**, climb heading 223° to 900 before turning left.  
TAKEOFF OBSTACLE NOTES: **Rwy 4**, building, bushes and trees beginning 150' from DER, 157' left of centerline, up to 72' AGL/271' MSL. Trees and bushes beginning 170' from DER, 96' right of centerline, up to 54' AGL/253' MSL. **Rwy 22**, building and trees beginning 24' from DER, 9' left of centerline, up to 100' AGL/343' MSL. Trees, poles and building beginning 201' from DER, 113' right of centerline, up to 100' AGL/287' MSL. Localizer 364' from DER, on centerline, 183' MSL. **Rwy 28**, trees and light on building beginning 300' from DER, 14' right of centerline, up to 100' AGL/255' MSL. Trees, poles and buildings beginning 113' from DER, 15' left of centerline, up to 100' AGL/237' MSL.

## CANANDAIGUA, NY

CANANDAIGUA (JUA)  
TAKEOFF MINIMUMS AND (OBSTACLE)  
DEPARTURE PROCEDURES  
AMDT 1 14317 (FAA)  
TAKEOFF OBSTACLE NOTES: **Rwy 13**, ground 28' from DER, 301' left of centerline, 818' MSL. Trees beginning 76' from DER, 444' right of centerline, up to 100' AGL/901' MSL. Trees beginning 1147' from DER, 164' left of centerline, up to 100' AGL/855' MSL. **Rwy 31**, ground 6' from DER, 489' left of centerline, 797' MSL. Pole 197' from DER, 390' right of centerline, 39' AGL/823' MSL. Trees beginning 850' from DER, 146' left of centerline, up to 100' AGL/873' MSL.

## CORTLAND, NY

CORTLAND COUNTY-CHASE FIELD (N03)  
TAKEOFF MINIMUMS AND (OBSTACLE)  
DEPARTURE PROCEDURES  
AMDT 3 12152 (FAA)  
TAKEOFF MINIMUMS: **Rwy 6**, std. w/min. climb of 328' per NM to 2200, or 1500-3 for climb in visual conditions. **Rwy 24**, 500-2 or std. w/min. climb of 435' per NM to 1800.  
DEPARTURE PROCEDURE: **Rwy 6**, climb heading 059° to 2200 before turning; or for climb in visual conditions: cross Cortland County-Chase Field Airport at or above 2500' MSL before proceeding on course. **Rwy 24**, climb heading 239° to 2200 before turning.  
TAKEOFF OBSTACLE NOTES: **Rwy 6**, vehicles on roadway, 755' from DER, across centerline, 15' AGL/1234' MSL. Trees beginning 838' from DER, 415' right of centerline, up to 100' AGL/1299' MSL. Trees beginning 2114' from DER, 326' left of centerline, up to 100' AGL/1339' MSL. Tower 2.5 NM from DER, 595' right of centerline, 192' AGL/1624' MSL. **Rwy 24**, trees beginning 749' from DER, 94' right of centerline, up to 100' AGL/1439' MSL. Vehicles on roadway, 1364' from DER, across centerline, 17' AGL/1236' MSL. Trees beginning 1.01 NM from DER, 1872' right of centerline, up to 100' AGL/1559' MSL.

01 FEB 2018 to 01 MAR 2018

01 FEB 2018 to 01 MAR 2018

# TAKEOFF MINIMUMS, (OBSTACLE) DEPARTURE PROCEDURES, AND DIVERSE VECTOR AREA (RADAR VECTORS)

18032

NE-2

# TAKEOFF MINIMUMS, (OBSTACLE) DEPARTURE PROCEDURES, AND DIVERSE VECTOR AREA (RADAR VECTORS)

18032

## CROSS KEYS, NJ

### CROSS KEYS (17N)

TAKEOFF MINIMUMS AND (OBSTACLE)  
DEPARTURE PROCEDURES  
AMDT 1 09351 (FAA)

TAKEOFF OBSTACLE NOTES: **Rwy 9**, trees beginning 81' from DER, 76' right of centerline, up to 100' AGL/289' MSL. Trees beginning 1914' from DER, 834' left of centerline, up to 100' AGL/279' MSL. Pole 4369' from DER, 643' left of centerline, 147' AGL/303' MSL. **Rwy 27**, trees beginning 50' from DER, 20' right of centerline, up to 100' AGL/259' MSL. Tree 2099' from DER, 893' left of centerline, 100 AGL/249' MSL.

## DANSVILLE, NY

### DANSVILLE MUNI (DSV)

TAKEOFF MINIMUMS AND (OBSTACLE)  
DEPARTURE PROCEDURES  
AMDT 2A 17173 (FAA)

TAKEOFF MINIMUMS: **Rwy 14**, std. w/ min. climb of 482' per NM to 3000, or 2000-3 for climb in visual conditions. **Rwy 32**, std. w/ min. climb of 399' per NM to 2400, or 700-2½ w/ min. climb of 321' per NM to 2400, or 2000-3 for climb in visual conditions.  
DEPARTURE PROCEDURE: **Rwy 14**, climb heading 137° to 3000 or for climb in visual conditions cross Dansville Muni airport at or above 2500 MSL before proceeding on course. **Rwy 32**, climb heading 317° to 2400 or for climb in visual conditions cross Dansville Muni airport at or above 2500 MSL before proceeding on course.

TAKEOFF OBSTACLE NOTES: **Rwy 14**, vehicle on roadway, at DER, 377' left of centerline, 15' AGL/675' MSL. Trees beginning 7725' from DER, 635' left of centerline, up to 50' AGL/1409' MSL. Vehicle on roadway, 174' from DER, 536' right of centerline, 15' AGL/675' MSL. Trees beginning 1.8 NM from DER, 94' right of centerline, 50' AGL/1349' MSL. **Rwy 32**, vehicle on roadway, 41' from DER, 470' left of centerline, 15' AGL/651' MSL. Trees beginning 8840' from DER, 1396' left of centerline, up to 50' AGL/1249' MSL.

## DUNKIRK, NY

### CHAUTAUQUA COUNTY/ DUNKIRK (DKK)

TAKEOFF MINIMUMS AND (OBSTACLE)  
DEPARTURE PROCEDURES  
AMDT 3 18032 (FAA)

TAKEOFF MINIMUMS: **Rwy 6**, std. or 2300-3 for climb in visual conditions. **Rwy 15**, std. w/ min. climb of 455' per NM to 2500 or 2300-3 for climb in visual conditions. **Rwy 24**, std. w/ min. climb of 220' per NM to 2500 or 2300-3 for climb in visual conditions. **Rwy 33**, std. w/ min. climb of 250' per NM to 2000 or 2300-3 for climb in visual conditions.

DEPARTURE PROCEDURE: **Rwy 6**, climb heading 059° to 1900 before turning. **Rwy 15**, climb heading 149° to 3400 before turning. **Rwy 24**, climb heading 239° to 2600 before turning. **Rwy 33**, climb heading 329° to 1900 before turning.

VCOA: **Rwys 6, 15, 24, 33**, obtain ATC approval for VCOA when requesting IFR clearance. Climb in visual conditions to cross Chautauqua County / Dunkirk airport at or above 2800 before proceeding on course.

TAKEOFF OBSTACLE NOTES: **Rwy 6**, NAVAID 11' from DER, 91' left of centerline, 3' AGL/663' MSL. Lighting 11' from DER, 30' right of centerline, 1' AGL/662' MSL. Tree 657' from DER, 104' left of centerline, 696' MSL. Trees beginning 739' from DER, 203' right of centerline, up to 704' MSL. Trees beginning 756' from DER, 56' left of centerline, up to 730' MSL. Tree 849' from DER, 298' right of centerline, 711' MSL. Trees beginning 866' from DER, 228' right of centerline, up to 717' MSL. Trees and poles beginning 964' from DER, 13' left of centerline, up to 736' MSL. Trees beginning 1150' from DER, 48' right of centerline, up to 721' MSL. Trees and poles beginning 1303' from DER, 27' right of centerline, up to 728' MSL. Trees beginning 2376' from DER, 383' right of centerline, up to 741' MSL. Trees and pole beginning 2424' from DER, 39' right of centerline, up to 761' MSL. Tree 2736' from DER, 44' left of centerline, 740' MSL. Trees beginning 2807' from DER, 66' left of centerline, up to 743' MSL. Tree 3298' from DER, 990' left of centerline, 746' MSL. Tree 3418' from DER, 1240' left of centerline, 749' MSL. **Rwy 15**, electrical system 2' from DER, 156' right of centerline, 2' AGL/694' MSL. Tree 5' from DER, 32' left of centerline, 1061' MSL. Tree 7' from DER, 673' right of centerline, 1061' MSL. Electrical system 9' from DER, 29' left of centerline, 3' AGL/695' MSL. Tree 33' from DER, 949' right of centerline, 1062' MSL. Tree and vegetation beginning 102' from DER, 423' left of centerline, up to 1058' MSL. Tree 126' from DER, 2852' right of centerline, 1079' MSL. Trees beginning 168' from DER, 1267' right of centerline, up to 1108' MSL. Trees and fence beginning 349' from DER, 260' right of centerline, up to 1118' MSL. Trees beginning 362' from DER, 173' left of centerline, up to 1071' MSL. Trees beginning 514' from DER, 594' right of centerline, up to 773' MSL. Trees beginning 537' from DER, 3296' right of centerline, up to 1122' MSL. Tree 566' from DER, 661' left of centerline, 1090' MSL. Trees beginning 620' from DER, 2278' right of centerline, up to 1151' MSL. Tree 667' from DER, 1055' left of centerline, 1091' MSL. Trees beginning 718' from DER, 259' right of centerline, up to 1155' MSL. Trees beginning 740' from DER, 130' left of centerline, up to 1098' MSL. Trees beginning 860' from DER, 251' left of centerline, up to 1105' MSL. Tree 893' from DER, 250' left of centerline, 744' MSL. Tree 948' from DER, 608' left of centerline, 765' MSL. Tree 951' from DER, 1814' left of centerline, 1101' MSL. Tree 1057' from DER, 190' left of centerline, 731' MSL. Trees beginning 1183' from DER, 1274' left of centerline, up to 1131' MSL.

01 FEB 2018 to 01 MAR 2018

01 FEB 2018 to 01 MAR 2018

# TAKEOFF MINIMUMS, (OBSTACLE) DEPARTURE PROCEDURES, AND DIVERSE VECTOR AREA (RADAR VECTORS)

18032

NE-2

**TAKEOFF MINIMUMS, (OBSTACLE) DEPARTURE PROCEDURES, AND  
DIVERSE VECTOR AREA (RADAR VECTORS)**

18032

**DUNKIRK, NY (CON'T)  
CHAUTAUQUA COUNTY/ DUNKIRK (DKK)  
(CON'T)**

**Rwy 15 (CON'T)**, tree 1227' from DER, 111' right of centerline, 748' MSL. Tree 1237' from DER, 3974' left of centerline, 1140' MSL. Tree 1259' from DER, 1505' right of centerline, 1144' MSL. Tree 1263' from DER, 9' right of centerline, 1158' MSL. Tree 1277' from DER, 520' left of centerline, 1152' MSL. Tree 1279' from DER, 156' left of centerline, 766' MSL. Trees beginning 1286' from DER, 681' right of centerline, up to 1159' MSL. Trees beginning 1293' from DER, 46' left of centerline, up to 1145' MSL. Tree, pole, and transmission line beginning 1324' from DER, 82' right of centerline, up to 745' MSL. Tree 1359' from DER, 3174' right of centerline, 1143' MSL. Tree 1407' from DER, 3804' right of centerline, 1149' MSL. Tree 1453' from DER, 109' right of centerline, 749' MSL. Tree 1462' from DER, 282' left of centerline, 746' MSL. Vegetation 1465' from DER, 4041' left of centerline, 100' AGL/1111' MSL. Trees beginning 1470' from DER, 105' right of centerline, up to 757' MSL. Tree 1509' from DER, 173' left of centerline, 739' MSL. Tree 1539' from DER, 2232' left of centerline, 1124' MSL. Trees beginning 1550' from DER, 262' left of centerline, up to 1160' MSL. Tree 1599' from DER, 2403' right of centerline, 1167' MSL. Trees beginning 1637' from DER, 165' right of centerline, up to 1168' MSL. Vegetation and trees beginning 1666' from DER, 91' right of centerline, up to 100' AGL/1193' MSL. Tree 1701' from DER, 429' left of centerline, 1168' MSL. Tree 1759' from DER, 271' right of centerline, 762' MSL. Trees beginning 1768' from DER, 663' left of centerline, up to 1171' MSL. Trees beginning 1770' from DER, 41' right of centerline, up to 1162' MSL. Tree 1805' from DER, 662' left of centerline, 769' MSL. Trees beginning 1806' from DER, 2070' right of centerline, up to 1179' MSL. Tree 1826' from DER, 742' right of centerline, 767' MSL. Vegetation 1832' from DER, 4014' left of centerline, 100' AGL/1134' MSL. Tree 1838' from DER, 2116' left of centerline, 1156' MSL. Trees beginning 1853' from DER, 153' right of centerline, up to 1174' MSL. Tree, vegetation beginning 1867' from DER, 504' left of centerline, up to 1173' MSL. Trees beginning 1894' from DER, 2679' right of centerline, up to 1179' MSL. Tree 1952' from DER, 2435' right of centerline, 1184' MSL. Vegetation and tree beginning 2041' from DER, 734' right of centerline, up to 100' AGL/1193' MSL. Trees beginning 2135' from DER, 308' left of centerline, up to 1207' MSL. Trees beginning 2221' from DER, 2217' right of centerline, up to 1199' MSL. Tree 2273' from DER, 351' left of centerline, 779' MSL. Trees and vegetation beginning 2284' from DER, 1172' left of centerline, up to 1210' MSL. Vegetation and trees beginning 2310' from DER, 909' right of centerline, up to 100' AGL/1219' MSL. Tree 2386' from DER, 307' left of centerline, 792' MSL. Tree 2391' from DER, 967' left of centerline, 804' MSL. Vegetation beginning 2416' from DER, 4010' right of centerline, up to 100' AGL/1223' MSL. Tree 2419' from DER, 2817' left of centerline, 1153' MSL. Trees beginning 2467' from DER, 134' left of centerline, up to 795' MSL. Vegetation 2549' from DER, 4328' left of centerline, 100' AGL/1150' MSL. Tree 2550' from DER, 326' left of centerline, 783' MSL. Tree 2553' from DER, 528' left of centerline, 800' MSL. Trees beginning 2557' from DER, 5' left of centerline, up to 1227' MSL. Trees beginning 2565' from DER, 1135' right of centerline, up to 1223' MSL. Trees beginning 2632' from DER, 2545' right of centerline, up to 1230' MSL.

**DUNKIRK, NY (CON'T)  
CHAUTAUQUA COUNTY/ DUNKIRK (DKK)  
(CON'T)**

**Rwy 15 (CON'T)**, tree 2633' from DER, 266' left of centerline, 801' MSL. Trees beginning 2643' from DER, 84' left of centerline, up to 809' MSL. Vegetation and trees beginning 2682' from DER, 283' right of centerline, up to 100' AGL/1252' MSL. Tree 2733' from DER, 1936' left of centerline, 1204' MSL. Tree 2737' from DER, 382' left of centerline, 795' MSL. Vegetation 2740' from DER, 4130' left of centerline, 100' AGL/1141' MSL. Tree 2742' from DER, 2' left of centerline, 792' MSL. Trees beginning 2778' from DER, 122' left of centerline, up to 803' MSL. Tree 2799' from DER, 1824' left of centerline, 1202' MSL. Trees beginning 2802' from DER, 677' left of centerline, up to 1235' MSL. Trees beginning 2875' from DER, 36' left of centerline, up to 805' MSL. Vegetation 2912' from DER, 4300' left of centerline, 100' AGL/1144' MSL. Tree 2921' from DER, 977' left of centerline, 1237' MSL. Trees beginning 2937' from DER, 109' left of centerline, up to 802' MSL. Vegetation, trees, poles and transmission lines beginning 3056' from DER, 3' right of centerline, up to 100' AGL/1259' MSL. Trees and vegetation beginning 3058' from DER, 67' left of centerline, up to 1168' MSL. Trees, transmission lines, and poles beginning 3122' from DER, 202' left of centerline, up to 793' MSL. Transmission line, pole and Trees beginning 3646' from DER, 96' left of centerline, up to 76' AGL/800' MSL. Tree 4345' from DER, 1386' left of centerline, 806' MSL. Tree 4747' from DER, 500' left of centerline, 824' MSL. Trees beginning 5139' from DER, 24' left of centerline, up to 854' MSL. Trees beginning 5779' from DER, 265' left of centerline, up to 857' MSL. Tree 1 NM from DER, 30' left of centerline, 865' MSL. Tree 1.1 NM from DER, 235' left of centerline, 872' MSL. Trees beginning 1.1 NM from DER, 78' left of centerline, up to 876' MSL. Trees beginning 1.1 NM from DER, 68' left of centerline, up to 880' MSL. Trees beginning 1.2 NM from DER, 783' left of centerline, up to 882' MSL. Tree 1.2 NM from DER, 1615' left of centerline, 885' MSL. Trees beginning 1.2 NM from DER, 971' left of centerline, up to 889' MSL. Trees beginning 1.2 NM from DER, 766' left of centerline, up to 892' MSL. Tree 1.2 NM from DER, 1091' left of centerline, 893' MSL. Tree 1.3 NM from DER, 1450' left of centerline, 900' MSL. Trees beginning 1.3 NM from DER, 1106' left of centerline, up to 904' MSL. Trees beginning 1.3 NM from DER, 969' left of centerline, up to 912' MSL. Trees beginning 1.3 NM from DER, 1370' left of centerline, up to 915' MSL. Tree 1.4 NM from DER, 2147' left of centerline, 926' MSL. Tree 1.5 NM from DER, 1329' left of centerline, 936' MSL. Trees beginning 1.6 NM from DER, 1733' left of centerline, up to 954' MSL. Tree 1.6 NM from DER, 2216' left of centerline, 956' MSL. Tree 1.8 NM from DER, 1162' left of centerline, 989' MSL. Trees beginning 1.9 NM from DER, 2071' left of centerline, up to 1026' MSL. Tree 1.9 NM from DER, 544' left of centerline, 1046' MSL. **Rwy 24**, lighting 9' from DER, 95' left of centerline, 2' AGL/675' MSL. Lighting 9' from DER, 99' right of centerline, 2' AGL/675' MSL. Terrain beginning 23' from DER, 334' left of centerline, up to 683' MSL. Trees beginning 745' from DER, 89' left of centerline, up to 749' MSL. Trees beginning 1337' from DER, 8' right of centerline, up to 741' MSL. Trees beginning 2095' from DER, 134' left of centerline, up to 757' MSL. Tree 2504' from DER, 1041' right of centerline, 744' MSL. Tree 3186' from DER, 445' left of centerline, 758' MSL. Trees beginning 3193' from DER, 405' left of centerline, up to 768' MSL. Trees beginning 3300' from DER, 424' left of centerline, up to 772' MSL.

01 FEB 2018 to 01 MAR 2018

01 FEB 2018 to 01 MAR 2018

**TAKEOFF MINIMUMS, (OBSTACLE) DEPARTURE PROCEDURES, AND  
DIVERSE VECTOR AREA (RADAR VECTORS)**

18032

NE-2




**TAKEOFF MINIMUMS, (OBSTACLE) DEPARTURE PROCEDURES, AND  
DIVERSE VECTOR AREA (RADAR VECTORS)**


18032

**DUNKIRK, NY (CON'T)  
CHAUTAUQUA COUNTY/ DUNKIRK (DKK)  
(CON'T)**

**Rwy 24 (CON'T)**, Trees beginning 3462' from DER, 405' left of centerline, up to 778' MSL. Tree 3522' from DER, 107' right of centerline, 774' MSL. Tree 3564' from DER, 892' left of centerline, 779' MSL. Trees beginning 3573' from DER, 370' left of centerline, up to 785' MSL. Trees beginning 3665' from DER, 875' left of centerline, up to 788' MSL. **Rwy 33**, vegetation 7' from DER, 436' left of centerline, 674' MSL. Tree 912' from DER, 29' left of centerline, 691' MSL. Trees beginning 945' from DER, 148' left of centerline, up to 694' MSL. Tree 957' from DER, 65' right of centerline, 685' MSL. Tree 1080' from DER, 234' left of centerline, 704' MSL. Trees beginning 1161' from DER, 178' left of centerline, up to 721' MSL. Trees beginning 1183' from DER, 110' right of centerline, up to 715' MSL. Trees beginning 1622' from DER, 46' left of centerline, up to 722' MSL. Tree 2189' from DER, 287' right of centerline, 719' MSL. Tree 2290' from DER, 19' right of centerline, 724' MSL. Tree 2366' from DER, 150' right of centerline, 727' MSL. Tree 2401' from DER, 11' right of centerline, 735' MSL. Tree 2516' from DER, 11' left of centerline, 724' MSL. Tree 2523' from DER, 827' left of centerline, 730' MSL. Tree 3296' from DER, 190' right of centerline, 747' MSL.

**EAST HAMPTON, NY  
EAST HAMPTON (HTO)  
TAKEOFF MINIMUMS AND (OBSTACLE)  
DEPARTURE PROCEDURES**
**AMDT 3A 16063 (FAA)**

TAKEOFF MINIMUMS: **Rwy 34**, 300-1¼ or std. w/ min. climb of 430' per NM to 400.

TAKEOFF OBSTACLE NOTES: **Rwy 10**, tree and vehicles on roadway beginning 107' from DER, 259' left of centerline, up to 52' AGL/85' MSL. Tree and vehicles on roadway beginning 297' from DER, on centerline, up to 52' AGL/79' MSL. Trees beginning 370' from DER, 296' left of centerline, up to 60' AGL/93' MSL. Trees beginning 580' from DER, 290' right of centerline, up to 61' AGL/88' MSL. Tree 1105' from DER, 427' left of centerline, 56' AGL/95' MSL. Trees beginning 1131' from DER, 405' left of centerline, up to 59' AGL/98' MSL. Trees beginning 1493' from DER, 89' left of centerline, up to 65' AGL/100' MSL. Trees beginning 1862' from DER, 386' left of centerline, up to 66' AGL/102' MSL. Tree 2227' from DER, 520' right of centerline, 58' AGL/90' MSL. **Rwy 16**, tree and vehicles on roadway beginning 177' from DER, 122' right of centerline, up to 44' AGL/78' MSL. Tree 375' from DER, 195' left of centerline, 35' AGL/62' MSL. Tree 607' from DER, 205' left of centerline, 49' AGL/75' MSL. Tree and railroad beginning 770' from DER, 4' left of centerline, up to 50' AGL/76' MSL. **Rwy 28**, trees beginning 53' from DER, 289' left of centerline, up to 49' AGL/103' MSL. Trees beginning 221' from DER, 290' right of centerline, up to 49' AGL/107' MSL. Tree 658' from DER, 397' right of centerline, 57' AGL/117' MSL. Trees beginning 786' from DER, 303' left of centerline, up to 52' AGL/115' MSL. Trees 1034' from DER, 421' right of centerline, up to 59' AGL/123' MSL. Trees beginning 1170' from DER, 261' right of centerline, up to 67' AGL/128' MSL. Trees beginning 1691' from DER, 5' right of centerline, up to 63' AGL/133' MSL. Tree 1698' from DER, 592' left of centerline, 57' AGL/126' MSL. Tree 2171' from DER, 668' left of centerline, 64' AGL/133' MSL. Trees beginning 2353' from DER, 308' left of centerline, up to 67' AGL/137' MSL. Trees beginning 2695' from DER, 283' left of centerline, up to 66' AGL/138' MSL. Trees beginning 3245' from DER, 336' right of centerline, up to 65' AGL/143' MSL. **Rwy 34**, tree and vehicles on roadway beginning 54' from DER, on centerline, up to 43' AGL/81' MSL. Tree 103' from DER, 151' left of centerline, 36' AGL/76' MSL. Tree 354' from DER, 188' left of centerline, 41' AGL/81' MSL. Tree 654' from DER, 212' left of centerline, 48' AGL/86' MSL. Powerlines beginning 1264' from DER, left and right of centerline, up to 132' AGL/176' MSL. Tree 2499' from DER, 498' left of centerline, 36' AGL/144' MSL. Tree 3947' from DER, 1539' left of centerline, 100' AGL/259' MSL. Tree 6049' from DER, 1980' left of centerline, 100 AGL/239' MSL.

01 FEB 2018 to 01 MAR 2018

01 FEB 2018 to 01 MAR 2018


**TAKEOFF MINIMUMS, (OBSTACLE) DEPARTURE PROCEDURES, AND  
DIVERSE VECTOR AREA (RADAR VECTORS)**


18032

NE-2

# TAKEOFF MINIMUMS, (OBSTACLE) DEPARTURE PROCEDURES, AND DIVERSE VECTOR AREA (RADAR VECTORS)

18032

## ELLENVILLE, NY

JOSEPH Y RESNICK (N89)

TAKEOFF MINIMUMS AND (OBSTACLE)

DEPARTURE PROCEDURES

AMDT 1 12320 (FAA)

TAKEOFF MINIMUMS: **Rwy 4**, 400-1½ w/min. climb of 402' per NM to 4300 or std. w/min. climb of 490' per NM to 4300 or 2700-3 for climb in visual conditions.

**Rwy 22**, std. w/min. climb of 470' per NM to 2000 or 2700-3 for climb in visual conditions.

DEPARTURE PROCEDURE: **Rwy 4**, climb on heading 047° to 4300' before proceeding on course or for climb in visual conditions, cross Joseph Y Resnick airport at or above 2800 before proceeding on course. When executing VCOA, notify ATC prior to departure.

**Rwy 22**, climb on heading 235° to 2900' before proceeding on course or for climb in visual conditions, cross Joseph Y Resnick airport at or above 2800 before proceeding on course. When executing VCOA, notify ATC prior to departure.

TAKEOFF OBSTACLE NOTES: **Rwy 4**, trees 20' from DER, 11' right of centerline, up to 109' AGL/419' MSL. Trees 1187' from DER, 456' left of centerline, up to 109' AGL/399' MSL. Trees 2154' from DER, 416' right of centerline, 109' AGL/379' MSL. Trees 2962' from DER, 780' left of centerline, 109' AGL/399' MSL. Trees 4024' from DER, 1005' left of centerline, 109' AGL/419' MSL. **Rwy 22**, trees beginning at DER, 175' right of centerline, up to 109' AGL/419' MSL. Trees beginning at DER, 288' left of centerline, up to 109' AGL/419' MSL. Pole 2196' from DER, 169' left of centerline, 84' AGL/384' MSL.

## ELMIRA, NY

ELMIRA/CORNING RGNL (ELM)

TAKEOFF MINIMUMS AND (OBSTACLE)

DEPARTURE PROCEDURES

AMDT 9 12320 (FAA)

TAKEOFF MINIMUMS: **Rwys 5, 23**, NA-ATC. **Rwy 6**, 500-2¾ or std. with a min. climb of 338' per NM to 1600. **Rwy 10**, 500-2 with a min. climb of 269' per NM to 2200, or std. w/min. climb of 400' per NM to 1600 or 2000-3 for climb in visual conditions. **Rwy 24**, std. with a min. climb of 405' per NM to 2300, or 2000-3 for climb in visual conditions. **Rwy 28**, 800-3 w/min. climb of 373' per NM to 2400, or std. w/min. climb of 639' per NM to 2000 or 2000-3 for climb in visual conditions.

DEPARTURE PROCEDURE: **Rwy 6**, climb heading 062° to 2100 before proceeding on course. **Rwy 10**, climb heading 101° to 2500 before proceeding on course. For climb in visual conditions: cross Elmira/Corning RGNL Airport at or above 2800 MSL before proceeding on course. When executing VCOA notify ATC prior to departure. **Rwy 24**, climb heading 242° to 2600 before proceeding on course. For climb in visual conditions: cross Elmira/Corning RGNL Airport at or above 2800 MSL before proceeding on course. When executing VCOA notify ATC prior to departure. **Rwy 28**, climb heading 281° to 2400 before proceeding on course. For climb in visual conditions: cross Elmira/Corning RGNL Airport at or above 2800 MSL before proceeding on course. When executing VCOA, notify ATC prior to departure.

## ELMIRA, NY (CON'T)

ELMIRA/CORNING RGNL (CON'T)

TAKEOFF OBSTACLE NOTES: **Rwy 6**, trees beginning 581' from DER, 513' left of centerline, up to 34' AGL/1023' MSL. Trees beginning 3057' from DER, 192' right of centerline, up to 45' AGL/1044' MSL. Trees 1.5 NM from DER, 2967' left of centerline, up to 74' AGL/1363' MSL. Trees 2.1 NM from DER, 3856' left of centerline, up to 49' AGL/1428' MSL. Trees 2.2 NM from DER, 3892' left of centerline, up to 56' AGL/1335' MSL. **Rwy 10**, wall, building, poles, and trees beginning 25' from DER, 37' left of centerline, up to 52' AGL/1021' MSL. Poles and trees beginning 128' from DER, 110' right of centerline, up to 99' AGL/1096' MSL. Trees 1.3 NM from DER, 2592' right of centerline, up to 92' AGL/1351' MSL. Trees 1.3 NM from DER, 2662' right of centerline, up to 97' AGL/1357' MSL. Communications tower 1.7 NM from DER, 1756' right of centerline, 249' AGL/1236' MSL. **Rwy 24**, terrain, sign, and trees beginning 34' from DER, 13' left of centerline, up to 59' AGL/1005' MSL. Terrain beginning 11' from DER, 8' right of centerline, up to 944' MSL. **Rwy 28**, antenna and trees beginning 7' from DER, 186' left of centerline, up to 100' AGL/1039' MSL. Terrain, vehicles on road, tower, antenna, buildings, poles and trees beginning 27' from DER, 369' right of centerline, up to 90' AGL/1079' MSL. Trees 1.4 NM from DER, 2095' right of centerline, up to 75' AGL/1624' MSL. Trees 1.7 NM from DER, 2432' right of centerline, up to 59' AGL/1708' MSL. Trees 2.5 NM from DER, 4399' right of centerline, up to 53' AGL/1672' MSL.

## ENDICOTT, NY

TRI-CITIES (CZG)

TAKEOFF MINIMUMS AND (OBSTACLE)

DEPARTURE PROCEDURES

AMDT 4 10154 (FAA)

TAKEOFF MINIMUMS: **Rwy 3**, std. w/ min. climb of 515' per NM to 1700 or 700-2 with min. climb of 242 to 2000 or 1600-2 ½ for climb in visual conditions. **Rwy 21**, std. w/ min. climb of 604' per NM to 2100 or 900-3 with min. climb of 470 to 2200 or 1600-2½ for climb in visual conditions.

DEPARTURE PROCEDURE: **Rwy 3**, climb heading 036° to 2000 before proceeding on course or for climb in visual conditions: cross Tri-Cities airport at or above 2300 before proceeding on course. **Rwy 21**, climb heading 216° to 2200 before proceeding on course or for climb in visual conditions: cross Tri-Cities airport at or above 2300 before proceeding on course.

TAKEOFF OBSTACLE NOTES: **Rwy 3**, tree 1' from DER, 418' left of centerline, 78' AGL/907' MSL. Multiple trees and train on tracks beginning 163' from DER, 56' left of centerline, up to 110' AGL/1469' MSL. Multiple trees and tower beginning 1699' from DER, 259' right of centerline, up to 106' AGL/915' MSL. **Rwy 21**, multiple trees, pole and tower beginning 51' from DER, 63' left of centerline, up to 84' AGL/1473' MSL. Multiple trees beginning 751' from DER, 73' right of centerline, up to 86' AGL/1175' MSL.

01 FEB 2018 to 01 MAR 2018

01 FEB 2018 to 01 MAR 2018

# TAKEOFF MINIMUMS, (OBSTACLE) DEPARTURE PROCEDURES, AND DIVERSE VECTOR AREA (RADAR VECTORS)

18032

NE-2

# TAKEOFF MINIMUMS, (OBSTACLE) DEPARTURE PROCEDURES, AND DIVERSE VECTOR AREA (RADAR VECTORS)

18032

## FARMINGDALE, NY

REPUBLIC (FRG)

TAKEOFF MINIMUMS AND (OBSTACLE)

DEPARTURE PROCEDURES

AMDT 7 15008 (FAA)

TAKEOFF MINIMUMS: **Rwy 1**, 300-1¼ or std. w/min. climb of 220' per NM to 300, or alternatively, with standard takeoff minimums and a normal 200' per NM climb gradient, takeoff must occur no later than 1500' prior to DER. **Rwy 32**, 300-1¼ or std. w/ min. climb of 215' per NM to 400, or alternatively, with standard takeoff minimums and a normal 200' per NM climb gradient, takeoff must occur no later than 1500' prior to DER.

DEPARTURE PROCEDURE: **Rwy 1**, climb heading 013° to 700 before turning left. **Rwy 32**, climb heading 326° to 700 before turning right.

TAKEOFF OBSTACLE NOTES: **Rwy 1**, fence 3' from DER, 421' left of centerline, 9' AGL/88' MSL. Building, stack and trees beginning 264' from DER, 246' right of centerline, up to 55' AGL/134' MSL. Trees beginning 315' from DER, 568' right of centerline, up to 76' AGL/155' MSL. Pole and trees beginning 1266' from DER, 279' right of centerline, up to 54' AGL/137' MSL. Tank, elevator and trees beginning 1382' from DER, 447' left of centerline, up to 69' AGL/141' MSL. Tank 5858' from DER, 1440' left of centerline, 151' AGL/244' MSL. **Rwy 14**, pole and vehicles on road beginning 181' from DER, 73' right of centerline, up to 17' AGL/74' MSL. Trees beginning 534' from DER, 97' left of centerline, up to 33' AGL/88' MSL. Trees beginning 915' from DER, 24' right of centerline, up to 66' AGL/119' MSL. Pole and trees beginning 1124' from DER, 245' left of centerline, up to 50' AGL/104' MSL. Trees 2135' from DER, 331' left of centerline, up to 77' AGL/124' MSL. **Rwy 19**, sign, building, poles, and trees beginning 77' from DER, 208' right of centerline, up to 43' AGL/102' MSL. Trees beginning 182' from DER, 498' left of centerline, up to 43' AGL/100' MSL. Pole 861' from DER, 70' left of centerline, 41' AGL/99' MSL. Poles and trees beginning 879' from DER, 14' right of centerline, up to 56' AGL/115' MSL. Poles and trees beginning 1207' from DER, 308' left of centerline, up to 70' AGL/124' MSL. Tower 2453' from DER, 318' right of centerline, 84' AGL/141' MSL. **Rwy 32**, fence 146' from DER, 243' right of centerline, 12' AGL/88' MSL. Pole 329' from DER, 451' left of centerline, 30' AGL/103' MSL. Building and poles beginning 1489' from DER, 188' left of centerline, up to 69' AGL/142' MSL. Trees 1690' from DER, 22' right of centerline, up to 52' AGL/124' MSL. Tank 1.3 NM from DER, 1122' left of centerline, 107' AGL/296' MSL.

## FISHERS ISLAND, NY

ELIZABETH FIELD (0B8)

TAKEOFF MINIMUMS AND (OBSTACLE)

DEPARTURE PROCEDURES

AMDT 2 98337 (FAA)

TAKEOFF MINIMUMS: **Rwy 7**, 300-1 or std. with a min. climb of 300' per NM to 300.

TAKEOFF OBSTACLE NOTES: **Rwy 7**, 15' AGL bunker 25' from DER, right of centerline.

## FULTON, NY

OSWEGO COUNTY (FZY)

TAKEOFF MINIMUMS AND (OBSTACLE)

DEPARTURE PROCEDURES

AMDT 1 01137 (FAA)

TAKEOFF MINIMUMS: **Rwy 6**, 300-1 or std. with a min. climb gradient of 270' per NM to 900.

TAKEOFF OBSTACLE NOTES: **Rwy 6**, hill 1400' from DER, on centerline 50' AGL/549' MSL. **Rwy 15**, trees 1700' from DER, on centerline 85' AGL/560' MSL. **Rwy 24**, trees 1350' from DER, on centerline 60' AGL/517' MSL. **Rwy 33**, road 400' from DER, on centerline 15' AGL/462' MSL.

## GLENS FALLS, NY

FLOYD BENNETT MEMORIAL (GFL)

TAKEOFF MINIMUMS AND (OBSTACLE)

DEPARTURE PROCEDURES

AMDT 1 10350 (FAA)

TAKEOFF MINIMUMS: **Rwy 1**, std. w/ min. climb of 385' per NM to 2500 or 2000-3 for climb in visual conditions.

**Rwy 12**, std. w/ min. climb of 304' per NM to 1800 or 2000-3 for climb in visual conditions.

**Rwy 30**, std. w/ min. climb of 345' per NM to 2500 or 2000-3 for climb in visual conditions.

DEPARTURE PROCEDURE: **Rwy 1**, climbing right turn to 2500 direct GANSE (GF) LOM before proceeding on course. For climb in visual conditions: cross Floyd Bennett Memorial Airport at or above 2200 MSL before proceeding on course. **Rwy 12**, climbing right turn to 1800 direct GANSE (GF) LOM before proceeding on course. For climb in visual conditions: cross Floyd Bennett Memorial Airport at or above 2200 MSL before proceeding on course. **Rwy 19**, climb heading 192° to 1400 before proceeding on course. **Rwy 30**, climbing left turn to 2500 direct GANSE (GF) LOM before proceeding on course. For climb in visual conditions: cross Floyd Bennett Memorial Airport at or above 2200 MSL before proceeding on course.

TAKEOFF OBSTACLE NOTES: **Rwy 1**, trees beginning 1185' from DER, 65' left of centerline, up to 88' AGL/503' MSL. Trees beginning 1423' from DER, 24' right of centerline, up to 88' AGL/535' MSL. Multiple towers beginning 5140' from DER, 5' left of centerline, up to 69' AGL/498' MSL. **Rwy 12**, trees beginning 852' from DER, 115' left of centerline, up to 77' AGL/416' MSL. Vehicles on road and trees beginning 378' from DER, 3' right of centerline, up to 80' AGL/429' MSL. **Rwy 19**, trees beginning 703' from DER, 121' left of centerline, up to 65' AGL/454' MSL. Bush and trees beginning 73' from DER, 46' right of centerline, up to 77' AGL/456' MSL. **Rwy 30**, trees beginning 89' from DER, 20' left of centerline, up to 93' AGL/458' MSL. Trees beginning 1281' from DER, 32' right of centerline, up to 89' AGL/472' MSL.

01 FEB 2018 to 01 MAR 2018

01 FEB 2018 to 01 MAR 2018

# TAKEOFF MINIMUMS, (OBSTACLE) DEPARTURE PROCEDURES, AND DIVERSE VECTOR AREA (RADAR VECTORS)

18032

NE-2

# TAKEOFF MINIMUMS, (OBSTACLE) DEPARTURE PROCEDURES, AND DIVERSE VECTOR AREA (RADAR VECTORS)

18032

## HAMILTON, NY

HAMILTON MUNI (VGC)

TAKEOFF MINIMUMS AND (OBSTACLE)  
DEPARTURE PROCEDURES  
AMDT 2 08353 (FAA)

TAKEOFF MINIMUMS: **Rwy 17**, 600-3 w/ min. climb of 288' per NM to 2100 or 1300-2½ for climb in visual conditions. **Rwy 35**, 400-1 w/ min. climb of 364' per NM to 2300 or 1300-2½ for climb in visual conditions.

DEPARTURE PROCEDURE: **Rwy 17**, climb heading 170° to 2100 or for climb in visual conditions, cross Hamilton Muni airport at or above 2300 before proceeding on course. **Rwy 35**, climb heading 350° to 2300 or for climb in visual conditions, cross Hamilton Muni airport at or above 2300 before proceeding on course.

TAKEOFF OBSTACLE NOTES: **Rwy 17**, multiple trees beginning 37' from DER, 163' right of centerline, up to 100' AGL/1219' MSL. Railroad 94' from DER, 217' left of centerline, 23' AGL/1162' MSL. Multiple trees beginning 815' from DER, 583' left of centerline, up to 100' AGL/1219' MSL. Multiple trees beginning 1861' from DER, 939' right of centerline, up to 100' AGL/1459' MSL. Multiple trees beginning 1.6 NM from DER, 3026' left of centerline, up to 100' AGL/1659' MSL. Multiple trees beginning 2.6 NM from DER, 1078' right of centerline, up to 100' AGL/1679' MSL. **Rwy 35**, railroad 27' from DER, 464' right of centerline, 23' AGL/1162' MSL. Multiple trees beginning 855' from DER, 604' right of centerline, up to 100' AGL/1279' MSL. Multiple trees beginning 2444' from DER, 356' left of centerline, up to 100' AGL/1219' MSL. Multiple trees beginning 4371' from DER, 1630' right of centerline, up to 100' AGL/1439' MSL.

## HAMMONTON, NJ

HAMMONTON MUNI (N81)

TAKEOFF MINIMUMS AND (OBSTACLE)  
DEPARTURE PROCEDURES  
ORIG 09015 (FAA)

DEPARTURE PROCEDURE: **Rwy 3**, climb heading 034° to 600 before turning left.

TAKEOFF OBSTACLE NOTES: **Rwy 21**, trees 1572' from DER, 526' left of centerline, 100' AGL/163' MSL. Trees 3201' from DER, 911' right of centerline, 100' AGL/166' MSL.

## HORNELL, NY

HORNELL MUNI (HTF)

TAKEOFF MINIMUMS AND (OBSTACLE)  
DEPARTURE PROCEDURES  
AMDT 5 12152 (FAA)

TAKEOFF MINIMUMS: **Rwy 18**, std. w/ min. climb of 420' per NM to 2200 or 1500-3 for climb in visual conditions. **Rwy 36**, NA-Obstacles.

DEPARTURE PROCEDURE: **Rwy 18**, climb heading 165° to 2900 before proceeding on course or for climb in visual conditions cross Hornell Muni airport at or above 2600 MSL before proceeding on course.

TAKEOFF OBSTACLE NOTES: **Rwy 18**, trees 1696' from DER, 143' left of centerline, up to 92' AGL/1252' MSL. Trees 5644' from DER, 1746' right of centerline, up to 100' AGL/1499' MSL.

## HUDSON, NY

COLUMBIA COUNTY (1B1)

TAKEOFF MINIMUMS AND (OBSTACLE)  
DEPARTURE PROCEDURES  
AMDT 1 16091 (FAA)

TAKEOFF MINIMUMS: **Rwy 21**, std. w/min. climb of 210' per NM to 2300 or 2200-2½ for climb in visual conditions.

DEPARTURE PROCEDURE: **Rwy 3**, climb heading 025° to 1500 before proceeding on course. **Rwy 21**, climb heading 190° to 2300 before proceeding on course.

VCOA: **Rwy 21**, Obtain ATC approval for climb in visual conditions when requesting IFR clearance. Climb in visual conditions to cross Columbia County airport at or above 2200 before proceeding on course.

TAKEOFF OBSTACLE NOTES: **Rwy 3**, trees beginning 188' from DER, 489' right of centerline up to 44' AGL/246' MSL. Trees and poles beginning 613' from DER, 226' left of centerline up to 65' AGL/271' MSL. Trees beginning 1019' from DER, 699' right of centerline up to 102' AGL/308' MSL. Trees beginning 2198' from DER, 116' left of centerline, up to 91' AGL/299' MSL. Trees beginning 3292' from DER, 555' right of centerline, up to 93' AGL/292' MSL. Trees beginning 3229' from DER, 452' left of centerline, up to 77' AGL/313' MSL. Trees beginning 3967' from DER, 348' left of centerline, up to 80' AGL/338' MSL. Tree 4016' from DER, 443' right of centerline, 88' AGL/321' MSL. **Rwy 21**, fence 104' from DER, 372' left of centerline, 12' AGL/203' MSL. Trees beginning 483' from DER, 533' right of centerline, up to 76' AGL/256' MSL. Trees beginning 570' from DER, 494' left of centerline, up to 79' AGL/253' MSL.

## ITHACA, NY

ITHACA TOMPKINS RGNL (ITH)

TAKEOFF MINIMUMS AND (OBSTACLE)  
DEPARTURE PROCEDURES  
AMDT 5 10098(FAA)

TAKEOFF MINIMUMS: **Rwy 14**, Std. w/ min. climb of 350' per NM to 2400 or 1500-3 for climb in visual conditions. **Rwys 15, 33**, NA-Environmental.

DEPARTURE PROCEDURE: **Rwy 14**, Climb heading 145° to 2400 before turning left or for climb in visual conditions cross Ithaca Tompkins Rgnl airport at or above 2400 before proceeding on course. **Rwy 32**, Climb heading 325° to 1600 before proceeding on course.

# TAKEOFF MINIMUMS, (OBSTACLE) DEPARTURE PROCEDURES, AND DIVERSE VECTOR AREA (RADAR VECTORS)

18032

NE-2

# TAKEOFF MINIMUMS, (OBSTACLE) DEPARTURE PROCEDURES, AND DIVERSE VECTOR AREA (RADAR VECTORS)

18032

## JAMESTOWN, NY CHAUTAUGUA COUNTY/JAMESTOWN (JHW)

### TAKEOFF MINIMUMS AND (OBSTACLE) DEPARTURE PROCEDURES

TAKEOFF OBSTACLE NOTES: **Rwy 7**, multiple trees beginning 495' from DER, 525' left of centerline, up to 30' AGL/1749' MSL. **Rwy 13**, rising terrain beginning 200' from DER, left and right of centerline, up to 1740' MSL. Multiple trees beginning 228' from DER, 232' left of centerline, up to 47' AGL/1795' MSL. Vent on building 527' from DER, 628' right of centerline, 38' AGL/1768' MSL. Vehicles on road, 737' from DER, 329' right of centerline, 15' AGL/1756' MSL. Vent on building 1003' from DER, 426' right of centerline, 38' AGL/1768' MSL. Obstacle light on building 1232' from DER, 309' right of centerline, 38' AGL/1768' MSL. Multiple trees beginning 831' from DER, 77' right of centerline, up to 90' AGL/1799' MSL. **Rwy 25**, antenna on building 424' from DER, 262' left of centerline, 14' AGL/1733' MSL. Tree 731' from DER, 652' left of centerline, 72' AGL/1761' MSL. **Rwy 31**, vehicles on road 0' from DER, 403' right of centerline, 15' AGL/1734' MSL. Rising terrain beginning abeam DER, left and right of centerline, up to 1749' MSL. Multiple trees beginning 404' from DER, 127' right of centerline, up to 62' AGL/1801' MSL. Multiple trees beginning 577' from DER, 630' left of centerline, up to 44' AGL/1793' MSL. Tree 3695' from DER, 728' left of DER, 35' AGL/1834' MSL. Tree 6082' from DER, 846' left of centerline, 100' AGL/1879' MSL.

## JOHNSTOWN, NY FULTON COUNTY (NYO)

### TAKEOFF MINIMUMS AND (OBSTACLE) DEPARTURE PROCEDURES AMDT 2 10266 (FAA)

TAKEOFF OBSTACLE NOTES: **Rwy 10**, trees beginning 83' from DER, 62' left of centerline, up to 57' AGL/936' MSL. Trees beginning 206' from DER, 176' right of centerline, up to 43' AGL/922' MSL. **Rwy 28**, trees beginning 310' from DER, 48' left of centerline, up to 72' AGL/921' MSL. Trees beginning 23' from DER, 54' right of centerline, up to 73' AGL/892' MSL.

## KINGSTON, NY KINGSTON-ULSTER (N0N)

### TAKEOFF MINIMUMS AND (OBSTACLE) DEPARTURE PROCEDURES AMDT 1 13122 (FAA)

TAKEOFF MINIMUMS: **Rwy 33**, 300-2 w/ min. climb of 255' per NM to 1200.  
DEPARTURE PROCEDURE: **Rwy 15**, climb to 3000 on heading 153° and PWL VOR/DME R-316 to TRESA INT before proceeding on course. **Rwy 33**, climbing right turn to 3000 on heading 170° and PWL VOR/DME R-316 to TRESA INT before proceeding on course.  
TAKEOFF OBSTACLE NOTES: **Rwy 15**, trees and poles abeam DER, 806' left of centerline, up to 99' AGL/221' MSL. Trees and poles beginning 27' from DER, 170' right of centerline, up to 40' AGL/162' MSL. Vehicles on road 235' from DER, 37' right of centerline, up to 17' AGL/141' MSL. Trees beginning 1322' from DER, 835' right of centerline, up to 89' AGL/203' MSL. Trees beginning 1325' from DER, 846' left of centerline, up to 99' AGL/215' MSL. **Rwy 33**, construction cone 6' from DER, 39' right of centerline, 10' AGL/149' MSL. Trees and poles beginning 19' from DER, 933' left of centerline, up to 99' AGL/349' MSL. Trees and poles beginning 60' from DER, 922' right of centerline, up to 69' AGL/215' MSL. Buildings beginning 60' from DER, from 577' left of centerline to 569' right of centerline, up to 29' AGL/271' MSL. Vehicles on road beginning 184' from DER, from 285' left of centerline to 496' right of centerline, up to 17' AGL/182' MSL. Trees beginning 2004' from DER, 1936' left of centerline, up to 94' AGL/362' MSL. Trees beginning 2004' from DER, 1908 right of centerline, up to 110' AGL/388' MSL.

## LAKE PLACID, NY

### LAKE PLACID (LKP)

### TAKEOFF MINIMUMS AND (OBSTACLE) DEPARTURE PROCEDURES ORIG 03191 (FAA)

TAKEOFF MINIMUMS: **Rwy 14**, NA-obstacles. **Rwy 32**, std. with a min. climb of 420' per NM to 4000.  
DEPARTURE PROCEDURE: **Rwy 32**, climbing left turn to 5000 via heading 304° to intercept SLK R-180 to SLK VOR/DME before proceeding on course.

## LAKEHURST MAXFIELD FLD (JOINT BASE MC GUIRE DIX LAKEHURST) (KNEL)

### LAKEHURST, NJ

### TAKEOFF MINIMUMS AND (OBSTACLE) DEPARTURE PROCEDURES AMDT 1, 17285

TAKEOFF OBSTACLE NOTES: **Rwy 6**, terrain 0' from DER, 500' right of cntrln, 105' MSL. Terrain 150' from DER, 540' left of cntrln, 120' MSL. Terrain 173' from DER, 546' left of cntrln, 120' MSL. Terrain 546' from DER, 566' right of cntrln, 115' MSL. Terrain 957' from DER, 668' left of cntrln, 128' MSL. Terrain 1069' from DER, 540' left of cntrln, 130' MSL. **Rwy 15**, terrain 0' from DER, 484' right of cntrln, 96' MSL. Terrain 0' from DER, 500' left of cntrln, 98' MSL. **Rwy 24**, terrain 0' from DER, 500' left of cntrln, 96' MSL. Terrain 190' from DER, 551' right of cntrln, 101' MSL. **Rwy 33**, terrain 0' from DER, 500' left of cntrln, 102' MSL. Terrain 140' from DER, 522' right of cntrln, 112' MSL. Terrain 523' from DER, 535' right of cntrln, 118' MSL. Terrain 507' from DER, 636' right of cntrln, 119' MSL.

# TAKEOFF MINIMUMS, (OBSTACLE) DEPARTURE PROCEDURES, AND DIVERSE VECTOR AREA (RADAR VECTORS)

18032

NE-2

# TAKEOFF MINIMUMS, (OBSTACLE) DEPARTURE PROCEDURES, AND DIVERSE VECTOR AREA (RADAR VECTORS)

18032

**LAKEWOOD, NJ****LAKEWOOD (N12)****TAKEOFF MINIMUMS AND (OBSTACLE)  
DEPARTURE PROCEDURES**

AMDT 2 14149 (FAA)

TAKEOFF OBSTACLE NOTES: **Rwy 6**, aircraft on taxiway abeam DER, 220' right of centerline, up to 15' AGL/49' MSL. Vehicles on road beginning 5' from DER, crossing left to right, up to 15' AGL/49' MSL. Trees, buildings and poles beginning 481' from DER, left and right of centerline, up to 100' AGL/139' MSL. Transmission towers beginning 3815' from DER, right and left of centerline, up to 150' AGL/184' MSL. **Rwy 24**, aircraft on taxiway abeam DER, 225' left of centerline, up to 15' AGL/59' MSL. Trees abeam DER, 270' right and 275' left of centerline, up to 100' AGL/144' MSL. Trees, buildings and vehicle on road beginning 371' from DER right and left of centerline up to 100' AGL/144' MSL. Trees, buildings and storage tank beginning 881' from DER, left and right of centerline, up to 100' AGL/169' MSL.

**LE ROY, NY****LE ROY (5G0)****TAKEOFF MINIMUMS AND (OBSTACLE)  
DEPARTURE PROCEDURES**

AMDT 1 12264 (FAA)

TAKEOFF MINIMUMS: **Rwy 28**, 300-1½ or std. w/min. climb of 267' per NM to 1000.

DEPARTURE PROCEDURE: **Rwy 28**, climb heading 284° to 1500 before turning left.

TAKEOFF OBSTACLE NOTES: **Rwy 10**, trees and poles beginning 51' from DER, 101' right of centerline, up to 73' AGL/852' MSL. Trees and poles beginning 26' from DER, 51' left of centerline, up to 64' AGL/843' MSL. Buildings beginning 325' from DER, 116' right of centerline, up to 53' AGL/819' MSL. Terrain beginning 96' from DER, 233' right of centerline, up to 787' MSL. **Rwy 28**, trees and poles beginning 2' from DER, 38' left of centerline, up to 112' AGL/977' MSL. Buildings, water tower and grain bins beginning 172' from DER, 38' left of centerline, up to 106' AGL/931' MSL. Trees beginning 49' from DER, 100' right of centerline, up to 873' MSL. Railroad 100' from DER, 261' right of centerline, 23' AGL/825' MSL.

**LINCOLN PARK, NJ****LINCOLN PARK (N07)****TAKEOFF MINIMUMS AND (OBSTACLE)  
DEPARTURE PROCEDURES**

ORIG-A 11069 (FAA)

TAKEOFF MINIMUMS: **Rwy 1**, 900-2. **Rwy 19**, 300-1. DEPARTURE PROCEDURE: **Rwy 1**, climb visually over airport to 1000 before proceeding on course. **Rwy 19**, climb runway heading to 1000 before proceeding on course.

TAKEOFF OBSTACLE NOTES: **Rwy 19**, towers 4200' from DER, 96' right of centerline, 132' AGL/307' MSL.

**LINDEN, NJ****LINDEN (LDJ)****TAKEOFF MINIMUMS AND (OBSTACLE)  
DEPARTURE PROCEDURES**

AMDT 2A 11125 (FAA)

TAKEOFF MINIMUMS: **Rwy 9**, 300-1¼ or std. w/min. climb of 259' per NM to 400. **Rwy 27**, 300-1.

TAKEOFF OBSTACLE NOTES: **Rwy 9**, pole and building 667' from DER, 53' right of centerline, up to 60' AGL/77' MSL. Multiple stacks 1.3 NM from DER, 1135' right of centerline, up to 275' AGL/287' MSL. **Rwy 27**, stack 825' from DER, 655' right of centerline, 86' AGL/113' MSL. Multiple buildings 2197' from DER, left and right of centerline, up to 110' AGL/140' MSL.

**LOCKPORT, NY****NORTH BUFFALO SUBURBAN (0G0)****TAKEOFF MINIMUMS AND (OBSTACLE)  
DEPARTURE PROCEDURES**

ORIG 97142 (FAA)

TAKEOFF MINIMUMS: **Rwys 10, 28**, 300-1.

TAKEOFF OBSTACLE NOTES: **Rwy 10**, 46' AGL tree 353' from DER, 75' right of centerline. **Rwy 28**, 60' AGL tree 650' from DER, 350' right of centerline.

**LUMBERTON, NJ****FLYING W (N14)****TAKEOFF MINIMUMS AND (OBSTACLE)  
DEPARTURE PROCEDURES**

AMDT 1 12208 (FAA)

TAKEOFF OBSTACLE NOTES: **Rwy 1**, transmission line towers beginning 4216' from DER, 396' left of centerline, up to 132' AGL/179' MSL. Transmission line tower beginning 4239' from DER, 462' right of centerline, up to 147' AGL/191' MSL. Vehicle on road 88' from DER, 300' left of centerline, 15' AGL/77' MSL. **Rwy 19**, trees beginning 16' from DER, 1' left of centerline, up to 136' AGL/152' MSL. Trees beginning 16' from DER, 11' right of centerline, up to 105' AGL/131' MSL.

01 FEB 2018 to 01 MAR 2018

01 FEB 2018 to 01 MAR 2018

# TAKEOFF MINIMUMS, (OBSTACLE) DEPARTURE PROCEDURES, AND DIVERSE VECTOR AREA (RADAR VECTORS)

18032

NE-2

# TAKEOFF MINIMUMS, (OBSTACLE) DEPARTURE PROCEDURES, AND DIVERSE VECTOR AREA (RADAR VECTORS)

18032

## MALONE, NY

### MALONE-DUFORT (MAL)

#### TAKEOFF MINIMUMS AND (OBSTACLE) DEPARTURE PROCEDURES

##### AMDT 2 12320 (FAA)

TAKEOFF MINIMUMS: **Rwy 14**, 300-1¾ or std. w/min. climb of 310' per NM to 1200. **Rwy 23**, 500-2¾ or std. w/min. climb of 285' per NM to 1500.

DEPARTURE PROCEDURE: **Rwy 5**, climb heading 052° to 1500 before proceeding on course. **Rwy 14**, climbing left turn heading 050° to 2300 before proceeding on course. **Rwy 23**, climb heading 232° to 1500 before proceeding on course.

TAKEOFF OBSTACLE NOTES: **Rwy 5**, terrain and trees beginning 15' from DER, 316' left and right of centerline, up to 100' AGL/814' MSL. **Rwy 14**, sign, building and trees 171' from DER, 113' right of centerline, up to 100' AGL/809' MSL. Trees, 385' from DER, across centerline, up to 100' AGL/841' MSL. Buildings, poles and trees 868' from DER, 194' right of centerline, up to 100' AGL/887' MSL. Buildings, poles and trees 1180' from DER, 184' left of centerline, up to 100' AGL/896' MSL. Buildings, poles and trees 2304' from DER, 223' right of centerline, up to 100' AGL/947' MSL. Buildings, poles and trees 3797' from DER, left, right and on centerline, up to 100' AGL/1021' MSL. Water tank and trees 5951' from DER, 1145' right of centerline, up to 120' AGL/1036' MSL. **Rwy 23**, trees beginning 61' from DER, 326' right of centerline, up to 100' AGL/827' MSL. Bushes beginning 34' from DER, 271' left of centerline, up to 20' AGL/781' MSL. Buildings and trees beginning 719' from DER, across centerline, up to 100' AGL/901' MSL. **Rwy 32**, trees beginning 64' from DER, 50' right of centerline, up to 100' AGL/828' MSL.

## MANVILLE, NJ

### CENTRAL JERSEY RGNL (47N)

#### TAKEOFF MINIMUMS AND (OBSTACLE) DEPARTURE PROCEDURES

##### AMDT 3 07298 (FAA)

DEPARTURE PROCEDURE: **Rwy 7**, climb heading 069° to 800 before turning left.

TAKEOFF OBSTACLE NOTES: **Rwy 7**, multiple trees and a building beginning 29' from DER, 1266' left of centerline, up to 92' AGL/132' MSL. Multiple trees and poles beginning 238' from DER, 74' right of centerline, up to 94' AGL/154' MSL. **Rwy 25**, multiple trees beginning 183' from DER, 33' right of centerline, up to 93' AGL/173' MSL. Multiple trees beginning 212' from DER, 181' left of centerline, up to 83' AGL/163' MSL.

## MASSENA, NY

### MASSENA INTL-RICHARDS FIELD (MSS)

#### TAKEOFF MINIMUMS AND (OBSTACLE) DEPARTURE PROCEDURES

##### AMDT 8A 14093 (FAA)

TAKEOFF MINIMUMS: **Rwy 23**, 400-2½ or std. w/min. climb of 240' per NM to 800.

TAKEOFF OBSTACLE NOTES: **Rwy 5**, antenna on building 291' from DER, 267' right of centerline, 9' AGL/238' MSL. Obstruction light on localizer 347' from DER, on centerline, 7' AGL/241' MSL. Trees beginning 551' from DER, 514' left of centerline, up to 75' AGL/324' MSL. Trees beginning 825' from DER, 516' right of centerline, up to 56' AGL/292' MSL. **Rwy 9**, bushes and trees beginning 371' from DER, 142' left of centerline, up to 64' AGL/303' MSL. Trees beginning 784' from DER, 51' right of centerline, up to 73' AGL/312' MSL. **Rwy 23**, trees, buildings, and poles beginning 1002' from DER, 249' left of centerline, up to 76' AGL/257' MSL. Trees beginning 2233' from DER, 878' right of centerline, up to 60' AGL/277' MSL. Light on tower 2.1 NM from DER, 2453' right of centerline, 388' AGL/596' MSL. **Rwy 27**, trees beginning 341' from DER, 341' left of centerline, up to 81' AGL/292' MSL. Trees beginning 499' from DER, 289' right of centerline, up to 100' AGL/329' MSL.

## MC GUIRE FLD,(JOINT BASE MC GUIRE DIX LAKEHURST) (KWRI)

### WRIGHTSTOWN, NJ

#### TAKEOFF MINIMUMS AND (OBSTACLE) DEPARTURE PROCEDURES

##### ORIG, 15232

TAKEOFF OBSTACLE NOTES: **Rwy 6**, trees 1432' to 1935' from DER, 426' to 1312' right of centerline, 94' AGL/192' MSL. Trees 2405' from DER, 448' right of centerline, 79' AGL/174' MSL. Trees 2663' from DER, 1186' left of centerline, 79' AGL/177' MSL. trees 3285' from DER, 362' right of centerline, 97' AGL/185' MSL. Trees 3287' from DER, 341' left of centerline, 94' AGL/195' MSL. Trees 3653' from DER, 944' right of centerline, 103' AGL/194' MSL. **Rwy 24**, trees 1973' from DER, 980' left of centerline, 85' AGL/199' MSL. **Rwy 36**, C-5 aircraft on Romeo row 1976' from DER, 1234' right of centerline, 66' AGL/184' MSL.

## MIDDLETOWN, NY

### RANDALL (06N)

#### TAKEOFF MINIMUMS AND (OBSTACLE) DEPARTURE PROCEDURES

##### AMDT 3 12264 (FAA)

TAKEOFF MINIMUMS: **Rwy 26**, 300-2 or std. with a min. climb of 205' per NM to 900, or alternatively, with standard takeoff minimums and a normal 200' per NM climb gradient, takeoff must occur no later than 1300' prior to DER.

DEPARTURE PROCEDURE: **Rwy 26**, climb heading 246° to 1400 before proceeding on course.

TAKEOFF OBSTACLE NOTES: **Rwy 8**, rising terrain beginning abeam DER, 143' left of centerline, up to 536' MSL. Trees beginning 46' from DER, 237' right of centerline, up to 98' AGL/578' MSL. Trees beginning 59' from DER, 412' left of centerline, up to 100' AGL/639' MSL. **Rwy 26**, trees abeam DER, 155' left of centerline, up to 87' AGL/576' MSL. Vehicles on roadway, 186' from DER, left and right of centerline, up to 15' AGL/522' MSL. Trees beginning 343' from DER, 569' right of centerline, 95' AGL/596' MSL. Pole, 506' from DER, 141' right of centerline, 41' AGL/543' MSL.

# TAKEOFF MINIMUMS, (OBSTACLE) DEPARTURE PROCEDURES, AND DIVERSE VECTOR AREA (RADAR VECTORS)

18032

NE-2

# TAKEOFF MINIMUMS, (OBSTACLE) DEPARTURE PROCEDURES, AND DIVERSE VECTOR AREA (RADAR VECTORS)

18032

**MILLBROOK, NY****SKY ACRES (44N)**

TAKEOFF MINIMUMS AND (OBSTACLE)  
DEPARTURE PROCEDURES  
AMDT 2 14149 (FAA)

TAKEOFF MINIMUMS: **Rwy 17**, 600-3 w/min. climb of 240' per NM to 1400 or std. w/min. climb of 390' per NM to 1500. **Rwy 35**, 300-1¼ or std. w/min. climb of 261' per NM to 1100.

DEPARTURE PROCEDURE: **Rwy 17**, climb heading 167° to 2200 then climbing right turn direct IGN VOR/DME before proceeding on course. **Rwy 35**, climb heading 347° to 2100 then climbing left turn direct IGN VOR/DME before proceeding on course.

TAKEOFF OBSTACLE NOTES: **Rwy 17**, trees beginning 156' from DER, 302' left of centerline, up to 96' AGL/779' MSL. Trees beginning 3213' from DER, 1350' left of centerline, up to 100' AGL/1259' MSL. **Rwy 35**, trees beginning 46' from DER, 341' right of centerline, up to 94' AGL/742' MSL. Building 251' from DER, 399' right of centerline, 36' AGL/695' MSL. Tower 1254' from DER, 725' right of centerline, 88' AGL/733' MSL. Trees beginning 1.4 NM from DER, 2762' right of centerline, up to 100' AGL/919' MSL. Trees beginning 407' from DER, 284' left of centerline, up to 78' AGL/665' MSL. Trees beginning 1.3 NM from DER, 1353' left of centerline, up to 100' AGL/919' MSL.

**MILLVILLE, NJ****MILLVILLE MUNI (MIV)**

TAKEOFF MINIMUMS AND (OBSTACLE)  
DEPARTURE PROCEDURES  
AMDT 2 06159 (FAA)

TAKEOFF OBSTACLE NOTES: **Rwy 10**, multiple trees beginning 14' from DER, 498' right of centerline, up to 49' AGL/134' MSL. **Rwy 14**, multiple trees beginning 20' from DER, 167' left and 139' right of centerline, up to 72' AGL/154' MSL. **Rwy 28**, multiple trees beginning 28' from DER, 144' left and 167' right of centerline, up to 80' AGL/154' MSL. **Rwy 32**, multiple trees beginning 34' from DER, 341' left and 273' right of centerline, up to 71' AGL/152' MSL.

**MONTAUK, NY****MONTAUK (MTP)**

TAKEOFF MINIMUMS AND (OBSTACLE)  
DEPARTURE PROCEDURES  
AMDT 3 12292 (FAA)

TAKEOFF MINIMUMS: **Rwy 6**, 300-1 or std. w/min. climb of 491' per NM to 300. **Rwy 24**, 300-1  
DEPARTURE PROCEDURE: **Rwy 24**, climbing right turn to 3000 direct GON VOR/DME before proceeding on course.  
TAKEOFF OBSTACLE NOTES: **Rwy 6**, ship 3600' from DER, on centerline, up to 225' AGL/225' MSL. Building 9' from DER, 188' left of centerline, 14' AGL/34' MSL. Trees beginning 10' from DER, 29' right of centerline, up to 40' AGL/47' MSL. Bushes beginning 514' from DER, 50' right of centerline, up to 21' AGL/41' MSL. Bushes beginning 33' from DER, 9' left of centerline, up to 5' AGL/19' MSL. **Rwy 24**, ship 990' from DER, on centerline, up to 225' AGL/225' MSL. Trees beginning 5' from DER, 152' left of centerline, up to 36' AGL/41' MSL. Poles beginning 155' from DER, 28' left of centerline, up to 34' AGL/41' MSL. Trees beginning 49' from DER, 25' right of centerline, up to 61' AGL/81' MSL. Poles beginning 49' from DER, 75' right of centerline, up to 22' AGL/42' MSL. Building 245' from DER, 316' left of centerline, 29' AGL/36' MSL. Buildings beginning 641' from DER, 189' right of centerline, up to 29' AGL/38' MSL.

**MONTGOMERY, NY****ORANGE COUNTY(MGJ)**

TAKEOFF MINIMUMS AND (OBSTACLE)  
DEPARTURE PROCEDURES  
AMDT 2 00279 (FAA)

TAKEOFF MINIMUMS: **Rwy 3**, 500-2 or std. with a min. climb of 440' per NM to 900. **Rwy 8**, 300-1 or std. with a min. climb of 230' per NM to 600. **Rwy 21**, 500-1 or std. with a min. climb of 210' per NM to 800. **Rwy 26**, 400-1 or std. with a min. climb of 270' per NM to 900.

DEPARTURE PROCEDURE: **Rwy 3**, climb runway heading to 2100 before proceeding on course. **Rwys 8,21,26**, climb runway heading to 1000 before proceeding on course.

**MONTICELLO, NY****SULLIVAN COUNTY INTL (MSV)**

TAKEOFF MINIMUMS AND (OBSTACLE)  
DEPARTURE PROCEDURES  
DEPARTURE PROCEDURE: **Rwy 33**, climb straight ahead to 2500 before departing on course.

**MORRISTOWN, NJ****MORRISTOWN MUNI (MMU)**

TAKEOFF MINIMUMS AND (OBSTACLE)  
DEPARTURE PROCEDURES  
AMDT 6 11293 (FAA)

TAKEOFF MINIMUMS: **Rwy 13**, 300-1½ or std. w/min. climb of 227' per NM to 500, or alternatively, with standard takeoff minimums and a normal 200' per NM climb gradient, takeoff must occur no later than 1900' prior to DER. **Rwy 23**, 400-2 or std. w/min. climb of 394' per NM to 700. **Rwy 31**, 500-1 with minimum climb of 342' per NM to 1600.

DEPARTURE PROCEDURE: **Rwy 5**, climb heading 049° to 700 before turning westbound. **Rwy 13**, climb heading 127° to 800 before turning northbound. **Rwy 23**, climb heading 229° to 900 before turning westbound.

TAKEOFF OBSTACLE NOTES: **Rwy 5**, trees beginning 16' from DER, 300' left/right of centerline, up to 87' AGL/286' MSL. **Rwy 13**, trees, power lines, bushes beginning 50' from DER, 32' left/right of centerline, up to 84' AGL/283' MSL. Tank 1.2 NM from DER, 1830' right of centerline, 135' AGL/395' MSL. **Rwy 23**, trees and buildings beginning 80' from DER, 48' left/right of centerline, up to 91' AGL/290' MSL. **Rwy 31**, trees, power lines, bushes beginning 2' from DER, 6' left/right of centerline, up to 150' AGL/329' MSL.

01 FEB 2018 to 01 MAR 2018

01 FEB 2018 to 01 MAR 2018

# TAKEOFF MINIMUMS, (OBSTACLE) DEPARTURE PROCEDURES, AND DIVERSE VECTOR AREA (RADAR VECTORS)

18032

NE-2



# TAKEOFF MINIMUMS, (OBSTACLE) DEPARTURE PROCEDURES, AND DIVERSE VECTOR AREA (RADAR VECTORS)

18032

## MOUNT HOLLY, NJ

### SOUTH JERSEY RGNL (VAY)

TAKEOFF MINIMUMS AND (OBSTACLE)  
DEPARTURE PROCEDURES  
ORIG 09155 (FAA)

TAKEOFF MINIMUMS: **Rwy 26**, 300-2½ or std. w/ min. climb of 205' per NM to 500. Alternatively, with standard TAKEOFF minimums and a normal 200'/NM climb gradient, TAKEOFF must occur no later than 1300' prior to DER.

TAKEOFF OBSTACLE NOTES: **Rwy 8**, trees beginning 15' from DER, 32' right of centerline, up to 100' AGL/179' MSL. Trees beginning 631' from DER, 339' left of centerline, up to 100' AGL/159' MSL. **Rwy 26**, building 522' from DER, 604' right of centerline, 30' AGL/89' MSL. Building 540' from DER, 546' left of centerline, 30' AGL/89' MSL. Vehicle on road 650' from DER, on centerline, 17' AGL/67' MSL. Trees beginning 1599' from DER, 5' right of centerline, up to 100' AGL/179' MSL. Trees beginning 418' from DER, 408' left of centerline, up to 100' AGL/179' MSL. Tower 1.9 NM from DER, 1712' right of centerline, 179' AGL/348' MSL.

## NEW YORK, NY

### DOWNTOWN MANHATTAN/WALL ST (JRB)

TAKEOFF MINIMUMS AND (OBSTACLE)  
DEPARTURE PROCEDURES  
ORIG 17089 (FAA)

DEPARTURE PROCEDURE: Use JEDIL DEPARTURE.

### EAST 34TH STREET (6N5)

TAKEOFF MINIMUMS AND (OBSTACLE)  
DEPARTURE PROCEDURES  
ORIG 17089 (FAA)

DEPARTURE PROCEDURE: Use JEDIL DEPARTURE

### JOHN F KENNEDY INTL (JFK)

TAKEOFF MINIMUMS AND (OBSTACLE)  
DEPARTURE PROCEDURES  
AMDT 9 15288 (FAA)

TAKEOFF MINIMUMS: **Rwy 31L**, std. w/min. climb of 250' per NM to 2400. **Rwy 31R**, std. w/min. climb of 230' per NM to 2400.

TAKEOFF OBSTACLE NOTES: **Rwy 4L**, fence and light poles beginning 94' from DER, 466' right of centerline, up to 7' AGL/22' MSL. Localizer 204' from DER, on centerline, 6' AGL/21' MSL. Tower, light poles, utility poles, fence, and building beginning 212' from DER, left and right of centerline, up to 15' AGL/28' MSL. Trees beginning 400' from DER, 765' right of centerline, up to 79' AGL/92' MSL. Trees beginning 77' from DER, 655' left of centerline, up to 74' AGL/87' MSL. **Rwy 4R**, lights beginning 6' from DER, 4' right of centerline, up to 2' AGL/13' MSL. Lights beginning 6' from DER, 5' left of centerline, up to 2' AGL/13' MSL. Lights 10' from DER, on centerline, 2' AGL/13' MSL. Trees beginning 493' from DER, 468' right of centerline, up to 34' AGL/48' MSL. Trees beginning 1757' from DER, 626' right of centerline, up to 57' AGL/66' MSL. Trees beginning 1274' from DER, 477' left of centerline, up to 73' AGL/76' MSL.

## NEW YORK, NY (CON'T)

### JOHN F KENNEDY INTL (JFK) (CON'T)

**Rwy 13L**, sign and lights beginning 2' from DER, 2' right of centerline, up to 3' AGL/14' MSL. Lights 11' from DER, on centerline, 2' AGL/13' MSL. Sign, electrical equipment, and lights beginning 11' from DER, 3' left of centerline, up to 3' AGL/14' MSL. Pole and sign beginning 254' from DER, 523' right of centerline, up to 9' AGL/20' MSL. Rod 1119' from DER, 140' left of centerline, 39' AGL/58' MSL. Trees beginning 1774' from DER, 1' right of centerline, up to 72' AGL/91' MSL. **Rwy 13R**, lights beginning 4' from DER, 40' right of centerline, up to 3' AGL/14' MSL. Lights beginning 4' from DER, 15' left of centerline, up to 3' AGL/14' MSL. Buildings, tower, and glideslope antenna beginning 418' from DER, 404' left of centerline, up to 39' AGL/58' MSL. Transmission towers beginning 4749' from DER, 1385' right of centerline, up to 139' AGL/140' MSL. **Rwy 22L**, lights beginning 3' from DER, 4' left of centerline, up to 2' AGL/13' MSL. Lights beginning 4' from DER, 5' right of centerline, up to 2' AGL/13' MSL. Lights 5' from DER, on centerline, 2' AGL/13' MSL. Trees beginning 433' from DER, 578' left of centerline, up to 27' AGL/31' MSL. **Rwy 22R**, lights beginning abeam DER, 55' right of centerline, up to 2' AGL/13' MSL. Fence, lights, and bushes beginning abeam DER, 54' left of centerline, up to 8' AGL/19' MSL. **Rwy 31L**, lights beginning 9' from DER, 80' right of centerline, up to 3' AGL/14' MSL. Lights beginning 10' from DER, 80' left of centerline, up to 2' AGL/13' MSL. Trees 2075' from DER, 435' left of centerline, up to 87' AGL/91' MSL. **Rwy 31R**, lights beginning 8' from DER, 3' left of centerline, up to 2' AGL/13' MSL. Lights 10' from DER, on centerline, 2' AGL/13' MSL. Lights beginning 10' from DER, 3' right of centerline, up to 2' AGL/13' MSL. Electrical system, electrical box, and lights beginning 101' from DER, on centerline, and left and right of centerline, up to 7' AGL/18' MSL. Approach lights beginning 200' from DER, on centerline, up to 9' AGL/27' MSL. Fences, lights, and poles beginning 146' from DER, 115' left of centerline, up to 19' AGL/30' MSL. Lights and trees beginning 553' from DER, 191' right of centerline, up to 34' AGL/48' MSL. Lights and poles beginning 1443' from DER, 334' left of centerline, up to 55' AGL/67' MSL. Pole 2162' from DER, 562' right of centerline, 54' AGL/66' MSL. Antenna 3916' from DER, 1550' right of centerline, 111' AGL/130' MSL.

01 FEB 2018 to 01 MAR 2018

01 FEB 2018 to 01 MAR 2018

# TAKEOFF MINIMUMS, (OBSTACLE) DEPARTURE PROCEDURES, AND DIVERSE VECTOR AREA (RADAR VECTORS)

18032

NE-2

# TAKEOFF MINIMUMS, (OBSTACLE) DEPARTURE PROCEDURES, AND DIVERSE VECTOR AREA (RADAR VECTORS)

18032

## NEW YORK, NY (CON'T)

### LAGUARDIA (LGA)

#### TAKEOFF MINIMUMS AND (OBSTACLE) DEPARTURE PROCEDURES AMDT 10 15288 (FAA)

TAKEOFF MINIMUMS: **Rwy 13**, 400-2¼ or std. w/min. climb of 280' per NM to 500. **Rwy 22**, 300-2¼ or std. w/min. climb of 210' per NM to 400, or alternatively, with standard takeoff minimums and a normal 200' per NM climb gradient, takeoff must occur no later than 1100' prior to DER. **Rwy 31**, 300-1¼ or std. w/min. climb of 330' per NM to 500.

DEPARTURE PROCEDURE: **Rwy 4**, climb heading 044° to 1000 before proceeding on course. **Rwy 13**, climb heading 134° to 1000 before proceeding westbound.

**Rwy 22**, climb heading 224° to 2200 before proceeding westbound (RADAR required). **Rwy 31**, climb heading 314° to 1700 before proceeding westbound.

TAKEOFF OBSTACLE NOTES: **Rwy 13**, localizer 392' from DER, on centerline, 18' AGL/19' MSL. Stack, fences, and buildings beginning 97' from DER, 171' left of centerline, up to 83' AGL/103' MSL. Fences, buildings, and trees beginning 28' from DER, 415' right of centerline, up to 21' AGL/22' MSL. Stack 4934' from DER, 1513' left of centerline, 172' AGL/181' MSL. Building 1.9 NM from DER, 758' right of centerline, 280' AGL/345' MSL. **Rwy 22**, building 1278' from DER, 169' left of centerline, 48' AGL/71' MSL. Buildings and trees beginning 165' from DER, 150' left of centerline, up to 72' AGL/101' MSL. Blast fence, fence, stack on building, NAVAID, and trees beginning 109' from DER, 138' right of centerline, up to 55' AGL/104' MSL. Tower 1.8 NM from DER, 566' right of centerline, 222' AGL/302' MSL. **Rwy 31**, stack 1.2 NM from DER, 2015' left of centerline, 250' AGL/268' MSL.

### LONG ISLAND MAC ARTHUR (ISP)

#### TAKEOFF MINIMUMS AND (OBSTACLE) DEPARTURE PROCEDURES AMDT 5 11181 (FAA)

TAKEOFF OBSTACLE NOTES: **Rwy 6**, trees beginning 611' from DER, 191' right of centerline, up to 76' AGL/186' MSL. Trees beginning 1391' from DER, 76' left of centerline, up to 79' AGL/189' MSL. Pole 2458' from DER, 1127' left of centerline, 65' AGL/175' MSL. **Rwy 10**, trees beginning 950' from DER, 259' right of centerline, up to 49' AGL/132' MSL. Trees beginning 276' from DER, 263' left of centerline, up to 54' AGL/139' MSL. Antenna on pole 1141' from DER, 455' left of centerline, 48' AGL/133' MSL. **Rwy 15L**, trees beginning 706' from DER, 271' right of centerline, up to 56' AGL/136' MSL. Trees beginning 1134' from DER, 214' left of centerline, up to 50' AGL/132' MSL. **Rwy 15R**, trees beginning 1267' from DER, 68' left of centerline, up to 56' AGL/136' MSL. **Rwy 24**, pole 788' from DER, 656' right of centerline, 40' AGL/120' MSL. **Rwy 28**, tree 643' from DER, 391' right of centerline, 36' AGL/126' MSL. Pole 918' from DER, 367' right of centerline, 30' AGL/118' MSL. Light pole 991' from DER, 244' right of centerline, 27' AGL/117' MSL. Rod 822' from DER, 442' left of centerline, 36' AGL/121' MSL. Trees beginning 1101' from DER, 280' left of centerline, up to 48' AGL/128' MSL. Pole 1254' from DER, 89' left of centerline, 29' AGL/124' MSL. **Rwy 33L**, trees beginning 37' from DER, 5' right of centerline, up to 80' AGL/185' MSL. Trees beginning 180' from DER, 27' left of centerline, up to 83' AGL/188' MSL. Poles beginning 699' from DER, 505' left of centerline, up to 40' AGL/140' MSL. Tower 1528' from DER, 387' left of centerline, 61' AGL/164' MSL. Post 459' from DER, 251' left of centerline, 11' AGL/111' MSL.

## NEW YORK, NY (CON'T)

### LONG ISLAND MAC ARTHUR (ISP) (CON'T)

**Rwy 33R**, trees beginning 1025' from DER, 273' right of centerline, up to 45' AGL/135' MSL. Tower 2996' from DER, 79' right of centerline, 108' AGL/210' MSL. Obstruction light on GS 325' from DER, 484' right of centerline, 28' AGL/118' MSL. Trees beginning 789' from DER, 266' left of centerline, up to 48' AGL/133' MSL. Obstruction light WSK 726' from DER, 583' left of centerline, 29' AGL/114' MSL.

## STEWART INTL (SWF)

#### TAKEOFF MINIMUMS AND (OBSTACLE) DEPARTURE PROCEDURES AMDT 6A 16259 (FAA)

TAKEOFF MINIMUMS: **Rwy 16**, std. w/ min. climb of 255' per NM to 2100 or 1500-2½ for climb in visual conditions. **Rwy 27**, 300-1 or std. w/ min. climb of 400' per NM to 800. **Rwy 34**, 300-1 or std. w/ min. climb of 503' per NM to 800.

DEPARTURE PROCEDURE: **Rwy 9**, climb heading 087° to 2100 before proceeding on course. **Rwy 16**, climb heading 161° to 1800 before proceeding on course. For climb in visual conditions: cross Stewart Intl airport at or above 1800 MSL before proceeding on course. When executing VCOA, notify ATC prior to departure. **Rwy 27**, climb heading 272° to 1200 before turning south.

TAKEOFF OBSTACLE NOTES: **Rwy 9**, trees beginning 68' from DER, 132' left of centerline, up to 43' AGL/487' MSL. Trees beginning 727' from DER, 23' left of centerline, up to 95' AGL/546' MSL. Trees beginning 955' from DER, 21' right of centerline, up to 86' AGL/535' MSL. Trees beginning 2692' from DER, 659' left of centerline, up to 78' AGL/587' MSL. **Rwy 16**, trees beginning 785' from DER, 462' left of centerline, up to 70' AGL/466' MSL. Trees beginning 1255' from DER, 562' right of centerline, up to 109' AGL/492' MSL. **Rwy 27**, airport sign 10' from DER, 54' left of centerline, 2' AGL/491' MSL. Building 694' from DER, 2' right of centerline, 16' AGL/509' MSL. Terrain, DME antenna, and trees beginning 599' from DER, 246' left of centerline, up to 38' AGL/537' MSL. Trees beginning 2259' from DER, 197' left of centerline, up to 101' AGL/640' MSL. Trees 3454' from DER, 1400' left of centerline, up to 118' AGL/667' MSL. Trees beginning 4122' from DER, 1441' right of centerline, up to 108' AGL/627' MSL. **Rwy 34**, terrain beginning 77' from DER, 250' right of centerline, up to 475' MSL. Poles and trees beginning 1094' from DER, 157' right of centerline, up to 72' AGL/571' MSL. Trees 1045' from DER, 597' left of centerline, up to 83' AGL/542' MSL. Trees beginning 1773' from DER, 49' left of centerline, up to 98' AGL/587' MSL. Trees beginning 2422' from DER, 70' right of centerline, up to 72' AGL/601' MSL. Trees 2473' from DER, 910' right of centerline, up to 70' AGL/629' MSL. Trees 3207' from DER, 1345' right of centerline, up to 78' AGL/657' MSL. Trees beginning 4426' from DER, 244' left of centerline, up to 72' AGL/611' MSL. Trees 5527' from DER, 83' right of centerline, up to 83' AGL/612' MSL.

## WEST 30TH ST (JRA)

#### TAKEOFF MINIMUMS AND (OBSTACLE) DEPARTURE PROCEDURES AMDT 1 17117 (FAA)

DEPARTURE PROCEDURE: Use JEDIL DEPARTURE.

# TAKEOFF MINIMUMS, (OBSTACLE) DEPARTURE PROCEDURES, AND DIVERSE VECTOR AREA (RADAR VECTORS)

18032

NE-2

01 FEB 2018 to 01 MAR 2018

01 FEB 2018 to 01 MAR 2018

# TAKEOFF MINIMUMS, (OBSTACLE) DEPARTURE PROCEDURES, AND DIVERSE VECTOR AREA (RADAR VECTORS)

18032

## NEWARK, NJ

NEWARK LIBERTY INTL (EWR)  
TAKEOFF MINIMUMS AND (OBSTACLE)  
DEPARTURE PROCEDURES  
AMDT 5 10042 (FAA)

TAKEOFF MINIMUMS: **Rwy 4L**, std. w/ min. climb of 383' per NM to 2500. **Rwy 4R**, std. w/ min. climb of 375' per NM to 2500. **Rwy 11**, std. w/ min. climb of 361' per NM to 2500. **Rwy 22L**, std. w/ min. climb of 337' per NM to 2500. **Rwy 22R**, std. w/ min. climb of 331' per NM to 2500. **Rwy 29**, 400-2 or std. w/ min. climb of 444' per NM to 500.

DEPARTURE PROCEDURE: **Rwy 4R**, climb heading 039° to 500 before turning right. **Rwy 22L**, climb heading 219° to 500 before turning left. **Rwy 29**, climb heading 288° to 800 before turning Eastbound.

TAKEOFF OBSTACLE NOTES: **Rwy 4L**, tower, light, and multiple trees beginning 211' from DER, 198' left of centerline, up to 70' AGL/89' MSL. DME antenna and pole beginning 881' from DER, 418' right of centerline, up to 121' AGL/131' MSL. **Rwy 4R**, DME antenna, tree, and multiple towers beginning 530' from DER, 477' left of centerline, up to 61' AGL/82' MSL. Tower, sign, tree, multiple buildings and poles beginning 1134' from DER, 153' right of centerline, up to 121' AGL/131' MSL. **Rwy 11**, pole, tree, and multiple signs beginning 6' from DER, 158' right of centerline, up to 31' AGL/50' MSL. Sign, tree, road, fence, building, and multiple poles beginning 82' from DER, 2' left of centerline, up to 49' AGL/68' MSL. **Rwy 22L**, pole 8' from DER, 261' left of centerline, 7' AGL/16' MSL. **Rwy 22R**, light and multiple trees beginning 1829' from DER, 307' right of centerline, up to 55' AGL/69' MSL. Building 1.4 NM from DER, 1872' left of centerline, 200' AGL/227' MSL. **Rwy 29**, multiple poles, trees, signs and buildings beginning 209' from DER, 242' left of centerline, up to 110' AGL/120' MSL. Tree multiple signs and poles beginning 689' from DER, 66' right of centerline, up to 273' AGL/358' MSL. Building 6029' from DER, 1624' right of centerline, 273' AGL/357' MSL. Building 1.5 NM from DER, 2071' right of centerline, 202' AGL/328' MSL.

## NIAGARA FALLS, NY

NIAGARA FALLS INTL (IAG)  
TAKEOFF MINIMUMS AND (OBSTACLE)  
DEPARTURE PROCEDURES  
AMDT 2A 07298 (FAA)

TAKEOFF MINIMUMS: **Rwys 10L, 10R, 24**, 300-1 or std. with a min. climb of 300' per NM to 1700.

DEPARTURE PROCEDURE: **Rwy 6**, climb heading 060° to 1200 before proceeding on course. **Rwys 10L, 10R, 24** climb runway heading to 1700 before proceeding on course. **Rwys 28L, 28R**, climb heading 280° to 1200 before proceeding on course.

TAKEOFF OBSTACLE NOTES: **Rwy 6**, tree 1737' from DER, 308' left of centerline, 60' AGL/647' MSL. **Rwy 28L**, trees beginning 1668' from DER, 244' right of centerline, up to 74' AGL/654' MSL. Trees beginning 1337' from DER, 62' left of centerline, up to 63' AGL/646' MSL. Bush 625' from DER, 172' right of centerline, 26' AGL/611' MSL. **Rwy 28R**, trees beginning 866' from DER, 105' right of centerline, up to 100' AGL/690' MSL. Trees beginning 837' from DER, 321' left of centerline, up to 87' AGL/667' MSL.

## NORWICH, NY

LT WARREN EATON (OIC)  
TAKEOFF MINIMUMS AND (OBSTACLE)  
DEPARTURE PROCEDURES  
AMDT 4 15288 (FAA)

TAKEOFF MINIMUMS: **Rwy 1**, 700-3 w/min. climb of 325' to 2300 or std. w/min. climb of 495' per NM to 1900 or 1600-3 for climb in visual conditions. **Rwy 19**, 700-3 w/ min. climb of 270' per NM to 2100 or std. w/min. climb of 804' per NM to 1900 or 1600-3 for climb in visual conditions.

DEPARTURE PROCEDURE: **Rwy 1**, climb heading 014° to 2200 before proceeding on course. **Rwy 19**, climb heading 194° to 2100 before proceeding on course.

VCOA: **Rwys 1, 19**, obtain ATC approval for climb in visual conditions when requesting IFR clearance. Climb in visual conditions to cross LT Warren Eaton airport at or above 2500 before proceeding on course.

TAKEOFF OBSTACLE NOTES: **Rwy 1**, vehicles on roadway beginning 22' from DER, 128' left of centerline, up to 15' AGL/1034' MSL. Trees beginning 96' from DER, 303' left of centerline, up to 44' AGL/1063' MSL. Trees beginning 339' from DER, 211' right of centerline, up to 63' AGL/1082' MSL. Rising terrain and trees beginning 1005' from DER, 10' left of centerline, up to 91' AGL/1159' MSL. Trees and poles beginning 492' from DER, 24' right of centerline, up to 91' AGL/1099' MSL. Rising terrain and trees beginning 5954' from DER, 1482' right of centerline, up to 88' AGL/1685' MSL. Trees and buildings beginning 1.9 miles from DER, 1920' right of centerline, up to 88' AGL/1669' MSL. Rising terrain and trees beginning 2 NM from DER, 1981' right of centerline, up to 84' AGL/1685' MSL. Trees beginning 2.6 NM from DER, 2230' right of centerline, up to 110' AGL/1651' MSL. **Rwy 19**, trees and poles beginning 49' from DER, 30' left of centerline, up to 59' AGL/1060' MSL. Fence 77' from DER, 476' right of centerline, 9' AGL/1025' MSL. Trees and poles beginning 387' from DER, 8' right of centerline, up to 64' AGL/1065' MSL. Trees, poles and buildings beginning 1057' from DER, 78' right of centerline, up to 76' AGL/1197' MSL. Trees beginning 1571' from DER, 6' left of centerline, up to 87' AGL/1088' MSL. Vehicles on roadway beginning 1692' from DER, 448' right of centerline, up to 17' AGL/1076' MSL. Rising terrain, trees and buildings beginning 2126' from DER, 75' right of centerline, up to 67' AGL/1273' MSL. Trees 2370' from DER, 982' right of centerline, up to 100' AGL/1252' MSL. Trees beginning 1.6 NM from DER, 1188' right of centerline, up to 101' AGL/1626' MSL. Trees beginning 2.3 NM from DER, 3561' right of centerline, up to 85' AGL/1626' MSL. Trees beginning 2.8 NM from DER, 1188' right of centerline, up to 120' AGL/1581' MSL. Rising terrain and trees beginning 3.2 NM from DER, 2666' right of centerline, up to 98' AGL/1819' MSL.

01 FEB 2018 to 01 MAR 2018

01 FEB 2018 to 01 MAR 2018

# TAKEOFF MINIMUMS, (OBSTACLE) DEPARTURE PROCEDURES, AND DIVERSE VECTOR AREA (RADAR VECTORS)

18032

NE-2

# TAKEOFF MINIMUMS, (OBSTACLE) DEPARTURE PROCEDURES, AND DIVERSE VECTOR AREA (RADAR VECTORS)

18032

## OGDENSBURG, NY

### OGDENSBURG INTL (OGS)

#### TAKEOFF MINIMUMS AND (OBSTACLE) DEPARTURE PROCEDURES

AMDT 2 16259 (FAA)

TAKEOFF OBSTACLE NOTES: **Rwy 09**, tree 314' from DER, 483' left of centerline, 37' AGL/341' MSL. Trees, beginning 878' from DER, 90' left of centerline, up to 58' AGL/373' MSL. Pole 1048' from DER, 741' right of centerline, 39' AGL/344' MSL. Trees, beginning 1153' from DER, 147' right of centerline, up to 59' AGL/366' MSL. **Rwy 27**, sign 6' from DER, 394' left of centerline, 3' AGL/288' MSL. Vegetation, terrain, beginning 47' from DER, 313' right of centerline, up to 2' AGL/292' MSL. Terrain 72' from DER, 352' right of centerline, 289' MSL. Bldg 583' from DER, 474' left of centerline, 47' AGL/329' MSL. Trees, beginning 698' from DER, 181' left of centerline, up to 65' AGL/337' MSL. Tree 997' from DER, 532' right of centerline, 60' AGL/341' MSL. Trees, beginning 1015' from DER, 62' right of centerline, up to 69' AGL/350' MSL. Trees, beginning 1216' from DER, 56' right of centerline, up to 95' AGL/376' MSL. Trees, beginning 1251' from DER, 33' left of centerline, up to 75' AGL/353' MSL. Tree 2345' from DER, 150' left of centerline, 354' MSL. Tree 4155' from DER, 269' left of centerline, 390' MSL.

## OLD BRIDGE, NJ

### OLD BRIDGE (3N6)

#### TAKEOFF MINIMUMS AND (OBSTACLE) DEPARTURE PROCEDURES

AMDT 1 09239 (FAA)

TAKEOFF MINIMUMS: **Rwy 24**, 300-2½ or std. w/ min. climb of 223' per NM to 400.

TAKEOFF OBSTACLE NOTES: **Rwy 6**, trees beginning 49' from DER, 4' left and right of centerline, up to 100' AGL/199' MSL. **Rwy 24**, trees beginning 47' from DER, 46' left and right of centerline, up to 100' AGL/299' MSL.

## OLEAN, NY

### CATTARAUGUS COUNTY-OLEAN (OLE)

#### TAKEOFF MINIMUMS AND (OBSTACLE) DEPARTURE PROCEDURES

AMDT 3 14009 (FAA)

TAKEOFF MINIMUMS: **Rwy 16**, 200-1 or std. with min. climb of 328' per NM to 2400. **Rwy 34**, 200-1 or std. with min. climb of 366' per NM to 2400.

TAKEOFF OBSTACLE NOTES: **Rwy 4**, trees beginning 10' from DER, 74' left of centerline, up to 69' AGL/2186' MSL. Trees beginning 12' from DER, 34' right of centerline, up to 57' AGL/2140' MSL. **Rwy 16**, trees beginning 95' from DER, 374' left of centerline, up to 65' AGL/2264' MSL. Trees beginning 35' from DER, 387' right of centerline, up to 71' AGL/2270' MSL. **Rwy 22**, trees beginning 18' from DER, 26' left of centerline, up to 88' AGL/2185' MSL. Trees beginning 31' from DER, 51' right of centerline, up to 88' AGL/2167' MSL. **Rwy 34**, trees beginning 191' from DER, 122' right of centerline, up to 71' AGL/2221' MSL.

## ONEONTA, NY

### ONEONTA MUNI (N66)

#### TAKEOFF MINIMUMS AND (OBSTACLE) DEPARTURE PROCEDURES

AMDT 1 15288 (FAA)

TAKEOFF MINIMUMS: **Rwy 6**, 300-1¼ or std. w/min. climb of 308' per NM to 2000.

TAKEOFF OBSTACLE NOTES: **Rwy 6**, pole 1' from DER, 319' left of centerline, 16' AGL/1775' MSL. Fence 207' from DER, 267' left of centerline, 12' AGL/1765' MSL. Tree 182' from DER, 401' right of centerline, 85' AGL/1787' MSL. Trees beginning 392' from DER, 105' left of centerline, up to 85' AGL/1788' MSL. Trees beginning 410' from DER, 434' right of centerline, up to 85' AGL/1798' MSL. Trees beginning 1678' from DER, 354' left of centerline, up to 85' AGL/1844' MSL. Trees beginning 1675' from DER, 188' right of centerline, up to 85' AGL/1829' MSL. Trees beginning 2703' from DER, 190' left of centerline, up to 85' AGL/1870' MSL. Trees beginning 2385' from DER, 450' right of centerline, up to 85' AGL/1852' MSL. Trees beginning 4715' from DER, 152' right of centerline, up to 85' AGL/1940' MSL. **Rwy 24**, bush 196' from DER, 203' left of centerline, 6' AGL/1775' MSL. Road 209' from DER, 373' left of centerline, 1779' MSL. Fence 312' from DER, 343' left of centerline, 2' AGL/1771' MSL. Trees beginning 83' from DER, 396' left of centerline, up to 90' AGL/1859' MSL. Trees beginning 53' from DER, 173' right of centerline, up to 90' AGL/1846' MSL.

## PEDRICKTOWN, NJ

### SPITFIRE AERODROME (7N7)

#### TAKEOFF MINIMUMS AND (OBSTACLE) DEPARTURE PROCEDURES

AMDT 1 11293 (FAA)

TAKEOFF MINIMUMS: **Rwy 25**, NA-obstacles.

DEPARTURE PROCEDURE: **Rwy 7**, climb heading 074° to 800 before turning right.

TAKEOFF OBSTACLE NOTES: **Rwy 7**, trees beginning at DER, 132' left of centerline, up to 100' AGL/144' MSL. Trees beginning 3288' from DER, 962' right of centerline, up to 100' AGL/149' MSL.

01 FEB 2018 to 01 MAR 2018

01 FEB 2018 to 01 MAR 2018

# TAKEOFF MINIMUMS, (OBSTACLE) DEPARTURE PROCEDURES, AND DIVERSE VECTOR AREA (RADAR VECTORS)

18032

NE-2

# TAKEOFF MINIMUMS, (OBSTACLE) DEPARTURE PROCEDURES, AND DIVERSE VECTOR AREA (RADAR VECTORS)

18032

## PENN YAN, NY

### PENN YAN (PEO)

#### TAKEOFF MINIMUMS AND (OBSTACLE) DEPARTURE PROCEDURES

AMDT 4 12208 (FAA)

TAKEOFF MINIMUMS: **Rwy 19**, std. w/min. climb of 275' per NM to 1900 or 1100-2½ for climb in visual conditions. **Rwy 28**, std. w/min. climb of 360' per NM to 1800 or

1100-2½ for climb in visual conditions.

TAKEOFF MINIMUMS: **Rwy 1**, climb heading 008° to 1500 before turning left. **Rwy 19**, for climb in visual conditions cross Penn Yan airport at or above 1900 before proceeding on course. When executing VCOA, notify ATC prior to departure. **Rwy 28**, for climb in visual conditions cross Penn Yan airport at or above 1900 before proceeding on course. When executing VCOA, notify ATC prior to departure.

TAKEOFF OBSTACLE NOTES: **Rwy 1**, Trees 74' from DER, 246' right of centerline, up to 100' AGL/1019' MSL. Trees 571' from DER, 18' left of centerline, up to 100' AGL/999' MSL. Aircraft on taxiway 35' from DER, 300' left of centerline, up to 23' AGL/942' MSL. **Rwy 19**, Trees 1172' from DER, 347' right of centerline, up to 100' AGL/1102' MSL. Trees 2309' from DER, 476' left of centerline, up to 100' AGL/1120' MSL. Aircraft on taxiway 24' from DER, 261' right of centerline, up to 23' AGL/1022' MSL. **Rwy 10**, Trees 18' from DER, 245' right of centerline, up to 100' AGL/1039' MSL. Trees 43' from DER, 78' left of centerline, up to 100' AGL/999' MSL. Fence 28' from DER, on centerline, up to 8' AGL/907' MSL. Berm 25' from DER, on centerline, up to 10' AGL/909' MSL. Vehicle on road 33' from DER, 183' right of centerline, up to 15' AGL/914' MSL. Vehicle on road 156' from DER, 6' left of centerline, up to 15' AGL/914' MSL. **Rwy 28**, Trees 111' from DER, 15' right of centerline, up to 100' AGL/939' MSL. Trees 192' from DER, 59' left of centerline, up to 100' AGL/959' MSL. Fence 16' from DER, on centerline, up to 8' AGL/867' MSL. Vehicle on ramp 20' from DER, on centerline, up to 15' AGL/874' MSL. Hangar 76' from DER, 63' right of centerline, up to 30' AGL/869' MSL.

## PISECO, NY

### PISECO (K09)

#### TAKEOFF MINIMUMS AND (OBSTACLE) DEPARTURE PROCEDURES

ORIG 12208 (FAA)

TAKEOFF MINIMUMS: **Rwy 4**, std. w/min. climb of 539' per NM to 2800 or 600-3 w/min. climb of 316' per NM to 4500 or 2000-3 for climb in visual conditions. **Rwy 22**, 1100-3 w/min. climb of 473' per NM to 3100 or 2000 -3 for climb in visual conditions.

DEPARTURE PROCEDURE: **Rwy 4**, climb heading 045° to 4500 before turning on course, or for climb in visual conditions cross Piseco airport at or above 3600 before proceeding on course. When executing VCOA, notify ATC prior to departure. **Rwy 22**, climb heading 225° to 3500 before turning on course, or for climb in visual conditions cross Piseco airport at or above 3600 before proceeding on course. When executing VCOA, notify ATC prior to departure.

TAKEOFF OBSTACLE NOTES: **Rwy 4**, trees 343' from DER, 192' right of centerline, up to 100' AGL/2244' MSL. Trees 1.8 NM from DER, 2104' left of centerline, up to 100' AGL/2500' MSL. **Rwy 22**, trees 4152' from DER, 1433' right of centerline, up to 100' AGL/2520' MSL.

## PITTSTOWN, NJ

### ALEXANDRIA (N85)

#### TAKEOFF MINIMUMS AND (OBSTACLE) DEPARTURE PROCEDURES

AMDT 2 14149 (FAA)

TAKEOFF MINIMUMS: **Rwy 8**, 400-1¼ or std. w/min. climb of 479' per NM to 1000. **Rwy 31**, 400-2¼ or std. w/min. climb of 228' per NM to 900.

TAKEOFF OBSTACLE NOTES: **Rwy 8**, trees beginning 192' from DER, 238' right of centerline, up to 70' AGL/569' MSL. Trees beginning 591' from DER, 279' left of centerline, up to 70' AGL/829' MSL. **Rwy 13**, trees beginning 205' from DER, 347' left of centerline, up to 70' AGL/569' MSL.

## SKY MANOR (N40)

#### TAKEOFF MINIMUMS AND (OBSTACLE) DEPARTURE PROCEDURES

AMDT 2 12152 (FAA)

TAKEOFF OBSTACLE NOTES: **Rwy 7**, vehicles on roadway beginning 38' from DER, 283' left of centerline, up to 15' AGL/574' MSL. Power lines beginning 2008' from DER, left and right of centerline, up to 122' AGL/652' MSL. Trees beginning 2550' from DER, 756' left of centerline, up to 100' AGL/657' MSL. Trees beginning 4763' from DER, 1716' right of centerline, up to 100' AGL/699' MSL. **Rwy 25**, vehicles on roadway beginning 51' from DER, 375' left of centerline, up to 15' AGL/574' MSL. Trees beginning 1965' from DER, 139' right of centerline, up to 100' AGL/679' MSL. Trees beginning 2261' from DER, 961' left of centerline, up to 100' AGL/659' MSL.

## PLATTSBURGH, NY

### PLATTSBURGH INTL (PBG)

#### TAKEOFF MINIMUMS AND (OBSTACLE) DEPARTURE PROCEDURES

DEPARTURE PROCEDURE: **Rwy 17**, climb heading 172° to 2500 before turning on course. **Rwy 35**, climb heading 352° to 2800 before turning on course.

TAKEOFF OBSTACLE NOTES: **Rwy 17**, tree 1844' from DER, 966' right of centerline, 87' AGL/237' MSL. Tree 2289' from DER, 937' left of centerline, 75' AGL/222' MSL. **Rwy 35**, numerous trees beginning 1602' from DER, 501' left of centerline, up to 63' AGL/293' MSL. Tree, 2270' from DER, 944' left of centerline, 104' AGL/334' MSL. Tree 2035' from DER, 1014' right of centerline, 107' AGL/307' MSL.

## POTSDAM, NY

### POTSDAM MUNI/DAMON FLD (PTD)

#### TAKEOFF MINIMUMS AND (OBSTACLE) DEPARTURE PROCEDURES

ORIG 09295 (FAA)

TAKEOFF OBSTACLE NOTES: **Rwy 6**, trees beginning 229' from DER, 122' right of centerline, up to 100' AGL/569' MSL. Trees beginning 926' from DER, 322' left of centerline, up to 100' AGL/579' MSL. **Rwy 24**, trees beginning 776' from DER, 370' right of centerline, up to 100' AGL/559' MSL. Building 549' from DER, 395' left of centerline, 40' AGL/509' MSL. Tree 846' from DER, 471' left of centerline, 100' AGL/559' MSL.

# TAKEOFF MINIMUMS, (OBSTACLE) DEPARTURE PROCEDURES, AND DIVERSE VECTOR AREA (RADAR VECTORS)

18032

NE-2

# TAKEOFF MINIMUMS, (OBSTACLE) DEPARTURE PROCEDURES, AND DIVERSE VECTOR AREA (RADAR VECTORS)

18032

## POUGHKEEPSIE, NY

### HUDSON VALLEY RGNL (POU)

#### TAKEOFF MINIMUMS AND (OBSTACLE)

#### DEPARTURE PROCEDURES

#### AMDT 2A 17173 (FAA)

TAKEOFF MINIMUMS: **Rwy 7, 25, NA** - VFR only. **Rwy 6**, 500-3 w/min. climb of 250' per NM to 1000 or std. w/min. climb of 537' per NM to 800 or 1700-2½ for climb in visual conditions. **Rwy 15**, 400-2¼ or std. w/min. climb of 370' per NM to 700. **Rwy 33**, 300-1½ or std. w/min. climb of 270' per NM to 500.

DEPARTURE PROCEDURE: **Rwy 6**, climb heading 063° to 2000 before proceeding on course. **Rwy 15**, climbing left turn direct IGN VOR/DME to 1400 before proceeding on course. **Rwy 24**, climb heading 243° to 1800 before proceeding on course. **Rwy 33**, climbing right turn direct IGN VOR/DME then on IGN R-070 to 2200 before proceeding on course.

VCOA: **Rwy 6**, obtain ATC approval for VCOA when requesting IFR clearance. Climb in visual conditions to cross Hudson Valley Rgnl Airport at or above 1700 before proceeding on course.

TAKEOFF OBSTACLE NOTES: **Rwy 6**, terrain and fences beginning 92' from DER, 64' right of centerline, up to 9' AGL/166' MSL. Fences beginning 372' from DER, 78' left of centerline, up to 9' AGL/168' MSL. Poles, trees, tower, and antenna beginning 185' from DER, 384' right of centerline, up to 101' AGL/262' MSL. Trees beginning 949' from DER, 86' right of centerline, up to 70' AGL/229' MSL. Terrain and trees beginning 881' from DER, 395' left of centerline, up to 81' AGL/228' MSL. Pole and trees beginning 2419' from DER, 6' left of centerline, up to 97' AGL/306' MSL. Pole, building, and trees beginning 2795' from DER, 16' right of centerline, up to 97' AGL/306' MSL. Trees 2754' from DER, 1232' left of centerline, up to 77' AGL/346' MSL. Transmission tower 2.5 NM from DER, 602' left of centerline, 132' AGL/604' MSL. Trees 2.6 NM from DER, 1482' left of centerline, up to 76' AGL/557' MSL. **Rwy 15**, sign, buildings, poles, and trees beginning 47' from DER, 86' left of centerline, up to 25' AGL/187' MSL. Fence, pole, buildings, and trees beginning 301' from DER, 85' right of centerline, up to 55' AGL/214' MSL. Buildings and trees beginning 107' from DER, 369' right of centerline, up to 65' AGL/224' MSL. Antenna, poles, buildings, and trees beginning 594' from DER, 29' left of centerline, up to 76' AGL/275' MSL. Poles, buildings, and trees beginning 528' from DER, 19' right of centerline, up to 56' AGL/288' MSL. Poles and trees beginning 2687' from DER, 1' left of centerline, up to 56' AGL/315' MSL. Poles, buildings, and trees beginning 3493' from DER, 10' right of centerline, up to 86' AGL/315' MSL. Trees 3393' from DER, 1153' right of centerline, up to 83' AGL/322' MSL. Trees 1.6 NM from DER, 1787' left of centerline, up to 95' AGL/534' MSL. Trees 1.8 NM from DER, 3119' right of centerline, up to 46' AGL/455' MSL. **Rwy 33**, sign 12' from DER, 85' right of centerline, 2' AGL/157' MSL. Pole, buildings, and trees beginning 100' from DER, 316' left of centerline, up to 80' AGL/229' MSL. Trees beginning 255' from DER, 241' right of centerline, up to 74' AGL/233' MSL. Trees beginning 606' from DER, 1' left of centerline, up to 102' AGL/221' MSL. Trees beginning 686' from centerline, 5' right of centerline, up to 111' AGL/230' MSL. Trees Beginning 1598' from DER, 15' left of centerline, up to 98' AGL/307' MSL. Trees beginning 1632' from DER, 18' right of centerline, up to 114' AGL/295' MSL. Trees 4824' from DER, 1742' left of centerline, up to 81' AGL/320' MSL. Tank 1.1 NM from DER, 37' left of centerline, 105' AGL/360' MSL. Trees 1.2 NM from DER, 2094' right of centerline, up to 96' AGL/345' MSL.

## POUGHKEEPSIE, NY (CON'T)

### HUDSON VALLEY RGNL (POU) (CON'T)

**Rwy 24**, vehicles on road and trees beginning 7' from DER, 280' left of centerline, up to 54' AGL/154' MSL. Trees beginning 71' from DER, 180' right of centerline, up to 77' AGL/182' MSL. Trees beginning 706' from DER, 487' left of centerline, up to 78' AGL/227' MSL. Trees beginning 661' from DER, 318' right of centerline, up to 130' AGL/230' MSL. Trees beginning 2072' from DER, 48' left of centerline, up to 112' AGL/265' MSL. Trees beginning 1936' from DER, 42' right of centerline, up to 137' AGL/270' MSL.

## PRINCETON/ROCKY HILL, NJ

### PRINCETON (39N)

#### TAKEOFF MINIMUMS AND (OBSTACLE)

#### DEPARTURE PROCEDURES

#### AMDT 3 14149 (FAA)

TAKEOFF MINIMUMS: **Rwy 10**, 400-2¼ or std. w/min. climb of 310' per NM to 700.

DEPARTURE PROCEDURE: **Rwy 10**, climb heading 102° to 800 before turning left.

TAKEOFF OBSTACLE NOTES: **Rwy 10**, trees beginning 35' from DER, 300' left of centerline, up to 21' AGL/159' MSL. Vehicles on road, buildings, signs, poles, transmission line tower and trees beginning 389' from DER, 3' left of centerline, up to 34' AGL/223' MSL. Tanks and trees beginning 1463' from DER, 19' left of centerline, up to 130' AGL/270' MSL. Towers and trees beginning 1.5 NM from DER, 938' left of centerline, up to 208' AGL/496' MSL. Vehicles on road, buildings, poles and trees beginning 277' from DER, 16' right of centerline, up to 23' AGL/151' MSL. Vehicles on road, buildings, poles and trees beginning 491' from DER, 6' right of centerline, up to 36' AGL/180' MSL. Tree 1.6 NM from DER, 7' right of centerline, 88' AGL/368' MSL. **Rwy 28**, vehicles on road and trees beginning 86' from DER, 104' right of centerline, up to 27' AGL/140' MSL. Trees 315' from DER, 506' right of centerline, 43' AGL/160' MSL. Trees and building beginning 171' from DER, 248' left of centerline, up to 25' AGL/139' MSL. Trees beginning 560' from DER, 73' left of centerline, up to 91' AGL/203' MSL.

01 FEB 2018 to 01 MAR 2018

01 FEB 2018 to 01 MAR 2018

# TAKEOFF MINIMUMS, (OBSTACLE) DEPARTURE PROCEDURES, AND DIVERSE VECTOR AREA (RADAR VECTORS)

18032

NE-2

# TAKEOFF MINIMUMS, (OBSTACLE) DEPARTURE PROCEDURES, AND DIVERSE VECTOR AREA (RADAR VECTORS)

18032

## READINGTON, NJ

### SOLBERG-HUNTERDON (N51)

#### TAKEOFF MINIMUMS AND (OBSTACLE) DEPARTURE PROCEDURES

AMDT 1 09211 (FAA)

TAKEOFF MINIMUMS: **Rwy 31**, std. w/ min. climb of 405' per NM to 1400 or 1300-2½ for climb in visual conditions.

DEPARTURE PROCEDURE: **Rwy 31**, for climb in visual conditions; cross Solberg-Hunterdon airport at or above 1300 before proceeding on course.

TAKEOFF OBSTACLE NOTES: **Rwy 4**, tree 907' from DER, 712' left of centerline, 100' AGL/279' MSL. Trees beginning 431' from DER, 82' right of centerline, up to 100' AGL/279' MSL. **Rwy 13**, tree 47' from DER, 453' left of centerline, 100' AGL/279' MSL. Tree 88' from DER, 178' right of centerline, 100' AGL/279' MSL. **Rwy 22**, tree 185' from DER, 350' left of centerline, 100' AGL/299' MSL. Trees beginning 103' from DER, 95' right of centerline, up to 100' AGL/299' MSL. **Rwy 31**, trees beginning 372' from DER, 40' left of centerline, up to 100' AGL/378' MSL. Tree 257' from DER, 441' right of centerline, 100' AGL/299' MSL.

## ROBBINSVILLE, NJ

### TRENTON-ROBBINSVILLE (N87)

#### TAKEOFF MINIMUMS AND (OBSTACLE) DEPARTURE PROCEDURES

AMDT 2A 15288 (FAA)

TAKEOFF MINIMUMS: **Rwy 29**, 300-1 or std. w/min. climb of 421' per NM to 800.

DEPARTURE PROCEDURE: **Rwy 29**, climb heading 289° to 800 before turning right.

TAKEOFF OBSTACLE NOTES: **Rwy 11**, trees beginning 39' from DER, 267' right of centerline, up to 87' AGL/198' MSL. Vehicles on roadway beginning 49' from DER, left and right of centerline, up to 17' AGL/132' MSL. Trees beginning 105' from DER, left and right of centerline, up to 90' AGL/202' MSL. Building 789' from DER, 521' left of centerline, 32' AGL/148' MSL. Trees beginning 834' from DER, left and right of centerline, up to 120' AGL/259' MSL. Tower 4577' from DER, 1402' right of centerline, 116' AGL/256' MSL. **Rwy 29**, rising terrain, vehicles on roadway and trees beginning 37' from DER, 22' left of centerline, up to 77' AGL/198' MSL. Vehicles on roadway, poles and trees beginning 50' from DER, 5' right of centerline, up to 68' AGL/187' MSL. Rising terrain, poles and trees beginning 757' from DER, 20' right of centerline, up to 97' AGL/230' MSL. Rising terrain, buildings, poles and trees beginning 761' from DER, 12' left of centerline, up to 105' AGL/230' MSL. Towers beginning 4909' from DER, 589' right of centerline, up to 167' AGL/297' MSL.

## ROCHESTER, NY

### GREATER ROCHESTER INTL (ROC)

#### TAKEOFF MINIMUMS AND (OBSTACLE) DEPARTURE PROCEDURES

AMDT 8 14093 (FAA)

TAKEOFF MINIMUMS: **Rwy 7**, 300-1¼ or std. w/min. climb of 206' per NM to 900, or alternatively, with standard takeoff minimums and a normal 200' per NM climb gradient, takeoff must occur no later than 1300' prior to DER. **Rwy 10**, std. w/min. climb of 250' per NM to 900 or 1000-2½ for climb in visual conditions. **Rwy 22**, 400-2% or std. w/min. climb of 240' per NM to 1100.

DEPARTURE PROCEDURE: **Rwy 4**, climb heading 044° to 1200 before turning left. **Rwy 10**, for climb in visual conditions, cross greater Rochester Intl airport at or above 1400 before proceeding on course. When executing VCOA, notify ATC prior to departure.

TAKEOFF OBSTACLE NOTES: **Rwy 4**, tree 2081' from DER, 532' left of centerline, 53' AGL/612' MSL. Tree 3890' from DER, 1119' right of centerline, 100' AGL/659' MSL. Tower 1806' from DER, 817' right of centerline, 60' AGL/611' MSL. **Rwy 7**, dome 1.4 NM from DER, 1164' right of centerline, 213' AGL/756' MSL. Trees beginning 2732' from DER, 426' left of centerline, up to 93' AGL/622' MSL. **Rwy 10**, dome 1.1 NM from DER, 1543' left of centerline, 213' AGL/756' MSL. Trees beginning 743' from DER, 248' left of centerline, up to 100' AGL/636' MSL. Tree beginning 2676' from DER, 112' right of centerline, up to 85' AGL/616' MSL. Pole 950' from DER, 655' right of centerline, 41' AGL/570' MSL. **Rwy 22**, tower 2.2 NM from DER, 3550' right of centerline, 412' AGL/934' MSL. Tree 1997' from DER, 832' right of centerline, up to 63' AGL/587' MSL. Tree 3026' from DER, 935' left of centerline, 105' AGL/621' MSL. **Rwy 25**, transmission line tower 1523' from DER, 819' left of centerline, 61' AGL/592' MSL. Poles beginning 1655' from DER, 330' left of centerline, up to 82' AGL/617' MSL. **Rwy 28**, railroad beginning 326' from DER, 539' right of centerline, 23' AGL/574' MSL. Transmission line towers beginning 1239' from DER, 253' left of centerline, up to 75' AGL/614' MSL. Trees beginning 807' from DER, 148' left of centerline, up to 87' AGL/626' MSL. Trees beginning 887' from DER, 113' right of centerline, up to 91' AGL/632' MSL.

## ROME, NY

### GRIFFISS INTL (RME)

#### TAKEOFF MINIMUMS AND (OBSTACLE) DEPARTURE PROCEDURES

AMDT 1 10098 (FAA)

DEPARTURE PROCEDURE: **Rwy 15**, climb heading 147° to 1000 before turning left. **Rwy 33**, climb heading 327° to 1400 before turning right.

TAKEOFF OBSTACLE NOTES: **Rwy 15**, trees beginning 2306' from DER, 405' left of centerline, up to 92' AGL/590' MSL.

01 FEB 2018 to 01 MAR 2018

01 FEB 2018 to 01 MAR 2018

# TAKEOFF MINIMUMS, (OBSTACLE) DEPARTURE PROCEDURES, AND DIVERSE VECTOR AREA (RADAR VECTORS)

18032

NE-2

**TAKEOFF MINIMUMS, (OBSTACLE) DEPARTURE PROCEDURES, AND  
DIVERSE VECTOR AREA (RADAR VECTORS)**

18032

**SARANAC LAKE, NY**

ADIRONDACK RGNL (SLK)  
TAKEOFF MINIMUMS AND (OBSTACLE)  
DEPARTURE PROCEDURES  
AMDT 7 12264 (FAA)

TAKEOFF MINIMUMS: **Rwy 5**, standard w/ min. climb of 265' per NM to 4300, or 2500-3 for climb in visual conditions. **Rwy 9**, 800-2¼. **Rwy 23**, standard w/ min. climb of 270' per NM to 3100, or 2500-3 for climb in visual conditions.

DEPARTURE PROCEDURE: **Rwy 5**, climb heading 049° to 4300 before proceeding on course. Or for climb in visual conditions: cross Adirondack RGNL airport at or above 4000 before proceeding on course. When executing VCOA, notify ATC prior to departure. **Rwy 9**, climbing left turn heading 079° to intercept SLK VOR/DME R-081 eastbound to 3700, then climbing left turn direct SLK VOR/DME and hold (N, right turns, 159° degrees inbound). Continue climb in hold to depart SLK VOR/DME at or above MEA for route of flight. **Rwy 23**, climb heading 229° to intercept SLK VOR/DME R-232 westbound to 4600 before proceeding on course, or for climb in visual conditions: cross Adirondack RGNL airport at or above 4000 before proceeding on course. When executing VCOA, notify ATC prior to departure. **Rwy 27**, climb heading 273° to 3600 before proceeding on course.

TAKEOFF OBSTACLE NOTES: **Rwy 5**, vehicle on road 178' from DER, left of centerline, up to 15' AGL/1691' MSL. Trees beginning 1421' from DER, left and right of centerline, up to 100' AGL/1756' MSL. **Rwy 9**, terrain 61' from DER, 421' left of centerline, 1643' MSL. Trees and vegetation beginning 100' from DER, left and right of centerline, up to 116' AGL/1789' MSL. Tower 7982' from DER, 1868' right of centerline, 140' AGL/2225' MSL. Tree 11105' from DER, 2564' left of centerline, 100' AGL/1938' MSL. **Rwy 23**, trees beginning 93' from DER, left and right of centerline, up to 100' AGL/1745' MSL. **Rwy 27**, trees and vegetation beginning 109' from DER, left and right of centerline, up to 100' AGL/1756' MSL.

**SARATOGA SPRINGS, NY**

SARATOGA COUNTY (5B2)  
TAKEOFF MINIMUMS AND (OBSTACLE)  
DEPARTURE PROCEDURES  
AMDT 4 13122 (FAA)

TAKEOFF MINIMUMS: **Rwy 32**, std. w/ min. climb of 320' per NM to 2700 or 1500-2½ for climb in visual conditions. DEPARTURE PROCEDURE: **Rwy 5**, climb heading 053° to 1600 before proceeding on course. **Rwy 14**, climb heading 143° to 1100 before proceeding on course. **Rwy 23**, climb heading 233° to 1100 before proceeding on course. **Rwy 32**, for climb in visual conditions, cross Saratoga County Airport at or above 1800 before proceeding on course.

TAKEOFF OBSTACLE NOTES: **Rwy 5**, trees beginning 111' from DER, 521' left of centerline, up to 100' AGL/529' MSL. Trees beginning 138' from DER, 508' right of centerline, up to 100' AGL/539' MSL. Trees beginning 1112' from DER, 571' right of centerline, up to 86' AGL/506' MSL. Trees beginning 1232' from DER, 572' left of centerline, up to 60' AGL/489' MSL. **Rwy 14**, trees beginning 40' from DER, left and right of centerline, up to 100' AGL/529' MSL. Vehicles on road beginning 69' from DER, left and right of centerline, up to 15' AGL/442' MSL. Poles beginning 533' from DER, left and right of centerline, up to 41' AGL/461' MSL. Buildings beginning 624' from DER, left and right of centerline, up to 51' AGL/459' MSL. Flag pole, 774' from DER, 471' left of centerline, 51' AGL/477' MSL. Power transmission lines beginning 1178' from DER, left and right of centerline, up to 42' AGL/474' MSL. **Rwy 23**, trees beginning 197' from DER, 426' right of centerline, up to 100' AGL/530' MSL. Trees beginning 885' from DER, 692' left of centerline, up to 100' AGL/539' MSL. Trees beginning 1002' from DER, 528' left of centerline, up to 100' AGL/530' MSL. Trees beginning 1182' from DER, 576' right of centerline, up to 100' AGL/530' MSL. **Rwy 32**, bushes and trees beginning 7' from DER, left and right of centerline, up to 58' AGL/528' MSL. Building 1158' from DER, 127' left of centerline, up to 41' AGL/461' MSL. Trees beginning 3062' from DER, left and right of centerline, up to 100' AGL/516' MSL. Power transmission towers beginning 10146' from DER, 2895' right of centerline, up to 151' AGL/700' MSL.

01 FEB 2018 to 01 MAR 2018

01 FEB 2018 to 01 MAR 2018

**TAKEOFF MINIMUMS, (OBSTACLE) DEPARTURE PROCEDURES, AND  
DIVERSE VECTOR AREA (RADAR VECTORS)**

18032

NE-2



# TAKEOFF MINIMUMS, (OBSTACLE) DEPARTURE PROCEDURES, AND DIVERSE VECTOR AREA (RADAR VECTORS)

18032

## SCHENECTADY, NY

SCHENECTADY COUNTY (SCH)  
TAKEOFF MINIMUMS AND (OBSTACLE)  
DEPARTURE PROCEDURES  
AMDT 5 14177 (FAA)

TAKEOFF MINIMUMS: **Rwy 28**, std. w/min. climb of 275' per NM to 1900.

DEPARTURE PROCEDURE: **Rwy 22**, climb on heading 235° to 1300 before turning right.

TAKEOFF OBSTACLE NOTES: **Rwy 4**, tank beginning 133' from DER, 191' left of centerline, 130' AGL/505' MSL. Trees beginning 1725' from DER, 530' right of centerline, up to 84' AGL/436' MSL. Trees beginning 1471' from DER, 226' left of centerline, up to 72' AGL/426' MSL. Trees beginning 1727' from DER, on centerline, up to 72' AGL/423' MSL. **Rwy 10**, trees, fence and light support structure beginning 69' from DER, 431' left of centerline, up to 33' AGL/352' MSL. Buildings and trees beginning 1021' from DER, 597' left of centerline, up to 47' AGL/366' MSL. Trees and light support structure beginning 543' from DER, 175' right of centerline, up to 48' AGL/347' MSL. Trees beginning 1177' from DER, 401' left of centerline, up to 60' AGL/369' MSL. Trees beginning 1898' from DER, 977' left of centerline, up to 80' AGL/369' MSL. **Rwy 22**, trees beginning 1215' from DER, 679' left of centerline, up to 80' AGL/366' MSL. **Rwy 28**, trees beginning 20' from DER, 460' left of centerline, up to 101' AGL/420' MSL. Trees beginning 1482' from DER, 595' right of centerline, up to 95' AGL/424' MSL. Trees beginning 1018' from DER, 226' left of centerline, up to 89' AGL/408' MSL. Poles beginning 64' from DER, 335' right of centerline, 32' AGL/361' MSL. Poles beginning 464' from DER, 449' left of centerline, 42' AGL/361' MSL. Trees beginning 377' from DER, 451' right of centerline, up to 28' AGL/357' MSL. Trees beginning 2595' from DER, 480' left of centerline, up to 88' AGL/407' MSL. Buildings and parking lot beginning 218' from DER, 431' right of centerline, up to 18' AGL/347' MSL. Trees beginning 3845' from DER, 1413' right of centerline, up to 80' AGL/439' MSL. Trees beginning 2895' from DER, 243' right of centerline, up to 72' AGL/411' MSL. Trees beginning 2897' from DER, 42' left of centerline, up to 68' AGL/407' MSL. Trees beginning 4023' from DER, 917' right of centerline, up to 83' AGL/432' MSL. Buildings beginning 350' from DER, 425' left of centerline, 20' AGL/339' MSL. Flagpole beginning 590' from DER, 54' right of centerline, 22' AGL/341' MSL. Trees beginning 5450' from DER, 1958' right of centerline, up to 97' AGL/466' MSL.

## SENECA FALLS, NY

FINGER LAKES RGNL (0G7)  
TAKEOFF MINIMUMS AND (OBSTACLE)  
DEPARTURE PROCEDURES  
ORIG-A 14261 (FAA)

TAKEOFF MINIMUMS: **Rwy 1**, 300-2 or std. w/min. climb of 275' per NM to 1000. **Rwys 11, 29** NA-Environmental.

TAKEOFF OBSTACLE NOTES: **Rwy 1**, trees, vehicle on road and tower beginning 401' from DER, 407' right of centerline, up to 306' AGL/756' MSL. Trees and pole beginning 571' from DER, 332' left of centerline, up to 73' AGL/528' MSL. **Rwy 19**, trees and building beginning 238' from DER, 294' right of centerline, up to 68' AGL/557' MSL. Building, trees, poles, bushes and vehicle on road beginning 189' from DER, 270' left of centerline, up to 57' AGL/556' MSL.

## SHIRLEY, NY

BROOKHAVEN (HWV)  
TAKEOFF MINIMUMS AND (OBSTACLE)  
DEPARTURE PROCEDURES  
ORIG 07130 (FAA)

TAKEOFF MINIMUMS: **Rwys 6, 33**, NA-Noise abatement. TAKEOFF OBSTACLE NOTES: **Rwy 15**, trees beginning 173' from DER, 376' right of centerline, up to 60' AGL/124' MSL. Trees beginning 40' from DER, 281' left of centerline, up to 60' AGL/124' MSL. **Rwy 24**, trees beginning 199' from DER, 497' left of centerline, up to 60' AGL/148' MSL. Trees beginning 604' from DER, 597' right of centerline, up to 60' AGL/133' MSL.

## SIDNEY, NY

SIDNEY MUNI (N23)  
TAKEOFF MINIMUMS AND (OBSTACLE)  
DEPARTURE PROCEDURES  
AMDT 5 14149 (FAA)

TAKEOFF MINIMUMS: **Rwy 7**, std. w/min. climb of 340' per NM to 2300 or 1600-3 for climb in visual conditions. **Rwy 25**, 600-2½ w/min. climb of 290' per NM to 2000 or std. w/min. climb of 550' per NM to 1800 or 1600-3 for climb in visual conditions.

DEPARTURE PROCEDURE: **Rwy 7**, climb heading 071° to 2300 before proceeding on course. **Rwy 25**, climb heading 251° to 2000 before proceeding on course. **All runways**, obtain ATC approval for climb in visual conditions when requesting IFR clearance. Climb in visual conditions to cross Sidney Muni airport at or above 2500 before proceeding on course.

TAKEOFF OBSTACLE NOTES: **Rwy 7**, vehicles on roadway beginning 18' from DER, left and right of centerline, up to 17' AGL/1056' MSL. Buildings beginning 28' from DER, 383' right of centerline, up to 37' AGL/1035' MSL. Trees beginning 126' from DER, 341' left of centerline, up to 76' AGL/1077' MSL. Trees and light poles beginning 939' from DER, 84' right of centerline, up to 40' MSL. Wall and trees beginning 2.7 NM from DER, 135' left of centerline, up to 92' AGL/1633' MSL. Trees beginning 2.8 NM from DER, 43' right of centerline, up to 83' MSL. Trees beginning 3 NM from DER, left and right of centerline, up to 116' AGL/1757' MSL. Rising terrain beginning 3.2 NM from DER, 1021' left of centerline, up to 2039' MSL. **Rwy 25**, rising terrain and trees beginning 4' from DER, 193' left of centerline, up to 65' AGL/1066' MSL. Vehicles on roadway and trees beginning 17' from DER, 236' right of centerline, up to 80' AGL/1081' MSL. Trees, vehicles on roadway, power transmission towers and lines beginning 3572' from DER, 94' left of centerline, up to 103' AGL/1413' MSL. Trees and power transmission towers and lines beginning 1.1 NM from DER, 43' right of centerline, up to 118' AGL/1568' MSL. Trees beginning 1.3 NM from DER, 1899' left of centerline, up to 100' AGL/1568' MSL. Wall and trees beginning 1.8 NM from DER, 1766' left of centerline, up to 100' AGL/1339' MSL. Rising terrain beginning 3.1 NM from DER, 5304' right of centerline up to 1739' MSL.

## SKANEATELES, NY

SKANEATELES AERO DROME (6B9)  
TAKEOFF MINIMUMS AND (OBSTACLE)  
DEPARTURE PROCEDURES  
ORIG 81218 (FAA)

TAKEOFF MINIMUMS: **Rwys 10,28**, 300-1.

# TAKEOFF MINIMUMS, (OBSTACLE) DEPARTURE PROCEDURES, AND DIVERSE VECTOR AREA (RADAR VECTORS)

18032

NE-2

01 FEB 2018 to 01 MAR 2018

01 FEB 2018 to 01 MAR 2018

# TAKEOFF MINIMUMS, (OBSTACLE) DEPARTURE PROCEDURES, AND DIVERSE VECTOR AREA (RADAR VECTORS)

18032

## SOMERVILLE, NJ

### SOMERSET (SMQ)

#### TAKEOFF MINIMUMS AND (OBSTACLE) DEPARTURE PROCEDURES

AMDT 3 08353 (FAA)

TAKEOFF MINIMUMS: **Rwys 8, 17, 26, 35**, NA-Environmental. **Rwy 12**, std. w/ min. climb of 400' per NM to 1000 or 700-3 w/ min. climb of 285' per NM to 1400, or 1100-2½ for climb in visual conditions. **Rwy 30**, std. w/ min. climb of 500' per NM to 600 or 300-2 or min. climb of 205' per NM to 1600, or 1100-2½ for climb in visual conditions.

DEPARTURE PROCEDURE: **Rwy 12**, climb heading 122° to 1000 before proceeding on course or for climb in visual conditions cross Somerset Airport at or above 1100 before proceeding on course. **Rwy 30**, climb heading 302° to 1300 before proceeding on course or for climb in visual conditions cross Somerset Airport at or above 1100 before proceeding on course.

TAKEOFF OBSTACLE NOTES: **Rwy 12**, trees beginning at DER, 345' left of centerline, up to 100' AGL/219' MSL. Trees beginning 600' from DER, left to right of centerline, up to 100' AGL/219' MSL. Trees beginning 3188' from DER, left to right of centerline, up to 100' AGL/279' MSL. **Rwy 30**, trees beginning at DER, 85' right of centerline, up to 100' AGL/199' MSL. Trees beginning at DER, 110' left of centerline, up to 99' AGL/199' MSL. Trees beginning 1451' from DER, left to right of centerline, up to 100' AGL/199' MSL. Trees beginning 2748' from DER, 1147' left of centerline, up to 100' AGL/259' MSL.

## SOUTH BETHLEHEM, NY

### SOUTH ALBANY (4B0)

#### TAKEOFF MINIMUMS AND (OBSTACLE) DEPARTURE PROCEDURES

ORIG 09099 (FAA)

TAKEOFF MINIMUMS: **Rwy 1**, 300-1¼ or std. w/ min. climb of 290' per NM to 600. **Rwy 19**, std. w/ min. climb of 415' per NM to 2000 or 1700-1½ for climb in visual conditions.

DEPARTURE PROCEDURE: **Rwy 1**, climb heading 008° to 2000 before proceeding on course. **Rwy 19**, climb via heading 188° to 2000 or for climb in visual conditions; cross South Albany airport at or above 1700 before proceeding on course. Do not exceed 180 knots until crossing South Albany airport on course.

TAKEOFF OBSTACLE NOTES: **Rwy 1**, vehicles on road beginning 315' from DER, left to right of centerline, up to 15' AGL/234' MSL. Vehicles on road 17' from DER, 467' left of centerline, 15' AGL/224' MSL. Trees 523' from DER, 425' right of centerline, up to 100' AGL/299' MSL. Stacks 1.3 NM from DER, 1522' right of centerline, 195' AGL/435' MSL. **Rwy 19**, trains beginning 23' from DER, left and right of centerline, 23' AGL/318' MSL.

## SUSSEX, NJ

### SUSSEX (FWN)

#### TAKEOFF MINIMUMS AND (OBSTACLE) DEPARTURE PROCEDURES

AMDT 3 14149 (FAA)

TAKEOFF MINIMUMS: **Rwy 3**, 700-3 w/min. climb of 315' per NM to 1500 or 1600-3 for climb in visual conditions. **Rwy 21**, 600-3 w/min. climb of 295' per NM to 1300 or 1600-3 for climb in visual conditions.

DEPARTURE PROCEDURE: **Rwy 3**, climb heading 029° to 1300, then climbing right turn to 3000 direct SAX VORTAC before proceeding on course, or for climb in visual conditions cross Sussex airport at or above 1900 before proceeding on course. When executing VCOA, notify ATC prior to departure. **Rwy 21**, climb heading 209° to 1500 before proceeding on course, or for climb in visual conditions cross Sussex airport at or above 1900 before proceeding on course. When executing VCOA, notify ATC prior to departure.

TAKEOFF OBSTACLE NOTES: **Rwy 3**, vehicles on road beginning at DER, 87' left of centerline, crossing centerline from left to right, up to 15' AGL/434' MSL. Building 260' from DER, 120' right of centerline, 25' AGL/444' MSL. Poles and catenaries beginning at DER, 215' left of centerline, crossing centerline from left to right, up to 50' AGL/469' MSL. Tree 105' from DER, 215' left of centerline, 100' AGL/519' MSL. Trees beginning 278' from DER, left and right of centerline, up to 100'/579' MSL. Tower 1.1 NM from DER, 580' right of centerline, 89' AGL/691' MSL. Trees beginning 673' from DER, left and right of centerline, up to 100' AGL/799' MSL. Trees beginning 1.8 NM from DER, left and right of centerline, up to 100' AGL/1022' MSL. **Rwy 21**, hangars beginning at DER, 372' left of centerline, up to 25' AGL/444' MSL. Buildings beginning 237' from DER, 44' left of centerline, up to 100' AGL/444' MSL. Vehicles on roadway beginning 170' from DER, crossing centerline from left to right, up to 15' AGL/454' MSL. Poles beginning 336' from DER, left and right of centerline, up to 50' AGL/489' MSL. Trees beginning 117' from DER, left and right of centerline, up to 100' AGL/519' MSL. Trees beginning 1200' from DER, 805' left of centerline, up to 100' AGL/579' MSL. Trees beginning 4845' from DER, left and right of centerline, up to 100' AGL/759' MSL. Trees beginning 1.4NM from DER, left and right of centerline, up to 100' AGL/1019' MSL.

01 FEB 2018 to 01 MAR 2018

01 FEB 2018 to 01 MAR 2018

# TAKEOFF MINIMUMS, (OBSTACLE) DEPARTURE PROCEDURES, AND DIVERSE VECTOR AREA (RADAR VECTORS)

18032

NE-2

# TAKEOFF MINIMUMS, (OBSTACLE) DEPARTURE PROCEDURES, AND DIVERSE VECTOR AREA (RADAR VECTORS)

18032

## SYRACUSE, NY

SYRACUSE HANCOCK INTL (SYR)  
TAKEOFF MINIMUMS AND (OBSTACLE)  
DEPARTURE PROCEDURES  
AMDT 8 17285 (FAA)

DEPARTURE PROCEDURE: **Rwy 10**, climb heading 100° to 1500 before turning southbound. **Rwy 15**, climb heading 132° to 2400 before turning southbound. **Rwy 28**, climb heading 280° to 1100 before turning southbound. **Rwy 33**, climb heading 327° to 1000 before turning southbound.

TAKEOFF OBSTACLE NOTES: **Rwy 10**, NAVAID 5' from DER, 119' left of centerline, 3' AGL/401' MSL. NAVAID 5' from DER, 119' right of centerline, 3' AGL/401' MSL. NAVAID 6' from DER, on centerline, 2' AGL/402' MSL. Signs beginning 54' from DER, 219' right of centerline, up to 7' AGL/404' MSL. Trees beginning 864' from DER, 618' right of centerline, up to 465' MSL. Trees beginning 1434' from DER, 744' right of centerline, up to 474' MSL. Trees beginning 2396' from DER, 729' right of centerline, up to 487' MSL. Tree 2478' from DER, 804' left of centerline, 87' AGL/472' MSL. Tree 2557' from DER, 1094' right of centerline, 96' AGL/494' MSL. Trees beginning 2700' from DER, 822' right of centerline, up to 497' MSL. **Rwy 15**, tree 255' from DER, 463' right of centerline, 414' MSL. Tree 669' from DER, 606' left of centerline, 466' MSL. Tree 742' from DER, 528' right of centerline, 440' MSL. Tree 764' from DER, 646' right of centerline, 449' MSL. Trees beginning 811' from DER, 270' left of centerline, up to 469' MSL. Trees beginning 1331' from DER, 215' left of centerline, up to 475' MSL. Tree 1853' from DER, 282' right of centerline, 39' AGL/450' MSL. Tree 1997' from DER, 801' right of centerline, 453' MSL. Trees beginning 2562' from DER, 237' right of centerline, up to 479' MSL. Trees beginning 2829' from DER, 61' left of centerline, up to 487' MSL. Trees beginning 2931' from DER, 39' right of centerline, up to 487' MSL. Tree 3026' from DER, 763' left of centerline, 494' MSL. Tree 3172' from DER, 626' left of centerline, 86' AGL/498' MSL. Trees beginning 3197' from DER, 194' left of centerline, up to 504' MSL. Trees beginning 3299' from DER, 196' right of centerline, up to 488' MSL. Tree 3359' from DER, 109' right of centerline, 504' MSL. Trees beginning 3362' from DER, 179' right of centerline, up to 88' AGL/505' MSL. **Rwy 28**, pole 2456' from DER, 949' right of centerline, 85' AGL/497' MSL. **Rwy 33**, trees beginning 749' from DER, 222' right of centerline, up to 466' MSL. Trees beginning 1445' from DER, 313' right of centerline, up to 63' AGL/467' MSL. Trees beginning 1650' from DER, 32' left of centerline, up to 476' MSL. Tree 1712' from DER, 846' right of centerline, 471' MSL. Trees beginning 1770' from DER, 294' right of centerline, up to 71' AGL/475' MSL. Tree 1935' from DER, 609' right of centerline, 476' MSL. Tree 2101' from DER, 963' left of centerline, 484' MSL. Trees beginning 2329' from DER, 849' left of centerline, up to 96' AGL/500' MSL. Tree 3170' from DER, 889' right of centerline, 497' MSL.

## TETERBORO, NJ

TETERBORO (TEB)  
TAKEOFF MINIMUMS AND (OBSTACLE)  
DEPARTURE PROCEDURES  
AMDT 8 14205 (FAA)

TAKEOFF MINIMUMS: **Rwy 1**, 400-2/4 or std. w/min. climb of 294' per NM to 500. **Rwy 6**, 300-1/2 or std. w/ min. climb of 263' per NM to 400. **Rwy 19**, 600-2/4 or std. w/min. climb of 352' per NM to 700. **Rwy 24**, 400-1/4 or std. w/min. climb of 444' per NM to 500.

DEPARTURE PROCEDURE: **Rwy 1**, climbing right turn heading 040° to 900 before proceeding on course.

**Rwy 6**, climbing left turn heading 040° to 900 before proceeding on course. **Rwy 19**, climb heading 195° to 900 then climbing right turn on BWZ VORTAC R-104 to 2000 before proceeding on course. **Rwy 24**, climb heading 240° to 1500 before proceeding on course.

TAKEOFF OBSTACLE NOTES: **Rwy 1**, building, poles, and trees beginning 198' from DER, 147' left of centerline, up to 77' AGL/86' MSL. Building, poles, and trees beginning 906' from DER, 135' right of centerline, up to 65' AGL/74' MSL. Tree 1771' from DER, on centerline, 49' AGL/58' MSL. Buildings and trees beginning 4753' from DER, 127' left of centerline, up to 146' AGL/265' MSL. Building 5903' from DER, 1521' left of centerline, 160' AGL/224' MSL. Buildings beginning 1.5 NM from DER, 320' right of centerline, up to 206' AGL/285' MSL. Buildings beginning 1.8 NM from DER, 752' right of centerline, up to 249' AGL/314' MSL. **Rwy 6**, signs beginning 20' from DER, 308' left of centerline, 1' AGL/8' MSL. Buildings, poles, trees, and sign beginning 26' from DER, 145' right of centerline, up to 44' AGL/53' MSL. Buildings and poles beginning 195' from DER, 297' left of centerline, up to 42' AGL/51' MSL. Vehicles on road beginning 274' from DER, left and right of centerline, up to 15' AGL/23' MSL. Buildings, poles, trees, and signs beginning 434' from DER, 7' left of centerline, up to 104' AGL/115' MSL. Buildings and trees beginning 1216' from DER, 57' right of centerline, up to 100' AGL/139' MSL. Stack 1.2 NM from DER, 654' right of centerline, 230' AGL/240' MSL. **Rwy 19**, vehicles on road beginning 12' from DER, left and right of centerline, up to 15' AGL/21' MSL. Trees beginning 67' from DER, 373' left of centerline, up to 72' AGL/79' MSL. Buildings, fence, poles, and trees beginning 186' from DER, 40' right of centerline, up to 89' AGL/98' MSL. Localizer antenna 598' from DER, on centerline, 29' AGL/34' MSL. Trees beginning 795' from DER, left and right of centerline, up to 88' AGL/109' MSL. Towers and antennas beginning 1.1 NM from DER, 1370' right of centerline, up to 243' AGL/246' MSL. Monuments 1.7 NM from DER, 1331' right of centerline, up to 287' AGL/299' MSL. Towers and antennas beginning 1.9 NM from DER, 1643' right of centerline, up to 500' AGL/510' MSL. **Rwy 24**, structures and trees beginning 26' from DER, 214' left of centerline, up to 67' AGL/76' MSL. Pole and trees beginning 249' from DER, 100' right of centerline, up to 54' AGL/103' MSL. Buildings, poles, sign, and trees beginning 2724' from DER, 536' right of centerline, up to 83' AGL/272' MSL. Trees beginning 5264' from DER, 1915' right of centerline, up to 100' AGL/309' MSL. Trees beginning 1.3 NM from DER, 1744' right of centerline, up to 88' AGL/217' MSL.

01 FEB 2018 to 01 MAR 2018

01 FEB 2018 to 01 MAR 2018

# TAKEOFF MINIMUMS, (OBSTACLE) DEPARTURE PROCEDURES, AND DIVERSE VECTOR AREA (RADAR VECTORS)

18032

NE-2

# TAKEOFF MINIMUMS, (OBSTACLE) DEPARTURE PROCEDURES, AND DIVERSE VECTOR AREA (RADAR VECTORS)

18032

## TICONDEROGA, NY

### TICONDEROGA MUNI (4B6)

TAKEOFF MINIMUMS AND (OBSTACLE)

DEPARTURE PROCEDURES

ORIG 98113 (FAA)

TAKEOFF MINIMUMS: **Rwy 20**, 800-2 or std. with a min. climb of 330' per NM to 1200.DEPARTURE PROCEDURE: **Rwy 2**, climb runway heading to 3800 before proceeding on course.**Rwy 20**, climbing left turn to 2400 via heading 165° before proceeding on course.

## TOMS RIVER, NJ

### OCEAN COUNTY (MJX)

TAKEOFF MINIMUMS AND (OBSTACLE)

DEPARTURE PROCEDURES

AMDT 1A 14093 (FAA)

TAKEOFF OBSTACLE NOTES: **Rwy 6**, trees beginning 67' from DER, 268' left of centerline, up to 44' AGL/109' MSL. Trees beginning 179' from DER, 510' right of centerline, up to 53' AGL/122' MSL. Trees beginning 525' from DER, 1' left of centerline, up to 62' AGL/121' MSL. Trees beginning 766' from DER, 65' right of centerline, up to 67' AGL/146' MSL. **Rwy 24**, terrain 52' from DER, 438' right of centerline, up to 77' MSL. Trees beginning 1078' from DER, 98' left of centerline, up to 24' AGL/108' MSL. Trees beginning 1333' from DER, 494' right of centerline, up to 37' AGL/120' MSL.

## TRENTON, NJ

### TRENTON MERCER (TTN)

TAKEOFF MINIMUMS AND (OBSTACLE)

DEPARTURE PROCEDURES

AMDT 5 13122 (FAA)

TAKEOFF OBSTACLE NOTES: **Rwy 6**, trees beginning 546' from DER, 546' right of centerline, up to 100' AGL/224' MSL. Vehicles on road beginning 719' from DER, left and right of centerline, up to 15' AGL/ 214' MSL. Trees beginning 1068' from DER, 13' right of centerline, up to 100' AGL/275' MSL. Trees beginning 1093' from DER, 290' left of centerline, up to 100' AGL/319' MSL. Trees and poles beginning 1972' from DER, 3' left of centerline, up to 100' AGL/332' MSL. Trees and tower beginning 2115' from DER, 5' right of centerline, up to 100' AGL/ 273' MSL. **Rwy 16**, trees beginning 56' from DER, 375' left of centerline, up to 69' AGL/236' MSL. Railroad cars beginning 415' from DER, left and right of centerline, up to 26' AGL/186' MSL. Trees beginning 582' from DER, 71' right of centerline, up to 68' AGL/228' MSL. Trees beginning 1462' from DER, 127' left of centerline, up to 85' AGL/238' MSL. **Rwy 24**, pole, building and vehicle beginning 41' from DER, 22' left of centerline, up to 32' AGL/185' MSL. Trees beginning 1844' from DER, 279' left of centerline, up to 103' AGL/271' MSL. Trees beginning 3232' from DER, 836' right of centerline, up to 119' AGL/256' MSL. **Rwy 34**, trees beginning 155' from DER, 303' right of centerline, up to 78' AGL/250' MSL. Trees beginning 340' from DER, 333' left of centerline, up to 68' AGL/250' MSL. Trees beginning 1412' from DER, 706' right of centerline, up to 100' AGL/319' MSL.

## VINCENTOWN, NJ

### RED LION (N73)

TAKEOFF MINIMUMS AND (OBSTACLE)

DEPARTURE PROCEDURES

AMDT 1 09071 (FAA)

TAKEOFF OBSTACLE NOTES: **Rwy 5**, trees 1095' from DER, 90' left of centerline, 100' AGL/149' MSL. Trees 1816' from DER, 864' right of centerline, 100' AGL/159' MSL. Trees 2242' from DER, 41' right of centerline, 100' AGL/159' MSL. **Rwy 23**, trees 24' from DER, 373' right of centerline, 100' AGL/150' MSL. Trees 178' from DER, 185' right of centerline, 100' AGL/159' MSL. Trees 85' from DER, 139' right of centerline, 100' AGL/150' MSL.

## VINELAND, NJ

### KROELINGER (29N)

TAKEOFF MINIMUMS AND (OBSTACLE)

DEPARTURE PROCEDURES

AMDT 1 94062 (FAA)

TAKEOFF MINIMUMS: **Rwys 10, 28**, 300-1.

01 FEB 2018 to 01 MAR 2018

01 FEB 2018 to 01 MAR 2018

# TAKEOFF MINIMUMS, (OBSTACLE) DEPARTURE PROCEDURES, AND DIVERSE VECTOR AREA (RADAR VECTORS)

18032

NE-2

# TAKEOFF MINIMUMS, (OBSTACLE) DEPARTURE PROCEDURES, AND DIVERSE VECTOR AREA (RADAR VECTORS)

18032

## WATERTOWN, NY

### WATERTOWN INTL (ART)

#### TAKEOFF MINIMUMS AND (OBSTACLE) DEPARTURE PROCEDURES

AMDT 2 17173 (FAA)

TAKEOFF MINIMUMS: **Rwy 7**, 300-1% or std. w/min. climb of 240' per NM to 600, or alternatively, with standard takeoff minimums and a normal 200' per NM climb gradient, takeoff must occur no later than 2000' prior to DER. **Rwy 10**, 300-1% or std. w/min. climb of 270' per NM to 600.

TAKEOFF OBSTACLE NOTES: **Rwy 7**, road (n) 539' from DER, 532' left of centerline, 341' MSL. Trees beginning 787' from DER, 493' right of centerline, up to 55' AGL/378' MSL. Tree 817' from DER, 408' left of centerline, 43' AGL/363' MSL. Trees beginning 886' from DER, 478' left of centerline, up to 63' AGL/380' MSL. Tree 1024' from DER, 665' right of centerline, 63' AGL/386' MSL. Trees beginning 1092' from DER, 96' right of centerline, up to 387' MSL. Tree 2506' from DER, 248' right of centerline, 81' AGL/399' MSL. Trees beginning 1 NM from DER, 259' left of centerline, up to 100' AGL/509' MSL. Tree 1.3 NM from DER, 680' left of centerline, 100' AGL/559' MSL. **Rwy 10**, road (n) 211' from DER, 526' left of centerline, 345' MSL. Trees beginning 380' from DER, 563' left of centerline, up to 363' MSL. Trees beginning 495' from DER, 396' right of centerline, up to 60' AGL/388' MSL. Tree 1239' from DER, 671' left of centerline, 367' MSL. Tree 1250' from DER, 789' left of centerline, 371' MSL. Trees beginning 1410' from DER, 733' left of centerline, up to 392' MSL. Trees beginning 2011' from DER, 811' right of centerline, up to 389' MSL. Trees beginning 2134' from DER, 913' right of centerline, up to 394' MSL. Trees beginning 2146' from DER, 797' right of centerline, up to 403' MSL. Trees beginning 2439' from DER, 839' right of centerline, up to 404' MSL. Tree 2515' from DER, 905' right of centerline, 407' MSL. Tree 2553' from DER, 1150' right of centerline, 409' MSL. Tree 2568' from DER, 996' right of centerline, 412' MSL. Trees beginning 2652' from DER, 541' right of centerline, up to 414' MSL. Trees beginning 2826' from DER, 635' right of centerline, up to 416' MSL. Trees beginning 2973' from DER, 317' right of centerline, up to 425' MSL. Tree 2991' from DER, 256' left of centerline, 72' AGL/407' MSL. Tree 3034' from DER, 620' left of centerline, 410' MSL. Tree 3051' from DER, 932' left of centerline, 419' MSL. Tree 3982' from DER, 1388' right of centerline, 438' MSL. Trees beginning 4022' from DER, 960' right of centerline, up to 482' MSL. Trees beginning 4382' from DER, 1081' right of centerline, up to 487' MSL. Tree 4382' from DER, 1358' right of centerline, 484' MSL. Trees beginning 4593' from DER, 724' right of centerline, up to 491' MSL. Trees beginning 5068' from DER, 857' right of centerline, up to 515' MSL. Tree 5068' from DER, 1386' right of centerline, 495' MSL. Trees beginning 5174' from DER, 807' right of centerline, up to 520' MSL. Trees beginning 5227' from DER, 767' right of centerline, up to 65' AGL/520' MSL. Tree, pole beginning 5332' from DER, 574' right of centerline, up to 72' AGL/529' MSL. Tree 1.2 NM from DER, 1366' right of centerline, 64' AGL/513' MSL. **Rwy 28**, tree 919' from DER, 356' right of centerline, 42' AGL/341' MSL. Tree 1582' from DER, 786' left of centerline, 66' AGL/359' MSL. Tree 1592' from DER, 331' left of centerline, 66' AGL/360' MSL. Tree 1863' from DER, 988' left of centerline, 75' AGL/370' MSL. Trees beginning 2572' from DER, 871' left of centerline, up to 381' MSL. Trees beginning 2704' from DER, 622' left of centerline, up to 102' AGL/390' MSL.

## WEEDSPORT, NY

### WHITFORDS (B16)

#### TAKEOFF MINIMUMS AND (OBSTACLE) DEPARTURE PROCEDURES

ORIG 96284 (FAA)

TAKEOFF MINIMUMS: **Rwys 1, 10, 19, 28**, 300-1.

## WELLSVILLE, NY

### WELLSVILLE MUNI AIRPORT, TARANTINE FIELD (ELZ)

#### TAKEOFF MINIMUMS AND (OBSTACLE) DEPARTURE PROCEDURES

DEPARTURE PROCEDURE: **Rwys 10, 28**, climb runway heading to 2500 before proceeding on course.

## WEST CREEK, NJ

### EAGLES NEST (31E)

#### TAKEOFF MINIMUMS AND (OBSTACLE) DEPARTURE PROCEDURES

ORIG 15232 (FAA)

TAKEOFF MINIMUMS: **Rwy 14**, 300-1 or std. w/min. climb of 605' per NM to 500.

DEPARTURE PROCEDURE: **Rwy 14**, climb heading 146° to 700 before turning right. **Rwy 32**, climb heading 326° to 700 before turning left.

TAKEOFF OBSTACLE NOTES: **Rwy 14**, numerous trees beginning at DER, 239' left of centerline, up to 100' AGL/149' MSL. Numerous trees beginning 0' from DER, 293' right of centerline, up to 100' AGL/149' MSL. Numerous trees 447' from DER, crossing left to right of centerline, up to 100' AGL/159' MSL. Numerous trees 2871' from DER, 878' left of centerline, up to 100' AGL/169' MSL. Tower 3971' from DER, 239' left of centerline, 235' AGL/269' MSL. **Rwy 32**, numerous trees beginning at DER, 295' right of centerline, up to 100' AGL/149' MSL. Numerous trees beginning 202' from DER, 288' left of centerline, up to 100' AGL/149' MSL. Numerous trees beginning 4655' from DER, 1703' right of centerline, up to 100' AGL/169' MSL.

## WEST MILFORD, NJ

### GREENWOOD LAKE (4N1)

#### TAKEOFF MINIMUMS AND (OBSTACLE) DEPARTURE PROCEDURES

AMDT 2 12040 (FAA)

TAKEOFF MINIMUMS: **Rwy 6**, std. w/min. climb of 260' per NM to 1700; or, 1300 - 2½ for climb in visual conditions. **Rwy 24**, 500 - 2½ for climb in visual conditions.

DEPARTURE PROCEDURE: **Rwy 6**, climb heading 061° to 1700 before proceeding on course, or for climb in visual conditions: cross Greenwood Lake Airport at or above 1900' MSL before proceeding on course. When executing VCOA, notify ATC prior to departure. **Rwy 24**, climb heading 241° to 1800 before proceeding on course, or for climb in visual conditions: cross Greenwood Lake Airport at or above 1900' MSL before proceeding on course. When executing VCOA, notify ATC prior to departure.

TAKEOFF OBSTACLE NOTES: **Rwy 6**, trees beginning 18' from DER, across centerline, up to 100' AGL/1284' MSL. **Rwy 24**, trees beginning 3' from DER, across centerline, up to 100' AGL/1191' MSL.

01 FEB 2018 to 01 MAR 2018

01 FEB 2018 to 01 MAR 2018

# TAKEOFF MINIMUMS, (OBSTACLE) DEPARTURE PROCEDURES, AND DIVERSE VECTOR AREA (RADAR VECTORS)

18032

NE-2

# TAKEOFF MINIMUMS, (OBSTACLE) DEPARTURE PROCEDURES, AND DIVERSE VECTOR AREA (RADAR VECTORS)

18032

## WESTHAMPTON BEACH, NY

FRANCIS S. GABRESKI (FOK)

### TAKEOFF MINIMUMS AND (OBSTACLE) DEPARTURE PROCEDURES AMDT 2 12152 (FAA)

TAKEOFF MINIMUMS: **Rwy 6**, 300-1¼ or std. w/ min. climb of 230' per NM to 400, or alternatively, with standard takeoff minimums and a normal 200' per NM climb gradient, takeoff must occur no later than 2000' prior to DER.

TAKEOFF OBSTACLE NOTES: **Rwy 1**, terrain and trees beginning 6' from DER, 129' left of centerline, up to 33' AGL/107' MSL. Trees beginning 1007' from DER, 677' right of centerline, up to 29' AGL/98' MSL. **Rwy 6**, trees 1285' from DER, 720' left of centerline, up to 36' AGL/105' MSL. Pole 2027' from DER, 987' right of centerline, 85' AGL/161' MSL. Transmission line tower 1.3 NM from DER, 2432' left of centerline, 71' AGL/301' MSL. **Rwy 15**, trees beginning 1053' from DER, 496' left of centerline, up to 17' AGL/79' MSL. Trees beginning 977' from DER, 204' right of centerline, up to 51' AGL/90' MSL. **Rwy 19**, poles, buildings, and trees beginning 270' from DER, 219' left of centerline, up to 57' AGL/88' MSL. Trees 6' from DER, 358' right of centerline, up to 17' AGL/66' MSL. **Rwy 24**, sign, building, and trees beginning 37' from DER, 251' left of centerline, up to 75' AGL/115' MSL. Bushes and trees beginning 6' from DER, 299' right of centerline, up to 12' AGL/61' MSL. **Rwy 33**, terrain beginning 53' from DER, 407' left of centerline, up to 67' MSL. Terrain, runway end identifier light, and trees beginning 52' from DER, 97' right of centerline, up to 29' AGL/103' MSL.

## WHEELER-SACK AAF (KGTB)

FORT DRUM, NY

### TAKEOFF MINIMUMS AND (OBSTACLE) DEPARTURE PROCEDURES AMDT 5, 09239

**Rwy 15**, Standard with minimum climb of 250 ft/NM to 3100.

**Rwy 21**, Standard with minimum climb of 250 ft/NM to 3100.

DEPARTURE PROCEDURE: **Rwy 26**, Climb hdg 263° to 1400 before turning left.

TAKEOFF OBSTACLE NOTES: **Rwy 3**: Trees 100' AGL/ 759' MSL, 2467' from DER, 896' left of centerline. **Rwy 8**: Trees 62' AGL/747' MSL, 441' from DER, 524' right of centerline. Trees 62' AGL/747' MSL, 1887' from DER, 125' right of centerline. Fence line 11' AGL/696' MSL, 314' from DER, 367' right of centerline. **Rwy 15**: Trees 60' AGL/747' MSL, 1402' from DER, 535' left of centerline. **Rwy 26**: Trees 42' AGL/717' MSL, 1293' from DER, 614' right of centerline. Trees 13' AGL/688' MSL, 186' from DER, 463' right of centerline. **Rwy 33**: Trees 47' AGL/710' MSL, 1224' from DER, 609' right of centerline.

## WHITE PLAINS, NY

WESTCHESTER COUNTY (HPN)

### TAKEOFF MINIMUMS AND (OBSTACLE) DEPARTURE PROCEDURES AMDT 8 17173 (FAA)

TAKEOFF MINIMUMS: **Rwy 29**, 300-1½ or std. w/ min. climb of 235' per NM to 700, or alternatively, with standard takeoff minimums and a normal 200' per NM climb gradient, takeoff must occur no later than 2000' prior to DER.

TAKEOFF OBSTACLE NOTES: **Rwy 11**, sign 22' from DER, 176' left of centerline, 3' AGL/390' MSL. Vehicles on road 68' from DER, 167' right of centerline, 390' MSL. Trees beginning 107' from DER, 379' right of centerline, up to 450' MSL. Terrain 140' from DER, 248' left of centerline, 392' MSL. Tree 148' from DER, 511' left of centerline, 472' MSL. Trees beginning 164' from DER, 78' left of centerline, up to 77' AGL/477' MSL. Trees beginning 187' from DER, 378' right of centerline, up to 77' AGL/468' MSL. Trees beginning 379' from DER, 553' right of centerline, up to 99' AGL/482' MSL. Trees beginning 411' from DER, 6' right of centerline, up to 101' AGL/484' MSL. Trees beginning 484' from DER, 12' left of centerline, up to 96' AGL/491' MSL. Tree and building beginning 589' from DER, 98' left of centerline, up to 499' MSL. Tree and building beginning 599' from DER, 33' left of centerline, up to 104' AGL/502' MSL. Tree and building beginning 651' from DER, 3' right of centerline, up to 111' AGL/493' MSL. Trees beginning 703' from DER, 19' left of centerline, up to 507' MSL. Tree, building, and pole beginning 760' from DER, 4' left of centerline, up to 113' AGL/523' MSL. Tree 1083' from DER, 666' left of centerline, 526' MSL. Tree 1099' from DER, 733' left of centerline, 79' AGL/528' MSL. Tree, building, pole, and flagpole beginning 1100' from DER, 26' left of centerline, up to 530' MSL. Trees beginning 1434' from DER, 10' left of centerline, up to 87' AGL/532' MSL.

**Rwy 16**, taxiway light 131' from DER, 499' left of centerline, 1' AGL/384' MSL. Terrain 273' from DER, 515' left of centerline, 387' MSL. Trees beginning 999' from DER, 171' left of centerline, up to 109' AGL/436' MSL. Tree 1096' from DER, 663' right of centerline, 86' AGL/425' MSL. Trees beginning 1098' from DER, 226' right of centerline, up to 112' AGL/454' MSL. Building 3433' from DER, 604' left of centerline, 60' AGL/467' MSL. **Rwy 29**, tree and REIL beginning 6' from DER, 115' right of centerline, up to 17' AGL/407' MSL. Tree and pole beginning 22' from DER, 174' right of centerline, up to 23' AGL/416' MSL. Sign 24' from DER, 252' left of centerline, 3' AGL/398' MSL. Tree and pole beginning 198' from DER, 478' right of centerline, up to 57' AGL/435' MSL. Tree 231' from DER, 522' right of centerline, 444' MSL. Tree 255' from DER, 503' left of centerline, 425' MSL. Tree and pole beginning 273' from DER, on centerline, up to 80' AGL/452' MSL. Tree 364' from DER, 462' left of centerline, 433' MSL. Trees beginning 396' from DER, 226' left of centerline, up to 477' MSL. Tree 458' from DER, 467' left of centerline, 113' AGL/486' MSL. Trees beginning 459' from DER, 1' left of centerline, up to 113' AGL/491' MSL. Tree and pole beginning 771' from DER, 3' left of centerline, up to 98' AGL/494' MSL. Tree 1562' from DER, 895' left of centerline, 495' MSL. Trees beginning 1584' from DER, 495' left of centerline, up to 106' AGL/502' MSL. Tree 1888' from DER, 884' left of centerline, 510' MSL. Trees beginning 1890' from DER, 504' left of centerline, up to 98' AGL/511' MSL. Trees beginning 2018' from DER, 485' left of centerline, up to 102' AGL/515' MSL. Tree 1.1 NM from DER, 878' right of centerline, 86' AGL/600' MSL. Tree and tank beginning 1.1 NM from DER, 733' right of centerline, up to 602' MSL. Tree, tower, and tank beginning 1.1 NM from DER, 681' right of centerline, up to 96' AGL/603' MSL. **Rwy 34**, pole 167' from DER, 282' right of centerline, 26' AGL/456' MSL. Trees beginning 812' from DER, 298' left of centerline, up to 102' AGL/518' MSL. Trees beginning 1792' from DER, 719' right of centerline, up to 91' AGL/499' MSL. Trees beginning 2000' from DER, 751' right of centerline, up to 104' AGL/509' MSL.

01 FEB 2018 to 01 MAR 2018

01 FEB 2018 to 01 MAR 2018

# TAKEOFF MINIMUMS, (OBSTACLE) DEPARTURE PROCEDURES, AND DIVERSE VECTOR AREA (RADAR VECTORS)

18032

NE-2

# TAKEOFF MINIMUMS, (OBSTACLE) DEPARTURE PROCEDURES, AND DIVERSE VECTOR AREA (RADAR VECTORS)

18032

## WILDWOOD, NJ

### CAPE MAY COUNTY (WWD)

#### TAKEOFF MINIMUMS AND (OBSTACLE) DEPARTURE PROCEDURES

AMDT 3 06215 (FAA)

TAKEOFF MINIMUMS: **Rwy 10**, 300-2 or std. with a min. climb of 260' per NM to 500.

DEPARTURE PROCEDURE: **Rwy 19**, climb heading 190° to 700 before turning left.

TAKEOFF OBSTACLE NOTES: **Rwy 1**, multiple trees beginning 212' from DER, 187' left of centerline, up to 72' AGL/86' MSL. Multiple trees beginning 169' from DER, 314' right of centerline, up to 42' AGL/59' MSL. Road 197' from DER 240' right of centerline, 15' AGL/30' MSL. Road 265' from DER, on runway centerline, 15' AGL/29' MSL. **Rwy 10**, multiple trees beginning 42' from DER, 262' left of centerline, up to 60' AGL/77' MSL. Multiple trees beginning 1004' from DER, 441' left of centerline, up to 77' AGL/94' MSL. Tower 1.52 NM from DER, 643' left of centerline, 309' AGL/84' MSL. **Rwy 19**, multiple trees beginning 669' from DER, 397' left of centerline, up to 73' AGL/90' MSL. Multiple trees beginning 1010' from DER, 46' right of centerline, up to 62' AGL/90' MSL. Fence 80' from DER, 507' right of centerline, 18' AGL/30' MSL. **Rwy 28**, multiple trees beginning 74' from DER, 460' left of centerline, up to 70' AGL/84' MSL. Multiple trees beginning 1235' from DER, 496' right of centerline, up to 74' AGL/88' MSL.

## WILLIAMSON/SODUS, NY

### WILLIAMSON-SODUS (SDC)

#### TAKEOFF MINIMUMS AND (OBSTACLE) DEPARTURE PROCEDURES

AMDT 1 08213 (FAA)

TAKEOFF MINIMUMS: **Rwy 10**, 300-2 or std. w/ min. climb of 427' per NM to 700.

TAKEOFF OBSTACLE NOTES: **Rwy 10**, trees beginning 26' from DER, 296' right of centerline, up to 76' AGL/625' MSL. Trees beginning 257' from DER, 310' left of centerline, up to 56' AGL/655' MSL. Vehicles on roadway, 339' from DER, 377' right of centerline, 15' AGL/451' MSL. Pole 360' from DER, 122' left of centerline, 29' AGL/448' MSL. Pole 362' from DER, 85' right of centerline, 31' AGL/450' MSL. Silo 409' from DER, 466' left of centerline, 40' AGL/459' MSL. Antenna 1.5 NM from DER, 662' left of centerline, 100' AGL/659' MSL. Antenna 1.6 NM from DER, 400' left of centerline, 106' AGL/715' MSL. **Rwy 28**, trees beginning abeam DER, 188' left of centerline, up to 110' AGL/549' MSL. Trees beginning 72' from DER, 266' right of centerline, up to 93' AGL/522' MSL. Building 204' from DER, 271' right of centerline, 12' AGL/441' MSL. Fence 312' from DER, 59' left of centerline, 6' AGL/435' MSL. Pole 338' from DER, 271' left of centerline, 32' AGL/461' MSL. Vehicles on roadway 357' from DER, 382' left of centerline, 15' AGL/460' MSL. Building 497' from DER, 339' left of centerline, 21' AGL/450' MSL.

## WOODBINE, NJ

### WOODBINE MUNI (OBI)

#### TAKEOFF MINIMUMS AND (OBSTACLE) DEPARTURE PROCEDURES

AMDT 2 09239 (FAA)

TAKEOFF OBSTACLE NOTES: **Rwy 1**, trees beginning 182' from DER, 284' left of centerline up to 100' AGL/134' MSL. Trees beginning 38' from DER, 290' right of centerline up to 100' AGL/144' MSL. Train 387' from DER, 596' left of centerline up to 23' AGL/57' MSL. **Rwy 13**, trees beginning 4' from DER, 277' left of centerline up to 100' AGL/134' MSL. Trees beginning 2395' from DER, 865' right of centerline up to 100' AGL/134' MSL. **Rwy 19**, trees beginning 4' from DER, 284' left of centerline up to 100' AGL/129' MSL. Trees beginning 178' from DER, 212' right of centerline up to 100' AGL/124' MSL. **Rwy 31**, trees beginning 261' from DER, 529' right of centerline up to 100' AGL/144' MSL. Trees beginning 107' from DER, 288' left of centerline up to 100' AGL/144' MSL. Railroad 900' from DER left to right 23' AGL/63' MSL.

## WURTSBORO, NY

### WURTSBORO-SULLIVAN COUNTY (N82)

#### TAKEOFF MINIMUMS AND (OBSTACLE) DEPARTURE PROCEDURES

AMDT 1 03135 (FAA)

TAKEOFF MINIMUMS: **Rwys 5,9,14,18,27,32,36**, NA-obstacles. **Rwy 23**, std. with a min. climb of 388' per NM to 2100.

DEPARTURE PROCEDURE: **Rwy 23**, climb via heading 228° to 2100 before proceeding on course.

NOTE: **Rwy 23**, numerous trees 6594' from DER, 2150' right of centerline, 100' AGL/793' MSL to 100' AGL/957' MSL.

01 FEB 2018 to 01 MAR 2018

01 FEB 2018 to 01 MAR 2018

# TAKEOFF MINIMUMS, (OBSTACLE) DEPARTURE PROCEDURES, AND DIVERSE VECTOR AREA (RADAR VECTORS)

18032

NE-2