

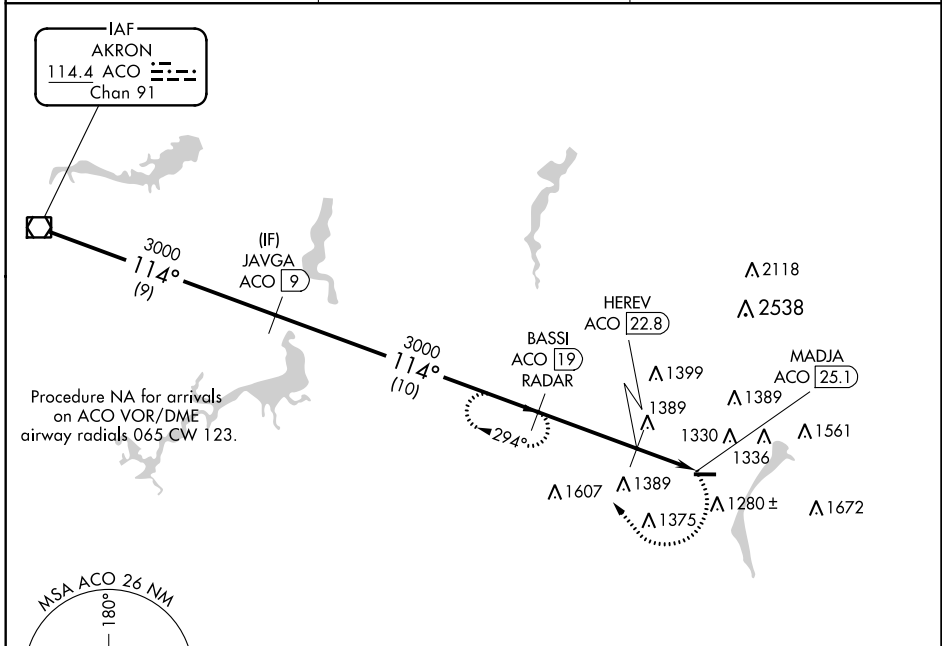
VOR/DME ACO 114.4 Chan 91	APP CRS 114°	Rwy ldg TDZE Apt Elev 1070	N/A N/A 1070
---	------------------------	--------------------------------------	--------------------

VOR-C
YOUNGSTOWN ELSER METRO (4G4)

NA DME or RADAR Required. Obtain local altimeter setting on CTAF; when not received, use New Castle altimeter setting and increase all MDA 40 feet.

MISSED APPROACH: Climbing right turn to 3000 via ACO VOR/DME R-114 to BASSI/ACO 19 DME/RADAR and hold.

AKRON-CANTON APP CON ★ 125.5 371.875	CLNC DEL 119.25	UNICOM 123.05 (CTAF)
--	---------------------------	--------------------------------



Procedure Turn NA	*1780 when using Castle altimeter setting.	3000 ACO	BASSI ACO 19 RADAR	HEREV ACO 22.8	MADJA ACO 25.1
VOR/DME	JAVGA ACO 9	BASSI ACO 19 RADAR	HEREV ACO 22.8	MADJA ACO 25.1	
3000	3000	3000	*1740		
9 NM	10 NM	3.8 NM	2.3 NM		

CATEGORY	A	B	C	D	MIRL Rwy 10-28 REIL Rwy 10 and 28
CIRCLING	1740-1 670 (700-1)	1740-1¼ 670 (700-1¼)	NA	NA	FAF to MAP 6.1 NM
HEREV FIX MINIMUMS					
CIRCLING	1660-1	590 (600-1)	NA	NA	Knots: 60 90 120 150 180 Min:Sec: 6:06 4:04 3:03 2:26 2:02

EC-2: 29 MAR 2018 to 26 APR 2018

EC-2: 29 MAR 2018 to 26 APR 2018