

APP CRS	Rwy Idg	4000
174°	TDZE	247
	Apt Elev	248

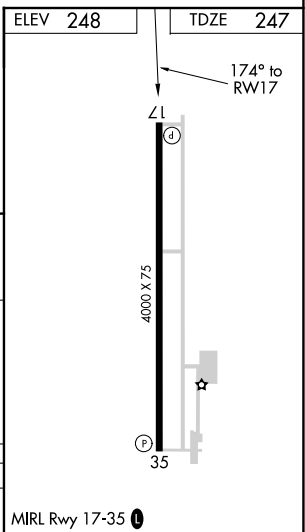
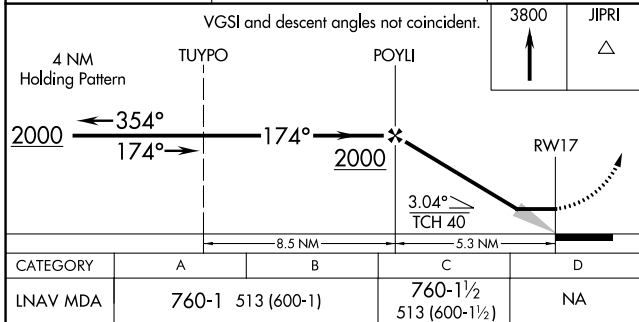
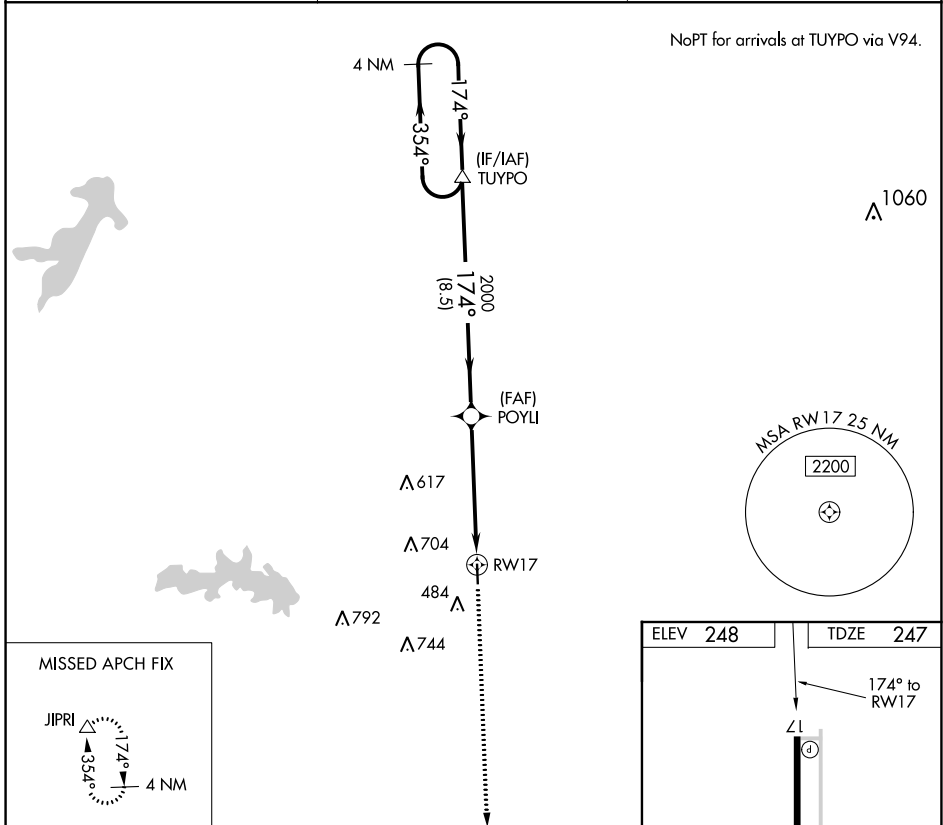
RNAV (GPS) RWY 17

PANOLA COUNTY-SHARPE FIELD (4F2)

RNP APCH.	MISSED APPROACH: Climb to 3800 direct JIPRI and hold, continue climb-in-hold to 3800.
<p>▲ NA Use Shreveport Rgnl altimeter setting; when not received use East Texas Rgnl altimeter setting. Procedure NA at night. Rwy 17 helicopter visibility reduction below 1 SM NA.</p>	

AWOS-3PT 121.125	SHREVEPORT APP CON * 119.9 335.55	UNICOM 122.8 (CTAF) ①
----------------------------	---	--

NoPT for arrivals at TUYPO via V94.



CATEGORY	A	B	C	D
LNAV MDA	760-1	513 (600-1)	760-1½ 513 (600-1½)	NA

SC-2, 20 MAY 2021 to 17 JUN 2021

SC-2, 20 MAY 2021 to 17 JUN 2021