

APP CRS **354°**
 Rwy Idg **4000**
 TDZE **248**
 Apt Elev **248**

RNAV (GPS) RWY 35

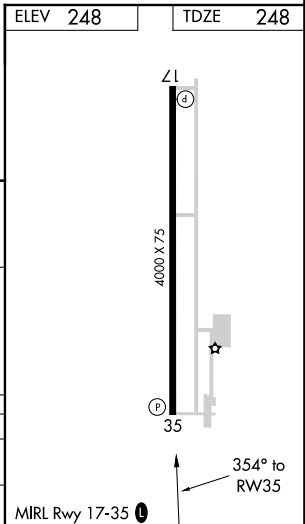
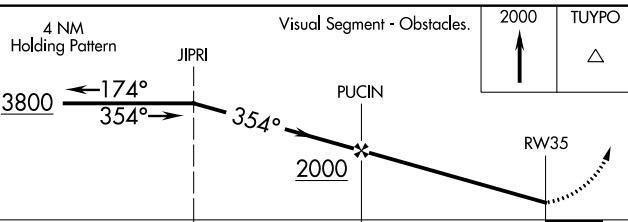
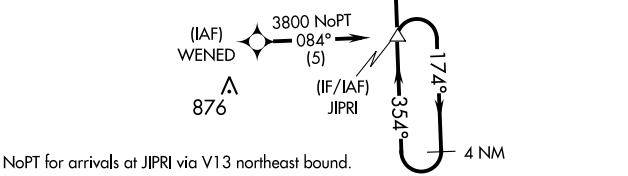
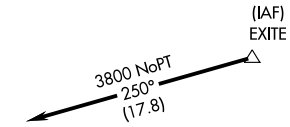
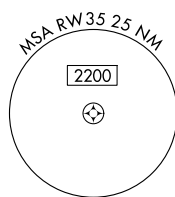
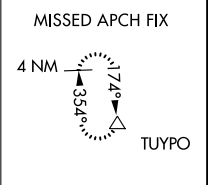
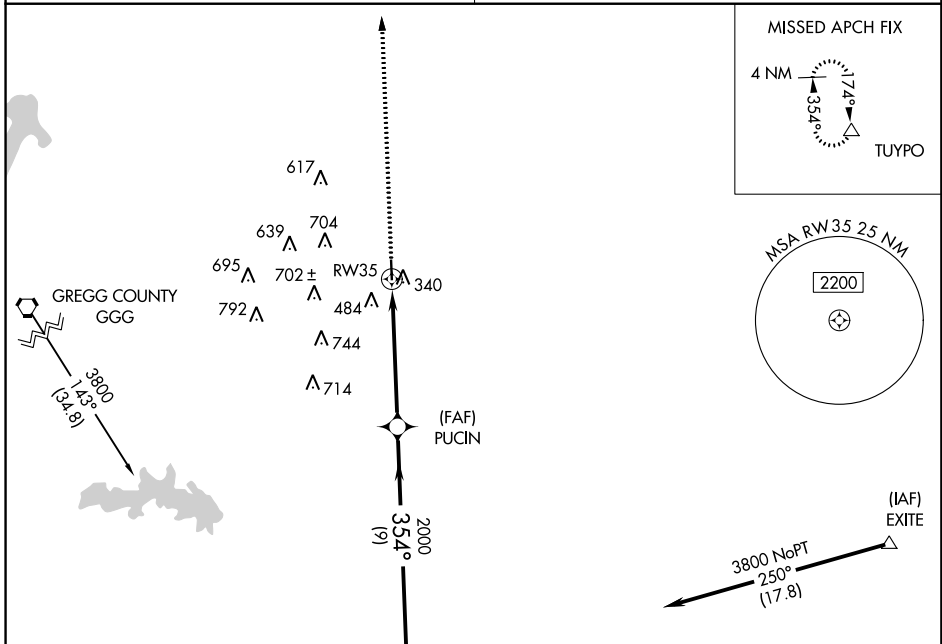
PANOLA COUNTY-SHARPE FIELD (4F2)

▲ NA Circling Rwy 17 NA at night. Rwy 35 helicopter visibility reduction below 3/4 SM NA. DME/DME RNP-0.3 NA. Use Shreveport Regional altimeter setting; when not received use East Texas Regional altimeter setting.

MISSED APPROACH: Climb to 2000 direct TUYPO and hold.

SHREVEPORT APP CON *
119.9 335.55

UNICOM
122.8 (CTAF)



CATEGORY	A	B	C	D
RNAV MDA	840-1	592 (600-1)	840-1½ 592 (600-1½)	NA
CIRCLING	920-1	672 (700-1)	920-2 672 (700-2)	NA

SC-2: 16 AUG 2018 to 13 SEP 2018

SC-2: 16 AUG 2018 to 13 SEP 2018

NDB RPF 332	APP CRS 359°	Rwy Idg TDZE Apt Elev	4000 248 248
-----------------------	------------------------	-----------------------------	---

NDB RWY 35

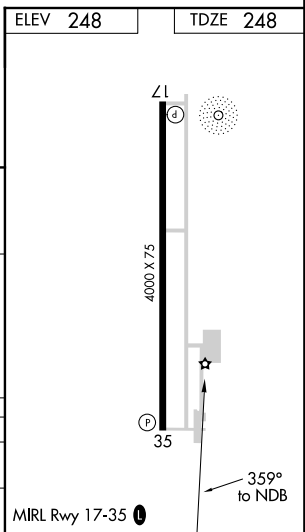
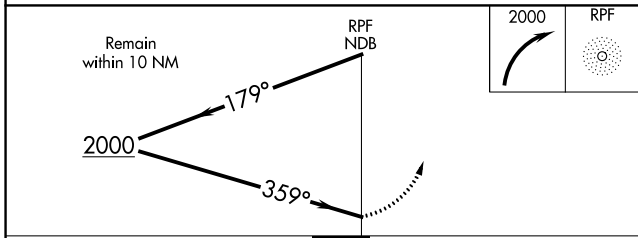
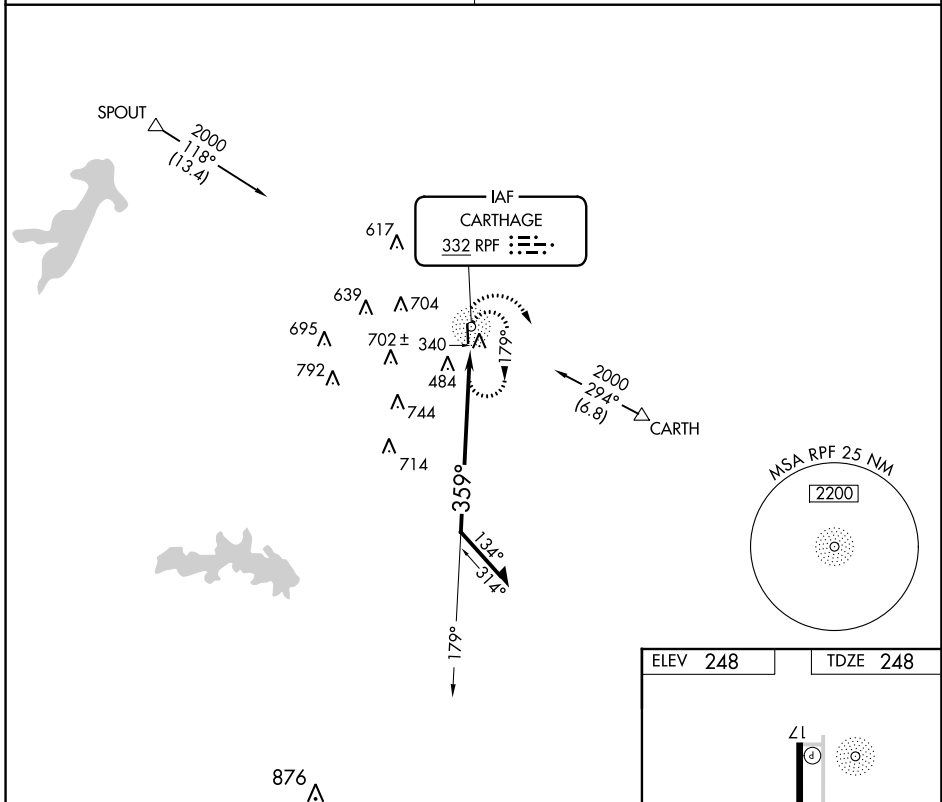
PANOLA COUNTY-SHARPE FIELD (4F2)

NA Use Shreveport Regional altimeter setting; when not received use East Texas Rgnl altimeter setting. Rwy 35 helicopter visibility reduction below 3/4 SM NA. Rwy 17 helicopter visibility reduction below 1 SM NA. Circling Rwy 17 NA at night.

MISSED APPROACH: Climbing right turn to 2000 in RPF NDB holding pattern.

SHREVEPORT APP CON *
119.9 335.55

UNICOM
122.8 (CTAF)



CATEGORY	A	B	C	D
S-35	1000-1 752 (800-1)	1000-1 1/4 752 (800-1 1/4)	1000-2 1/4 752 (800-2 1/4)	NA
CIRCLING	1000-1 752 (800-1)	1000-1 1/4 752 (800-1 1/4)	1000-2 1/4 752 (800-2 1/4)	NA

SC-2: 16 AUG 2018 to 13 SEP 2018

SC-2: 16 AUG 2018 to 13 SEP 2018

APP CRS 174°	Rwy Idg 4000
	TDZE 247
	Apt Elev 248

RNAV (GPS) RWY 17

PANOLA COUNTY-SHARPE FIELD (4F2)

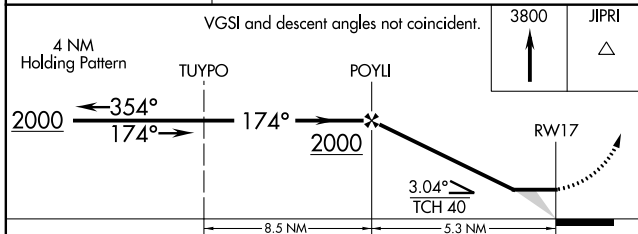
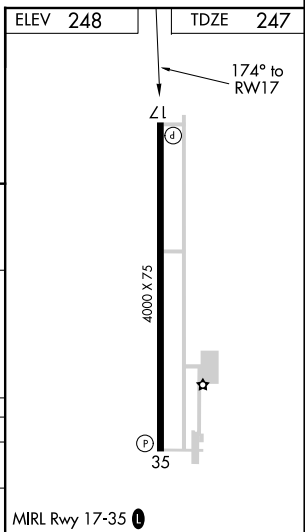
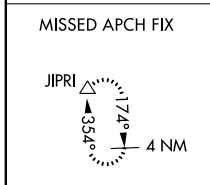
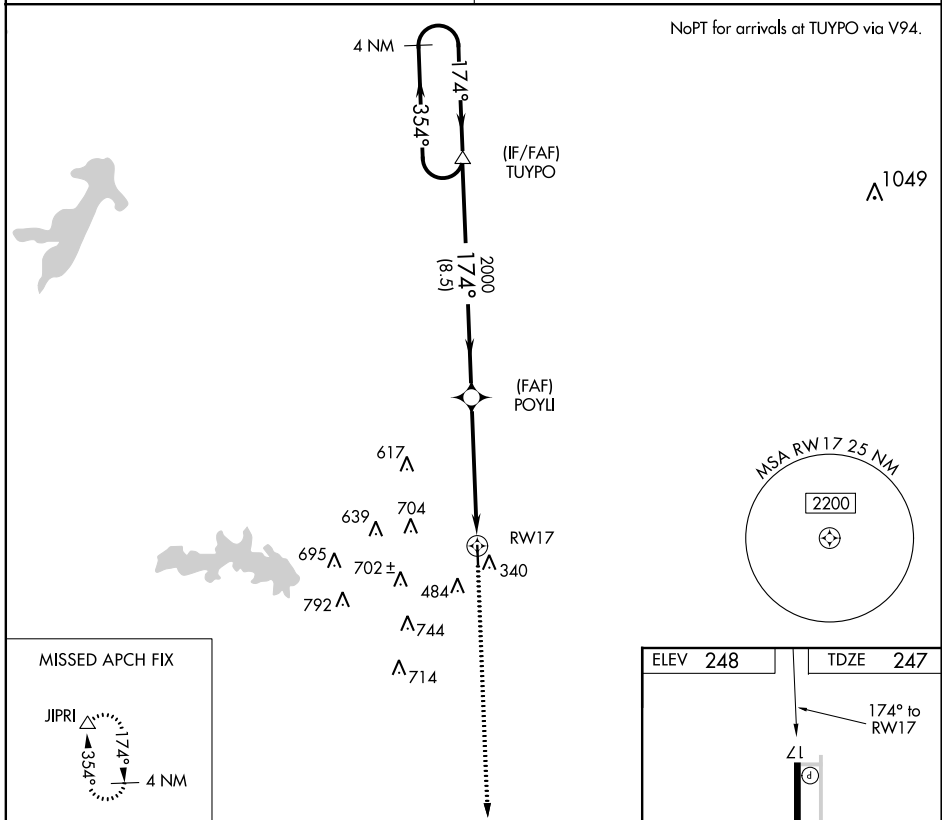
▲ NA DME/DME RNP-0.3 NA. Use Shreveport Rgnl altimeter setting; when not received use East Texas Rgnl altimeter setting. Straight-in Rwy 17 NA at night, Circling Rwy 17 NA at night. Rwy 17 helicopter visibility reduction below 1 SM NA.

MISSED APPROACH: Climb to 3800 direct JIPRI and hold, continue climb-in-hold to 3800.

SHREVEPORT APP CON *
119.9 335.55

UNICOM
122.8 (CTAF) 0

NoPT for arrivals at TUYPO via V94.



CATEGORY	A	B	C	D
RNAV MDA	760-1	513 (600-1)	760-1½ 513 (600-1½)	NA
CIRCLING	920-1	672 (700-1)	920-2 672 (700-2)	NA

MIRL Rwy 17-35 0

SC-2: 16 AUG 2018 to 13 SEP 2018

SC-2: 16 AUG 2018 to 13 SEP 2018