

WAAS CH <b>53424</b> <b>W25A</b>	APP CRS <b>249°</b>	Rwy Idg TDZE Apt Elev	<b>3245</b> <b>82</b> <b>86</b>
--	------------------------	-----------------------------	---------------------------------------

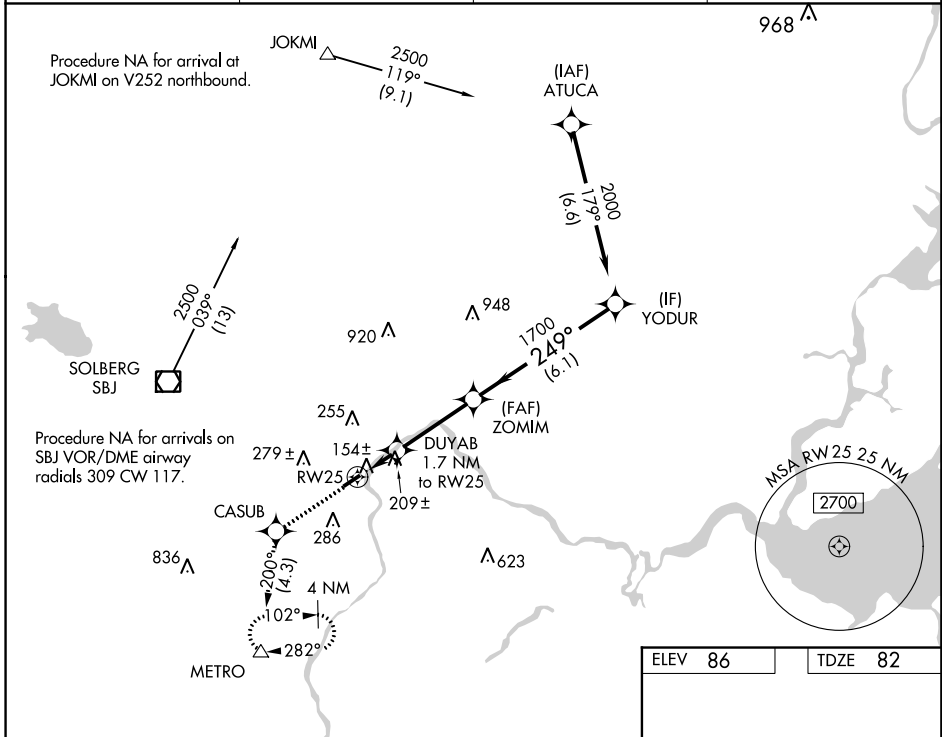
# RNAV (GPS) RWY 25

CENTRAL JERSEY RGNL (47N)

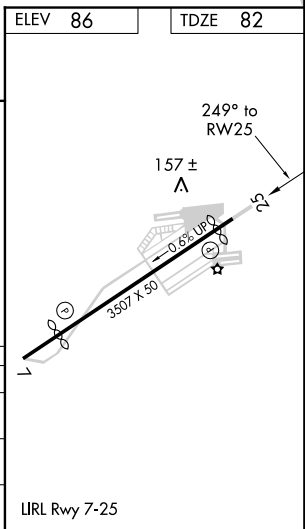
**NA** DME/DME RNP-0.3 NA. Procedure NA at night. Use Trenton altimeter setting, when not received use Newark altimeter setting and increase all MDA 20 feet and LP Cat C visibility 1/8 mile. Rwy 7, 25 helicopter visibility reduction below 1 SM NA.

**MISSED APPROACH:** Climb to 2000 direct CASUB and on track 200° to METRO and hold.

TRENTON ASOS <b>126.77</b>	NEW YORK APP CON <b>132.8 379.9</b>	GCO <b>121.725</b>	UNICOM <b>122.7</b> (CTAF)
-------------------------------	--	-----------------------	-------------------------------



2000	CASUB	tr 200°	METRO	VGSI and descent angles not coincident (VGSI Angle 3.30/TCH 40).	YODUR
CATEGORY	A	B	C	D	
LP MDA	480-1	398 (400-1)	480-1 1/8 398 (400-1 1/8)	NA	
LNVA MDA	520-1	438 (500-1)	520-1 1/8 438 (500-1 1/8)	NA	
CIRCLING	580-1 494 (500-1)	700-1 614 (700-1)	700-1 1/4 614 (700-1 1/4)	NA	



NE-2. 01 FEB 2018 to 01 MAR 2018

NE-2. 01 FEB 2018 to 01 MAR 2018

APP CRS	Rwy Idg	<b>2927</b>
<b>069°</b>	TDZE	<b>82</b>
	Apt Elev	<b>86</b>

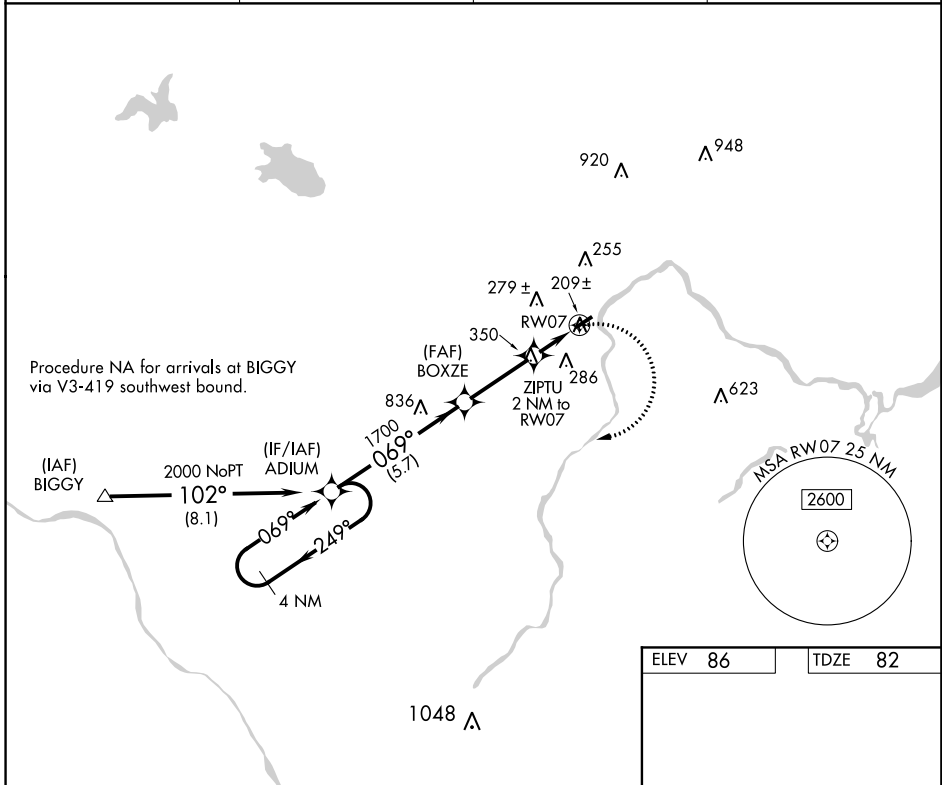
# RNAV (GPS) RWY 7

CENTRAL JERSEY RGNL (47N)

**NA** Procedure NA at night. DME/DME RNP-0.3 NA. Rwy 7, 25 helicopter visibility reduction below 1 SM NA. Use Trenton altimeter setting; when not received, use Newark altimeter setting, and increase all MDA 20 feet, increase LNAV Cat C visibility 1/8 mile.

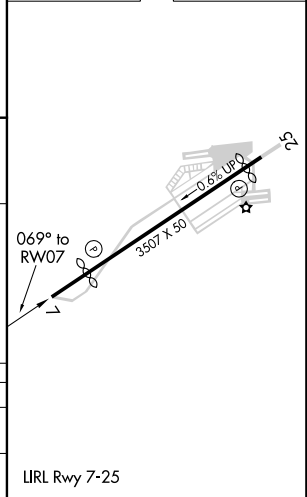
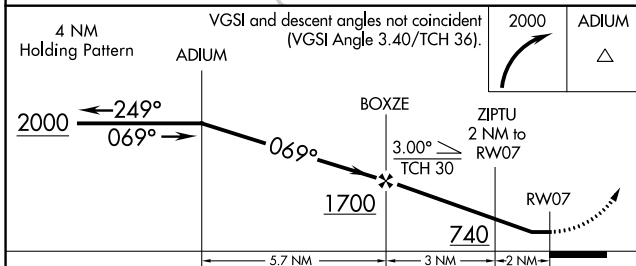
**MISSED APPROACH:** Climbing right turn to 2000 direct ADIUM and hold.

TRENTON ASOS <b>126.77</b>	NEW YORK APP CON <b>132.8 379.9</b>	GCO <b>121.725</b>	UNICOM <b>122.7</b> (CTAF)
-------------------------------	--	-----------------------	-------------------------------



Procedure NA for arrivals at BIGGY via V3-419 southwest bound.

ELEV 86	TDZE 82
---------	---------



CATEGORY	A	B	C	D
LNAV MDA	520-1	438 (500-1)	520-1 1/4 438 (500-1 1/4)	NA
CIRCLING	580-1 494 (500-1)	700-1 614 (700-1)	700-1 3/4 614 (700-1 3/4)	NA

LIRL Rwy 7-25

NE-2. 01 FEB 2018 to 01 MAR 2018

NE-2. 01 FEB 2018 to 01 MAR 2018

VOR/DME SBJ <b>112.9</b> Chan <b>76</b>	APP CRS <b>128°</b>	Rwy Idg TDZE Apt Elev	<b>N/A</b> <b>N/A</b> <b>86</b>
---	------------------------	-----------------------------	---------------------------------------

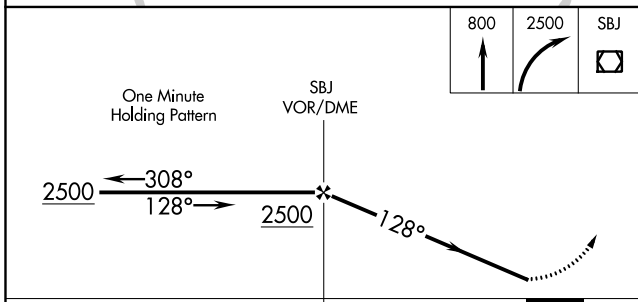
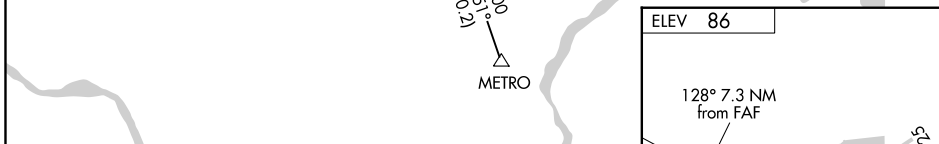
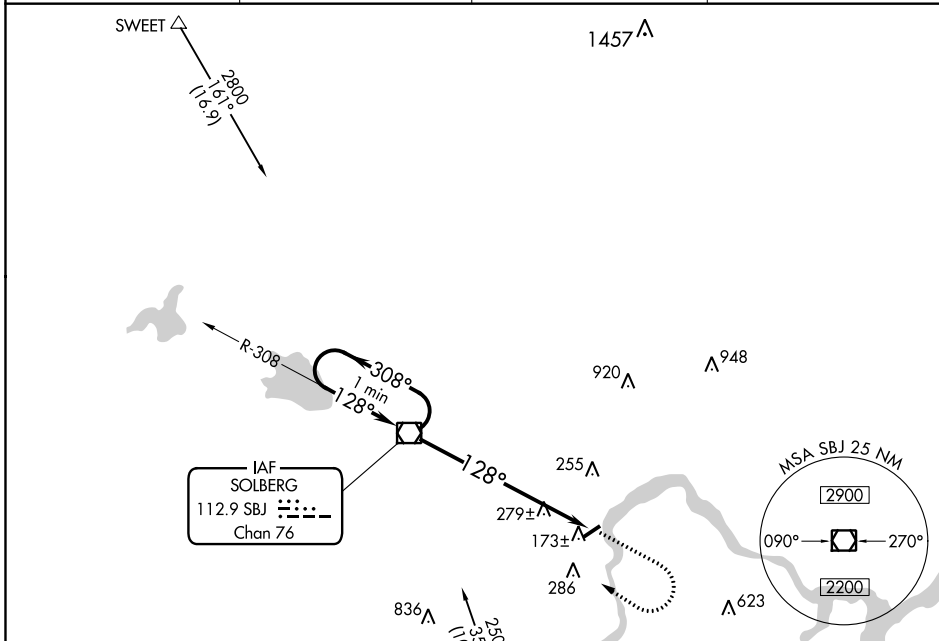
**VOR-A**

CENTRAL JERSEY RGNL (47N)

**NA** Use Trenton Mercer altimeter setting; when not received, use Newark Liberty Intl altimeter setting. Procedure NA at night. Helicopter visibility reduction below 1 SM NA.

MISSED APPROACH: Climb to 800 then climbing right turn to 2500 direct SBJ VOR/DME and hold.

TRENTON ASOS <b>126.77</b>	NEW YORK APP CON <b>132.8 379.9</b>	GCO <b>121.725</b>	UNICOM <b>122.7</b> (CTAF)
-------------------------------	--	-----------------------	-------------------------------



CATEGORY	A	B	C	D	FAF to MAP 7.3 NM					
CIRCLING	720-1	634 (700-1)	720-1¾ 634 (700-1¾)	NA	Knots	60	90	120	150	180
					Min:Sec	7:18	4:52	3:39	2:55	2:26

**VOR-A**

NE-2: 01 FEB 2018 to 01 MAR 2018

NE-2: 01 FEB 2018 to 01 MAR 2018