

APP CRS	Rwy ldg	2697
320°	TDZE	762
	Apt Elev	773

RNAV (GPS) RWY 32

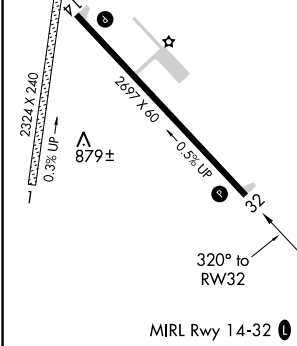
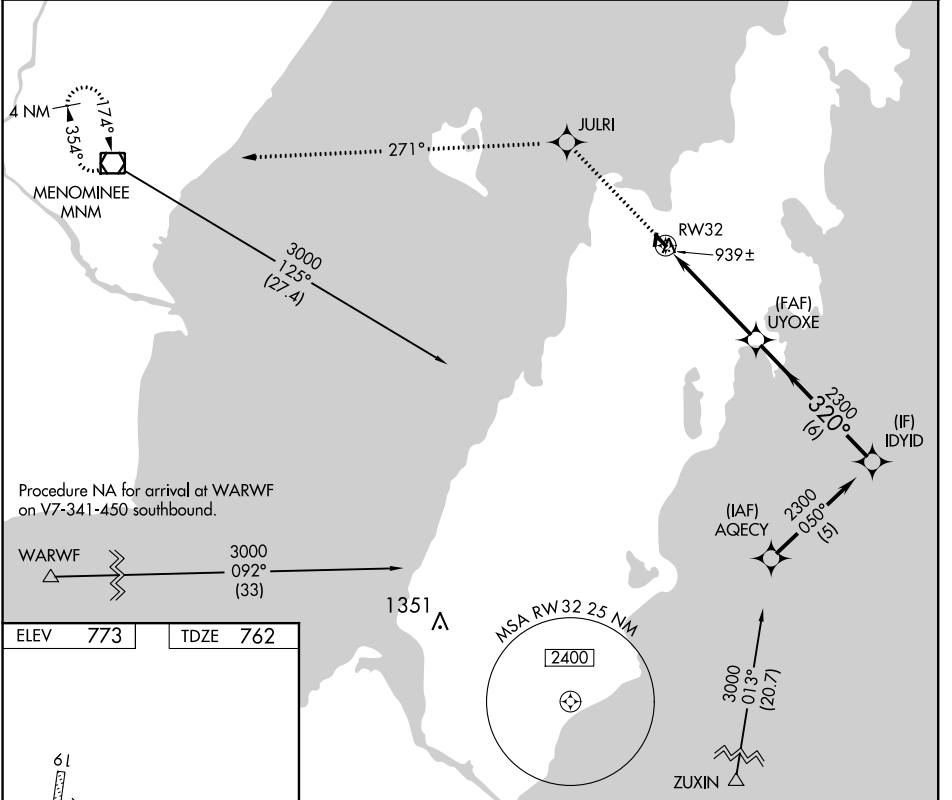
EPHRAIM-GIBRALTAR (3D2)

▽ DME/DME RNP-0.3 NA. Procedure NA at night. Visibility reduction by helicopters NA. Use Door County Cherryland altimeter setting; when not received, use Menominee altimeter setting and increase all MDA 20 feet.

△ NA

MISSED APPROACH: Climb to 3000 direct JULRI and on track 271° to MNM VOR/DME and hold.

AWOS-3PT 124.175	GREEN BAY APP CON* 120.3 338.2	UNICOM 123.0 (CTAF) 0
----------------------------	--	---------------------------------



3000	JULRI	tr 271°	MNM	VGSI and descent angles not coincident (VGSI Angle 3.00/TCH 25). UYOXE	IDYID
↑	✧		◻		
RWY 32		2300		320°	
4.7 NM		6 NM			
CATEGORY	A	B	C	D	
LNAV MDA	1260-1	498 (500-1)	1260-1¼ 498 (500-1¼)	NA	
CIRCLING	1340-1	567 (600-1)	1340-1½ 567 (600-1½)	NA	

EC-3, 21 JUN 2018 to 19 JUL 2018

EC-3, 21 JUN 2018 to 19 JUL 2018