

WAAS CH <b>77535</b> <b>W23A</b>	APP CRS <b>233°</b>	Rwy Idg TDZE Apt Elev	<b>3508</b> <b>610</b> <b>610</b>
--	------------------------	-----------------------------	---

# RNAV (GPS) RWY 23

UNION COUNTY, TROY SHELTON FIELD (35A)

RNP APCH.

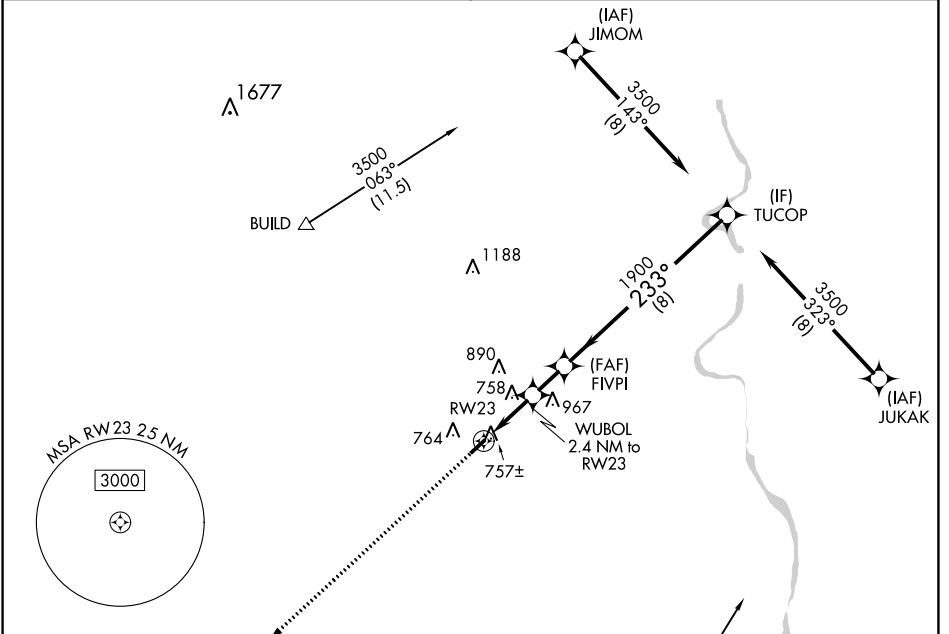
▼ When local altimeter setting not received, use Laurens altimeter setting.  
 ▲ NA Procedure NA at night. Rwy 23 helicopter visibility reduction below 1 SM NA.

MISSED APPROACH: Climb to 3500 direct ZONLU and hold.

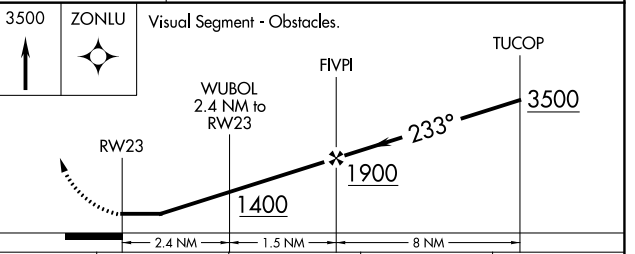
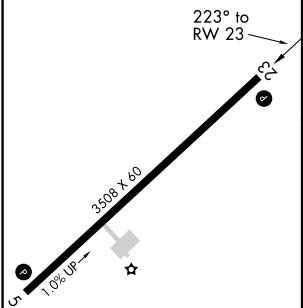
AWOS-3PT  
**119.45**

GREER APP CON \*  
**119.4 350.2**

UNICOM  
**122.7** (CTAF) **1**



ELEV 610 TDZE 610



CATEGORY		A	B	C	D
LP	MDA	1080-1	470 (500-1)		NA
LNAV	MDA	1140-1	530 (600-1)		NA
<b>C</b>	CIRCLING	1180-1	570 (600-1)		NA

MIRL Rwy 5-23 **1**

SE-2, 15 JUL 2021 to 12 AUG 2021

SE-2, 15 JUL 2021 to 12 AUG 2021