

WAAS CH 66039 W14A	APP CRS 142°	Rwy Idg TDZE Apt Elev	5001 1198 1198
---------------------------------	------------------------	-----------------------------	---

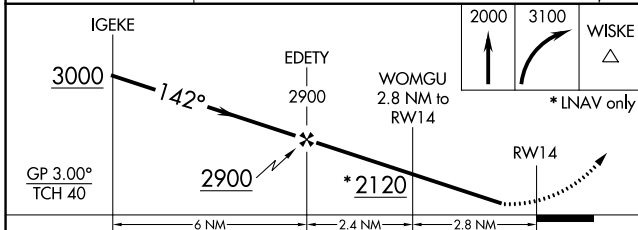
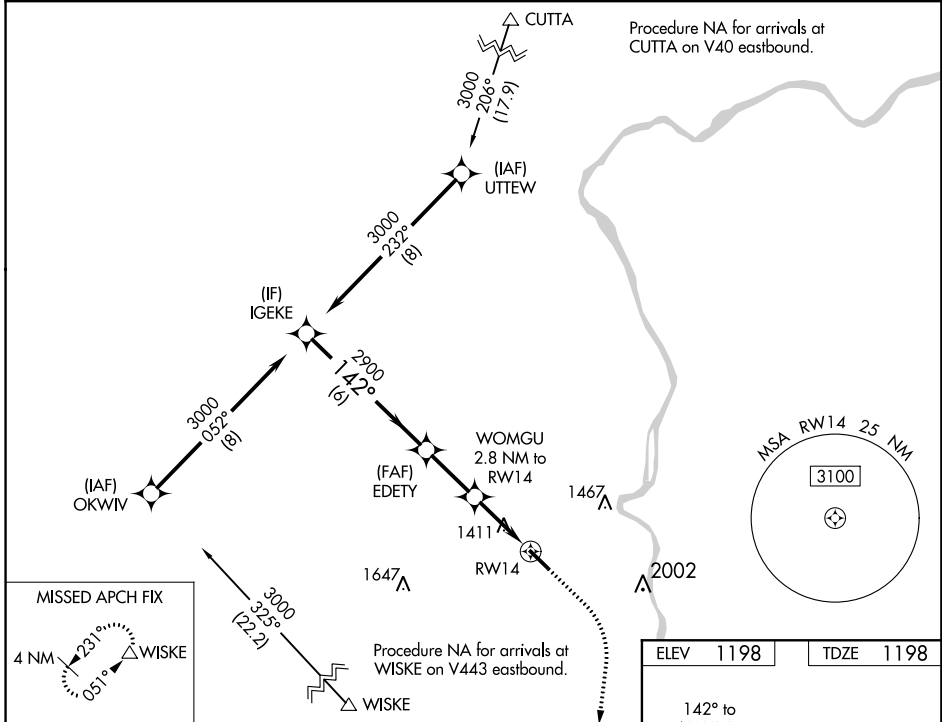
RNAV (GPS) RWY 14

JEFFERSON COUNTY AIRPARK (2G2)

Baro-VNAV NA. DME/DME RNP-0.3 NA. Use Wheeling altimeter setting, when not received, use Pittsburgh International altimeter setting and increase LPV DA to 1502, LNAV/VNAV DA to 1826, all MDA 40 feet and visibility LNAV Cat C 1/2 SM. Rwy 14 helicopter visibility reduction below 3/4 SM NA. Circling Rwy 32 NA at night.

MISSED APPROACH: Climb to 2000 then climbing right turn to 3100 direct WISKE and hold.

WHEELING ASOS 127.375	PITTSBURGH APP CON 124.75 338.2	UNICOM 122.8 (CTAF) 0
---------------------------------	---	---------------------------------



CATEGORY	A	B	C	D
LPV DA	1475-1 277 (300-1)			NA
LNAV/VNAV DA	1799-2½ 601 (700-2½)			NA
LNAV MDA	1740-1	542 (600-1)	1740-1⅝ 542 (600-1⅝)	NA
C CIRCLING	1800-1 602 (700-1)	1940-1 742 (800-1)	1940-2¼ 742 (800-2¼)	NA

ELEV 1198	TDZE 1198
-----------	-----------

142° to RWY 14

3100

2000

WISKE

5001 X 75

REIL Rwy 32 0

MIRL Rwy 14-32 0

EC-2: 29 MAR 2018 to 26 APR 2018

EC-2: 29 MAR 2018 to 26 APR 2018

WAAS CH 58339 W32A	APP CRS 322°	Rwy Idg TDZE 1192 Apt Elev 1198	5001
--	------------------------	---	-------------

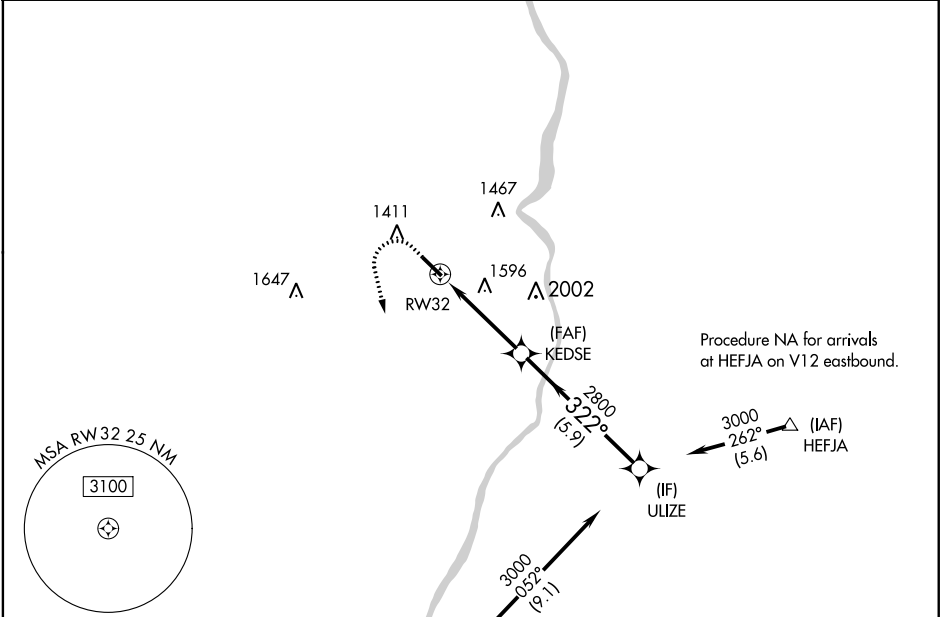
RNAV (GPS) RWY 32

JEFFERSON COUNTY AIRPARK (2G2)

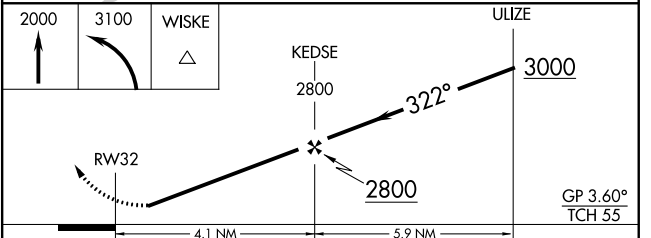
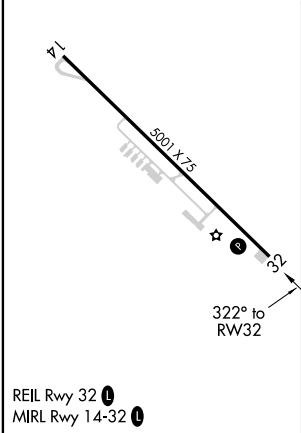
⚠ Baro-VNAV NA. DME/DME RNP-0.3 NA. Use Wheeling altimeter setting, when not received, use Pittsburgh International altimeter setting and increase LPV DA to 1516, LNAV/VNAV DA to 1496, all MDA 40 feet and visibility LNAV Cat C ½ SM. Rwy 32 helicopter visibility reduction below 1 SM NA. Straight-in Rwy 32 NA at night, Circling Rwy 32 NA at night.

MISSED APPROACH: Climb to 2000 then climbing left turn to 3100 direct WISKE and hold.

WHEELING ASOS 127.375	PITTSBURGH APP CON 124.75 338.2	UNICOM 122.8 (CTAF) 0
---------------------------------	---	---------------------------------



ELEV 1198	TDZE 1192
-----------	-----------



CATEGORY	A		B		C		D
	LPV	DA	LPV	DA	LPV	DA	DA
LNAV/VNAV	1469-1	277 (300-1)	1489-1	297 (300-1)	1800-1	608 (700-1)	NA
LNAV MDA	1800-1	608 (700-1)	1800-1	608 (700-1)	1800-1 3/4	608 (700-1 3/4)	NA
C CIRCLING	1800-1	602 (700-1)	1940-1	742 (800-1)	1940-2 1/4	742 (800-2 1/4)	NA

EC-2: 29 MAR 2018 to 26 APR 2018

EC-2: 29 MAR 2018 to 26 APR 2018