

|  |                        |   |             |
|--|------------------------|---|-------------|
| WAAS<br>CH <b>86922</b><br><b>W03A</b> | APP CRS<br><b>033°</b> | Rwy ldg<br>TDZE <b>714</b><br>Apt Elev <b>718</b> | <b>5001</b> |
|--|------------------------|---|-------------|

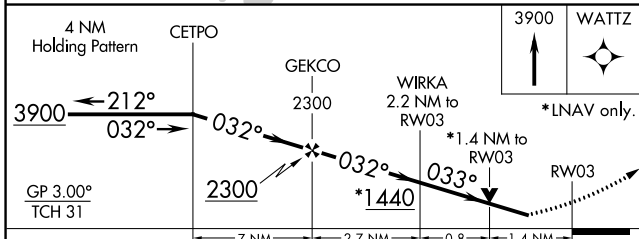
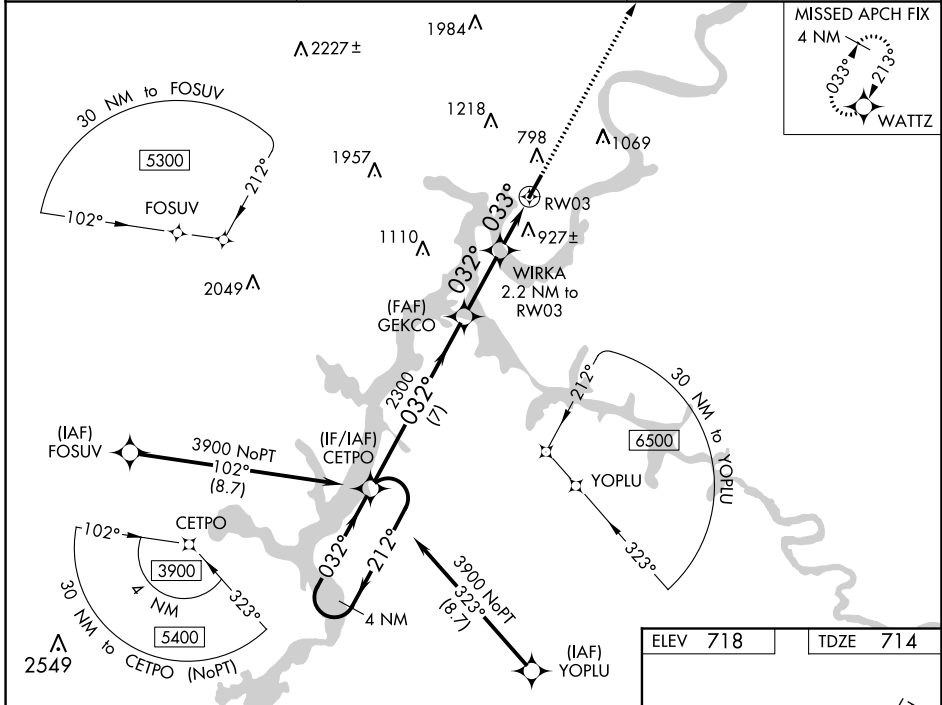
# RNAV (GPS) RWY 3

MARK ANTON (2A $\emptyset$ )

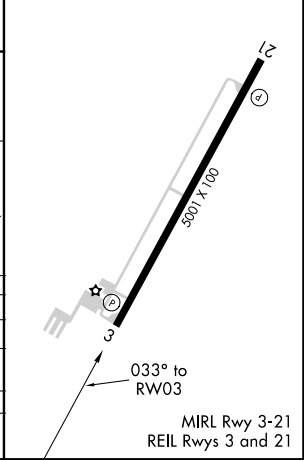
**⚠** Baro-VNAV NA when using Chattanooga altimeter setting. For uncompensated Baro-VNAV systems, LNAV/VNAV NA below -16°C (4°F) or above 39°C (102°F). DME/DME RNP-0.3 NA. VDP NA with Chattanooga altimeter setting. When VGSI inop, Circling Rwy 21 NA at night. When local altimeter setting not received, use Chattanooga altimeter setting and increase all DA 75 feet and all MDA 80 feet; increase LPV all Cats, LNAV/VNAV all Cats, LNAV Cat C and D and Circling Cat C and D visibility ¼ mile. Rwy 3 helicopter visibility reduction below ¾ SM NA. Rwy 21 helicopter visibility reduction below 1 SM NA.

**MISSED APPROACH:**  
Climb to 3900 direct WATTZ and hold.

|                          |   |                               |
|--------------------------|---|-------------------------------|
| AWOS-3<br><b>135.075</b> | CHATTANOOGA APP CON ★<br><b>125.1 379.1</b> | UNICOM<br><b>123.0 (CTAF)</b> |
|--------------------------|---|-------------------------------|



|          |          |
|----------|----------|
| ELEV 718 | TDZE 714 |
|----------|----------|



| CATEGORY     | A                     | B                     | C                          | D  |
|--------------|-----------------------|-----------------------|----------------------------|--|
| LPV DA       |                       | 964-7 $\frac{7}{8}$   | 250 (300-7 $\frac{7}{8}$ ) |  |
| LNAV/VNAV DA |                       | 1213-1 $\frac{3}{4}$  | 499 (500-1 $\frac{3}{4}$ ) |  |
| LNAV MDA     | 1180-1                | 466 (500-1)           | 1180-1 $\frac{3}{8}$       | 466 (500-1 $\frac{1}{2}$ )                         |
| CIRCLING     | 1380-1<br>662 (700-1) | 1420-1<br>702 (800-1) | 1420-2<br>702 (800-2)      | 1420-2 $\frac{1}{4}$<br>702 (800-2 $\frac{1}{4}$ ) |

SE-1, 07 OCT 2021 to 04 NOV 2021

SE-1, 07 OCT 2021 to 04 NOV 2021