

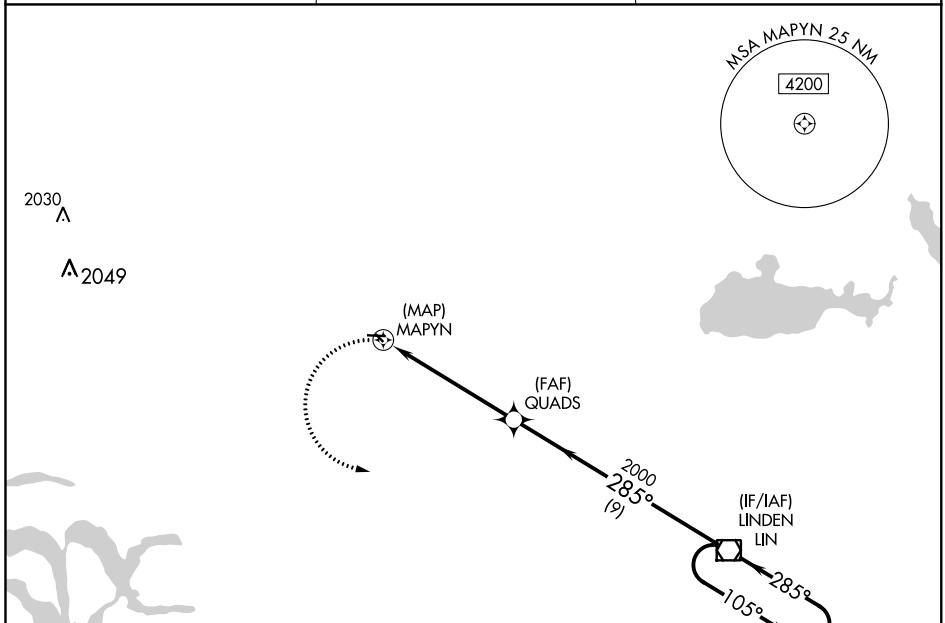
APP CRS 285°	Rwy Idg TDZE Apt Elev	N/A N/A 60
------------------------	-----------------------------	---------------------------------------

RNAV (GPS)-B

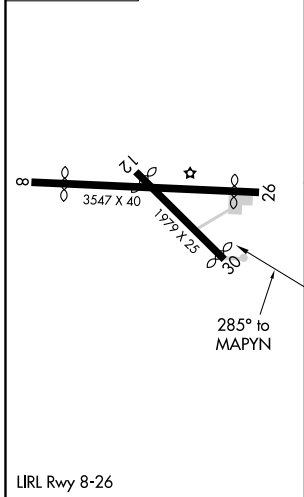
LODI (103)

<p>▽ DME/DME RNP-0.3 NA.</p> <p>△ NA Use Stockton altimeter setting, when not received, use Sacramento Intl altimeter setting and increase all MDA 40 feet.</p>	<p>MISSED APPROACH: Climbing left turn to 2000 direct LIN VOR/DME and hold.</p>
---	---

<p>STOCKTON METROPOLITAN ASOS 118.25</p>	<p>NORCAL APP CON 125.1 363.2</p>	<p>CTAF 122.9</p>
---	--	------------------------------



ELEV 60



NoPT for arrival on LIN VOR/DME airway radials 124 CW 192.

2000	LIN	QUADS	LIN VOR/DME	4 NM Holding Pattern
2000	MAPYN	285°	105°	2000
5.5 NM	9 NM			
CATEGORY	A	B	C	D
CIRCLING	640-1	580 (600-1)		NA