

VOR/DME ACO 114.4 Chan 91	APP CRS 278°	Rwy Idg TDZE 1183 Apt Elev 1190	3556
---	------------------------	---	-------------

VOR RWY 27

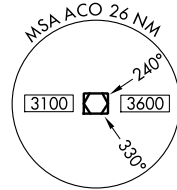
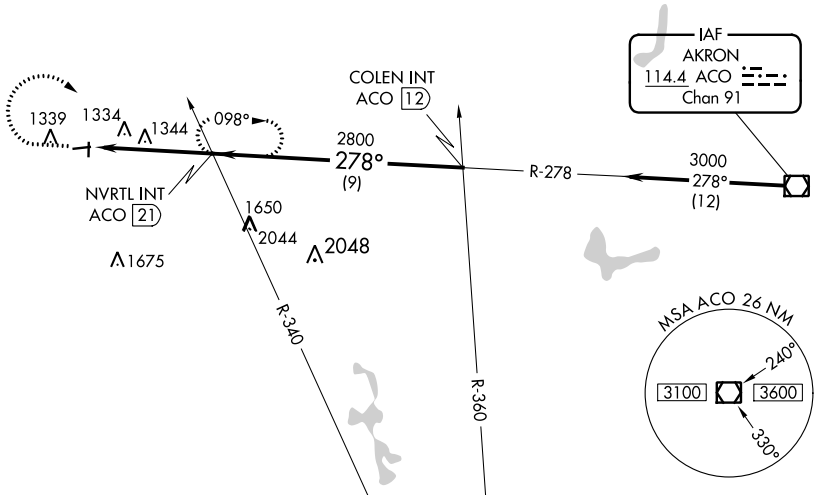
MEDINA MUNI (1G5)

NA Use Cleveland-Hopkins Intl altimeter setting. Circling Rwy 1, 9, 19 NA at night. Rwy 27 helicopter visibility reduction below 3/4 SM NA.

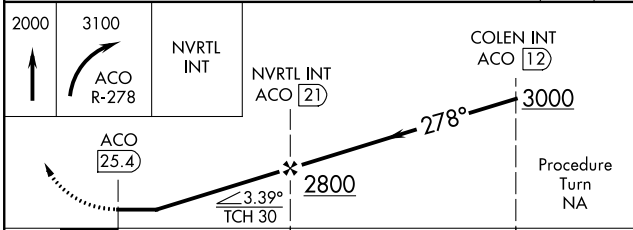
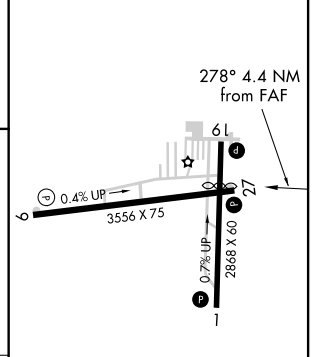
MISSED APPROACH: Climb to 2000 then climbing right turn to 3100 on ACO R-278 to NVRTL Int/21 DME and hold, continue climb-in-hold to 3100.

CLE ASOS 127.85	CLEVELAND APP CON 125.35 346.325	UNICOM 123.0 (CTAF) 0
---------------------------	--	---------------------------------

Procedure NA for arrivals on ACO VOR/DME airway radials 237 CW 323.



ELEV 1190	TDZE 1183
-----------	-----------



CATEGORY	A	B	C	D
S-27	1760-1 577 (600-1)	1760-1¼ 577 (600-1¼)	1760-1½ 577 (600-1½)	NA
CIRCLING	1800-1 610 (700-1)	1800-1¼ 610 (700-1¼)	1800-1¾ 610 (700-1¾)	NA

REIL Rwy 27 (L)
MIRL Rwy 9-27, 1-19 (L)

FAF to MAP 4.4 NM

Knots	60	90	120	150	180
Min:Sec	4:24	2:56	2:12	1:46	1:28

EC-2, 04 NOV 2021 to 02 DEC 2021

EC-2, 04 NOV 2021 to 02 DEC 2021