

APP CRS	Rwy Idg	3556
271°	TDZE	1183
	Apt Elev	1190

RNAV (GPS) RWY 27

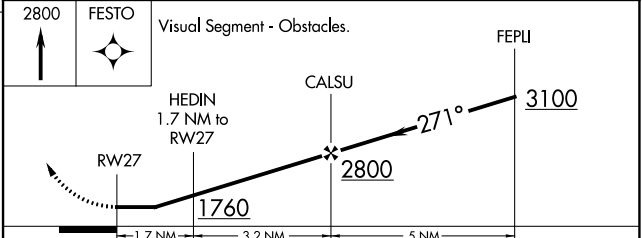
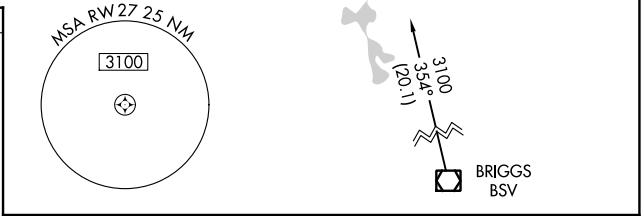
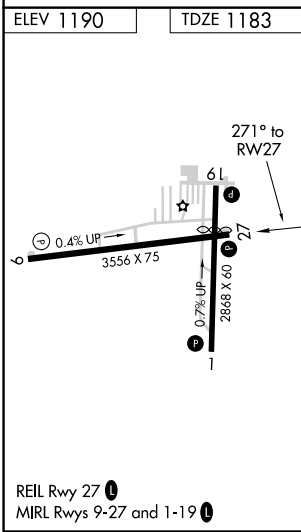
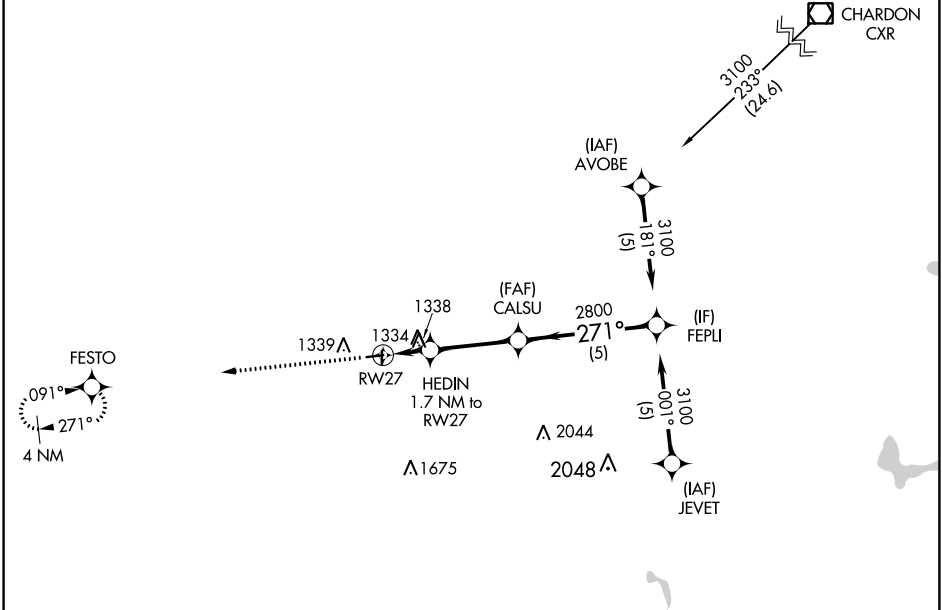
MEDINA MUNI (1G5)

RNP APCH.

NA Rwy 27 helicopter visibility reduction below 3/4 SM NA. Use Cleveland-Hopkins Intl altimeter setting.

MISSED APPROACH: Climb to 2800 direct FESTO and hold.

CLE ASOS 127.85	CLEVELAND APP CON 125.35 346.325	UNICOM 123.0 (CTAF) 0
---------------------------	--	---------------------------------



CATEGORY	A	B	C	D
LNAV MDA	1700-1	517 (600-1)	1700-1 3/8 517 (600-1 3/8)	NA

EC-2, 02 DEC 2021 to 30 DEC 2021

EC-2, 02 DEC 2021 to 30 DEC 2021