

HUDSON, NEW YORK

AL-6204 (FAA)

17341

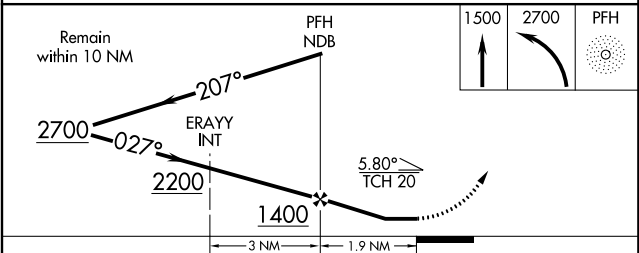
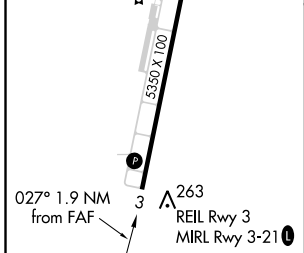
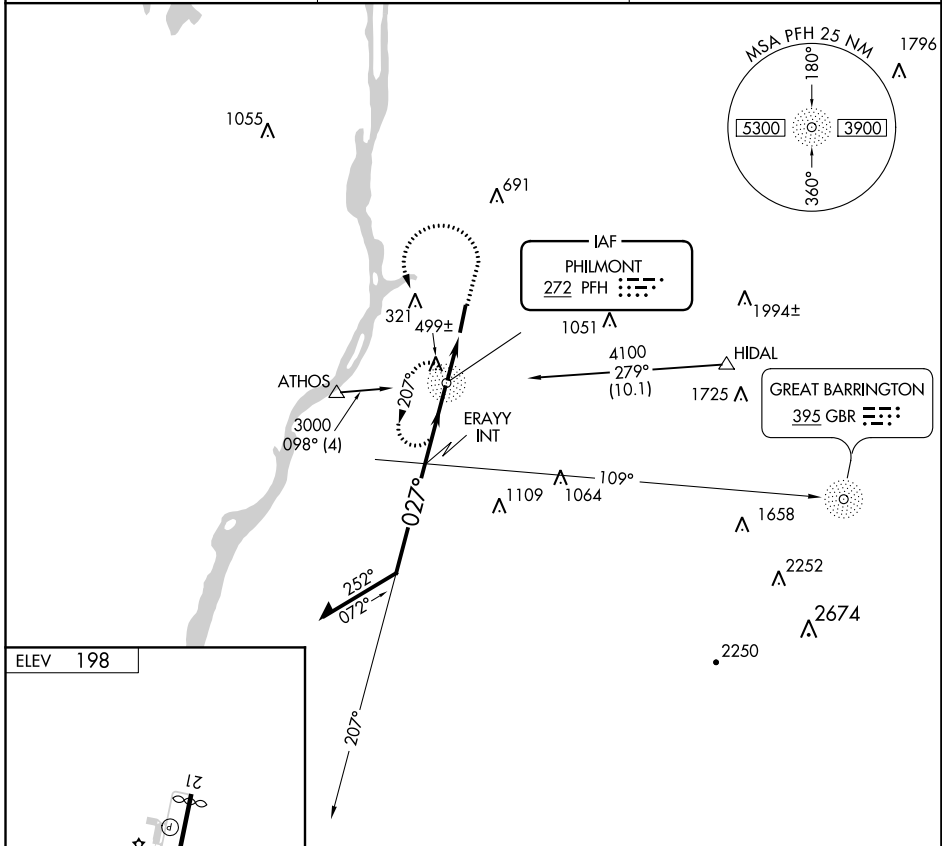
NDB PFH 272	APP CRS 027°	Rwy Idg TDZE Apt Elev	N/A N/A 198
-----------------------	------------------------	-----------------------------	--

NDB-A

COLUMBIA COUNTY (1B1)

<p>▼ Helicopter visibility reduction below 3/4 SM NA. When local altimeter setting not received, use Albany altimeter setting and increase all MDA 80 feet, increase Cat C visibility 1/2 mile and Cat D visibility 1/4 mile.</p> <p>▲ NA</p>	<p>MISSED APPROACH: Climb to 1500 then climbing left turn to 2700 direct PFH NDB and hold.</p>
---	---

AWOS-3 133.525	ALBANY APP CON 132.825 307.2	UNICOM 123.05 (CTAF)
--------------------------	--	--------------------------------



FAF to MAP 1.9 NM		CATEGORY	A	B	C	D
Knots	60 90 120 150 180	CIRCLING	800-1 602 (700-1)	820-1 622 (700-1)	860-1 3/4 662 (700-1 3/4)	920-2 1/4 722 (800-2 1/4)
Min:Sec	1:54 1:16 0:57 0:46 0:38					

HUDSON, NEW YORK

Amtd 4B 17SEP15

COLUMBIA COUNTY (1B1)

42°17'N - 73°43'W

NDB-A

NE-2, 01 MAR 2018 to 29 MAR 2018

NE-2, 01 MAR 2018 to 29 MAR 2018

WAAS CH 40215 W21A	APP CRS 205°	Rwy Idg 5190
		TDZE 194
		Apt Elev 198

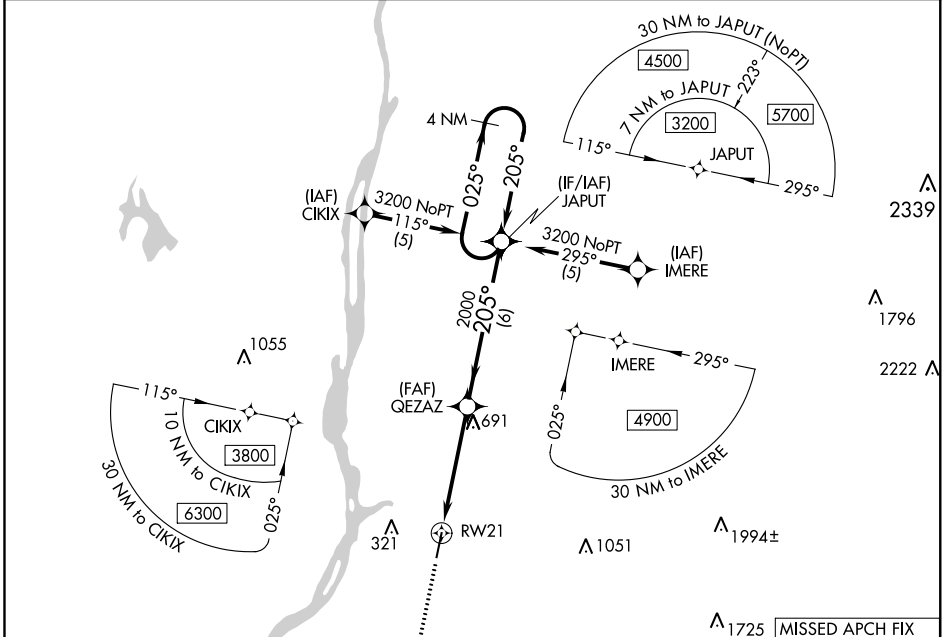
RNAV (GPS) RWY 21

COLUMBIA COUNTY (1B1)

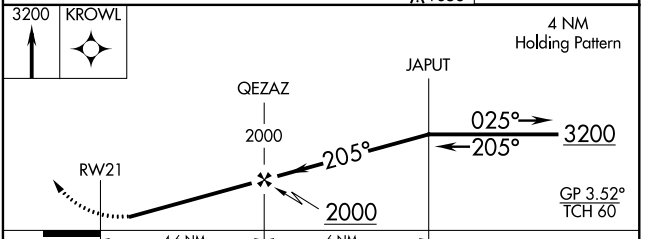
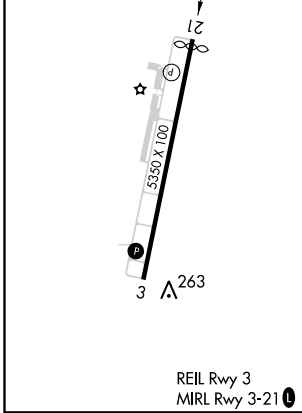
▼ DME/DME RNP -0.3 NA. Helicopter visibility reduction below 3/4 SM NA. When local altimeter setting not received, use Albany altimeter setting and increase all DA 76 feet and all MDA 80 feet, increase LPV all Cats visibility 1/4 mile, LNAV Cat B 1/2 mile, Cats C and D 1/2 mile. Circling Cat B 1/4 mile, Cat C 1/2 mile and Cat D 1/4 mile.

▲ NA MISSED APPROACH: Climb to 3200 direct KROWL and hold.

AWOS-3 133.525	ALBANY APP CON 132.825 307.2	UNICOM 123.05 (CTAF) 0
--------------------------	--	----------------------------------



ELEV 198	TDZE 194
----------	----------



CATEGORY	A	B	C	D
LPV DA	614-1 1/4			420 (500-1 1/4)
LNAV MDA	860-1	666 (700-1)	860-1 3/4 666 (700-1 3/4)	860-2 666 (700-2)
CIRCLING	860-1	662 (700-1)	860-1 3/4 662 (700-1 3/4)	920-2 1/4 722 (800-2 1/4)

NE-2. 01 MAR 2018 to 29 MAR 2018

NE-2. 01 MAR 2018 to 29 MAR 2018

WAAS CH 77715 W03A	APP CRS 025°	Rwy Idg 5350 TDZE 198 Apt Elev 198
--	------------------------	---

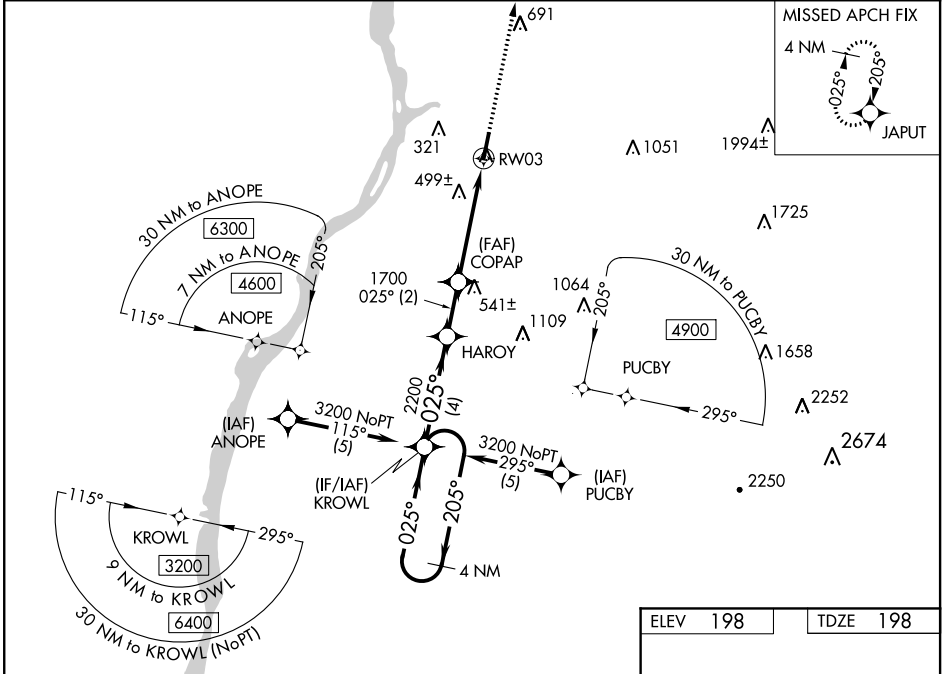
RNAV (GPS) RWY 3

COLUMBIA COUNTY (1B1)

NA Baro-VNAV NA when using Albany altimeter setting. For uncompensated Baro-VNAV systems, LNAV/VNAV NA below -15°C (5°F) or above 48°C (118°F). DME/DME RNP-0.3 NA. Helicopter visibility reduction below ¼ SM NA. When local altimeter setting is not received, use Albany altimeter setting and increase all DA 76 feet and all MDA 80 feet, increase LPV all Cats, LNAV/VNAV all Cats, LNAV Cats C and D, and Circling Cat D visibility ¼ mile, and Circling Cat C visibility ½ mile.

MISSED APPROACH: Climb to 3200 direct JAPUT and hold, continue climb-in-hold to 3200.

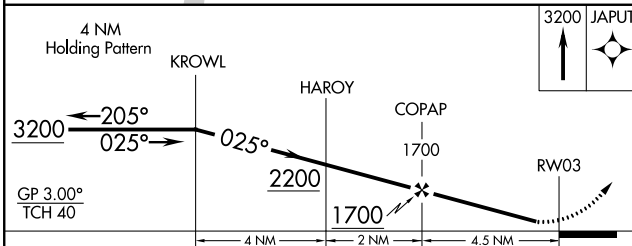
AWOS-3 133.525	ALBANY APP CON 132.825 307.2	UNICOM 123.05 (CTAF)
--------------------------	--	--------------------------------



NE-2. 01 MAR 2018 to 29 MAR 2018

NE-2. 01 MAR 2018 to 29 MAR 2018

ELEV 198	TDZE 198
----------	----------



CATEGORY	A	B	C	D
LPV DA		500-1	302 (400-1)	
LNAV/ VNAV DA		842-2¼	644 (700-2¼)	
LNAV MDA	760-1	562 (600-1)	760-1½ 562 (600-1½)	760-1¾ 562 (600-1¾)
CIRCLING	760-1 562 (600-1)	820-1 622 (700-1)	860-1¾ 662 (700-1¾)	920-2¼ 722 (800-2¼)

