

APP CRS	Rwy Idg	<b>4011</b>
<b>095°</b>	TDZE	<b>663</b>
	Apt Elev	<b>663</b>

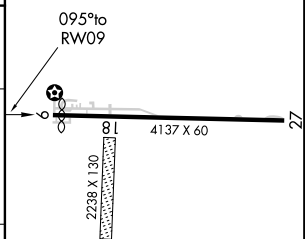
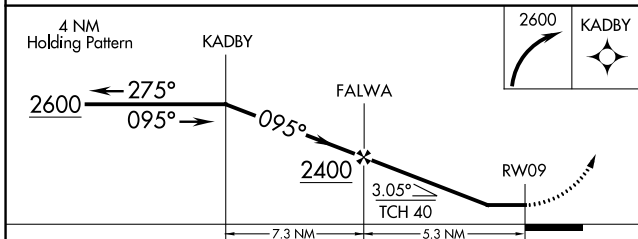
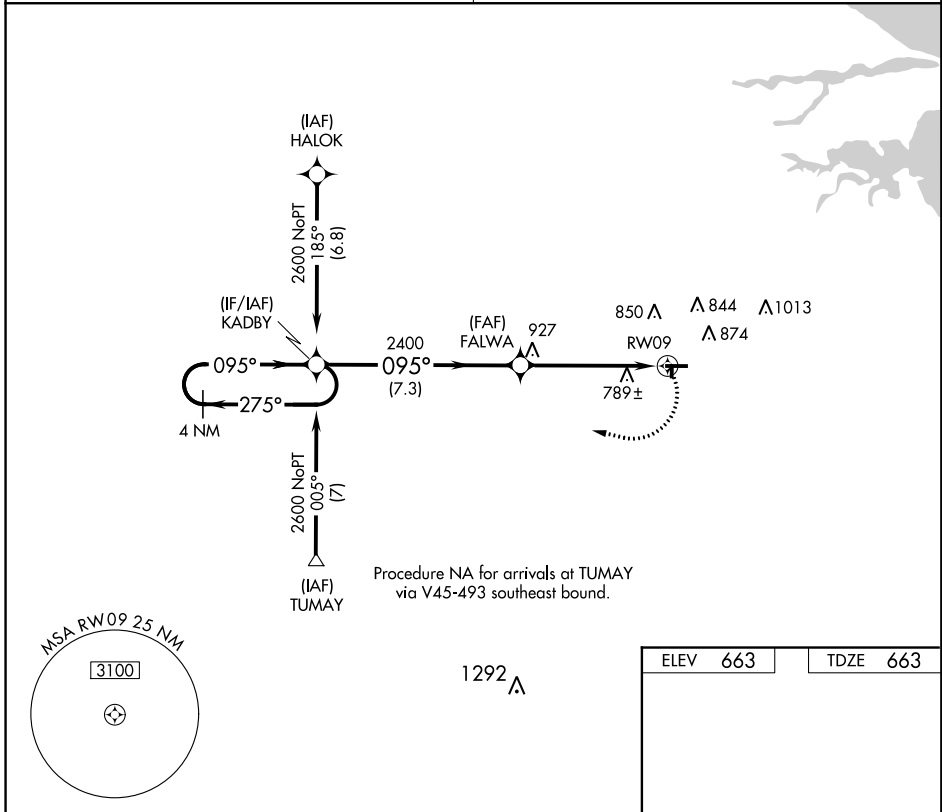
# RNAV (GPS) RWY 9

FREMONT (14G)

**▼** DME/DME RNP-0.3 NA. Visibility reduction by helicopters NA. Use Sandusky County Rgnl altimeter setting; when not received use Toledo Executive altimeter setting and increase all MDA 40 feet and LNAV Cat D visibility ¼ mile.

**▲** NA MISSED APPROACH: Climbing right turn to 2600 direct KADBY and hold.

TOLEDO APP CON <b>126.1 307.0</b>	UNICOM <b>122.8 (CTAF) 0</b>
--------------------------------------	---------------------------------



CATEGORY	A	B	C	D
LNAV MDA	1080-1	417 (500-1)	1080-1¼	417 (500-1¼)
CIRCLING	1200-1	537 (600-1)	1200-1½	1220-2 557 (600-2)

LIRL Rwy 9-27 **0**  
REIL Rwy 9 **0**

EC-2: 29 MAR 2018 to 26 APR 2018

EC-2: 29 MAR 2018 to 26 APR 2018

VOR/DME VVV <b>113.1</b> Chan <b>78</b>	APP CRS <b>110°</b>	Rwy Idg TDZE <b>663</b> Apt Elev <b>663</b>	<b>4011</b>
---	------------------------	---	-------------

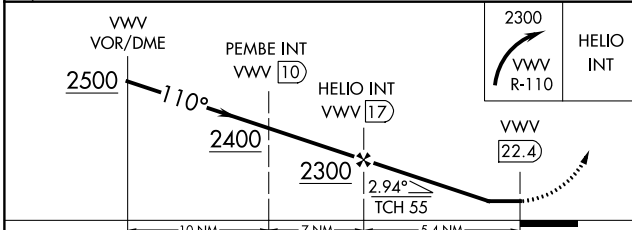
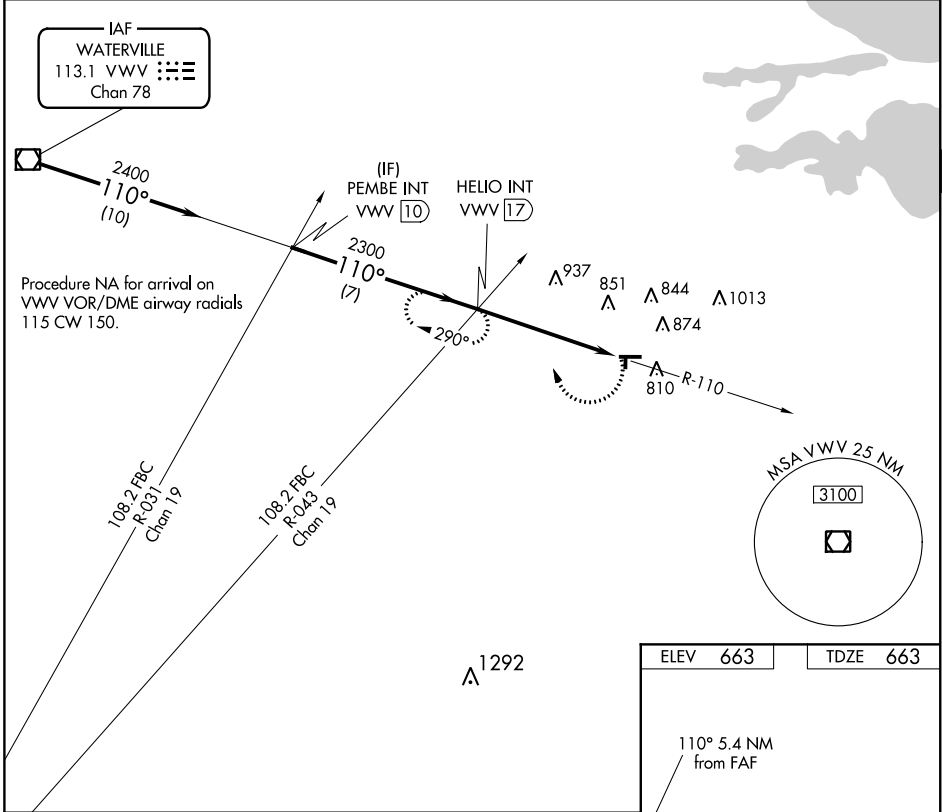
# VOR RWY 9

FREMONT (14G)

**⚠** Circling NA to Rwys 18 and 36. Rwy 9 helicopter visibility reduction below 1 SM NA. Use Sandusky County Rgnl altimeter setting; when not received, use Metcalf Field altimeter setting and increase all MDA 40 feet. Procedure NA at night.

**MISSED APPROACH:** Climbing right turn to 2300 via VVV VOR/DME R-110 to HELIO Int/VVV 17 DME and hold.

TOLEDO APP CON <b>126.1 307.0</b>	UNICOM <b>122.8 (CTAF) 0</b>
--------------------------------------	---------------------------------



ELEV 663	TDZE 663
----------	----------

110° 5.4 NM from FAF

81 4137 X 60 27

2238 X 130 36

URL Rwy 9-27 **0**

REIL Rwy 9 **0**

FAF to MAP 5.4 NM

Knots	60	90	120	150	180
Min:Sec	5:24	3:36	2:42	2:10	1:48

CATEGORY	A	B	C	D
S-9	1260-1 597 (600-1)	1260-1¼ 597 (600-1¼)	1260-1¾ 597 (600-1¾)	597 (600-1¾)
CIRCLING	1260-1 597 (600-1)	1260-1¼ 597 (600-1¼)	1260-1¾ 597 (600-1¾)	1260-2 597 (600-2)

EC-2: 29 MAR 2018 to 26 APR 2018

EC-2: 29 MAR 2018 to 26 APR 2018