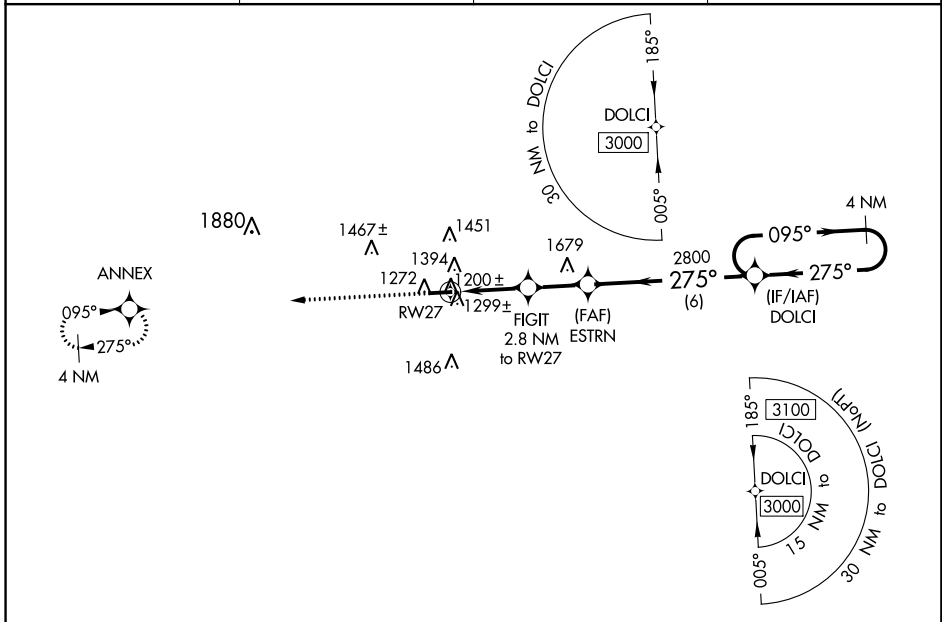


WAAS CH <b>57937</b> <b>W27A</b>	APP CRS <b>275°</b>	Rwy Idg <b>4400</b> TDZE <b>1215</b> Apt Elev <b>1227</b>
--	------------------------	---

# RNAV (GPS) RWY 27

HOLMES COUNTY (10G)

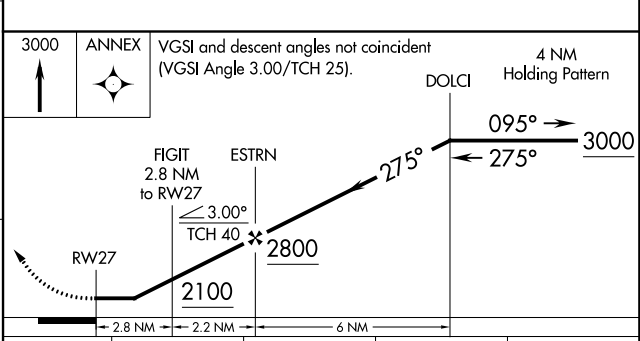
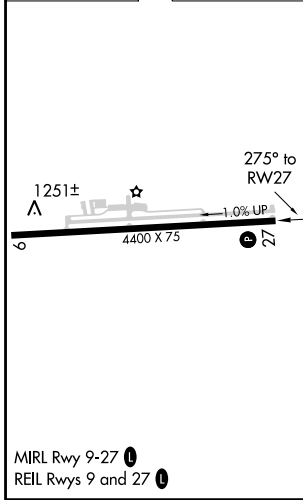
<p><b>▼</b> DME/DME RNP-0.3 NA. Helicopter visibility reduction below 1 SM NA.                  Procedure NA at night. When local altimeter setting not received, use Wayne County altimeter setting and increase all MDA 60 feet. Increase LNAV Cat C/D and Circling Cat C/D visibility 1/4 mile.</p>		<p><b>MISSED APPROACH:</b>                  Climb to 3000 direct ANNEX and hold.</p>	
AWOS-3 <b>128.325</b>	INDIANAPOLIS CENTER <b>124.45 370.9</b>	UNICOM <b>123.0 (CTAF)</b>	<b>123.4 0</b>



EC-2, 04 JAN 2018 to 01 FEB 2018

EC-2, 04 JAN 2018 to 01 FEB 2018

ELEV 1227	TDZE 1215
-----------	-----------



CATEGORY	A	B	C	D
LP MDA	1460-1 245 (300-1)			
LNAV MDA	1560-1 345 (400-1)			
<b>C</b> CIRCLING	1760-1	533 (600-1)	1840-1 <sup>3</sup> / <sub>4</sub> 613 (700-1 <sup>3</sup> / <sub>4</sub> )	1860-2 633 (700-2)

APP CRS	Rwy Idg	<b>4400</b>
<b>095°</b>	TDZE	<b>1227</b>
	Apt Elev	<b>1227</b>

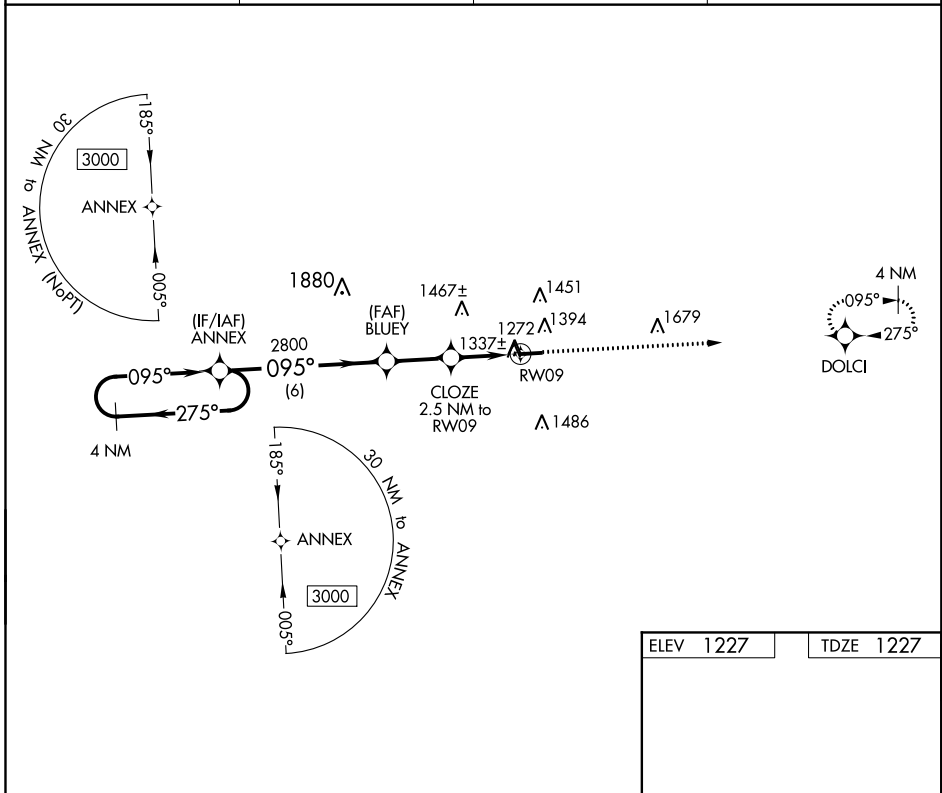
# RNAV (GPS) RWY 9

HOLMES COUNTY (10G)

**NA** DME/DME RNP-0.3 NA. Helicopter visibility reduction below 1 SM NA. Procedure NA at night. When local altimeter setting not received, use Wayne County altimeter setting and increase all MDA 60 feet. Increase LNAV and Circling Cat C/D visibility ¼ mile.

MISSED APPROACH: Climb to 3000 direct DOLCI and hold.

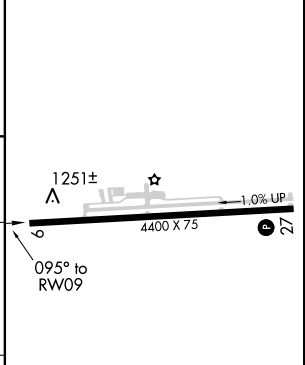
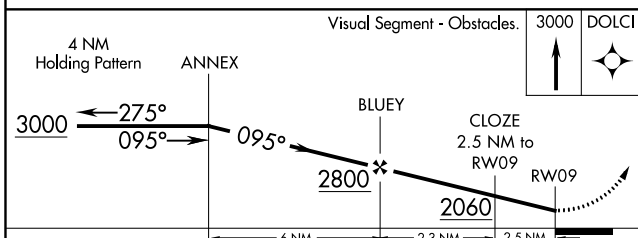
AWOS-3 <b>128.325</b>	INDIANAPOLIS CENTER <b>124.45 370.9</b>	UNICOM <b>123.0</b> (CTAF)	<b>123.4</b> <b>0</b>
--------------------------	--	-------------------------------	-----------------------



EC-2, 04 JAN 2018 to 01 FEB 2018

EC-2, 04 JAN 2018 to 01 FEB 2018

ELEV 1227	TDZE 1227
-----------	-----------



CATEGORY	A	B	C	D
LNAV MDA	1600-1 373 (400-1)			
<b>C</b> CIRCLING	1760-1 533 (600-1)	1840-1 3/4 613 (700-1 3/4)	1860-2 633 (700-2)	

MIRL Rwy 9-27 **0**  
REIL Rwy 9 and 27 **0**