

WAAS CH 97718	APP CRS 053°	Rwy Idg TDZE 716	7543
W05A		Apt Elev 716	

RNAV (GPS) RWY 5R

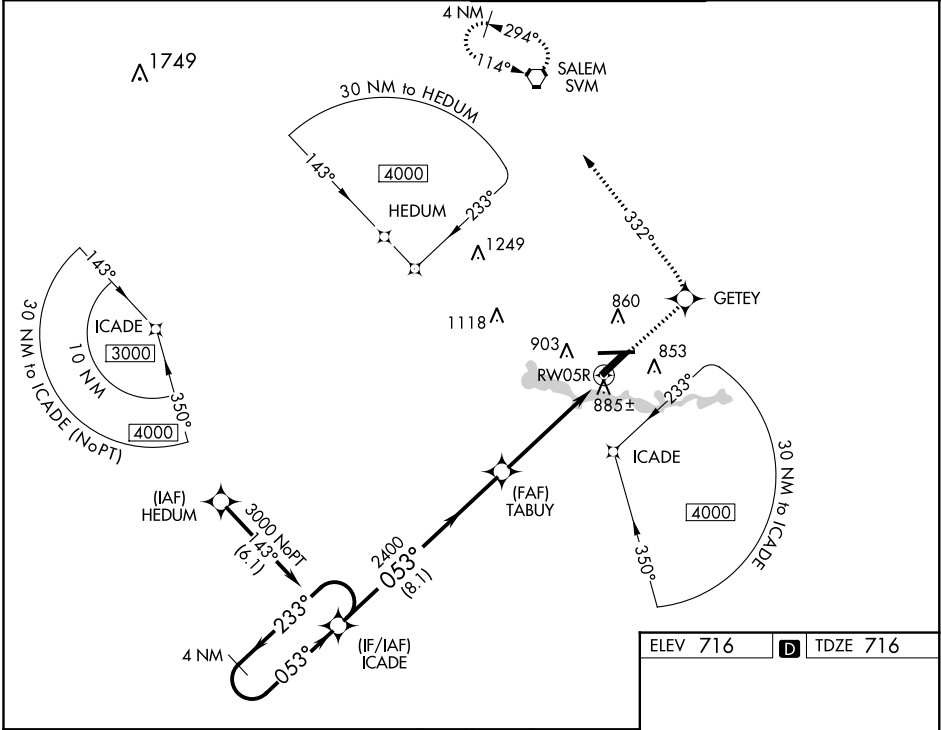
WILLOW RUN (YIP)

⚠ Inoperative table does not apply to LPV all Cats. For inoperative MALSR, increase Cat A/B visibility to RVR 5000 and Cat C/D visibility to 1 3/8. For uncompensated Baro-VNAV systems, LNAV/VNAV NA below -1.6°C (4°F) or above 47°C (116°F). DME/DME RNP-0.3 NA. Helicopter visibility reduction below 3/4 SM NA.

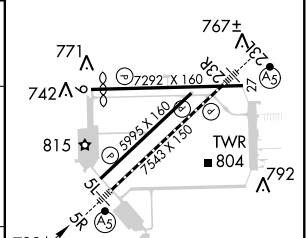
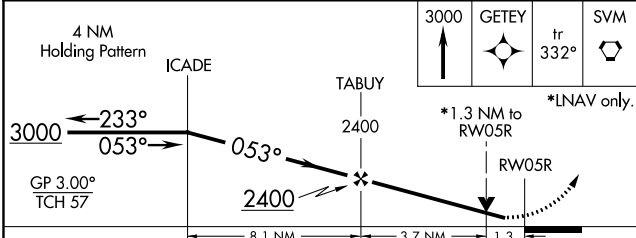
MALSR

MISSED APPROACH: Climb to 3000 direct GETEY and on track 332° to SVM VORTAC and hold.

ATIS 127.425	DETROIT APP CON 118.95 363.2	WILLOW RUN TOWER 125.275 256.9	GND CON 119.975
------------------------	--	--	---------------------------



ELEV 716	D	TDZE 716
----------	----------	----------



CATEGORY	A	B	C	D
LPV DA	966/40 250 (300-3/4)			
LNAV/VNAV DA	1186/50 470 (500-1)			
LNAV MDA	1200/40	484 (500-3/4)	1200/50	484 (500-1)
C CIRCLING	1220-1	504 (600-1)	1220-1 1/2 504 (600-1 1/2)	1400-2 1/4 684 (700-2 1/4)

TDZ/CL Rwy 5R
HIRL Rwy 5R-23L
MIRL Rwy 5L-23R, and 9-27

EC-1, 07 DEC 2017 to 04 JAN 2018

EC-1, 07 DEC 2017 to 04 JAN 2018