

LOC/DME I-LSW <b>109.5</b> Chan 32	APP CRS <b>233°</b>	Rwy Idg 23R 23L TDZE <b>5996 7543</b> <b>711 708</b> Apt Elev <b>716 716</b>
--	------------------------	--

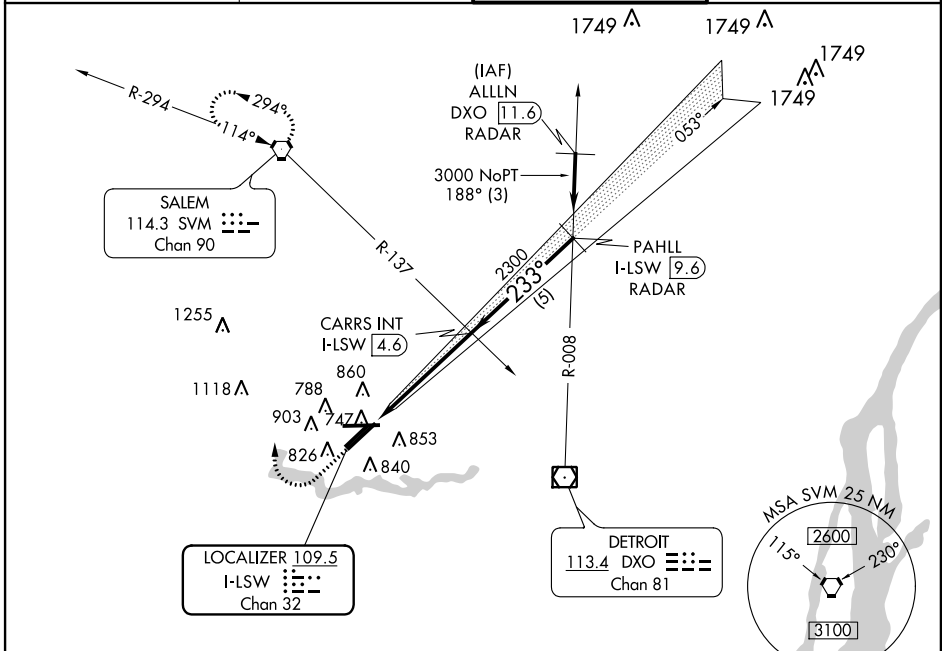
# ILS or LOC RWY 23L

WILLOW RUN (YIP)

**▼** Inoperative table does not apply to S-ILS 23L. For inoperative MALSR, increase S-LOC 23 Cat A and B visibility to 1.

**MALSR**  
MISSED APPROACH: Climb to 1400, then climbing right turn to 3000 direct SVM VORTAC and hold.

ATIS <b>127.425</b>	DETROIT APP CON <b>118.95 363.2</b>	WILLOW RUN TOWER <b>125.275 256.9</b>	GND CON <b>121.75</b>
------------------------	--	--	--------------------------

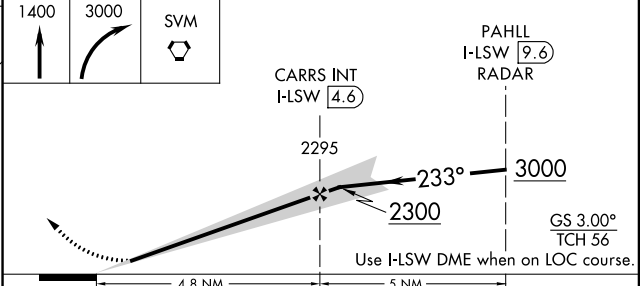
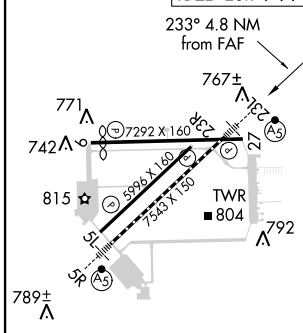


EC-1, 05 MAR 2015 to 02 APR 2015

EC-1, 05 MAR 2015 to 02 APR 2015

ELEV 716	<b>D</b> TDZE 23L 708 TDZE 23R 711
----------	---------------------------------------

## RADAR REQUIRED



TDZ/CL Rwy 5R  
HIRL Rwy 5R-23L  
MIRL Rwys 5L-23R, and 9-27

FAF to MAP 4.8 NM

Knots	60	90	120	150	180
Min:Sec	4:48	3:12	2:24	1:55	1:36

CATEGORY	A	B	C	D
S-ILS 23L	958- <sup>3</sup> / <sub>4</sub> 250 (300- <sup>3</sup> / <sub>4</sub> )			
S-LOC 23L	1140- <sup>3</sup> / <sub>4</sub> 432 (500- <sup>3</sup> / <sub>4</sub> )			1140-1 432 (500-1)
SIDESTEP RWY 23R	1140-1 429 (500-1)		1140-1½ 429 (500-1½)	1140-2 429 (500-2)
CIRCLING	1200-1 484 (500-1)		1200-1½ 484 (500-1½)	1280-2 564 (600-2)