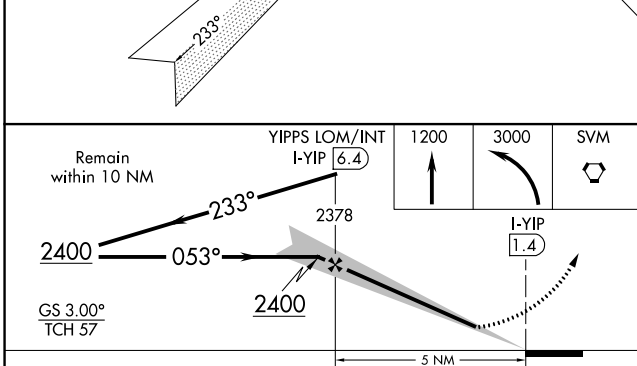
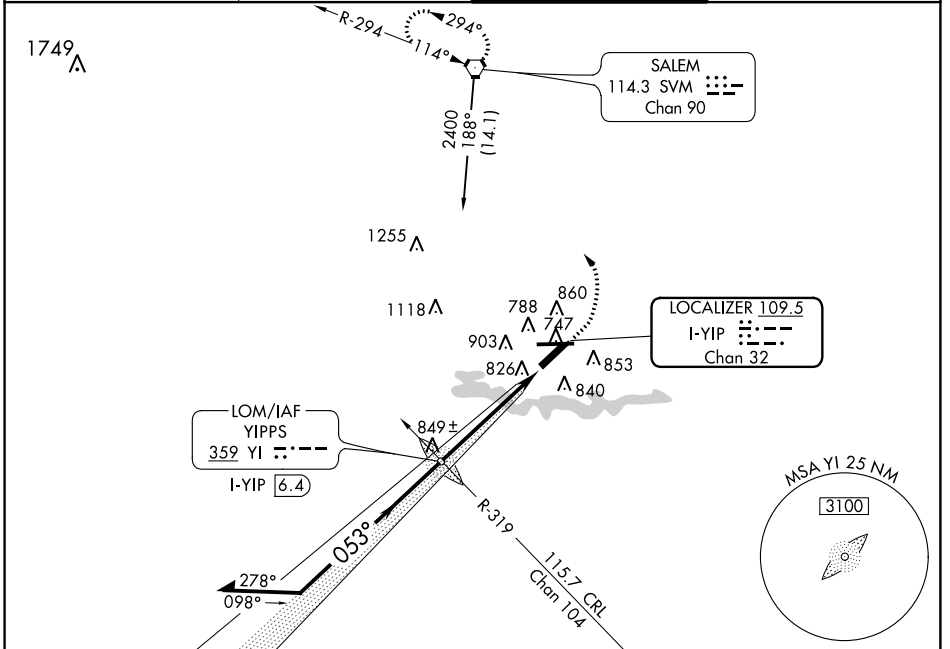


LOC/DME I-YIP 109.5 Chan 32	APP CRS 053°	Rwy Idg 5R 7543 5L 5996 TDZE 715 716 Apt Elev 716 716
---	------------------------	--

ILS or LOC RWY 5R

WILLOW RUN (YIP)

<p>▽ For inoperative MALSR increase S-LOC-5R Cat A and B; visibility to RVR 5000. Inoperative table does not apply to S-ILS all Cats.</p>	MALSR	MISSED APPROACH: Climb to 1200, then climbing left turn to 3000 direct SVM VORTAC and hold.	
ATIS 127.425	DETROIT APP CON 118.95 363.2	WILLOW RUN TOWER 125.275 256.9	GND CON 121.925



ELEV 716	D	TDZE 5R 715 TDZE 5L 716
----------	----------	----------------------------

TDZ/CL Rwy 5R	1200-1	484 (500-1)	1200-1½	484 (500-1½)	1280-2	564 (600-2)
HIRL Rwy 5R-23L						
MIRL Rwy 5L-23R, and 9-27						
FAF to MAP 5 NM						
Knots	60	90	120	150	180	
Min:Sec	5:00	3:20	2:30	2:00	1:40	

CATEGORY	A	B	C	D
S-ILS 5R	965/40 250 (300-¾)			
S-LOC 5R	1120/40 405 (500-¾)			
CIRCLING	1200-1	484 (500-1)	1200-1½ 484 (500-1½)	1280-2 564 (600-2)
SIDESTEP RWY 5L	1120-1	404 (500-1)	1120-1½ 404 (500-1½)	1120-2 404 (500-2)

EC-1, 14 SEP 2017 to 12 OCT 2017

EC-1, 14 SEP 2017 to 12 OCT 2017