

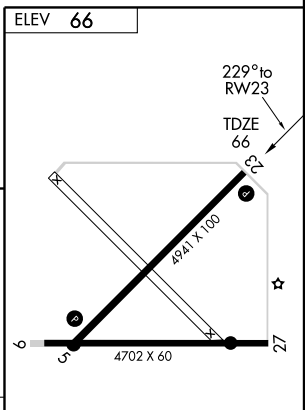
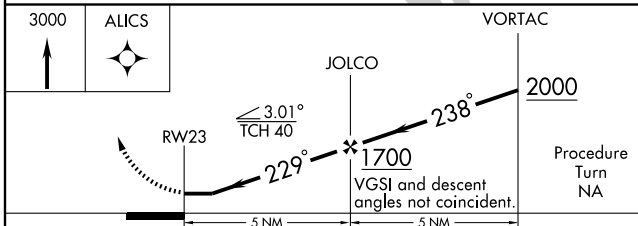
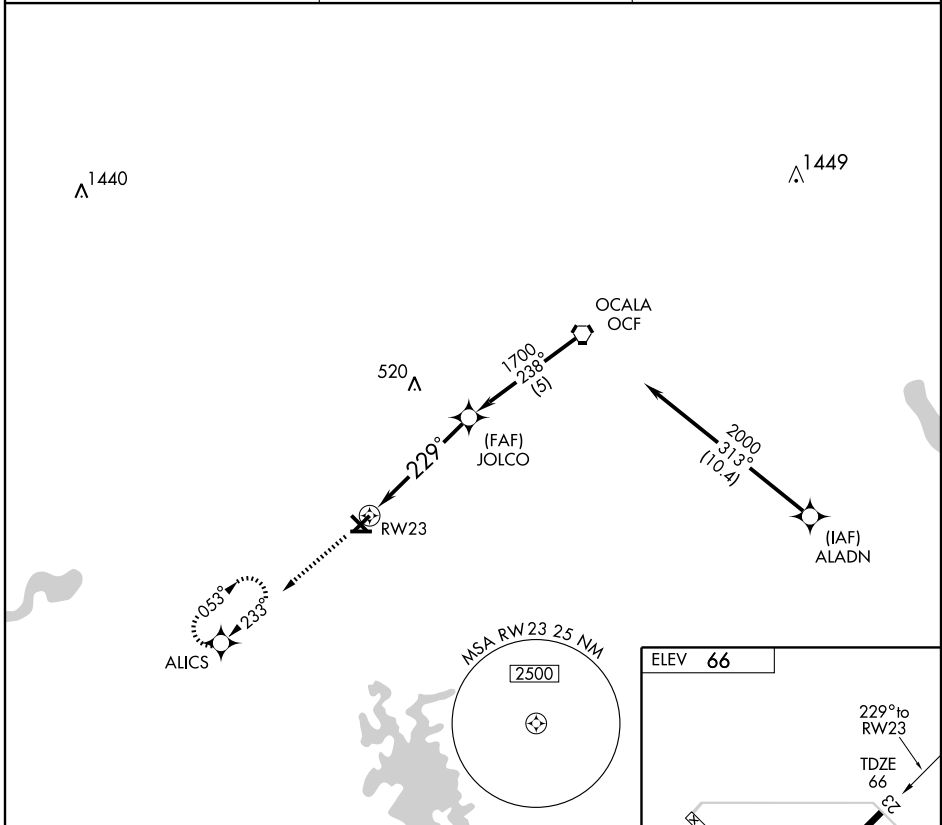
GPS RWY 23

DUNNELLON/MARION CO & PARK OF COMMERCE (X35)

APP CRS 229°	Rwy Idg TDZE Apt Elev	4941 66 66
------------------------	-----------------------------	---------------------------------------

<p>▲ NA Use Ocala Int'l-Jim Taylor Field altimeter setting.</p>	<p>MISSED APPROACH: Climb to 3000 direct ALICS WP and hold.</p>
--	---

<p>OCALA AWOS-3 128.125</p>	<p>JACKSONVILLE APP CON 118.6 251.15</p>	<p>UNICOM 122.8 (CTAF) ①</p>
--	---	--



CATEGORY	A	B	C	D
S-23	540-1 474 (500-1)		540-1¼ 474 (500-1¼)	540-1½ 474 (500-1½)
CIRCLING	540-1 474 (500-1)		540-1½ 474 (500-1½)	620-2 554 (600-2)

MIRL Rwy 5-23 **①**

GPS RWY 23

SE-3, 19 NOV 2009 to 17 DEC 2009

SE-3, 19 NOV 2009 to 17 DEC 2009

DUNNELTON, FLORIDA

AL-9138 (FAA)

VORTAC OCF 113.7 Chan 84	APP CRS 229°	Rwy Idg TDZE Apt Elev	4941 66 66
--	------------------------	-----------------------------	---------------------------------------

VOR/DME RWY 23

DUNNELTON/MARRION CO & PARK OF COMMERCE (X35)

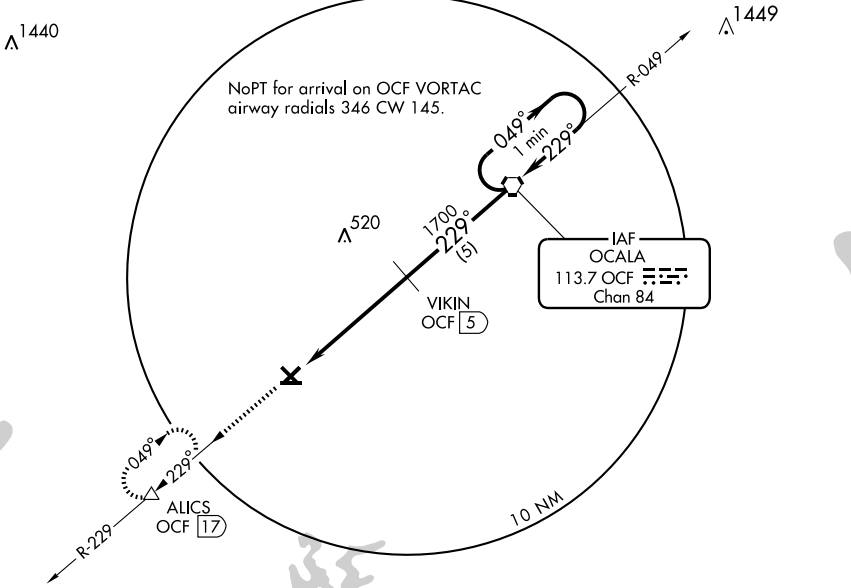
▲ NA Use Ocala altimeter setting.

MISSED APPROACH: Climb to 3000 via OCF R-229 to ALICS/OCF 17 DME and hold.

OCALA AWOS-3
128.125

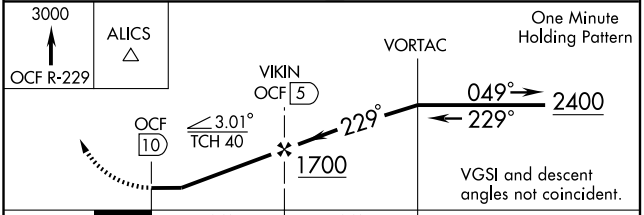
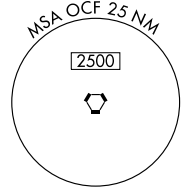
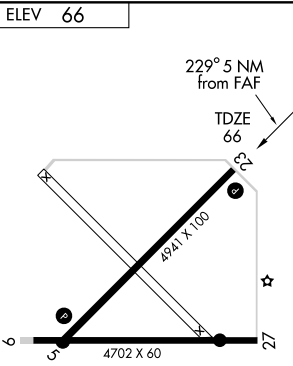
JACKSONVILLE APP CON
118.6 251.15

UNICOM
122.8 (CTAF) 0



SE-3, 19 NOV 2009 to 17 DEC 2009

SE-3, 19 NOV 2009 to 17 DEC 2009



CATEGORY	A	B	C	D
S-23	540-1	474 (500-1)	540-1½ 474 (500-1½)	540-1½ 474 (500-1½)
CIRCLING	540-1	474 (500-1)	540-1½ 474 (500-1½)	620-2 554 (600-2)

MIRL Rwy 5-23 **0**
DUNNELTON, FLORIDA
Amdt 1B 09267

DUNNELTON/MARRION CO & PARK OF COMMERCE (X35)
29°04'N-82°23'W
VOR/DME RWY 23