

WAAS CH 82039 W13A	APP CRS 132°	Rwy Idg TDZE Apt Elev	5500 4227 4264
--	------------------------	-----------------------------	---

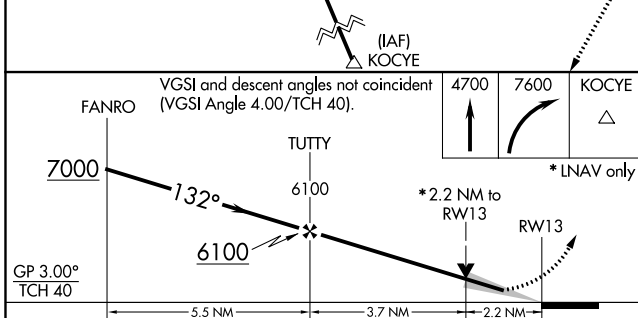
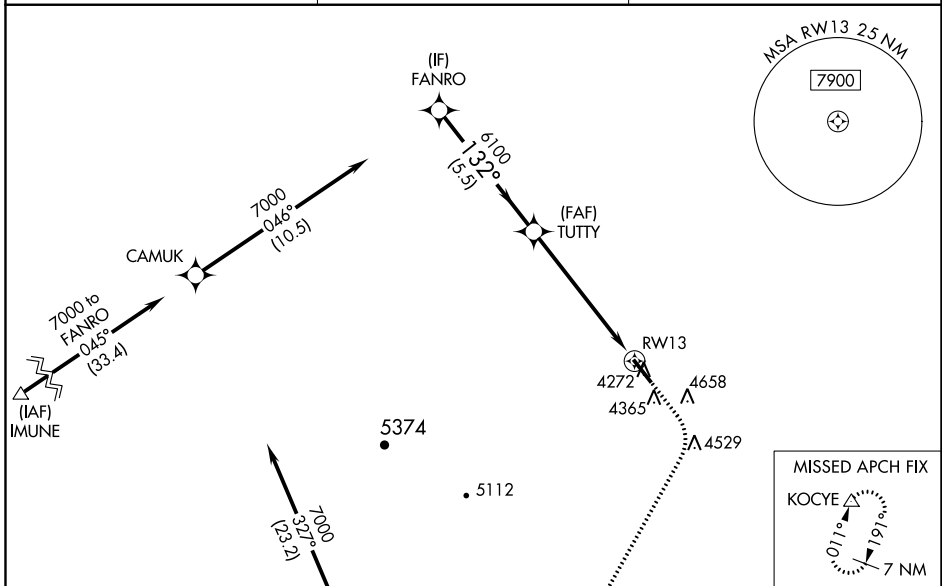
RNAV (GPS) RWY 13

HULETT MUNI (W43)

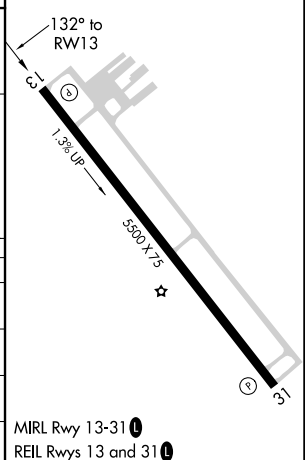
⚠ For uncompensated Baro-VNAV systems, procedure NA below -23°C (-9°F) or above 53°C (127°F). Baro-VNAV and VDP NA when using Gillette altimeter setting.
⚠ -34°C DME/DME RNP-0.3 NA. When local altimeter setting not received, use Gillette altimeter setting and increase LPV DA to 4662 feet; LNAV/VNAV DA to 4807 feet, and all visibilities ½ mile. Increase all MDA 120 feet and LNAV Cat C/D visibility ½ mile, Circling Cat A/B ¼ mile, and Cat C ½ mile.

MISSED APPROACH:
 Climb to 4700 then climbing right turn to 7600 direct KOCYE and hold.

AWOS-3PT 128.775	DENVER CENTER 127.95 338.2	UNICOM 122.8 (CTAF)
----------------------------	--------------------------------------	-------------------------------



ELEV 4264	TDZE 4227
-----------	-----------



CATEGORY	A	B	C	D
LPV DA		4542-1½	315 (300-1½)	
LNAV/VNAV DA		4687-1¾	460 (500-1¾)	
LNAV MDA	5100-1 873 (900-1)	5100-1¼ 873 (900-1¼)	5100-2½	873 (900-2½)
C CIRCLING	5100-1 836 (900-1)	5100-1¼ 836 (900-1¼)	5100-2½ 836 (900-2½)	5400-3 1136 (1200-3)

27 APR 2017 to 25 MAY 2017

27 APR 2017 to 25 MAY 2017

APP CRS 011°	Rwy Idg TDZE Apt Elev	N/A N/A 4264
------------------------	-----------------------------	---

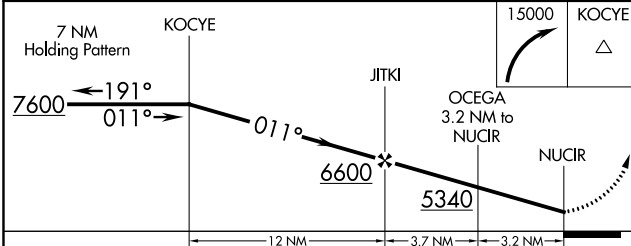
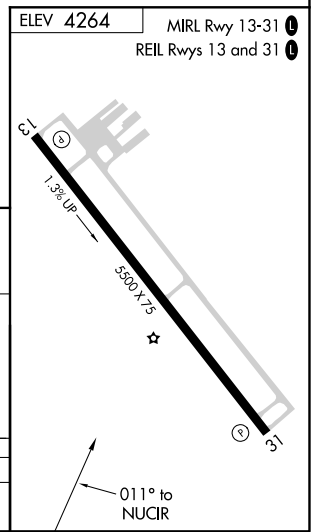
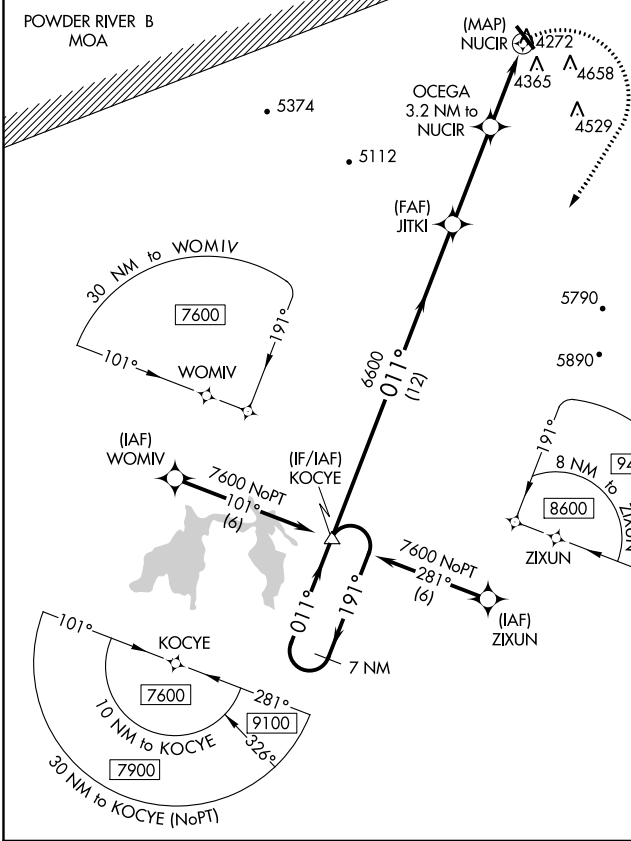
RNAV (GPS)-A

HULETT MUNI (W43)

NA DME/DME RNP-0.3 NA. When local altimeter setting is not received use Gillette-Campbell County altimeter setting and increase all MDA 120 feet and visibility Cat B ¼ mile.

MISSED APPROACH: Climbing right turn to 15000 direct KOCYE and hold, continue climb-in-hold to 15000.

AWOS-3PT 128.775	DENVER CENTER 127.95 338.2	UNICOM 122.8 (CTAF) 0
----------------------------	--------------------------------------	---------------------------------



CATEGORY	A	B	C	D
CIRCLING	4900-1 636 (700-1)	5020-1 756 (800-1)	NA	

27 APR 2017 to 25 MAY 2017

27 APR 2017 to 25 MAY 2017